

the
WINNIPESAUKEE
playhouse

20TH SEASON



CELEBRATION

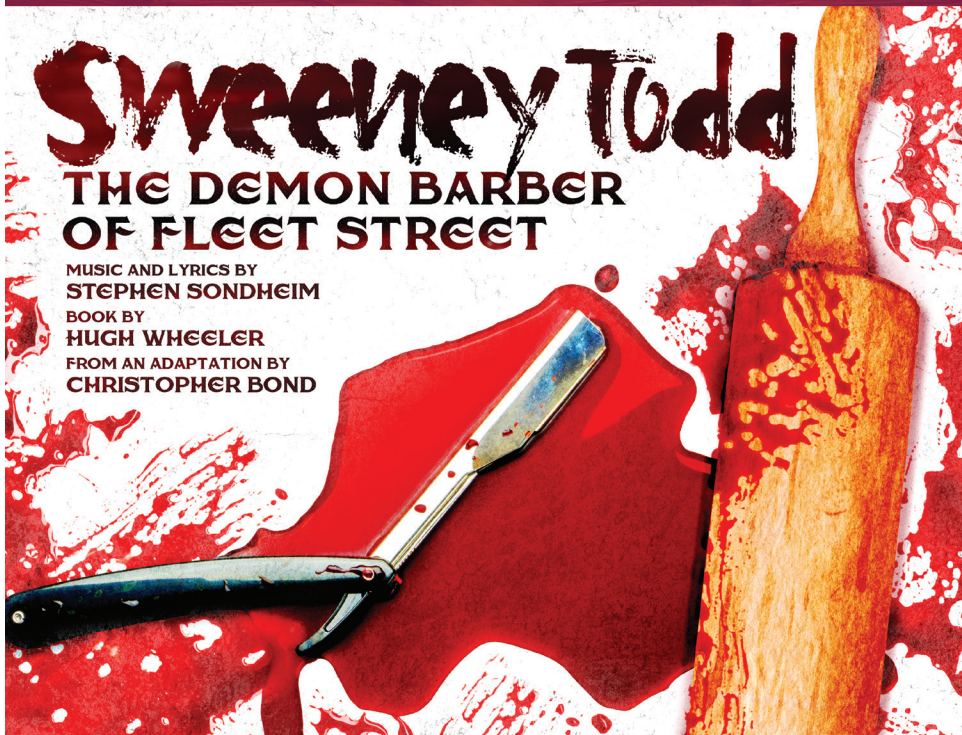
Sweeney Todd

THE DEMON BARBER OF FLEET STREET

MUSIC AND LYRICS BY
STEPHEN SONDHEIM

BOOK BY
HUGH WHEELER

FROM AN ADAPTATION BY
CHRISTOPHER BOND



AUGUST 31-SEPTEMBER 9

winnepesaukeeplayhouse.org

603.279.0333 | 33 Footlight Circle, Meredith NH 03253



Meredith Marina

603.279.7921



Scan Me
for
Directions!

BOAT RENTALS & Jet-Ski Rentals



Water-Ski
& Tubing
Packages
Available!

Make A Splash!



One of the largest
BOAT RENTAL FLEETS
on Lake Winnepesaukee!

NEW & USED BOAT SALES

Hunter

tió
ADAPT

Sweetwater

Sanpan

Aqua Patio

Premier
Pontoons

MARINE STORE & BOATING ACCESSORIES

603-279-7921



BOAT SALES • BROKERAGE • VALET • SERVICE • RENTALS • STORAGE

2 Bayshore Drive, Meredith, NH • Meredith Bay • Lake Winnepesaukee



www.meredithmarina.com

Board of Trustees

Renee Speltz
Chair
Retired Mental Health Counselor and
Consultant

Bill Bald
Vice Chair
President
Melcher and Prescott Insurance

Raymond Abramson, CPA
Treasurer
Owner
Abramson & Company, LLC

Kaitlin M. O'Neil
Secretary
Attorney
Normandin, Cheney & O'Neil, PLLC

Members at Large

Eden Unger Bowditch
Author
Plymouth State University

Julie Hirshan Hart
Editor
The Laconia Daily Sun

Lesley Pankhurst
Co-Founder and Patron and
Company Services Director
The Winnepesaukee Playhouse

Sean C. Sullivan, CPA
Business Consultant

Kathleen Sweeney, CPA
Owner
Kathleen Sweeney CPA

Julia Thomson
Legal Consultant

Brian Winslow
Director of Community Relations
Granite VNA

the WINNIPESAUKEE playhouse

Permanent Staff

Artistic Director.....Timothy L'Ecuyer
Managing Director.....Thom Beaulieu
Patron & Company Services Director.....Lesley Pankhurst
Dir. of Education & Community Engagement.....Cory Lawson
Production Manager.....Amanda Dickinson
Technical Director.....Matthew Hutchens
Assistant Technical Director.....RJ Bogues
Bookkeeper.....Donna Findlay

Professional Season Company

Scenic Charge Artist.....Gwen Elise Higgins
Electrics Supervisor.....Libby Hinshaw
Props Supervisor.....Nick Winkler
Scenic Carpenter.....Francisco Fialho
General Technician.....E. Wilson
Costume Assistant.....Melody Carter
Wardrobe Supervisor.....Natalya Salvati
Camp Administrator.....Becky Gregoire

Proud Members of

NEW HAMPSHIRE

PROFESSIONAL THEATRE

ASSOCIATION

WWW.NHPTA.ORG INFO@NHPTA.ORG

The Winnepesaukee Playhouse
33 Footlight Circle, Meredith NH 03253
Tel. (603) 279-0333

www.winnepesaukeeplayhouse.org

For Your Information

Please turn your cell phone and any other electronic devices completely off. Leaving them on silent or vibrate may interfere with our communication systems and interrupt the flow of the performance.

Please refrain from photography or recordings of any kind, as this violates our royalty agreements.

Please note that if you must, in an emergency, use the restrooms during the performance, our House Manager will return you to your seat at an appropriate break in the performance.

Please be sure you can hear us! For our theatre patrons who have experienced varying degrees of hearing impairment, please take advantage of our state-of-the-art **Assisted Listening System**.

For indoor performances: If you are a hearing aid user who has a tele-coil function in your hearing aid you will be able to access our system directly after turning on that function. You may need to contact your hearing aid provider to inquire about the tele-coil in your particular hearing aid and ensure that it has been activated and instructed on how to turn it on when you are in the theatre. For patrons without tele-coil hearing aids, we have a limited number of headsets available on a first-come, first-served basis. Please see the box office if you would like to use one.

The indoor Assisted Listening System is made possible by a generous donation from The Maurice and Rhoda Miller Endowment Fund.

For outdoor performances: All actors will be amplified. If you'd like further amplification, headsets are available on a first-come, first-served bases from our reception table.

Please keep in touch! Visit our website at www.winnepesaukeeplayhouse.org to join our email list. You can also follow us on Facebook, Instagram, and Twitter.

Dear Friends:



On behalf of Managing Director Thom Beaulieu, myself, and everyone at the Winnepesaukee Playhouse, thank you for joining us for our 20th season! All three departments of the Playhouse—professional, community, and education—have fantastic things planned for 2023 and I am honored to have the privilege of helping to shepherd all of them to the stage in my first season as Artistic Director.

Marking our 20th season is an opportunity for all of us to reflect on the path that brought us here. It would be impossible for me to do so without mentioning the deep gratitude I have for the unflagging effort of my predecessor, Founding Artistic Director Neil Pankhurst. Working with him for the past nine years has prepared me to step up into this position in a way that nothing else could. I am additionally grateful for his continued support and can't wait to welcome him back to write and direct this year's holiday Panto *Cinderella*.

This season revives some Playhouse favorites: American classics, a smash hit ABBA jukebox musical, the poignant story of the friendship between a pig and a spider that many of us grew up loving, and more. It also honors and extends the Playhouse's long-standing tradition of bringing you an exciting variety of work transcending time, geography, and genre. Bringing all of this to life for you are talented teams of theatre artists, some of whose work you already know and love as well as extraordinary professionals, students, and community members sharing their work with us for the first time.

An anniversary like this is also an opportunity to turn our eyes to the future and think about what might be. This year's transitions in leadership, particularly the addition of Amanda Dickinson and Cory Lawson to our staff, have already had invigorating effects. In the coming months and years, we will also shake out the cobwebs by bringing you new programming, new initiatives, and new ways of bringing epic storytelling to our intimate spaces. We will also rededicate ourselves to what works best.

Whether you are a longtime Playhouse supporter or are joining us for the first time, we are thrilled that you have chosen to be part of our community. We are more excited than ever to walk into the future together.

--Timothy L'Ecuyer
Artistic Director

MOULTON FARM

Meredith, N.H.



Farm Market Open Daily

Mid-March Through Dec. 31

DRIVEWAYS • WALKWAYS
PARKING LOTS • ROADS



603-279-1499

www.bryantpaving.com



FIND YOUR ESCAPE!

DOWNTOWN MEREDITH

603 279.3905

312 Daniel Webster Hwy

DOWNTOWN LACONIA

603 409.6756

630 Main St.

www.innisfreebookshop.com

KATHLEEN E. SWEENEY

CERTIFIED PUBLIC ACCOUNTANT

P.O. Box 1259
Center Harbor, NH 03226
(603) 253-4011
Fax (603) 253-4051

P.O. Box 1187
North Conway, NH 03860
(603) 356-7036
Fax (603) 733-5250

ksweeney@metrocast.net
www.kathleensweeneycpa.com

Thank you for voting us best in the lakes region



Dependable and timely Oil, Diesel and Propane deliveries from Loudon to Lincoln and Alexandria to Alton Full Emergency and Installation services

CELEBRATING
75 YEARS
1946-2021

Heating Oils
Propane
Diesel
24-Hour Emergency Service
Boiler Installations
Preventive Maintenance

Family Owned & Operated Since 1946 • (603) 524-1417 • www.foleyoilco.com

Mello
Moose
COFFEE HOUSE



136 Daniel Webster Hwy, Meredith
(603) 677-7037

Great coffee, breakfast sandwiches, and
fresh baked goods to start your day!


TWIN BARNS
BREWING CO

194 Daniel Webster Hwy
Meredith



**Bring Ticket Stub To
Twin Barns for 50%
off apps**

*We are thrilled to support
The Winnipisaukee Playhouse*

Temple B'nai Israel
Laconia, NH



Temple B'nai Israel



TBINH.ORG

Prescott  *Farm*
Environmental Education Center



*After the play—
we'll help you find ways to play
outside!*



928 White Oaks Road, Laconia
603.366.5695 prescottfarm.org

Before the Play
enjoy dinner at

 **CANOE** or 
STEAKS & SEAFOOD

253-4762 524-9373
Center Harbor Lakeport

www.magicfoodsrestaurantgroup.com

Supporting the Arts
LAURA & GARY STEPHAN

In loving memory
 Dorothy Marie Schrader
 Gerald Lewis Schrader



The Laconia Daily Sun Don't Miss a Day!

Read online at laconiadailysun.com

sign up for daily newsletters • home delivery call (603)737-2020



Lakes Region
FENCE

Proudly Supporting
 The
 Winnepesaukee
 Playhouse

Residential Fencing Specialists
 FULLY INSURED



SINCE 2005

www.LRFence.com

222 Country Club Rd
 Gilford, NH 03249

Call Us for a Free
 Estimate!
 603.524.6061

BRAVO WINNI PLAYHOUSE!

Patrick's
 IRISH ROOTS - AMERICAN SPIRIT

patrickspub.com • 603) 293-0841

18 Weirs Rd Gilford, NH

HART'S
 TURKEY FARM
Restaurant



233 Daniel Webster Hwy
 Meredith, NH 03253
 603-279-6212

hartsturkeyfarm.com

Regular
 Children &
 Mini
 Menus
 Available
 Gift Shop
 Catering

IRWIN
 AUTOMOTIVE GROUP

603-524-4922 | irwinzone.com

Serving New Hampshire Since 1951

59 Bisson Avenue Laconia, NH

446 Union Avenue Laconia, NH



2023 SHOW LISTINGS

SPRING

March 24-26: Charlotte's Web

Adapted by Joseph Robinette, Based on the book by E.B. White

Radiant! Terrific! Some pig!

All your favorite characters from E.B. White's classic children's novel come to life on the stage as Wilbur, a runt of a pig, ends up under the protection of an extraordinary spider, Charlotte. Charlotte saves Wilbur's bacon with the magical words she weaves in the web while teaching him the true meaning of friendship.

Sponsored by:



NEW
HAMPTON
SCHOOL

April 14-16: Twelfth Night

By William Shakespeare

If music be the food of love, play on!

A shipwreck. Separated twins. Mistaken identity. Unrequited love. Lost in an unfamiliar land, quick-witted Viola disguises herself as a man and finds herself in the middle of an explosive love triangle in one of Shakespeare's most beloved romantic comedies.

Sponsored by:



NEW
HAMPTON
SCHOOL

April 27-30: Ken Ludwig's Lend Me a Tenor

A screwball comedy from the master of farce!

When a world-renowned opera star ends up passed out in a hotel room before he is due on stage, a lowly office assistant is persuaded to don his costume and go on in his place. But when our star revives, hilarity ensues. Mix two tenors in two identical costumes with a singing bellhop and a seductive soprano, and you get chaos of operatic proportions.

Sponsored by:



THE *Winni*
PLAYERS

2023 SHOW LISTINGS

PROFESSIONAL SEASON

June 15-July 8: Mamma Mia!

Music and Lyrics by Benny Andersson and Björn Ulvaeus and some songs with Stig Anderson,
Book by Catherine Johnson, Originally Conceived by Judy Crayme

The global smash-hit musical returns to the Playhouse!

Over 60 million people all around the world have fallen in love with the characters, the story, and the music that make **Mamma Mia!** the ultimate feel-good show! A mother. A daughter. Three possible dads. And a trip down the aisle you'll never forget!

Sponsored by:

Delivering on A promise.™



July 12-22: SHOUT! The Mod Musical

Created by Phillip George & David Lowenstein

The music, the fashion, and the freedom of the swinging 60s!

This smashing revue tracks five groovy gals as they come of age during those liberating days that made England swing! Join this fast-paced journey through infectious and soulful pop anthems and ballads like "To Sir With Love," "Downtown," "You Don't Have to Say You Love Me," "Son of A Preacher Man," and "Goldfinger." Groovy, baby!

Sponsored by:



July 27-August 12: Agatha Christie's Murder on the Orient Express

Adapted by Ken Ludwig

All aboard for a trip you'll never forget!

Just after midnight, a snowdrift stops the Orient Express in its tracks. The luxurious train is surprisingly full for the time of the year, but by the morning there is one fewer passenger. An American tycoon lies dead in his compartment, stabbed eight times, his door locked from the inside. Isolated and with a killer in their midst, the passengers rely on detective Hercule Poirot to identify the murderer – in case they decide to strike again.

Sponsored by:



2023 SHOW LISTINGS

PROFESSIONAL SEASON

August 16-26: Driving Miss Daisy

By Alfred Uhry



An open road of possibility

Uhry's portrait of an aging Southern woman and the Black man hired to be her driver. What starts out as indifference and disdain soon turns into a relationship of mutual trust and compatibility as they break down each other's defenses and come to realize that friendship comes in all different packages.

Sponsored by:

LOVERING
Cars you love from people you trust.

VOLVO
Concord Meredith Nashua

98.3 fm
Frank

August 31-September 9: Sweeney Todd, The Demon Barber of Fleet Street

Music and Lyrics by Stephen Sondheim. Book by Hugh Wheeler. From an adaptation by Christopher Bond

A deliciously gruesome musical!

Attend the tale of the vengeful barber and the scheming pie shop owner who have been haunting the stage since the show's legendary Broadway debut in 1979. **Sweeney Todd** is a tale of love, lust, revenge, and murder set amongst the smog of Victorian England. One of the most deliciously inventive scores of all time, it will leave you hungry for more!

September 14-24: The Glass Menagerie

By Tennessee Williams

"In memory, everything seems to happen to music."

One of the enduring classics of the 20th century, **The Glass Menagerie** is a semi-autobiographical play from one of this country's most beloved playwrights. This memory play is a portrait of a young man attempting to understand the difficult mother and delicate sister who tether him to home. A powerful and haunting piece of theatre.

Sponsored by:

THE
FITNESS
Edge
Health Club

2023 SHOW LISTINGS

FALL

October 20-29: Corduroy

Based on the books by Don Freeman, Adapted for the stage by Barry Kornhauser

"I like you the way you are."

When the lights are dimmed and the doors are locked, a department store comes to life. Corduroy, the stuffed bear with the green overalls, must outsmart the Night Watchman as he waits for his human friend, Lisa, to return. With his missing button, Corduroy may not be perfect, but Lisa proves that sometimes all you need is a friend.

November 8-12: Fiddler on the Roof

Book by Joseph Stein, Music by Jerry Bock, Lyrics by Sheldon Harnick

To Life!

One of the most popular musicals of the 20th century, **Fiddler on the Roof** is the Tony Award-winning sensation that introduced the world to favorite songs like "Tradition!", "Sunrise, Sunset," and "If I Were a Rich Man." Milkman Tevye's world is turned upside down by both the changing political landscape in his home country, and the changing ideals of a younger generation. Set in the area now called Ukraine, today this nearly 60 year old musical resonates in a newly relevant way.



November 30-December 3: Miracle on 34th Street:

A Live Radio Play

Lux Radio Script Adapted by Liz Zazzi

A holiday classic!

The Winni Players annual live radio drama is back! When a department store Santa claims he's the real Kris Kringle, his case gets taken all the way to the Supreme Court. A little girl's belief makes the difference in the 'miracle.' With live Foley effects and a host of on-air personalities, the radio play is an annual highlight!

Sponsored by:



2023 SHOW LISTINGS

WINTER

December 15-31: Cinderella: A Traditional English Panto

By Neil Pankhurst

Don't let the clock run out before you see the biggest panto of them all!

Your favorite family holiday event is back! Filled with bright lights, big costumes, dynamic dancing, silly slapstick for the littles, innuendo for the adults, and a double entendre or two (or three!), our annual English Panto is a treat for ages 3 to 103! "Boo" the villain, "cheer" the hero and join us for an English tradition that has been a holiday staple since the nineteenth century!

We're proud to bring a little old England to New England!



The Winnepesaukee Playhouse Education Department promotes the developmentally appropriate acquisition of theatrical skills, fosters a life-long appreciation of the technique, history, and literature of theatre and its ancillary fields of study, and—above all—seeks to inspire its students to use theatre as a tool to develop empathy, with which they may explore and come to better understand the world.



The Winni Players Community Theatre uses live theatre to provide its members with opportunities for artistic expression, personal growth, and friendship.

We build community through theatre.

NORMANDIN, CHENEY & O'NEIL, PLLC
ATTORNEYS AT LAW

Experience you can rely on. Advice you can trust.

*Wills, Trusts and
Estate Planning*

*Real Estate and
Land Use*

*Commercial and
Corporate Law*

Injury Law

*Civil and Criminal
Litigation*

603-524-4380
(or 1-800-529-0631)

www.ncolaw.com

213 Union Avenue
P.O. Box 575
Laconia, New Hampshire
03247

SHOP. DINE. EXPLORE.



Lakes Region's Premier Shopping Destination

Unique Marketplace Shops
5 Distinctive Restaurants • 4 Inns
Boardwalk, Park & Sculpture Walk
Friday Night Music - July & August

millfalls.com/shop • Routes 3 & 25 Meredith, NH



GOLDEN VIEW
HEALTH CARE CENTER
A Non-Profit Community

The Retreat at Golden View

Short-stay rehab conveniently located in the Lakes Region



You have a choice! Golden View works with hospitals throughout New England, so no matter where your hospital stay may be, you can recover close to home!

The Retreat features private suites with private bathrooms, as well as a tailored therapy plan. We are contracted with many private insurances and Medicare.

To learn more or prebook your stay, please call our admissions department at 279-8111.

Assisted Living • Long-Term Living • Short-Stay Rehab

Meredith, NH • 279-8111 • www.GoldenView.org •



MALONE, DIRUBBO & COMPANY, P.C.
CERTIFIED PUBLIC ACCOUNTANTS

Serving Businesses & Individuals For Over 35 Years

Three Convenient Locations

501 Union Avenue, Laconia 603-528-2241
64 Franklin Street, Franklin 603-934-2942
9 West Street, Lincoln 603-745-3121

www.mdccpas.com

Member AICPA, Private Companies Practice Section, NH Society of CPAs

the
WINNIPESAUKEE
playhouse

FOLLOW US ON



Proud to partner
with Winnepesaukee
Playhouse to provide
another season of
spectacular performances.

Named
Best-In-State
Banks for NH
by Forbes
Magazine
2022



FSB
Franklin Savings Bank
FSBNH.BANK



#HappyUp at The Studio!

Experience the Lakes Region's most joyful and
eclectic shopping experience for yourself!



598 Main Street, Laconia, NH
603-524-8008 • thestudionh.com



**FIRESIDE INN
& SUITES**

Lake Winnepesaukee
Year Round Comfort - Grab & Go Breakfast
Indoor Pool & Hot Tub - Outdoor Pool seasonal

ENJOY the Show!!

603.293.7526 / FiresideinnGilford.com

PLAN FIRST.

Period.

It's about your plan. It's about you.

To have a conversation about your financial plan with an advice-only guy, give me a buzz.

If you're in the trades and own a business—even better.

No suits or ties will be worn to this meeting. And there will be Dad jokes.

36 Country Club Road, Suite 926 – p:603-524-4994 – joel@planfirstperiod.com – www.planfirstperiod.com

Advisory Services through Cambridge Investment Research Advisors, Inc., a Registered Investment Advisor. Cambridge and PlanFirst, LLC are not affiliated.



Altrusa Int'l of
Laconia, NH, USA

Become a member!

*Join with others who are
creating better communities!*

www.altrusalaconia.org
altrusalaconia@gmail.com
Follow us on Facebook



Gilford Home Center
A SMALLER BOX WITH A BIGGER VALUE

gilfordhomecenter.com
603-524-1692
Hours, Mon. - Fri. 7:00 - 5:00
Sat. 8:00 - 3:00
Sun. 9:00 - 1:00



Mon.-Fri. 7:30-5:00, Sat. 7:30-3:00
and Sun. 7:30-1:00
gilfordtruevalue.com
603-524-5366



**LOVERING
AUTO GROUP**

Meredith



4.9



MISIASZEK
TURPIN



MISIASZEKTURPIN.COM

residential | non-residential | historic preservation



Melcher & Prescott INSURANCE

KNOWLEDGE. TRUST. CONFIDENCE.



Since 1862 Melcher & Prescott Insurance has been a proud sponsor of the arts and culture in our community.

Our local professional staff are here to assist you with all your insurance needs including homeowners, automobile, watercraft, business and employee benefits.

We work closely with our clients to secure the proper coverage at the best price!

www.melcher-prescott.com | insure@melcher-prescott.com | 603-524-4535



Best Insurance Company

This is what retirement looks like.

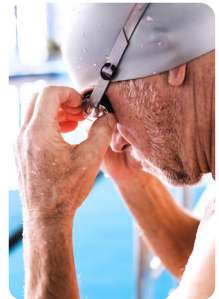
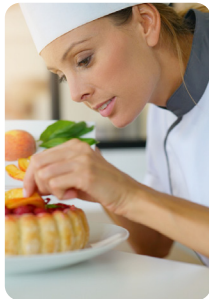


An active community of friends is waiting for you at Taylor.

Taylor Community is located in the beautiful Lakes Region of New Hampshire with campus locations in both Laconia and Wolfeboro. Finding a home at Taylor means more than access to a stunning new cottage or apartment - it means receiving the keys to present and future peace of mind.

Whether you prefer an active lifestyle filled with fitness classes and an extensive lineup of social and recreational opportunities, or would rather enjoy a fine-dining experience with friends after a day spent by the lake...


Taylor is the place for you!



Discover Taylor Community
taylorcommunity.org

Laconia
435 Union Avenue
Laconia, NH 03246

Wolfeboro
83 Rolling Wood Drive
Wolfeboro, NH 03894

 (603) 366-1400 / taylorcommunity.org
A not-for-profit since 1907

The Winnepesaukee Playhouse Presents
the Playhouse Professional Company in

SWEENEY TODD

The Demon Barber of Fleet Street
A Musical Thriller

Music and Lyrics by
STEPHEN SONDHEIM

Book by
HUGH WHEELER

From an Adaptation by
CHRISTOPHER BOND

Originally Directed on Broadway by HAROLD PRINCE
Orchestrations by Jonathan Tunick

Originally Produced on Broadway by Richard Barr, Charles Woodward, Robert Fryer,
Mary Lea Johnson, Martin Richards
in Association with Dean and Judy Manos

SWEENEY TODD

is presented through special arrangement with Music Theatre International (MTI).
All authorized performance materials are also supplied by MTI.
www.MTIShows.com

Production Team

Director.....Timothy L'Ecuyer
Music Director.....Matthew A. Stephens
Stage Manager.....John Findlay
Scenic Designer.....Inseung Park*
Costume Designer.....DW
Lighting Designer.....Tyson W. Miller
Sound Designer.....Thom Beaulieu
Intimacy Director.....Kyrie Ellison
Fight Director.....Cory Lawson
Sound Engineer.....Mark Tulk
Movement Captain.....Kelley Jane Davies
Fight Captains.....Kelley Jane Davies and Rudy Martinez

*Member



UNITED
SCENIC
ARTISTS

The Cast

Sweeney Todd.....Jesse Luttrell
Mrs. Lovett.....Molly Parker
Anthony Hope.....Ethan Yaheen-Moy Chan
Johanna.....Kelley Jane Davies
Tobias Ragg.....David Fine
Judge Turpin.....Rudy Martinez
The Beadle.....John-Michael Breen
The Beggar Woman.....Dalia Aleman
Adolfo Pirelli.....Jason Thomas Sofge
Jonas Fogg.....Robert Hooghkirk

The Orchestra

Keyboard/Conductor.....Luke Molloy
Cello.....Kari Jukka-Pekka Vainio
Clarinet.....Christopher Kelton
Bassoon.....Christopher Foss
Trumpet/Flugelhorn.....Sophie Manoloff
Bass.....Joe Annicchiarico
Percussion.....Kaci Cochran

Thank you to:

Lyvie Beyrent and Gilford High School, Community
Players of Concord, The Costume Studio, Zach Glennon,
Danee Rose Gosselin, Gretchen Gray, Jean's Playhouse,
Plymouth State University Department of Music, Theatre,
and Dance, Seacoast Repertory Theatre, Dennis Schneider

**PLEASE NOTE: this production contains
non-allergenic, water-based theatrical haze as
well as gun shots.**

A Note from the Director

The “demon barber” Sweeney Todd and his diabolical downstairs neighbor Mrs. Lovett have appeared in a variety of media stretching back to the Penny Dreadful series *The String of Pearls* published in the mid-19th century. They are probably best known, however, as they appear in this production: the musical protagonists (or are they the antagonists?) of Stephen Sondheim and Hugh Wheeler’s opus.

“Attending the tale” of Lovett and Todd transports us to the London of the mid-to-late 1800s. We find ourselves in a rapidly industrializing, poverty-stricken era built on entrenched wealth inequality and an almost complete lack of any sort of regulatory social safety net. There is not enough of anything to go around. Someone else getting ahead feels like it means you are falling behind. It is, one might say, an intractable “eat or be eaten” situation.

One of the most evocative parts for me of working on this piece in the rehearsal room and then watching it as a member of the audience is tracing the paths that our better angels—loyalty, friendship, love, empathy, self-sacrifice—take in an attempt to find their way through this story that threatens at every turn to strangle them. It’s like watching a bird try to fly through a hurricane.

Or maybe it’s like being one. Living at a time where our headlines are filled with news of the impacts of an ever-warming planet, the divisions enflamed by our increasingly tribal and vitriolic political and social landscape, and the isolation and despair exacerbated by a pandemic and the technology that purports to connect us... there are days when the bird-in-hurricane metaphor seems unrealistically cheerful.

Sweeney and Lovett’s plan to turn the tables and exact revenge on a world that has been wrenchingly unfair to them is extreme and grotesque. Can any of us honestly claim, however, that we have never felt some portion of the anguish and frustration that undergirds such a choice?

Maybe this bloody revenge play reminds us to look for opportunities, faint as they may be, to take the other path. The moment when someone forgives us even though we don’t feel like we deserve it. Or loves us despite our flaws. The self-sacrificing moments when someone chooses to have less so that we can have more and tells us “nothing’s gonna harm you, not while I’m around” even though they have no earthly idea how they’re going to make good on such a simple yet grandiose promise. And the moments when we do these things for others.

--Timothy L’Ecuyer

From The Winnepesaukee Playhouse Education Department...

GOD THAT'S GOOD!

MRS. LOVETT'S MEAT PIES

INGREDIENTS

Hot Water Crust

- 2 1/2 cups all purpose flour 12oz / 340g
- 3/4 cup hot water 200ml
- 5 tbsp unsalted butter 4.5oz / 75g
- 1/2 tsp salt

Filling

- 1/2 pound ~~priest~~ ground pork
- 1/4 pound ~~lawyer~~ ground beef
- 1/2 large ~~politician~~ yellow onion small dice
- 1 medium ~~actor~~ carrot peeled and diced small
- 1 tbsp olive oil
- 2 tbsp all purpose flour
- 1/2 cup beef stock
- 1 tsp dried ground sage
- 1/2 tsp dried ground thyme
- salt and pepper as needed
- 1 egg lightly whisked

INSTRUCTIONS

Crust

1. In a mixing bowl, stir the flour and salt together until combined. Heat the butter and water together until very hot. Stir the hot water into the flour mixture and stir until it comes together as a ball of dough.
2. Divide the dough into 5 balls of dough, weighing about 130g each. Divide the fifth ball into four smaller balls, these will be for the lid.
3. Take a round glass jar or wooden mold with straight edges (you can use a glass jam jar) and lightly grease it with vegetable oil. Press the mold or the bottom of the jar onto one of the larger ball of dough to flatten it. With your hands, start to mold and pull the dough up the sides of the jar until it's about 3 inches tall. Turn the jar upside down and refrigerate it for 30 minutes or until firm and dry. Gently remove it from the jar. The crust should now stand up straight on it's own.

Filling

1. While the crust is drying, heat a saucepan on medium heat with a bit of oil. Once hot, add the "onions" and cook for 3 minutes until translucent. Add the diced "carrots" and cook for another 5 minutes. Add the "ground pork" and "beef" and start breaking it up into small pieces with a spatula.
2. Add the dried sage and thyme. Season with salt and pepper. Add the flour and stir to combine. Cook for 1 minute. Add the stock and cook until it starts to bubble. Season to taste with salt and pepper. Set aside to cool.
3. Preheat the oven 350F.
4. Fill each standing crust with the...meat filling. Roll out the tops and place one on each pie. Use a bit of egg wash to help adhere the two pieces. Place it on a baking tray and egg wash the top. Cut a few small slits on top for ventilation.
5. Bake for 40 minutes or until golden brown. Let cool before serving to your friends and enemies.

ACT ONE:

Prologue: The Ballad of Sweeney Todd.....	The Company
No Place Like London.....	Sweeney and Anthony
The Worst Pies in London.....	Mrs. Lovett
Poor Thing.....	Mrs. Lovett
My Friends.....	Sweeney, Mrs. Lovett, and Company
Green Finch and Linnet Bird.....	Johanna
Ah, Miss.....	Anthony
Johanna.....	Anthony
Pirelli's Miracle Elixir.....	Tobias and Company
Pirelli's Entrance.....	Pirelli
The Contest.....	Pirelli and Company
The Ballad of Sweeney Todd.....	The Company
Johanna.....	Judge Turpin
Wait.....	Mrs. Lovett
The Ballad of Sweeney Todd.....	The Company
Kiss Me (Part 1).....	Johanna and Anthony
Ladies In Their Sensitivities.....	The Beadle and Judge Turpin
Kiss Me (Part 2).....	Johanna, Anthony, The Beadle, Judge Turpin
Pretty Women.....	Sweeney and Judge Turpin
Epiphany.....	Sweeney
A Little Priest.....	Sweeney and Mrs. Lovett

ACT TWO:

God That's Good.....Tobias, Mrs. Lovett, Sweeney, and Company
Johanna..... Anthony, Sweeney, Johanna, Beggar Woman
By the Sea.....Mrs. Lovett and Sweeney
Wigmaker Sequence.....Sweeney and Anthony
The Letter.....Quintet
Not While I'm Around.....Tobias and Mrs. Lovett
Parlor Songs.....The Beadle, Mrs. Lovett, and Tobias
Fogg's Asylum.....The Company
City on Fire.....The Company
Searching.....The Company
The Judge's Return.....Sweeney and Judge Turpin
Final Scene.....Sweeney and Mrs. Lovett
The Ballad of Sweeney Todd.....The Company

PLACE:

London: Fleet Street and environs

TIME:

The 19th Century



Authorized BOSCH Service Center



(603) 524-5016 

www.germanmotorsportsusa.com

PAVING OUR WAY TO THE FUTURE!



BETWEEN NOW AND SEPTEMBER 2024

the Winnepesaukee Playhouse needs to **raise \$200,000** for important improvements to our campus. Your generous donation will help us to resurface campus roadways and parking lots for a safer, more enjoyable theatre experience!

Donate online at www.winnepesaukeeplayhouse.org!

**THANK
YOU FOR
YOUR
SUPPORT!**

The Cast



Dalia Aleman (The Beggar Woman) This is Dalia's 3rd production at the Winnepesaukee Playhouse and she is so happy to return to her favorite summer destination! Previous shows on this stage were *Oliver!* and *Glorious!* She currently resides in South Florida where she has appeared in productions all over the area, including: Rosalie in *#Graced* (world premiere), Bea Singer in *Honeymoon in Vegas* (Regional premiere), Randa in *Savannah Sipping Society*, Mother Superior in *Sister Act*, Victoria Grant in *Victor Victoria*, The Duchess in *Nice Work If You Can Get It*, Guido's Mother in *Nine*, Lottie Child in *Crazy For You* and Alma Hix in *The Music Man*, starring John Tartaglia. When not performing on a stage, Dalia keeps busy with her Esty shop, Show Globes by Dalia. Many thanks to Tim and the incredible team at the Winnepesaukee Playhouse for giving her another opportunity to do what she loves with this stellar cast and crew! Much love always to her sons and number one fans, Austin and Tyler. This one's for Mom. www.DaliaAleman.com



John-Michael Breen (The Beadle) couldn't be happier to be returning to the Playhouse for his fourteenth production and his favorite Sondheim musical. He last appeared in *Sweeney Todd* in 2008 as Tobias (StageCoach Productions). Notable Playhouse credits include *RED* (Ken), *Lost in Yonkers* (Jay), *Peter and the Starcatcher* (Ted), *A Midsummer Night's Dream* (Helena), *The Rocky Horror Show* (Riff Raff), *The Graduate* (Benjamin), and *Chicago* (Amos Hart), for which he won the 2020 NHTA for Best Supporting Actor. In 2017, he co-directed *Lord of the Flies* for the Education Department with Artistic Director Timothy L'Ecuyer.

International: *The Great Gatsby* (Edinburgh Fringe). National Tour: *Rock of Ages* (Lonny, 10th Anniversary Tour). NYC Labs: *Sam's Room*, Nikki Sixx's *The Heroin Diaries*. Regional: many. Endless thanks to the Playhouse, especially Tim. Endless love to his family for their constant support. XOD+A. @callmebyjm



Ethan Yaheen-Moy Chan (Anthony Hope) (He/Him) is an actor from Queens, New York City and a recent graduate from Western Connecticut State University with a BFA in Musical Theatre. Selected regional credits include *Double Helix* (Goodspeed Opera House, Bay Street Theatre world premier), *The Sound of Music* (NCCA at Jean's Playhouse), *The Joe Boy* (Playwrights Center of San Francisco), and the College Light Opera Company. Past educational credits include *Sweeney Todd* (Anthony Hope), *Big Love* (Leo), *A Little Night Music*, *Head Over Heels*, *Allegro*, and more. Ethan is thrilled to be making his debut at the Winnepesaukee Playhouse!



James W. Hill
Owner

Mailing Address:

Post Office Box 101

Moultonborough, NH 03254-0101

Cell: 603-476-2521

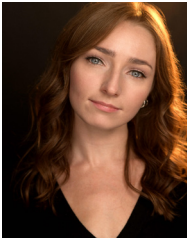
Fax: 1-877-495-6388

Have Laptop. Will Travel...

email: jim@birchhill.net

Visit us online at www.birchhill.net

The Cast



Kelley Jane Davies (Johanna) is so thrilled to be returning to the Winnepesaukee Playhouse among her favorite creative family. Originally from Avon, CT, Kelley is a professional actress and singer based in New York. She has been seen on the Playhouse's stage as Adam in *The Complete Works of William Shakespeare (Abridged) [Revised]*, Mollie in *The Mousetrap*, Mary in *Mary's Wedding*, Young Camille in *The Waltz*, Elaine in *The Graduate*, and many of the Playhouse's past musicals and pantos. Kelley has performed across several regional theatres in the New England Area. Kelley won the 2017 and 2018 New Hampshire Theatre

Awards for Best Supporting Actress in a Professional Production. Amid pursuing her masters in Education at City College of New York, Kelley has spent her past year working for Princess Cruise Lines as a Resident Guest Entertainer. She hails from the Greater Hartford Academy of the Arts and Emerson College. Alongside performing and teaching, Kelley loves to run, hike, do puzzles, play with puppets, eat, and sleep. For more on Kelley, visit kelleyjanedavies.com or [@kelleydavies](https://www.instagram.com/kelleydavies).



David Fine (Tobias Ragg) is delighted to be making his Winnepesaukee Playhouse debut. A North Carolina native currently based in NYC, he is a graduate of UNC-Chapel Hill and the London Academy of Music and Dramatic Art. Recent credits include *Charlotte's Web* (TheatreWorksUSA) and *Ragtime* (PlayMakers Repertory Company).



Robert Hooghkirk (Jonas Fogg) is delighted to be back at the Playhouse this season! Previous credits at the Winnepesaukee Playhouse: *Agatha Christie's Murder on the Orient Express*, *Sleeping Beauty: A Traditional English Panto*, *Oliver!*, and *Robin Hood*. Favorite credits include: the national tour of *SPAMILTON: An American Musical Parody* (King George III), *The Golden Girls Musical Parody: Pride Edition* (Dorothy Zbornak), and *The Ninth Guest* (Peter Daly). He has performed with Disney Cruise Lines, The Link Theatre, FC Bergman, Lexington Children's Theatre, and Chamber Theatre of Boston. TV Pilot: *A Class Act* (Randy) with Morbid Little Girl Productions. Thanks to all the artists/creative minds on and off stage!



Jesse Luttrell (Sweeney Todd) is thrilled to be returning to the Winnepesaukee Playhouse after playing Bill Sikes last season in *Oliver!* Hailed as "dazzling" by legendary Village Voice columnist Michael Musto, Jesse's favorite roles include Frank-N-Furter in *Rocky Horror*, Pharaoh in *Joseph*, Munkustrap and Rum Tum Tugger in *Cats*, Emcee in *Cabaret*, and he's played Gaston in *Beauty and the Beast* multiple times all over the country. Jesse has also enjoyed an international concert career. Read more at www.jessesings.com. And say hi! on insta [@jesseluttrell](https://www.instagram.com/jesseluttrell)



Rudy Martinez (Judge Turpin) has performed leading roles in *Man of La Mancha*, *Anyone Can Whistle*, *Sweeney Todd*, *Into the Woods*, *Fiddler on the Roof*, *A Christmas Carol*, *Evita*, *The Fantasticks*, *The Addams Family*, *Kiss of the Spider Woman*, and *Assassins*. When not performing, he is the man behind Man Bakes Cake. Television: *Cake Wars* and *Halloween Baking Championship* (Winner - Season 1). [@manbakescake](https://www.instagram.com/manbakescake)

The Cast



Molly Parker (Mrs. Lovett) is an actor, singer, and voice artist based in New York's Hudson Valley. Molly is delighted to return to the Winnepesaukee Playhouse after appearing in such productions as *Private Lives*, *Mamma Mia!*, *The Graduate*, *The Norman Conquests Trilogy*, and *Lost in Yonkers*. Recent regional credits include *The Thanksgiving Play* (WAM Theatre), *The Moors* (Bridge Street Theatre) *Papermaker* (Shadowland Stages), *Emilie*, *House of Blue Leaves* (Wellesley Rep), and *Constellations* (Tangent Theater).



Jason Thomas Sofge (Adolfo Pirelli) is thrilled to be back at the Winnepesaukee Playhouse having recently appeared as Harry Bright in *Mamma Mia!* Credits: The Constable in *Fiddler on the Roof* (Broadway 1st National Tour), Elvyra in *From the House of the Dead* (Metropolitan Opera, National Opera de Paris, Staatsoper im Berlin), u/s Maitre D in *The Merry Widow* (Metropolitan Opera), Tommy Fatty, *Fatty No Friends* (Soho Playhouse). “Special thanks to the rockstar team at Firestarter Entertainment!”

The Orchestra

Joe Annicchiarico (Bass) is a bassist, theorist, and arranger hailing from Newburyport, Massachusetts where he lives with his wife Risa, his son Luca, and newborn daughter, Chloe. Joe received his Master of Arts in Music Theory from Tufts University and Bachelor of Arts in Double Bass Performance from the University of New Hampshire. As a bass player, Joe is highly sought after across a multitude of genres and styles, and is currently a regular member of the Portsmouth Symphony Orchestra and Cape Ann Symphony. Equally comfortable on upright and electric bass, he is also in demand as a bass player for theater pit ensembles, playing with various groups all over the North Shore (MA) and greater New England areas. Formerly, Joe studied bass with John Hunter, Don Williams, and John Lockwood.

Kaci Cochran (Percussion) is excited to join the orchestra for his first production with the Winnepesaukee Playhouse! Kaci graduated from Plymouth State University in 2023 with a bachelor's degree in music. During his time at PSU, Kaci has worked with several musical groups on campus, and was accepted into the 2020 CBDNA Eastern Division Intercollegiate Band at Temple University. Kaci has also had the opportunity to work on world premiere performances, including Nicholas White's *The Fire and the Rose*. During the summer of 2022, he served as the Operations Manager for the New Hampshire Music Festival's Classical Series. Kaci has worked as a pit musician both at PSU under the direction of Justin McCarthy, and off campus for several community theatre groups.

The Orchestra

Christopher Foss (Bassoon) (he/him) is a freelance musician and teaching artist, living in Brooklyn, NY. He is a professional bassoonist, a student of Kinko-ryu shakuhachi and the Alexander Technique, and a member of the Broadway International Tour of *The Sound of Music*, playing clarinet and bassoon across Southeast Asia. He has performed extensively with Los Angeles and New York based creative musicians in contemporary music groups such as WildUp, SEM Ensemble, and in house concerts, festival and regional orchestras across the United States and abroad, and was formerly contrabassoonist with the American Youth Symphony and Bakersfield Symphony Orchestra. He holds an MFA from California Institute of the Arts, and BM from the University of New Hampshire with additional performance studies at the Gaetano Donizetti Institute in Bergamo, Italy, Lynn Conservatory of Music, and with the Chikumeisha school in Tokyo, Japan.

Christopher Kelton (Clarinet) is a part-time woodwind professor by day and a pit orchestra musician by night. He can also be found in the horn section of the popular commercial group, Disco Dream. Some of his favorite performances have been flute, piccolo and clarinet for *Christmas Carol* at Trinity Rep in Providence, clarinet, Eb clarinet, bass clarinet and baritone saxophone in *The Music Man* at Theatre by the Sea, clarinet, Eb clarinet and bass clarinet in *Les Miserables*, *Phantom of the Opera*, *Matilda*, and *Mary Poppins* at the Company Theatre, and clarinet in *Fiddler on the Roof* at New Repertory Theatre. He has played clarinet, and bass clarinet, soprano and alto saxophones at the Winnepesaukee Playhouse for *Urinetown* in December of 2019. He's very glad to be back!

Sophie Manoloff (Trumpet/Flugelhorn) is a New York based trumpet player who doubles on Flugelhorn, Piccolo Trumpet, plays piano, and sings. After graduating from NYU '21, her most notable credits include playing for the National Tour of *Fiddler on the Roof* in 110 cities across the US & Canada, *The Music Man* on Broadway with Hugh Jackman & Sutton Foster, 2023 *Ragtime* revival concert with original cast, and Harry Styles music video 'Music for a Sushi Restaurant'. Now an active freelancer in the city, you can catch her subbing on Broadway (*NYNY*, *Wicked*, *Chicago*), playing for churches, house bands, cabaret, brass bands, and quintet chamber concerts. She will be heading back out on the road with the First National Tour of *Peter Pan* in the winter.

Luke Molloy (Conductor/Keyboard) is thrilled to be part of his first production at the Winnepesaukee Playhouse. Music direction credits include *Jersey Boys* (Norwegian Cruise Line, Cape Playhouse). Other regional credits include *Escape to Margaritaville* (North Shore Music Theatre); *Gypsy* and *Jersey Boys* (Theatre Aspen); *Once on This Island* (SpeakEasy Stage Company); and *Songs for a New World* (Seacoast Repertory Theatre). Luke is a frequent performer at Club Café in Boston's South End and a graduate of Berklee College of Music. Thanks to Matthew, Tim, and the Playhouse staff for inviting him into the *Sweeney Todd* family, and to his family for their support!

Kari Jukka-Pekka Vainio (Cello) grew up in Finland and studied cello in Helsinki Conservatory, as well as Math and Computer Science in Helsinki University. In 2017 he moved to Plymouth after 20 years in UC Berkeley and Silicon Valley tech companies. He works for Plymouth State University and freelances as a cellist. He is a principal cello in the Lakes Region Symphony Orchestra.

About the Authors

Stephen Sondheim wrote the music and lyrics for *Saturday Night* (1954), *A Funny Thing Happened on the Way to the Forum* (1962), *Anyone Can Whistle* (1964), *Company* (1970), *Follies* (1971), *A Little Night Music* (1973), *The Frogs* (1974), *Pacific Overtures* (1976), *Sweeney Todd* (1979), *Merrily We Roll Along* (1981), *Sunday in the Park with George* (1984), *Into the Woods* (1987), *Assassins* (1991), *Passion* (1994) and *Road Show* (2008) as well as lyrics for *West Side Story* (1957), *Gypsy* (1959) and *Do I Hear a Waltz?* (1965) and additional lyrics for *Candide* (1973). Anthologies of his work include *Side by Side by Sondheim* (1976), *Marry Me a Little* (1981), *You're Gonna Love Tomorrow* (1983), *Putting it Together* (1993/99) and *Sondheim on Sondheim* (2010). He composed the scores of the films *Stavisky* (1974) and *Reds* (1981) and songs for *Dick Tracy* (1990) and the television production *Evening Primrose* (1966). His collected lyrics with attendant essays have been published in two volumes: *Finishing the Hat* (2010) and *Look, I Made A Hat* (2011). In 2010 Broadway's Henry Miller's Theatre was renamed The Stephen Sondheim Theatre in his honour; in 2019, London's Queens Theatre was also renamed the Sondheim.

Hugh Wheeler was a novelist, playwright and screen writer. He wrote more than thirty mystery novels under the pseudonyms Q. Patrick and Patrick Quentin, and four of his novels were transformed into films: *Black Widow*, *Man in the Net*, *The Green-Eyed Monster* and *The Man with Two Wives*. For films he wrote the screenplays for *Travels with My Aunt*, *Something for Everyone*, *A Little Night Music*, and *Nijinsky*. His plays include *Big Fish*, *Little Fish* (1961), *Look: We've Come Through* (1961) and *We Have Always Lived in the Castle* (1966, adapted from the Shirley Jackson novel), he co-authored with Joseph Stein the book for a new production of the 1919 musical *Irene* (1973), wrote the books for *A Little Night Music* (1973), a new production of *Candide* (1973), *Sweeney Todd, the Demon Barber of Fleet Street* (1979, based on a version of the play by Christopher Bond), and *Meet Me in St. Louis* (adapted from the 1949 M-G-M musical), contributed additional material for the musical *Pacific Overtures* (1976), and wrote a new adaptation of the Kurt Weill opera *Silverlake*, which was directed by Harold Prince at the New York Opera. He received Tony and Drama Desk Awards for *A Little Night Music*, *Candide* and *Sweeney Todd*. Prior to his death in 1987 Mr. Wheeler was working on two new musicals, *Bodo* and *Fu Manchu*, and a new adaptation of *The Merry Widow*.

THE FITNESS
Edge

WE OFFER
LIVE & ZOOM
CLASSES


BOOT CAMP PLUS | INDOOR CYCLING | TOTAL BODY TONE
BARRE | POSTURE | YOGA | ZUMBA | TRX AND MORE!

169 DANIEL WEBSTER HIGHWAY
MEREDITH NH

78 WHITTIER HIGHWAY
MOULTONBOROUGH NH

OFFERING NH LAKES REGION 2 CONVENIENT HEALTH CLUB LOCATIONS!

(603) 279-0411
WWW.THEFITNESSEDDGENH.COM



The Production Team

Melody Carter (Costume Assistant) is new to the Winnepesaukee Playhouse this year. The past several years they have been the Wardrobe Lead/stitcher at the Springer Opera House in Columbus, GA. She is also a student at Columbus State University. A few of her favorite shows that she has been involved with are *Cinderella*, *The Color Purple*, and *Bodyguard*. She is very excited to share/learn in her first season with the Winnepesaukee Playhouse.

Kyrie Ellison (Intimacy Director) (she/they) is a performance maker and Intimacy Director based in New Hampshire. Her work utilizes the choreographic, through stage combat and movement, to build femme communal spaces & speculative narratives to confront oppressive forms. She's curious about the stories we tell each other to "just get through it" and how they relate to the fairy tales and tropes made popular by writers. She is passionate about the facilitation of safe spaces for artists, audiences, and creatives to engage with their communities, both locally and globally. Her work has been seen on stage at the Winnepesaukee Playhouse, Bank of New Hampshire Stage (theatreKAPOW), and Sarah Lawrence College. She's ecstatic to be working with the Winnepesaukee Playhouse on another performance. Currently, she works as the Assistant Director of Theatre at New Hampton School. Past credits include, but are not limited to *Tiny Beautiful Things*, *Ken Ludwig's Lend Me a Tenor*, *Mr. Wolf*, *Breadcrumbs*, *Weekend Warrior*, *Athena*, *Small Mouth Sounds*, *Spring Awakening*, and *Cabaret*. www.ellisonarts.com

Francisco Fialho (Scenic Carpenter) is a newly graduated theatre technician/carpenter. Francisco has built a number of sets, previously working on shows in Keene State College as both a shop hand and run crew.

John Findlay (Stage Manager) Graduate of Plymouth State University, NH. B.A. Theatre Arts, Focus in Lighting Design and Acting. Touring: *Oedipus*, *Buddy: The Buddy Holly Story* (2020, 2021), *Menopause the Musical*. Regional: *The Mountaintop*, *Betrayal*, *Dani Girl*, *Hooligans and Convicts* (The Winnepesaukee Playhouse), *Noises Off*, *Deathtrap* (The Cape Playhouse) among others. John is thrilled to be spending another summer back home in Meredith as well as with the Playhouse! Much love to Mom.

Gwen Elise Higgins (Scenic Charge Artist) is a multi-hyphenate theatre artist from the Midcoast of Maine working throughout New England. Graduated from University of New Hampshire with a BA in Theatre. A lifelong learner and artist experimenting in countless mediums with varying degrees of success and welcome failure. Painter, designer, actor, etc. www.gehiggins.com

Libby Hinshaw (Electrics Supervisor) is a recent graduate with a focus in lighting tech and design. She previously designed *After Jane* (Co-Designer), *Silent Sky*, *Los Vendidos*, and *Bamboo Box* at The Janet Kinghorn Bernhard Theater. Her assistant design credits at the JKB Theater include Heddatron and The Sor Juana Project. Some of her technical credits are *Rent* at A Contemporary Theater of Connecticut; *The Place That Made You*, *Eurydice*, *And Baby Makes Seven*, *The Chaparral*, *John Proctor is the Villain*, *Somewhere: A Primer for the End of Days*, *Springfest*, *Radium Girls*, *The Harvest*, and *The Hour We Knew Nothing of Each Other* at the JKB Theater. Libby holds a BS in Theater and a BA in Psychology from Skidmore College.

The Production Team

Tyson W. Miller (Lighting Designer) is thrilled to be returning to the Winnepesaukee Playhouse! Tyson is a London based designer who has just completed a Master's of Arts in Light in Performance from Rose Bruford College. Previous Winnepesaukee credits include *Avenue Q*, *On Golden Pond*, and *Ghost: The Musical*. He was nominated for a New Hampshire Theatre Award for the Winnepesaukee Playhouse's production of *Mary's Wedding*. His work has also been seen in concerts, museums, and nightclubs including Jim Brickman's National Piano Tour, the New England Ski Museum, and The ACT, an immersive nightclub experience in Dubai, United Arab Emirates. More information can be found at www.twmlighting.com.

Inseung Park (Scenic Designer) is back to working with the Winnepesaukee Playhouse for the production, *Sweeney Todd*, season 2023 since he had designed Winnepesaukee Playhouse's *Glorious*, *Guess Who's Coming to Dinner*, *Mary's Wedding*, *The Graduate*, *The Waltz*, *Lost In Yonkers*, and *The Business of Murder*. He has designed the set for a wide variety of live performances across the country - Illinois, Indiana, Ohio, New York, New Hampshire, New Mexico, Oregon, and Texas. Currently, he teaches scenic design and numerous courses – rendering, CAD, and digital media at the University of New Mexico. His designs have been nominated for the best scenic design for several prestigious awards including Jeff Award in Chicago, and New Hampshire Theatre Awards. He holds an MFA in scenic design at UT, Austin.

Natalya Salvati (Wardrobe Supervisor) is a senior attending the University of New Hampshire, double majoring in Design and Technology and Women's Studies. This is Natalya's first season with the Winnepesaukee Playhouse! Natalya's previous experience includes two summer seasons with Prescott Park Arts Festival (*Footloose* and *You're A Good Man Charlie Brown*) and Collegiate experience at UNH. The university experience includes stage managing for the UNH theatre department and theatre club: *Mask and Dagger (Roe, Anne of Green Gables, Hecuba, Tartuffe, She Kills Monsters, The Shaking Earth)*, assistant stage managing at UNH (*Into the Woods, Hershel & the Hannukah Goblins, and We the People*), in depth costume based independent studies, costume design, wardrobe crew (*The Odyssey*), and carpentry. Natalya is very excited about the opportunity to wardrobe supervise and work with all of the different casts and creative teams!

Matthew A. Stephens (Music Director) Versatile Music Director and pianist Matthew Stephens has performed in venues ranging from Lincoln Center to Feinstein's/54Below alongside Broadway luminaries including Norm Lewis and Mary Testa. NATIONAL TOUR: *The Sound of Music* (Associate Conductor), NEW YORK/OFF BROADWAY: *The Body Politic* (NYMF), *Urinetown* (Blue Hill Troupe). REGIONAL: *Sweeney Todd* (Seacoast Rep), *The ChER Show* (Gateway Playhouse), *Gypsy* (Arizona Broadway Theatre), *Into the Woods* (Wolfbane Productions). CONCERT: *Yours Sincerely, Stephen Sondheim* (Princeton Festival), *My Fair Lady* (Utah Symphony), *Witches Bitches & Divas!* (GreenRoom 42). A strong advocate for new works, Matthew collaborates with the music teams for the American Opera Project, American Lyric Theatre, and NYU-Tisch MT Writing Program. EDUCATION: UNC School of the Arts (MM) James Madison University (BM). @maspianist

The Production Team

Mark Tulk (Sound Engineer) is an accomplished audio/visual artist from Melbourne, Australia, with over 15 years of experience creating dynamic digital media for music, film, theatre, installation, and dance. With a Master's degree in Music (Studio Technology), he is a versatile composer, sound designer, photographer, recording artist and performer. He has toured nationally with renowned Southern-Gothic, Alt-Country musician/storyteller, Jim White, and mastered recording artists from Loris Holland (Mariah Carey, Whitney Houston, Lauryn Hill, Jeff Buckley) to Ireland's folk legend Andy White (Floating World Records). Mark's talent for blending music and sound effects to create immersive theatrical experiences has earned him recognition as a winner of the New Play Festival at the University of Colorado Boulder for *Unspoken*, a production that showcased his artistic vision and technical skill. He has also contributed to other notable projects, including *Maps to Nowhere* by Aesthesis, Brisbane, Australia, and *Food: Tender Buttons* by Gertrude Stein, Theater for the New City, NYC. As the founder of MarkTulkDigital.Media, Mark collaborates with clients worldwide, leveraging his expertise to create captivating digital media. He is also involved in Imogen Heap's Creative Passport initiative, which empowers artists to take control of their digital identities and fosters better communication within the industry. Previous sound design for theatre projects include: *The Curious Incident of the Dog in the Night-Time* (Silver Center for the Arts, NH), *Tartuffe* (C.D. Smith II Theatre, NY), *Food: Tender Buttons* (Theater for the New City, NYC), *Cabaret Kalisz* (Theater O, Boulder, CO), *Eurydice* (Boulder, CO), *Ophelia | Leaves* (Ruby Slipper Women's Theatre Festival, Milton Rhodes Center for the Arts, Winston-Salem, NC); *Unspoken* by Kevin Crowe (Winner of the New Play Festival, University of Colorado Boulder), and *Maps to Nowhere* (Brisbane, Australia)

E. Wilson (General Technician) is an audio technician based out of Atlanta. Elijah learned how to do theatre from the excellent Gainesville Theatre Alliance, a joint program between Brenau University and The University of North Georgia, and their mentor Stuart Beamen. In their off time, Elijah enjoys reading, listening to music and walking through nature.

Nick Winkler (Props Supervisor) is thrilled to be joining as the props supervisor at the Winnepesaukee Playhouse this season. Previous experience includes prop master for *Alice and Wonderland* and *The Enlightenment of Percival Von Schmutz* at Adirondack Theatre festival. Other prop coordinator credits include *Significant Other*, *She Loves Me*, *The Nutcracker Ballet*, and *Proof*.

DW (Costume Designer) Theatrical work has appeared regionally across the country. NYC design credits include NYMF, NYC FRINGE, Theatre Row, The Mint, Cherry Lane, APAC, Prospect Theatre Company, Gallery Players, The Gym @ Judson Church, etc... Broadway Associate & Assistant Credits include: *RACE*, *Everyday Rapture*, *Cinderella*, *The Threepenny Opera*, *The Apple Tree*, *The Wedding Singer*. Feature Film Designs include: *Little Sister* and *Peter & Vandy*. Styles for Broadway.com. Guest stylist for The Skivvies. Resident Designer at the New York Film Academy and The Actors Studio Drama School.

The Common Man Family – Setting the Stage for Uncommon Dining



Bay Point at Mill Falls • (603) 279-2253

theCMan.com

Church Landing at Mill Falls • (603) 279-5221



Chase House at Mill Falls • (603) 279-3003

OPEN MAY - SEPTEMBER! • (603) 279-3445



Winnepesaukee Playhouse
Merchandise
For Sale in our Lobby!

Permanent Staff

Thom Beaulieu (Managing Director/Sound Designer) is pleased to be a part of the staff at the Playhouse. An award-winning lighting and sound designer, Thom holds a BFA in Drama from Carnegie Mellon University's School of Drama, as well as an MS in Physics from Georgia State University. He enjoys golf, boating, and poker, and lives in New Hampton with his wife Meredith and daughter Molly.

RJ Bogues (Assistant Technical Director) is excited to be here for his first season as an ATD, as well as his third season at the Playhouse. He is a WCSU alumni originally from small town New Fairfield, CT. He has worked previously as a carpenter in UBU at WCSU, *Spamalot* at Musicals at Richter, and *Godspell* at ACT of CT, with some small technical director credits in *Shrek the Musical* at Musicals at Richter, and *The Nightman Cometh* at CCSU. Randal has also acted on occasion, appearing in shows such as *Glorious!* (Bellhop 1) in the Playhouse's 2021 season. He thanks you for coming, and hopes that you will enjoy what the Winnepesaukee Playhouse's 20th Season has to offer!

Amanda Dickinson (Production Manager) came to the Playhouse from a background in healthcare, having practiced medical Speech-Language Pathology for 18 years. She holds a Bachelor of Science in Speech and Hearing from Elmira College in New York, and a Master of Science in Speech-Language Pathology from The MGH Institute of Health Professions in Boston. After joining the Playhouse in 2017 as a community theatre actor, Amanda went on to work with the Professional Company and the WP Education Department, while also serving for five years on the Winni Players Community Theatre steering committee. Favorite Playhouse credits include *M*A*S*H* (Bridget), *Company* (Assistant Stage Manager), *Steel Magnolias* (Producer, Properties Coordinator), *The Complete Works of William Shakespeare (Abridged) [Revised]* (Wardrobe Supervisor/Running Crew), *The Wolves* (Stage Manager), *Oedipus Rex* (Stage Manager), and *[title of show]* (Stage Manager). Amanda joined the permanent Playhouse staff as Production Manager in 2023.

Donna Findlay (Bookkeeper) joined the Playhouse in 2015 after retiring from a 21 year career at a public utility in Manchester, NH and spending 5 years as a para-educator in the Inter-Lakes School District here in Meredith. She gives unending love and gratitude to Jim, Cortland, John, and grandson Jimmy.

Matthew Hutchens (Technical Director) started at the Winnepesaukee Playhouse originally as a carpenter for 2021 season. He has stuck with us since then as the assistant technical director for 2022 and is now the technical director for 2023. Matthew's goals, as the technical director, are to teach others while also creating beautiful sets for the stage. This will be his first full season as a TD.



Permanent Staff

Cory Lawson (Director of Education and Community Engagement/Fight Director) is a professional actor, director, and theatre educator. He is currently working on his dissertation for his Ph.D. in Interdisciplinary Fine Arts at Texas Tech University, where his research is in theatre festivals and devised works. He has devised and performed in several shows with the Dutch theatre company Orkater, both in Amsterdam and New York City. Cory has also created work with The Living Theatre and helped to found Ready Set Go Theatre, which created the world's first Shakespeare Webisodes. As an actor and director, Cory's work has been seen professionally in New York as well as in regional theatres across the country. He has also appeared on screen in national commercials and various television episodes. Cory holds his MFA in acting from The New School for Drama and a BA in Theatre: Performance and Dramaturgy from Roanoke College. He has served as the Associate Director of Education and Outreach at the Alabama Shakespeare Festival, the Artistic Director of The Burktech Players (a neurodiverse theatre company in Lubbock, Texas), and the Director of The Wallace Weekend Players in Levelland, Texas. Most recently, Cory co-founded and served as the Artistic Director of The Outside In Festival, a new nonprofit Theatre Festival showcasing devised works through the fostering and presentation of both national and international artists. He's thrilled to join the leadership team at the Winnepesaukee Playhouse and is looking forward to meeting and working with everyone in the community.

Timothy L'Ecuyer (he/him/his) (Artistic Director/Director) is thrilled and grateful to begin a new chapter at the Winnepesaukee Playhouse, having previously served as Director of Education from 2014 to 2022. His directing credits at the Playhouse include *The 39 Steps*, *Red, Grace and Glorie*, *A Midsummer Night's Dream*, *The Rocky Horror Show*, *Mary's Wedding*, *California Suite*, *The Complete Works of William Shakespeare (Abridged) [Revised]*, *SHOUT! The Mod Musical* and fourteen productions with the Education Department. Mr. L'Ecuyer has BAs in theatre and English from Keene State College as well as an MA and MFA in theatre education and applied theatre from Emerson College. He is a former president of the New Hampshire Educational Theatre Guild, an Equity stage manager, and a Teaching Lecturer in the Music, Theatre and Dance Department at Plymouth State University, where he directed *Our Town*, *An Enemy of the People*, *The Curious Incident of the Dog in the Night-Time*, and *Urinetown*. He has worked with many New Hampshire and Boston area theatres including American Stage Festival, Barnstormers, theatre KAPOW, Peacock Players, StageCoach Productions, Greater Boston Stage Company, the Nora Theatre Company, and Underground Railway Theater. He would like to thank his parents, Peter and Linda L'Ecuyer for (among many other things) supporting the Playhouse in NH Gives this year. He'd also like to thank the following people for their support: Gail Barrett, Laurie Felgate, Daniel Patterson, Mike Richardson, Sharon and Terry Richardson, Renée Speltz, Thomas Staley, and Laura Stephan. timothylecuyer.com

Lesley Pankhurst (Patron and Company Services Director) is one of the founders of the Winnepesaukee Playhouse. Lesley is a graduate of Wellesley College with an MA in Arts Administration and Cultural Policy from Goldsmiths College, University of London. In addition to serving as the Marketing Director of the Playhouse for its first 13 years, she has also designed costumes for many of its productions and has twice been the recipient of the NH Theatre Award for Best Professional Costume Design for *Two Rooms* (2007) and *The Glass Menagerie* (2008). She is the proud mom to her daughter, Sophie, cat Sasha, and wife to the proudly retired, Neil. Much love and appreciation to Lyn Osborne Winter.

98.3 Frank^{fm}™

THE SOUNDTRACK OF THE LAKES REGION!

**The community we service
is the community we support.**

We thank our local communities for trusting us to be there when they need us, and are proud to do our part in supporting them.



Reliable Deliveries | Responsive Service


www.deadriver.com



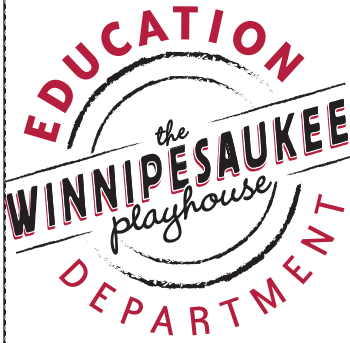
NEW
HAMPTON
SCHOOL

Where Aspiring Artists
TAKE CENTER STAGE

Whether the arts are a passion or a hobby, there are ample opportunities for professional-level learning at New Hampton School. From the stage to the recording studio, at the ceramics wheel or in the animation lab, our students create in every corner of campus.

 www.newhampton.org





The Winnepesaukee Playhouse Education Department promotes the developmentally appropriate acquisition of theatrical skills, fosters a life-long appreciation of the technique, history, and literature of theatre and its ancillary fields of study, and—above all—seeks to inspire its students to use theatre as a tool to develop empathy, with which they may explore and come to better understand the world.



Educational Programming at the Winnepesaukee Playhouse includes:

- Four fully realized productions annually for students ages 8-18
- Summer camps for students ages 5-12
- Focused summer training for students ages 13-18
- Classes and workshops for participants of all ages
- Post-performance talkbacks
- The Symposium Series
- Backstage tours
- Informative articles in playbills
- Teacher training
- College internships
- Theatre and arts education advocacy



For more information...

winnepesaukeeplayhouse.org/education
education@winniplayhouse.org



A FULL SERVICE LAW FIRM

Estate Planning and Probate
Business & Non-Profit
Real Estate
Employment & Labor
Municipal

Land Use & Development
Telecommunications
Litigation
Environmental
Utility

COUNSELING INDIVIDUALS, BUSINESSES,
ORGANIZATIONS AND MUNICIPALITIES
THROUGHOUT NEW HAMPSHIRE

DONAHUE, TUCKER & CIANELLA, PLLC

**PROUDLY SUPPORTING THE ARTS
FOR OVER 30 YEARS**

OFFICES IN MEREDITH, CONCORD, PORTSMOUTH, & EXETER, NH

WWW.DTCLAWYERS.COM

1-800-566-0506

Thanks

*Thank you for recognizing that art matters.
It takes everyone working together to continue to create great theatre.*

Directors' Circle

\$25,000+

Anonymous
Anonymous
Paul and Sharon Steinwachs

\$10,000+

Anonymous
The Baker Family
Beth and Rich Compson
Richard and Carol Gerken
Jodie Herbert and Rusty McLearn
NH Charitable Foundation
New Hampshire State Council
on the Arts
The Shubert Foundation

\$5,000+

Laura and Gary Stephan

\$2,500+

Gloria and Irving Fox
Ellie Gordon
The Greater Lakes Region
Children's Auction
John & Muff
Ambassador Paul Speltz and
Renee Speltz
Anita E. Springer

\$1,000+

Anonymous
Ray and Karen Abramson
Marc and Carol Bard
Eden and Nate Bowditch
Mike and Lisa Brien
Jim and Leslie Chapman and
Meredith Whole Living Center
Judy Cookman
Ray Craigie and Pam Smarling
Chuck and Diane Fray
Liz and Bob Gabel
James Whittredge Hill
Paul and Beverly Jaques
David and Joanne Jeannette
Gerald Kadish
John and Margie Kreidler
Louise and Sandy McGinnes
Susan and Douglas McLane
Sharon and Tom Messmore
Debra Nash
Kate O'Brien
Neil and Lesley Pankhurst
Barbara Pitsch
John Robbins
Jim and Judi Rogato
Jason and Deanne Sargent
Carolyn S Scattergood
Graham and Julia Thomson
Barbara and Gordon Webb
Whitney Werner
Barbara Zeckhausen

to YOU!

Actors' Circle

\$500+

Michael Ames/Half Moon Enterprises, Inc
James Burke
Kelly Dunn
The Findlay Family
John and Carol Ford
Katie Guilmett
Susanna High
David and Patricia Immen
The Denny Knight Family
Fund of the Princeton Area Community Foundation
Barbara & Chris Maciejewski
Joan and David Martin
Maurice and Rhoda Miller Endowment Fund
New Hampshire Center for Nonprofits
Mark and Susan Primeau
Robert and Margie Sallies
Gil Schohan
Robert and Anne Shaw
Judy and Steve Siegel
David Stamps and Judith Buswell
Bruce and Betsy Thomas
Annie and Chris Weinmann
Mr. & Mrs. Brian Winslow

\$250+

Anonymous
Tom and Patricia Barrick
Linda and John Browne
Bob & Elaine Carangelo
Ken Chapman and Carol Lowden
James and Bonnie Doherty
Graham Edmondson
Jamie Gegerson

Robert and Eileen Gosselin
Don and Lou Ann Harris
Elizabeth Immen
Joseph Kelaghan
Charlotte Lee and Ron Turbayne
Brad and Lynn Leighton
Deborah Leonard Kosits
Kathleen Lyons
Meredith Rotary
Alan and Carol Metevia
Kaitlin O'Neil
Rosemary Pizzuti
Deborah Seid and Tom Green
Edward Sonn and Sharon Forde
The Truesdale Family
Deborah & Paul Walker
Mark and Kathleen Whitehead
Gregg Williams

\$100+

Anonymous
Anonymous
Anonymous
Anonymous
Anonymous
Anonymous
Anonymous
Miriam Adams
Amazon Smile Foundation
Christine and Carlos Anderson
Cecile Andrews
Delaney Andrews and Dawson Ellis
Rick and Rae Andrews
Gail Barrett

Chuck and Sue Bates
David Berard
George Berman
Martin Berman
Craig Betchart
Tony and Terri Bouchard
Steve and Judy Brown
Jay Buckley
Sarah Bunkley and Richard Smith
Alison and Christopher Casko
Jean and Don Clarke
Robert Connors
Abraham and Lynn T. Dadian
Cara David
Constance Dehnel
Alexa Dembiec
Diane G. Dion
Martha Dolben
Ann Donahue
Tami and Mark Donohoe
Carol and Robert Doretti
Denise Doyle
Kim Duncan
Georgene Fabian
Laura Felgate
Andrew Fleischmann
Lisa Furlong
Leo Glasheen
Lynn Goddard
Jean Halfmann
J William Harris
Julie Hart
Mark Johnson
Susan Karsten
Ira and Lynn Keltz
Bernice and Bernie Kramer
Nancy Kubecka
Maureen Kuharic
Peter and Linda L'Ecuyer
Nancy and Newbold LeRoy

Actors' Circle (continued)

Marc and Carroll Levey	William Batchelder	Sara Tirrell
Lisa Lovett	Richard and Rosalie	Margaret Turner
John and Carol Low	Beaulieu	Deborah Vargo
Peter and Maryann Magoun	Andy Bedford	Rafael Vazquez
Bob Maloney and Bonnie Hunt	Karen and Paul Bemis	Lindsay Weiner
Jonathan Marro	Barbara and Charles	Wellesley College Theatre
William and Stefanie Marsh	Birdsey	Tim and Anne Whiting
Dr. Warren & Annette Mason	Suzanne Caroselli	Marjory Wilkinson
Greg & Regis Miller	Judith Clayman	John and Karen Yeigh
Peg and John Mongiello	The Cottages of Wolfeboro	<i>All Other Gifts</i>
Paul Mroczka	Emily Dahl	Anonymous
Dr Noe	Hannah Davidson	Elizabeth Ahl
Margaret and Stephen Ober	David and Sylvia Detscher	Dalia Aleman
Deborah Osborne	Thomas Dixon and	Carolyn Ames
David and Fredda Osman	Annmarie Karayianes	Catherine Asmar
Charlotte Otto	Bob Foster and Mike Gillis	Eileen Bates-Bordies
A Parnes	Elizabeth Geiler	Arnold Benson
Daniel Patterson	Casey and Drew Gerken	Roger and Deborah Blake
Mark Pettie and	Bryan Graf	Roberta Brayer
Sue Molitor	Rebecca Gregoire	Kim Bruneau
Clayton Phillips	Betty Heaney	Elizabeth Bulasko
John and Dorothy Piquado	Andrew Hendrick	Matt, Carey and
Walter and Christine Powers	Nancy Henn	Emma Cahoon
Gail Putnam	Andrea Houghton	Kevin and Mary Ellen
Mike Richardson	Christopher Kiley	Canty
Sharon Richardson	Constance Kuekan	Janice Cardarelli
The Rickenbachs	Eliza J Leadbeater	Nancy Carsen
Mary and Dave Rogers	Jonathan and Glenna Lee	Bill Charles
Joe Sampson	Marilyn Lezberg	Rachel Chiffer
Robert Sawyer	Charlene Malek	Tyler Christie
Melissa Shakun	Jessie Marden	Paul Ciborowski
Chris Slater	Joel Mercier	Gay Daigle
John Soha	Monica Michalsky &	Alexander Davis
Larry Spencer	Tom Stankosky	Beth Day
Thomas Staley	Gerard and Joanne Morin	Judith Dean
Judith Stern	Sean and Helen Murphy	Jack Degange
Samantha Tella	Savannah Muzzey	Gary and Lisa DiMartino
Joyce Tyler	Antoinette Olden	Maryann Dodge
Barbara Ulm	Jeffery & Jayne Peck	Clark Dumont
John and Karen Warren	Andrew Pinard	Jean Etter
Hazel Zimmer	Tracy and Mark Renaud	Darlene Fritz
	Rebecca Rigden	Christina Fuller
		Frank Garcia
	Dennis and Kerry	Virginia Gassman
	Schneider	Sandra Greenberg
	Steven B. Schwartz and	Jennifer A Grunbeck
	Paula A. Leonard-Schwartz	Eric Halvorson
	Robert Sears	Madeline Hanafin
	Jack and Doreen Sheppard	Hannaford Community
	Sally Sibulkin	

\$50+

Anonymous
Donna Acox
Marcy Alkalay
Kay Anderson

Bag Program
 Alison Hildebrand
 Joia Hughes
 Anne Ingard
 Amanda Jennison-Sousa
 JM
 Eliot Johnson
 Chris Jones
 Karen Kharitonov
 Valerie and Karl Kimball
 Daniel Klingenstein
 Cory Lawson
 Nathalie Leclair
 Michelle Levinson
 Denise Livingstone
 Thad Long
 Cassandra Mason
 Deirdre A Meehan
 Michelle Minot
 Suzanne Morrissey
 Junette Pearson
 Penny and Paul
 Michael Portrie
 Alan Provance
 Elizabeth Ricci
 Ulysses Roebuck
 Veronica Rosa
 David and Christine Roy
 Stuart W Russell Jr
 Angela Santamaria
 Janine M. Schifino
 John and Linda Shelley

Jennifer Simon
 Lori Smock-Joyal
 Evan Sohm
 Susan Swain
 Kathleen Sweeney
 Jennifer Szendre
 Allison Szklarz
 Judy Taylor
 Clayton Titus
 Christa Tsechrintis
 Cynthia Unangst
 Marie Valliere
 Valerie Verge
 Patricia Weston
 Amanda Whitworth
 Shelley Wieler
 Lowell Williams
 Pamela Williams
 Lorna Zammatt

*Donation list dated
 7/23/22 - 7/22/23*

**Thank you to the following
 donors who have sponsored
 new chairs for the
 amphitheatre!**

**Barbara and Charles Birdsey
 Eden and Nate Bowditch
 Mike and Lisa Brien
 Steve and Judy Brown
 The Cottages of Wolfeboro
 Alexa Dembiec
 James and Bonnie Doherty
 Ann Donahue
 Kelly Dunn
 Dawson Ellis and
 Delaney Andrews
 Chuck and Diane Fray
 Liz and Bob Gabel
 Richard and Carol Gerken
 Rebecca Gregoire
 James Whittredge Hill
 Charlene Malek
 Jessie Marden
 Sean and Helen Murphy
 Savannah Muzzey
 Kaitlin O'Neil
 Charlotte Otto
 Neil and Lesley Pankhurst
 Carolyn S Scattergood
 Chris Slater
 Ambassador Paul Speltz and
 Renee Speltz
 Monica Michalsky and Tom Stankosky
 Lydia and Nathan Torr
 John and Muff Walker
 Barbara and Gordon Webb
 Mr. & Mrs. Brian Winslow
 John and Karen Yeigh
 Barbara Zeckhausen
 Wellesley College Theatre**

Morgenstern Sustainers

Anonymous
 Anonymous
 John and Linda Browne
 J.W. Hill, Consultant
 Sarah Bunkley and
 Richard Smith

Alison and Christopher Casco
 Katie Guilmett
 Ira and Lynn Keltz
 Susan and Douglas McLane
 Kaitlin O'Neil
 Joe Sampson

Jason and Deanne Sargent
 Mary and Dave Rogers
 Graham and Julia Thomson
 John and Muff Walker
 Barbara and Gordon Webb
 Brian Winslow

These are people who participate in the
 continued success of the Playhouse through their recurring
 gifts, and we are so grateful for the ongoing support.

We appreciate your support!

Did you know that in typical years ticket sales only account for about 50% of what it takes to run the Winnepesaukee Playhouse?

Sadly, these have not been typical years recently. But patrons just like you have been so supportive and generous. No gift to the Playhouse is too small, and every donation helps us keep artists employed and audiences entertained throughout the year. If you would like to become a donor, or make an additional donation, your tax-deductible gift will be instrumental in helping to ensure the Playhouse can continue to provide the level of programming you have come to expect.

You can make a donation today by visiting the box office, calling us at (603) 279-0333, or visiting our website: www.winnepesaukeeplayhouse.org

Is it time to take your involvement to the next level?

- You could make a one-time gift of \$100
- Join the Morgenstern Sustainers with a monthly gift of \$10
- Join our Directors' Circle at \$1,000 a year (\$85/month)

You can be the one to inspire, engage, and entertain the community by making a tax-deductible gift. You can mail us a check, use your credit card online or over the phone, or stop by the box office today.

There are even more creative ways to support the Winnepesaukee Playhouse!

Have you ever considered including the Winnepesaukee Playhouse in your will? A gift through your will or estate plan enables you to support our mission and make a difference in the future of the Winnepesaukee Playhouse. Did you know you can use your IRA required minimum distribution to make a tax-free donation to a non-profit like the Winnepesaukee Playhouse? Questions? Speak with your financial advisor, or contact Thom Beaulieu at 603-279-0333 or thom@winniplayhouse.org.



Logos
Branding
Graphic Design & More

LogoFurther.com

ted@logofurther.com

603.562.6909



JOE WALKER
Marketing Services

"Vision without action is a daydream.
Action without vision is a nightmare."

-Japanese Proverb

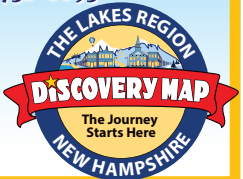
Does your business have vision?

- Strategic business plan development
- Promotional / advertising plans
- Marketing plans
- Non-profit fundraising plans
- Presentations / guest speaking

JoeWalkerMarketing.com
info@joewalkermarketing.com

603-731-0693

Franchisee
Call 603-369-4376
to advertise.



CHRISTOPHER P. WILLIAMS ARCHITECTS, PLLC

PO Box 703 • Meredith, NH 03253 • 603-279-6513
www.cpwarchitects.com



Our award winning firm has provided innovative and environmentally sensitive design solutions since 1984. We specialize in sustainable building practices and offer expertise in incorporating green systems into client projects to enhance and protect the ecosystem, and conserve natural resources. We strive to design buildings that fit into their cultural context and environment.



MIRACLE FARMS

LANDSCAPE CONTRACTORS



Moultonborough, New Hampshire (888)288-8252

Extraordinary landscapes begin here!

- Landscaping
- Maintenance
- Hardscapes
- Mulch/Loam/Compost
- Firewood Dry/Green

603-253-9292

www.miraclefarmslandscaping.com



The Winnepesaukee Playhouse is grateful to the following foundations for their support.



STEINWACHS FAMILY
FOUNDATION



New Hampshire
State Council on the Arts



NEW HAMPSHIRE
CHARITABLE FOUNDATION

The Winnepesaukee Playhouse is supported in part by a grant from the New Hampshire State Council on the Arts & the National Endowment for the Arts.

Our Real Estate Goals are simple....

They're Yours!



Scott Knowles

603.455.7751

scottknowles@metrocast.net

Chris Adams

603.393.7993

adamschris195@gmail.com

Chris Kelly

603.677.2182

chriskelly@baysidenh.net



We have everything you need in real estate

208 Daniel Webster Highway, Meredith, NH 03253

(603) 279-0079

604 Main Street, Laconia, NH 03246

(603) 527-8200

www.baysideplatinumgroup.com





the
WINNIPESAUKEE
playhouse

20th Season Gala

The Winnepesaukee Playhouse
20th Season Gala
Saturday, September 30th, 2023
5:30pm

Join us for dinner and a
performance celebrating
20 years of theatre that
inspires and entertains!

Tickets available at www.winnepesaukeeplayhouse.org

Very Music Very Italian & Very Good!



**Celebrating
34 Years!**

Giuseppe's *Pizzeria & Ristorante*



**This unique and popular restaurant is
one of the Lakes Region's most loved since 1989!**
Serving Award-Winning Gourmet Pizza, Pasta, Seafood,
Steak, Chicken, Veal, Vegetarian, Vegan, Gluten-Free,
Soup, Salads, Desserts, Cappuccino,
Beer, and a fabulous selection of Wine and Spirits!

Lunch and Dinner Daily
Reservations are highly recommended and greatly appreciated!

Located on the corner of Routes 3 & 25
Mill Falls Marketplace, Meredith, NH

**Call (603) 279-3313
For Reservations & Take Out
Visit giuseppesnh.com**



**LAKES REGION
COMPUTER**

**Celebrating 25 Years in Business!
A ONE STOP TECH SHOP**

Apple • PC • Verizon • Repairs
IT Business Services

Visit Our Retail Store!

- Verizon Authorized Retailer
- Apple Premium Service Provider
- Selling Apple, PC, Phones & Accessories
- Phone and Computer Repairs

IT Business Services Include:

- Computer Systems and Network Installations
- Systems Monitoring and Management
- Backup and Disaster Recovery
- Security and Compliance
- Cloud Solutions
- IT Inventory and Planning
- On-Site and Remote Support
- Wireless Network Planning and Installations
- Security Camera Installations
- Nextiva Business Phone Systems

12 Main Street, Center Harbor, NH 03226

Phone: 603.253.9847 • Website: lakesregioncomputer.com

Follow us!  [lakesregioncomputer](https://www.instagram.com/lakesregioncomputer)  [lakesregioncomputer](https://www.facebook.com/lakesregioncomputer)