

# the WINNIPESAUKEE playhouse



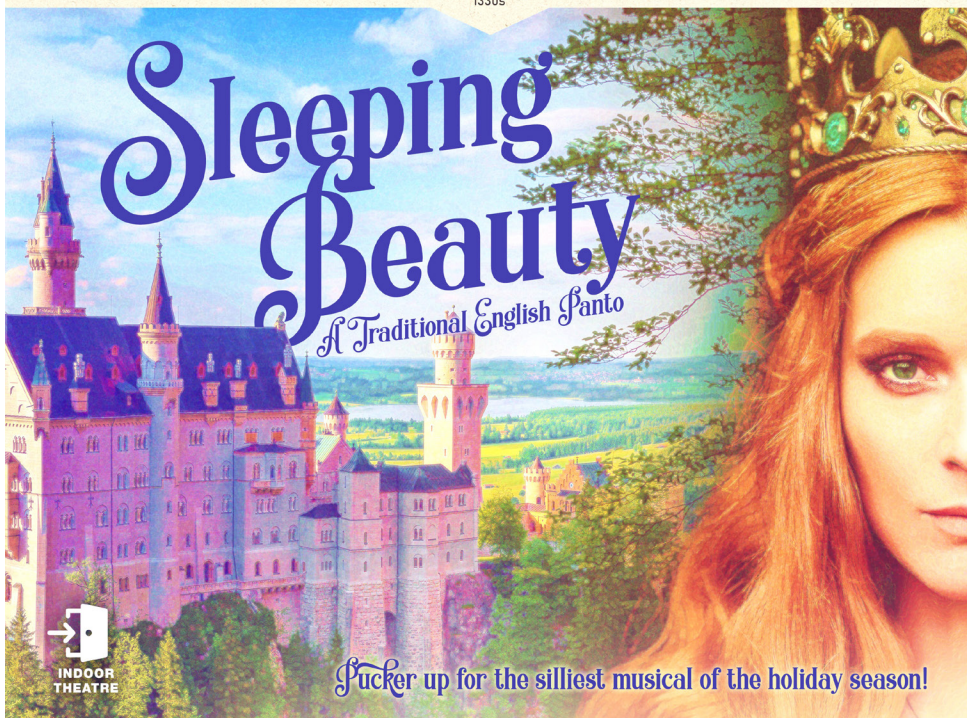
2022 SEASON

Through the Ages

Sleeping Beauty:  
A Traditional English Panto  
1330s

## Sleeping Beauty

A Traditional English Panto



INDOOR  
THEATRE

Pucker up for the silliest musical of the holiday season!

## December 16-31

SPONSOR:



[winnipesaukeeplayhouse.org](http://winnipesaukeeplayhouse.org)

603.279.0333 | 33 Footlight Circle, Meredith NH 03253

**"This world is but a canvas to our imagination." – Henry David Thoreau**



There's no telling where life will take you when you let your imagination soar. We're pleased to support the arts community.



**800.922.6872 [mvsb.com](http://mvsb.com)**

## ***Board Members***

Renee Speltz, Chair  
Retired Mental Health Counselor and  
Consultant

Bill Bald, Vice Chair  
President  
Melcher and Prescott Insurance

Raymond Abramson, CPA, Treasurer  
Owner  
Abramson & Company, LLC

Kaitlin M. O'Neil, Secretary  
Attorney  
Normandin, Cheney & O'Neil, PLLC

## ***Members at Large***

Beth Compson  
Recruiting and Fund Development  
Consultant

Casey Gerken  
Owner  
Innisfree Bookshop

Tiffany Letts  
Director of Resource Development  
Granite United Way

Dr. Ann McClellan  
Professor of English  
Plymouth State University

Neil Pankhurst  
Co-Founder and  
Producing Artistic Director  
The Winnepesaukee Playhouse

Sean C. Sullivan, CPA  
Business Consultant

Julia Thomson  
Legal Consultant

Brian Winslow  
Director of Community Relations  
Granite VNA



Producing Artistic Director.....Neil Pankhurst  
Patron & Company Services Director.....Lesley Pankhurst  
Director of Education.....Timothy L'Ecuyer  
Director of Finance & Fundraising.....Thom Beaulieu  
Technical Director.....Matthew Hutchens  
Assistant Technical Director.....RJ Bogues  
Office Administrator.....Donna Findlay

*Proud Members of*

NEW HAMPSHIRE

**PROFESSIONAL THEATRE**

ASSOCIATION

WWW.NHPTA.ORG INFO@NHPTA.ORG

The Winnepesaukee Playhouse  
33 Footlight Circle, Meredith NH 03253  
Tel. (603) 279-0333

**[www.winnepesaukeeplayhouse.org](http://www.winnepesaukeeplayhouse.org)**



# FOR YOUR INFORMATION

**Please** turn your cell phone and any other electronic devices completely off. Leaving them on silent or vibrate may interfere with our communication systems and interrupt the flow of the performance.

**Please** refrain from photography or recordings of any kind, as this violates our royalty agreements.

**Please** note that if you must, in an emergency, use the restrooms during the performance, our House Manager will return you to your seat at an appropriate break in the performance.

**Please** be sure you can hear us! For our theatre patrons who have experienced varying degrees of hearing impairment, please take advantage of our state-of-the-art **Assisted Listening System**.

*For indoor performances:* If you are a hearing aid user who has a tele-coil function in your hearing aid you will be able to access our system directly after turning on that function. You may need to contact your hearing aid provider to inquire about the tele-coil in your particular hearing aid and ensure that it has been activated and instructed on how to turn it on when you are in the theatre. For patrons without tele-coil hearing aids, we have a limited number of headsets available on a first-come, first-served basis. Please see the box office if you would like to use one.

The indoor Assisted Listening System is made possible by a generous donation from The Maurice and Rhoda Miller Endowment Fund.

*For outdoor performances:* All actors will be amplified. If you'd like further amplification, headsets are available on a first-come, first-served basis from our reception table.

**Please** keep in touch! Visit our website at [www.winnipесаaukeeplayhouse.org](http://www.winnipесаaukeeplayhouse.org) to join our email list. You can also follow us on Facebook, Instagram, and Twitter.



## Dear Friends:

Here we are at the end of our 2022 “Through the Ages” season!

As we look forward to our 20th Anniversary Season in 2023 I am writing with very mixed emotions to let you know that this momentous achievement will occur with my guidance and planning, but without my direct involvement, as I have decided to step down as Producing Artistic Director of the Playhouse following the closing performance of this season’s panto, *Sleeping Beauty*.



I am incredibly proud of our achievements over the past 20 years. From a tiny storefront in Weirs Beach, through the opening of our beautiful theatre campus in Meredith, to navigating a global pandemic, the Playhouse continues to flourish.

The reasons I have chosen to step down at this point are very personal and have to do with my mother, who needs more support than I can currently give her from afar, and my own health. As those close to me know, the surgery I underwent ten years ago for colorectal cancer saved my life but fundamentally changed the functioning of my body in ways that affect me every single day. While my cancer has thankfully not returned, I am finding it more and more difficult, as I approach my upper 50s, to cope with the strain my condition puts on my body daily. I urge you to stay up-to-date with your healthcare and get a colonoscopy, and other cancer screenings, as recommended by your doctor!

In light of my departure, Thom Beaulieu, who was instrumental in helping me steer our ship financially during the pandemic has been appointed Managing Director. He will take over the leadership of the organization alongside Timothy L’Ecuyer, currently our Director of Education, who has been appointed Artistic Director by the board of trustees. I am excited to hand the baton over to him. I am thrilled that these two great friends of mine will continue my legacy while making the Playhouse their own, alongside my wife, Lesley, who will continue in her role as Patron and Company Services Director.

With their blessing, the Playhouse’s 2023 season will be the final slate of professional productions chosen by me and I will be announcing those titles to you, along with our community and education department productions, in mid-December. Tim, Thom, and Lesley have already expressed that they would like to continue the Playhouse’s tradition of staging a Traditional English Panto each holiday season and have provided me an open invitation to keep writing and directing them if I desire. So I have a date to see you in December of 2023, if not before. When you attend *Sleeping Beauty* this holiday season, you’ll still find me at the sound board so please stop by and say hello. Who knows, you may still find me waving the orange flag in the parking lot this summer. To quote *Peter and the Starcatcher*, one of the most favorite shows I directed for you, this isn’t goodbye, it’s “TTFN” – ta-ta for now!

--Neil Pankhurst



HOME  
COMFORT  
design & furnish

Interior Design • Project Management  
Kitchen & Bath • Unique Showroom

603-253-6660  
[homecomfortnh.com](http://homecomfortnh.com)

DRIVEWAYS • WALKWAYS  
PARKING LOTS • ROADS



603-279-1499  
[www.bryantpaving.com](http://www.bryantpaving.com)



Innisfree Bookshop

BOOKS GIFTS CARDS since 1992  
[www.innisfreebookshop.com](http://www.innisfreebookshop.com)

312 DANIEL WEBSTER HIGHWAY MEREDITH, NH 603-279-3905

**KATHLEEN E. SWEENEY**

CERTIFIED PUBLIC ACCOUNTANT

P.O. Box 1259  
Center Harbor, NH 03226  
(603) 253-4011  
Fax (603) 253-4051

P.O. Box 1187  
North Conway, NH 03860  
(603) 356-7036  
Fax (603) 733-5250

[ksweeney@metrocast.net](mailto:ksweeney@metrocast.net)  
[www.kathleensweeneycpa.com](http://www.kathleensweeneycpa.com)

Thank you for voting us best in the lakes region



Dependable and timely Oil, Diesel and Propane deliveries from Loudon to Lincoln and Alexandria to Alton  
Full Emergency and Installation services

Family Owned & Operated Since 1946 • (603) 524-1417 • [www.foleyoilco.com](http://www.foleyoilco.com)

CELEBRATING  
**75** YEARS  
1946-2021

Heating Oils  
Propane  
Diesel  
24-Hour Emergency Service  
Boiler Installations  
Preventive Maintenance

*Mello  
Moose*  
**COFFEE HOUSE**

136 Daniel Webster Hwy, Meredith  
(603) 677-7037

Great coffee, breakfast sandwiches,  
and fresh baked goods to start  
your day!

  
**TWIN BARN'S**  
BREWING CO.

194 Daniel Webster Hwy  
Meredith



**Bring Ticket Stub To  
Twin Barns for 50%  
off apps**



**Temple B'nai Israel**

210 Court Street  
Laconia, NH 03246

[www.tbinh.org](http://www.tbinh.org)



**THE  
New Hampshire  
JEWISH  
FOOD  
Festival**

Temple B'nai Israel  
The Lakes Region  
BUSINESS DIRECTORY

*We are thrilled to support  
The Winnepesaukee Playhouse*

*Prescott*  *Farm*  
Environmental Education Center



*After the play—  
we'll help you find ways to play  
outside!*



928 White Oaks Road, Laconia  
603.366.5695 [prescottfarm.org](http://prescottfarm.org)

**Before the Play  
enjoy dinner at**



or

  
STEAKS & SEAFOOD

253-4762  
Center Harbor

524-9373  
Lakeport

[www.magicfoodsrestaurantgroup.com](http://www.magicfoodsrestaurantgroup.com)



# Supporting the Arts **LAURA and GARY STEPHAN**

*In loving memory of*  
**Dorothy Marie Schrader**  
**Gerald Lewis Schrader**



## Attract the brightest & the best

Our **NEW recruiting guide** will help you find the best candidates for your business.



laconiadailysun.com • 603-737-2020



**Lakes Region  
FENCE**

**Residential Fencing Specialists**  
FULLY INSURED



Proudly  
Supporting  
The  
Winnepesaukee  
Playhouse

**SINCE 2005**

www.LRFence.com

25 Country Club Rd  
Suite 606  
Gilford, NH 03249

Call Us for a Free  
Estimate!  
603.524.6061

## **BRAVO WINNI PLAYHOUSE!**

**Patrick's**  
IRISH ROOTS - AMERICAN SPIRIT

patrickspub.com • 603) 293-0841

18 Weirs Rd Gilford, NH

**HART'S**  
TURKEY FARM  
**Restaurant**



233 Daniel Webster Hwy  
Meredith, NH 03253  
603-279-6212

hartsturkeyfarm.com

Regular  
Children &  
Mini  
Menus  
Available  
Gift Shop  
Catering

**IRWIN**  
AUTOMOTIVE GROUP

603-524-4922 | irwinzone.com

*Serving New Hampshire Since 1951*

59 Bisson Avenue Laconia, NH

446 Union Avenue Laconia, NH



# 2023 SHOW LISTINGS

**P** – The Winnepesaukee Playhouse  
Professional Company

**E** – The Winnepesaukee Playhouse  
Education Department

**C** – The Winni Players Community Theatre

**S** – Special Event

## CHARLOTTE'S WEB

**March 24-26**

**E**

Adapted by Joseph Robinette, Based on the book by E.B. White

*Radiant! Terrific! Some pig!*

All your favorite characters from E.B. White's classic children's novel come to life on the stage as Wilbur, a runt of a pig, ends up under the protection of an extraordinary spider, Charlotte. Charlotte saves Wilbur's bacon with the magical words she weaves in the web while teaching him the true meaning of friendship.

## TWELFTH NIGHT

**April 14-16**

**E**

By William Shakespeare

*If music be the food of love, play on!*

A shipwreck. Separated Twins. Mistaken Identity. Unrequited Love. Lost in an unfamiliar land, quick-witted Viola disguises herself as a man and finds herself in the middle of an explosive love triangle in one of Shakespeare's most beloved romantic comedies.

## KEN LUDWIG'S LEND ME A TENOR

**April 27-30**

**C**

*A screwball comedy from the master of farce!*

When a world-renowned opera star ends up passed out in a hotel room before he is due on stage, a lowly office assistant is persuaded to don his costume and go on in his place. But when our star revives, hilarity ensues. Mix two tenors in two identical costumes with a singing bellhop and a seductive soprano, and you get chaos of operatic proportions.

# MAMMA MIA!

**June 15-July 8**

Music and Lyrics by Benny Andersson and Björn Ulvaeus

And some songs with Stig Anderson

Book by Catherine Johnson, Originally Conceived by Judy Craymer

**P**

*The global smash-hit musical returns to the Playhouse!*

Over 54 million people all around the world have fallen in love with the characters, the story and the music that make *Mamma Mia!* the ultimate feel-good show! A mother. A daughter. Three possible dads. And a trip down the aisle you'll never forget!

# SHOUT! THE MOD MUSICAL!

**July 12-22**

Created by Phillip George & David Lownstein

**P**

*The music, the fashion, and the freedom of the swinging 60s!*

This smashing revue tracks five groovy gals as they come of age during those liberating days that made England swing! Join this fast-paced journey through infectious and soulful pop anthems and ballads like "To Sir With Love," "Downtown," "You Don't Have to Say You Love Me," "Son of A Preacher Man," and "Goldfinger." Groovy, baby!

# AGATHA CHRISTIE'S MURDER ON THE OREINT EXPRESS

**July 27-August 12**

Adapted by Ken Ludwig

**P**

*All aboard for a trip you'll never forget!*

Just after midnight, a snowdrift stops the Orient Express in its tracks. The luxurious train is surprisingly full for the time of the year, but by the morning there is one fewer passenger. An American tycoon lies dead in his compartment, stabbed eight times, his door locked from the inside. Isolated and with a killer in their midst, the passengers rely on detective Hercule Poirot to identify the murderer – in case they decide to strike again.



## DRIVING MISS DAISY

**August 16-26**

By Alfred Uhry

**P**

*An open road of possibility*

Uhry's portrait of an aging Southern woman and the Black man hired to be her driver. What starts out as indifference and disdain soon turns into a relationship of mutual trust and compatibility as they break down each other's defenses and come to realize that friendship comes in all different packages.

## SWEENEY TODD, THE DEMON BARBER OF FLEET STREET

**August 31-September 9**

Music and Lyrics by Stephen Sondheim

Book by Hugh Wheeler

From an adaptation by Christopher Bond

**P**

*A deliciously gruesome musical!*

Attend the tale of the vengeful barber and the scheming pie shop owner who have been haunting the stage since the show's legendary Broadway debut in 1979. *Sweeney Todd* is a tale of love, lust, revenge, and murder set amongst the smog of Victorian England. One of the most deliciously inventive scores of all time, it will leave you hungry for more!

## THE GLASS MENAGERIE

**September 14-24**

By Tennessee Williams

**P**

*"In memory, everything seems to happen to music."*

One of the enduring classics of the 20th century, *The Glass Menagerie* is a semi-autobiographical play from one of this country's most beloved playwrights. This memory play is a portrait of a young man attempting to understand the difficult mother and delicate sister who tether him to home. A powerful and haunting piece of theatre.

# CORDUROY

**October 20-29**

Based on the books by Don Freeman

Adapted for the stage by Barry Kornhauser

**P**

*"I like you the way you are."*

When the lights are dimmed and the doors are locked, a department store comes to life. Corduroy, the stuffed bear with the green overalls, must outsmart the Night Watchman as he waits for his human friend, Lisa, to return. With his missing button, Corduroy may not be perfect, but Lisa proves that sometimes all you need is a friend.

# FIDDLER ON THE ROOF

**November 8-12**

Book by Joseph Stein

Music by Jerry Bock

Lyrics by Sheldon Harnick

**E C**

*To Life!*

One of the most popular musicals of the 20th century, *Fiddler on the Roof* is the Tony Award-winning sensation that introduced the world to favorite songs like "Tradition!", "Sunrise, Sunset," and "If I Were a Rich Man." Milkman Tevye's world is turned upside down by both the changing political landscape in his home country, and the changing ideals of a younger generation. Set in the area now called Ukraine, today this nearly 60 year old musical reverberates in a newly relevant way.

# MIRACLE ON 34TH STREET: A LIVE RADIO PLAY

**November 30-December 3**

Lux Radio Script Adapted by Liz Zazzi

**C**

*A holiday classic!*

The Winni Players' annual live radio drama is back! When a department store Santa claims he's the real Kris Kringle, his case gets taken all the way to the Supreme Court. A little girl's belief makes the difference in the 'miracle.' With live Foley effects and a host of on-air personalities, the annual radio play is a yearly highlight!

# CINDERELLA: A TRADITIONAL ENGLISH PANTO

**December 15-31**

By Neil Pankhurst

**P**

*Don't let the clock run out before you see the biggest panto of them all!*

Your favorite family holiday event is back! Filled with bright lights, big costumes, dynamic dancing, and a double entendre or two (or three!), our annual English Panto is a treat for ages 3 to 103! "Boo" the villain, "cheer" the hero and join us for an English tradition that has been a holiday staple since the nineteenth century! We're proud to bring a little *old* England to *New* England!



Health Club

CONVENIENTLY LOCATED IN MEREDITH & MOULTONBOROUGH

***JOIN THE FUN TODAY!***

**603-279-0411**

[www.thefitnessedgenh.com](http://www.thefitnessedgenh.com)

ALL MEMBERSHIPS INCLUDE GROUP FITNESS CLASSES LIVE OR ZOOM:  
YOGA, POSTURE, ZUMBA, STRENGTH, CYCLING & MORE

**Interlakes**  
**FAMILY DENTAL**

Celebrating 30 years of  
excellence!



[interlakesdental.com](http://interlakesdental.com)

**603-253-4363**

60 Whittier Highway, Suite 1  
Moultonborough, NH

**GREAT  
PERFORMANCES  
HAPPEN HERE**



Franklin Savings Bank is proud to partner with Winnepesaukee Playhouse to provide another season of amazing performances. Sit back and enjoy the show!



FSBNH.BANK





LITTLE DOG  
*paper co.*

**GREETING CARDS  
GIFTS  
GAMES  
HOME GOODS  
GIFT WRAP  
DESIGN SERVICES**

30 MAIN STREET  
MEREDITH, NH 03253

(603) 677-7003

HELLO@LITTLEDOGPAPERCO.COM



**BREATHE. HEAL. RISE.**

**Massage  
Yoga  
Pilates  
Reiki**

We integrate yoga  
with clinical massage  
therapy to help you  
achieve maximum  
therapeutic benefits

31-A Main Street  
Meredith, NH 03253

(603) 716-7240

HEALING-BEGINS.COM



**GOLDEN VIEW**  
HEALTH CARE CENTER  
*A Non-Profit Community*

## *The Retreat at Golden View*

Short-stay rehab conveniently located in the Lakes Region



You have a choice! Golden View works with hospitals throughout New England, so no matter where your hospital stay may be, you can recover close to home!

The Retreat features private suites with private bathrooms, as well as a tailored therapy plan. We are contracted with many private insurances and Medicare.

To learn more or prebook your stay, please call our admissions department at 279-8111.

**Assisted Living • Long-Term Living • Short-Stay Rehab**

**Meredith, NH • 279-8111 • [www.GoldenView.org](http://www.GoldenView.org) •**





*Serving Businesses & Individuals For Over 35 Years*

**Three Convenient Locations**

501 Union Avenue, Laconia	603-528-2241
64 Franklin Street, Franklin	603-934-2942
9 West Street, Lincoln	603-745-3121

**[www.mdccpas.com](http://www.mdccpas.com)**

*Member AICPA, Private Companies Practice Section, NH Society of CPAs*

*Dream it. Achieve it.*



**Bank of  
New Hampshire**

Member FDIC

**PROUDLY SUPPORTING THE  
WINNIPESAUKEE  
PLAYHOUSE**

1.800.832.0912

[BankNH.com](http://BankNH.com)

*the*  
**WINNIPESAUKEE**  
*playhouse*

**FOLLOW US ON**



**#HappyUp at The Studio!**

Experience the Lakes Region's most joyful and  
eclectic shopping experience for yourself!



598 Main Street, Laconia, NH  
603-524-8008 • [thestudionh.com](http://thestudionh.com)



**FIRESIDE INN  
& SUITES**

*Lake Winnepesaukee*

*Year Round Comfort - Grab & Go Breakfast  
Indoor Pool & Hot Tub - Outdoor Pool seasonal*

**ENJOY the Show!!**

**603.293.7526 / [Firesideinnngilford.com](http://Firesideinnngilford.com)**



# GERMAN MOTORSPORTS

AUDI • VOLKSWAGEN • BMW • MERCEDES • MINI



Authorized BOSCH Service Center

(603) 524-5016

[www.germanmotorsportsusa.com](http://www.germanmotorsportsusa.com)



**Gilford Home Center**  
A SMALLER BOX WITH A BIGGER VALUE

[gilfordhomecenter.com](http://gilfordhomecenter.com)

603-524-1692

Hours, Mon. - Fri. 7:00 - 5:00

Sat. 8:00 - 3:00

Sun. 9:00 - 1:00



Mon.-Fri. 7:30-5:00, Sat. 7:30-3:00  
and Sun. 7:30-1:00

[gilfordtruevalue.com](http://gilfordtruevalue.com)  
603-524-5366



**LOVERING  
AUTO GROUP**

Meredith



4.9

**Misiaszek  
Turpin  
pllc**  
Architecture  
Planning

*Proud to support:*

*The  
Winnepesaukee  
Playhouse*

Laconia, New Hampshire  
603.527.1617  
[misiaszekturpin.com](http://misiaszekturpin.com)





## Melcher & Prescott INSURANCE

KNOWLEDGE. TRUST. CONFIDENCE.



CO-OPERATIVE  
INSURANCE  
COMPANIES

Since 1862 Melcher & Prescott Insurance has been a proud sponsor of the arts and culture in our community.

Our local professional staff are here to assist you with all your insurance needs including homeowners, automobile, watercraft, business and employee benefits.

*We work closely with our clients to secure the proper coverage at the best price!*

[www.melcher-prescott.com](http://www.melcher-prescott.com) | [insure@melcher-prescott.com](mailto:insure@melcher-prescott.com) | 603-524-4535







hannaford.com

# grand finale

we know  
you love  
sweet endings



An active community of friends  
is waiting for you at Taylor.

Start your next chapter today!

Laconia

Wolfeboro

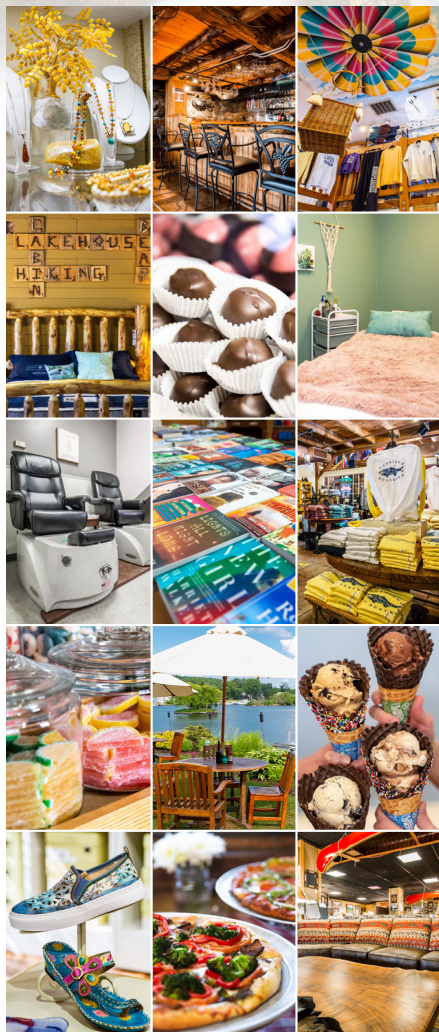
435 Union Avenue, Laconia NH 03246

83 Rolling Wood Drive, Wolfeboro NH 0389



(603) 366-1400 / [taylorcommunity.org](http://taylorcommunity.org)

SHOP. DINE. EXPLORE.



*Lakes Region's Premier Shopping Destination*

Unique Marketplace Shops

5 Distinctive Restaurants • 4 Inns

Boardwalk, Park & Sculpture Walk

Friday Night Music - July & August

[millfalls.com/shop](http://millfalls.com/shop) • Routes 3 & 25 Meredith, NH

The Winnepesaukee Playhouse Presents

**Sleeping Beauty: A Traditional English Panto**

By Neil Pankhurst

The Production Team

Director.....	Neil Pankhurst
Music Director.....	Judy Hayward
Choreographer.....	Nicole Sullivan
Stage Manager.....	Megan Franco
Costume Designer.....	DW
Lighting Designer.....	Thom Beaulieu
Sound Designer.....	Neil Pankhurst
Scenic Designer.....	Neil Pankhurst
Original Scenic Elements Created by.....	Andrew Stuart
Costume Assistant/Wardrobe Supervisor.....	Hannah Beecher
Props Supervisors.....	Donna Findlay Lesley Pankhurst

Note: This production contains strobe-like effects and  
non-allergenic, water-based smoke and haze.



# The Cast

In order of appearance

Storyteller.....	Sophie Pankhurst
King Bumble.....	Jim Rogato
Queen Bee.....	Victoria Preisman
Chester Drawers.....	Robert Hooghkirk
Nanny Fanny.....	Jordan Ari Gross
Fairy Nuff.....	Celeste Vandermillen
Carabosse.....	Melody Munitz
Herman the Henchman.....	Miles Sargent
Aurora/Briar Rose.....	Teghan Marie Kelly
Prince Philip.....	Molly Chiffer

## Dance Ensemble

Fairy Lights.....	Ruby Walker
Fairy Cakes.....	Nicole Sullivan
Fairy Tale.....	Natasha Kharitonov
Fairy Garden.....	Meredith Gerken

Thank you to:

Meredith C. Brown, The Costume Studio,  
Graham Edmondson, John Findlay, Eliza Leadbeater,  
New Hampton School, Mallory Rinker,  
Seacoast Repertory Theatre,  
and to Sophie Pankhurst for arranging and orchestrating  
*Happy Birthday Sweet Sixteen/Sweet Sixteen*



# *Sleeping Beauty*

- Sc. 1 - *The Palace Throne Room in Alconia, a long time ago*  
Good Morning.....The Company
- Sc. 2 - *The Enchanted Forest*  
The Happy Wanderer.....Nanny Fanny  
The Sugar Plum Fairy.....Dance Ensemble
- Sc. 3 - *The Palace Throne Room, the next day*  
On a Wonderful Day Like Today.....Chester
- Sc. 4 - *The Village, 15 years and 363 days later*  
Happy Birthday Sweet Sixteen/Sweet Sixteen.....Aurora and  
Nanny  
I Think I Love You.....Aurora and Philip
- Sc. 5 - *Carabosse's Lair*  
Trouble.....Carabosse
- Sc. 6 - *Back in the Village*  
Shake It Off.....Nanny
- Sc. 7 - *The Palace Throne Room, the next day*
- Sc. 8 - *The Topmost Turret*

--15 Minute Intermission--

- Sc. 1 - *A Corridor in the Palace, 20 minutes later*
- Sc. 2 - *The Throne Room*  
All You Have To Do Is Dream.....Aurora and Philip
- Sc. 3 - *The Enchanted Forest*  
Lips Are Moving.....Nanny Fanny and Chester
- Sc. 4 - *Another Part of the Forest, covered in thorns*
- Sc. 5 - *The Palace*  
Rude.....Philip  
Beautiful Dreamer.....Philip and Queen Bee  
Levitating.....Aurora and Philip
- Sc. 6 - *Another Part of the Palace*  
Jingle Bells.....Chester
- Sc. 7 - *The Wedding Finale*  
Wake Me Up Before You Go Go.....The Company

# FROM THE WINNIPESAUKEE PLAYHOUSE EDUCATION DEPARTMENT...

## The Top Five Things YOU Should Know About Being in the Audience at a Pantomime...

Pantomime performances like the Winnepesaukee Playhouse's *Sleeping Beauty* are often thought of as being "very British," despite having spread to a number of other regions such as Australia, South Africa, Canada, and the United States. While it IS true that pantomime is most popular around the holidays in England, AND that most notable panto performers are British, AND EVEN that some individuals refer to this type of theatre as "British Pantomime," one of the most enjoyable parts about a panto performance is how much it is a mish-mash of many different things. Pantomime's origins are varied and its modern influences are changing all the time, so one production is never exactly like another. That said, here are (with a David Letterman style drum roll) the top five things YOU should know about being in the audience at a pantomime:

1. **You Will Recognize the Story!** Pantomime draws from well-known fables and fairy tales including *The Little Mermaid*, *Sleeping Beauty*, *Aladdin*, and *Cinderella* — coming to the Playhouse stage in December 2023! Its stories are about good versus evil and love triumphant winning out over all odds—topics that are obviously still very popular in all types of storytelling today.
2. **You Will Recognize the Characters!** One of panto's most direct ancestors is the fast-paced slapstick Italian *Commedia dell'arte*, which was most known for its easily recognizable stock characters: young and innocent lovers, scheming servants, doddering professors. *Commedia* has had a recognizable influence on pantomime as well as contemporary movies, TV shows, cartoons, etc. Think about stock characters you might know from sitcoms: the dumb but loveable husband with the all knowing wife who holds the family together for him and their wisecracking kids.
3. **You Will Recognize the Music!** Another of panto's influences is England's Victorian Music Halls (similar to American Vaudeville) that featured a "variety show" of musical numbers, comedy acts, and novelty performers. This tradition is echoed in contemporary TV shows like Britain/America's Got Talent. Just as was done in Music Halls, Vaudeville, and as is done now for the entertainment of celebrity judges on network television, modern pantos always incorporate older familiar musical numbers (and parodies of them) as well as pop songs (and parodies of them).

4. **You May Recognize the Chorus!** Pantomime often features a chorus of young dancers and singers, sometimes called “the babes.” In Victorian times, these performers often came from very poor backgrounds and were frequently the family’s only breadwinners. The young chorus members in the Playhouse’s panto are local dancers!

5. **You Will NOT Recognize That... Man? Woman!?** One of the best known pantomime traditions is the blurring of gender. The casting of a woman in the role of “the principal boy” is an idea with a direct connection to Victorian times and a custom called “breeches roles.” It usually involved a woman playing a boy wearing pants (breeches). In a society where furniture legs were sometimes thought too risqué and had to be covered with skirts and where women’s fashion included layers and layers of fabric, a woman playing a man caused a much bigger reaction than a man playing a woman when the audience could (gasp!) see the shape of her legs! The “pantomime dame,” on the other hand is a tradition that connects back to Medieval and Shakespearean theatre where women’s roles were played by men. This was originally done for decency sake, but the Music Halls adopted this tradition, as panto has, partly to poke fun at women’s fashion. We still see it today, too. Think about Edna Turnblad in *Hairspray* or Agatha Trunchbull in *Matilda the Musical*. Widow Twankey, for example, has become a popular panto stock character. In a recent interview, Ian McKellan (Gandalf, Magneto) said that the Widow has been one of his favorite roles to play.

Timothy L’Ecuyer  
Director of Education

Source:

“The Magic of Pantomime.” ITS BEHIND YOU DOT COM. Web. 14 Dec. 2014. <<http://www.its-behind-you.com>>. Website.

We are delighted to thank the  
Steinwachs Family Foundation  
for sponsoring our student matinee on  
Monday, December 19th in memory of Derek Marshall,  
who hailed from England and was a lover of pantos.

## CAST AND PRODUCTION TEAM

**Hannah Beecher** (Costume Assistant/Wardrobe Supervisor) graduated from Messiah University with a BA in Theatre focusing on a double emphasis in Tech/Design and Directing. She has spent the last several years working on various productions as a costumer, stage manager and director. Hannah has done two internships with the Riverbank theatre working as a costumer, set painter, stage manager, and camp instructor for some of their productions. She enjoys working with young performers and helping them grow into strong confident individuals. Recent credits include costuming and stage managing *The Christmas Schooner*, and costuming *Nunsense the Second Coming*, *Moana Jr.*, *Ruthless*, *Driving Miss Daisy*, and *Grease*.



**Molly Chiffer** (Prince Philip) (she/her) is thoroughly thrilled to be back at the Winnepesaukee Playhouse after joining the cast of *Lionel Bart's Oliver!* this summer! Select past credits: *Chasing Andy Warhol* with Bated Breath Theatre Co and her first short film, *Kissing Kerouac*. Immense gratitude to Lesley and Neil. Merry Happy Holidays, Everyone!

**Megan Franco** (Stage Manager) is very excited to be joining the Winnepesaukee Playhouse for this holiday season! She is currently a senior studying theatre arts and psychology at the University of Pittsburgh in Pittsburgh, Pennsylvania. Previous credits at Pitt include *Dance Nation* (stage manager) and *Mamma Mia!* (stage manager). This past summer, Megan was the assistant stage manager with Jean's Playhouse in Lincoln, New Hampshire and Resonance Works in Pittsburgh, Pennsylvania. This spring, you can catch her stage managing *Abduction: A New Musical Comedy*.



**Meredith Gerken** (Fairy Garden) is a fifteen year old dancer and a sophomore in high school. She dances at The Studio At Meredith Bay. She takes foundations of dance, street jazz, tap, ballet, pointe, modern/contemporary, musical theatre, break-dancing, and jazz/lyrical. She's been in a couple small plays including school plays and *Really Rosie* at the Inter-Lakes Summer Theatre. This is her twelfth year dancing. She loves to dance, spend time with her family and friends, play with her pets, and swim. She's very grateful for the opportunity to

be in this year's pantol!!



**Jordan Ari Gross** (Nanny Fanny) Winnepesaukee debut! Regional: *Violet*, *Lucky Stiff*, *Joseph... Dreamcoat*, *Kimberly Akimbo*, and *All Shook Up*. Graduate of Emerson College. Love to his amazing supportive family in New York. @JordanAriGross

## CAST AND PRODUCTION TEAM

**Judy Hayward** (Music Director) holds a BFA in Piano Performance and a Master's degree in Arts Administration. She has music directed for numerous theaters, both professional and community, from coast to coast. In the Northeast, Judy has music directed for Winnepesaukee Playhouse, Seacoast Rep, StageCoach Productions, Actorsingers, Stoneham Theater (MA), among others. Judy received the NH Theatre Award for music direction for Winnepesaukee Playhouse's productions of *The Fantasticks!* and *Chicago*. In addition, she was music director for their productions of *Jesus Christ Superstar*, *25th Annual Putnum County Spelling Bee*, *Joseph...Dreamcoat*, *Godspell*, *Peter and the Starcatcher*, *Cabaret*, *High Society*, *Aida*, *Carrie*, *Urinetown*, and the holiday Pantos.



**Robert Hooghkirk** (Chester Drawers) is delighted to be returning to the Winnepesaukee Playhouse after performing in *Lionel Bart's Oliver!* and *Robin Hood* this summer. Recently, he joined the national tour of *SPAMILTON: An American Parody* as King George III and worked on the U.S. Premiere of *300 el x 50 el x 30 el* with Belgium company FC Bergman at The Brooklyn Academy of Music. Favorite Credits include: *The Golden Girls Musical Parody: Pride Edition* (Dorothy Zbornak), *The Ninth Guest* (Peter Daly). He has worked with Disney Cruise Lines, The Link Theatre, Lexington Children's Theatre, and Chamber Theatre of Boston. TV Pilot: *A Class Act* (Randy) with Morbid Little Girl Productions. Thanks to all the artists on and off stage! Insta: @robert.hooghkirk



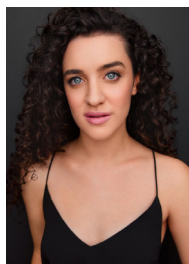
**Teghan Marie Kelly** (Aurora) is overjoyed to be back at the Winnepesaukee Playhouse. You may have seen her joyously singing ABBA as Sophie in *Mamma Mia!*; attempting to make loon calls as Sarah in *No Wake*; waltzing around in a giant yellow dress as Belle in *Beauty and the Beast*; or spreading Christmas cheer in the Holiday Concert *Teghan Marie Kelly and Friends*. Teghan has always felt such love when coming back to this Playhouse. Amidst the pandemic Teghan left NYC and moved back to the Lakes Region....As she prepares to jump back into this big world she can think of no better way to celebrate than to bring joy and laughter to audiences, from this stage, once again. Teghan would like to thank the Playhouse Team for the light and love that they bring to this community. She would like to send the warmest of wishes to Neil as he begins his new journey, cheers! Most importantly she would like to thank her family and dearest friends, for without their unconditional love and support she would be nothing! "If you're brave enough to say goodbye, life will reward you with a new hello." - Paulo Coelho



**Natasha Kharitonov** (Fairytale) is a freshman at Prospect Mountain High School. She has enjoyed participating in childrens' theatre since a young age. Her favorite past role was the Snail in *A Year With Frog And Toad*. Natasha attended and enjoyed Winnepesaukee Playhouse's Upper Camp for two years. During the summer of 2022, she was part of the ensemble in Winnepesaukee Playhouse's professional production of *Lionel Bart's Oliver!* She has taken a wide range of dance classes for 11 years at Alton Dance Academy and plans to continue dancing throughout high school.



## CAST AND PRODUCTION TEAM



**Melody Munitz** (Carabosse) is thrilled to be joining the Winnepesaukee Playhouse for the first time (and donning some evil horns)! Off-Broadway/NYC credits include: *Head and Heart* (Signature Theater), *A Little Princess* (Signature Theater), *Hatch* (Theatre Row), *30 Million* (Theatre Row), *Dream Street* (Pearl Theatre), and various concert performances at Lincoln Center, Carnegie Hall, and 54 Below. Other favorite (but less wonderfully wicked) credits include: Belle (*Beauty and the Beast*), Cinderella (*Into The Woods*), Fiona (*Brigadoon*), Maggie (*A Chorus Line*), and Luisa (*The Fantasticks*). Penn State BFA Musical Theatre '22. [www.melodymunitz.com](http://www.melodymunitz.com) @melody\_munitz



**Sophie Pankhurst** (Storyteller) is a first year music industry major at Northeastern University. With this production of *Sleeping Beauty*, she officially becomes the only performer to appear in every panto at the Winnepesaukee Playhouse! She thanks her dad for sneaking her into rehearsals around classes and finals. Favorite past roles include Bird Girl in *Seussical the Musical* (NUStage Musical Theatre Co.), Audrey in *Little Shop of Horrors* and Molly Aster in *Peter and the Starcatcher* (New Hampton School), and Little Becky Two Shoes in *Urinetown*, Roger in *Lord of the Flies*, and Dinah Lord in *High Society* (Winnepesaukee Playhouse).



**Victoria Preisman** (Queen Bee) is so excited to be back at the Winnepesaukee Playhouse! Victoria has previously been seen as Catherine in *It Had To Be You* (2021) and Camembert in *Beauty and The Beast: A Traditional English Panto* (2019). Favorite regional credits include: *The Full Monty*, *Jersey Boys*, *Cry-Baby*, *The Rocky Horror Show*, and *Tuck Everlasting*. Victoria also has a BFA in Drama from NYU/Tisch School of the Arts. Victoria would like to thank her Dad, Mom, Jules, Martin, and the rest of her friends/family for their constant love and support! [victoriapreisman.com](http://victoriapreisman.com)



**Jim Rogato** (King Bumble) is extremely happy to be involved once again with the tradition of a Panto during the Christmas season at the Playhouse. You may have seen or heard him in one or more of the many Winnepesaukee Playhouse productions over the years. First cast as John Proctor in *The Crucible*, he became a regular in classic productions of *12 Angry Men*, *Inherit the Wind*, *Our Town*, and *The Guys*. He loves playing colorful characters in musical comedies; *Spamalot*, *The Drowsy Chaperone*, *Full Monty*, *Best Little Whorehouse in Texas*, and many more. Jim started with the Winnepesaukee Playhouse when we were located in the Weirs and served on the Board of Directors as President and a trustee. He

voiced the curtain speeches for a number of years, ushers shows, and helps where ever he can earning an N.H.T.A. Theatre Hero Award in 2019. Jim also performs around New England with his award winning Doo Wop group the Rockin Daddios.

## CAST AND PRODUCTION TEAM

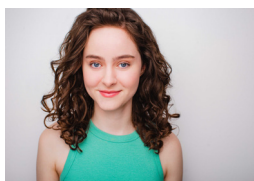


**Miles Sargent** (Herman the Henchman) is a sixteen year old sophomore from Meredith, NH. They have been in several performances here at the Winnepesaukee Playhouse, starring as Mr. Beaver in *Narnia*, Officer Barrel in *Urinetown*, and Oedipus in *Oedipus Rex*, and have also performed in the McEvoy Theatre at New Hampton School as Seymour in *Little Shop of Horrors* and Orpheus in *Eurydice*. Their most recent performance at the Winnepesaukee Playhouse was [title of show] as Jeff. As well as being on the theatrical stage, they

also love performing music: playing the cello and piano as well as some singing!

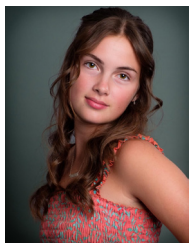


**Nicole Sullivan** (Choreographer/Fairy Cakes) is an eighteen year old dancer, dance teacher, and choreographer. She has been dancing for a total of fourteen years and acting for eight years. Nicole has been in *Aladdin* (2014), *Snow White* (2017), *The Little Mermaid* (2018), and *Beauty and the Beast* (2019). Nicole dances and teaches for The Studio At Meredith Bay, and *Sleeping Beauty* is the first show she has choreographed. She has won various awards including Miss Showbiz 2018. Nicole recently graduated from Inter-Lakes High School in June of this year, and is now teaching dance and becoming involved in the real estate industry. She is thrilled to have choreographed this silly pantomime, as-well as dance in the show! Nicole hopes everyone enjoys the production of *Sleeping Beauty*!



**Celeste Vandermillen** (Fairy Nuff) is a 2022 graduate of NYU Steinhardt's Music Theatre program. She most recently appeared in *The Sea Does Not Reach Naples*, an MFA Directing thesis at Columbia University. Earlier this year, she was seen in *Ships: A Musical Trilogy* at The Tank and *Tinytanic* at SoHo Playhouse, as well as a Columbia production of *The Tempest* and a reading of *House of Eerie Figures*, a new musical. Credits at NYU include *Into the*

*Woods*, *Macbeth*, and *Trial Period*.



**Ruby Walker** (Fairy Lights) is a fifteen year old dancer. She has been dancing for 13 years total at the Studio at Meredith Bay. She takes multiple different classes and competes with the performance team. She is a sophomore at Inter-Lakes High School. Outside of dance class she enjoys snowboarding, swimming, and traveling. This is her first panto and is so excited to be involved.

**DW** (Costume Designer) Theatrical work has appeared regionally across the country. NYC design credits include NYMF, NYC FRINGE, Theatre Row, The Mint, Cherry Lane, APAC, Prospect Theatre Company, Gallery Players, The Gym @ Judson Church, etc... Broadway Associate & Assistant Credits include: *RACE*, *Everyday Rapture*, *Cinderella*, *The Threepenny Opera*, *The Apple Tree*, *The Wedding Singer*. Feature Film Designs include: *Little Sister* and *Peter & Vandy*. Styles for Broadway.com. Guest stylist for The Skivvies. Resident Designer at the New York Film Academy and The Actors Studio Drama School.

# CHRISTOPHER P. WILLIAMS ARCHITECTS, PLLC

PO Box 703 • Meredith, NH 03253 • 603-279-6513  
[www.cpwarchitects.com](http://www.cpwarchitects.com)



Our award winning firm has provided innovative and environmentally sensitive design solutions since 1984. We specialize in sustainable building practices and offer expertise in incorporating green systems into client projects to enhance and protect the ecosystem, and conserve natural resources. We strive to design buildings that fit into their cultural context and environment.



Winnepesaukee Playhouse  
Merchandise  
For Sale in our Lobby!



## PERMANENT STAFF

**Thom Beaulieu** (Lighting Designer/Director of Finance and Fundraising) is pleased to be a part of the staff at the Playhouse. An award winning lighting and sound designer, Thom holds a BFA in Drama from Carnegie Mellon University's School of Drama, as well as an MS in Physics from Georgia State University. He enjoys golf, boating, and poker, and lives in New Hampton with his wife Meredith and daughter Molly.

**RJ Bogues** (Assistant Technical Director) is returning for his second season at the Winnepesaukee Playhouse. Previous Winnepesaukee Playhouse credits include the 2021 Summer Season (General Technician) and *Glorious* (Bellhop 1). Outside credits include *Godspell* at ACT of CT (Overhire Carpentry), *Spamalot* at Musicals at Richter (Master Carpenter), and *The Nightman Cometh* at CCSU (Master Carpenter).

**Donna Findlay** (Props Supervisor/Office Administrator) joined the Playhouse in 2015 after retiring from a 21 year career at a public utility in Manchester, NH and spending 5 years as a para-educator in the Inter-Lakes School District here in Meredith. She gives unending love and gratitude to Jim, Cortland, and John.

**Matthew Hutchens** (Technical Director) is a carpenter from North Carolina and graduated from the University of North Carolina at Greensboro in 2019. His goals include learning while also teaching others new skills in the theatre industry. He has worked in many theatres from Ogunquit Playhouse, Dorset Theatre Festival, and even Shakespeare and Company to name a few.

**Timothy L'Ecuier** (Director of Education) (he/him/his) has BAs in theatre and English from Keene State College as well as an MA and MFA in theatre education and applied theatre from Emerson College. He holds New Hampshire state teacher certifications in both English and theatre and taught high school in New Hampshire for ten years. He is a former president of the New Hampshire Educational Theatre Guild, an Equity stage manager, and a lecturer in the Music, Theatre and Dance Department at Plymouth State University, where he directed *Our Town*, *An Enemy of the People*, and *The Curious Incident of the Dog in the Night-Time*. Directing with the professional company at the Playhouse: *The 39 Steps*, *Red, Grace and Glorie*, *A Midsummer Night's Dream*, *The Rocky Horror Show*, *Mary's Wedding*, *California Suite* and *The Complete Works of William Shakespeare (Abridged) [Revised]*. Directing with the Education Department at the Playhouse: *Joseph and the ATD*, *Treasure Island*, *The 25th Annual Putnam County Spelling Bee*, *Romeo and Juliet*, *Carrie the Musical*, *Godspell*, *Lord of the Flies*, *The Secret in the Wings*, *Aida*, *The Ash Girl*, *The Legend of Sleepy Hollow*, *Urinetown*, *State of Play: Call and Response*, *Oedipus Rex*, [title of show], and *Alexander and the Terrible, Horrible, No Good, Very Bad Day*. He also directed *Company* with the Winni Players. Directing favorites elsewhere: *Pippin*, *Electra*, *Fahrenheit 451*, *The Laramie Project*, *Spring Awakening* (the play and the musical), *Jesus Christ Superstar*, *Jane Eyre*, *I Am My Own Wife*, *Proof*, *Altar Boyz*. He has worked with many New Hampshire and Boston area theatres including American Stage Festival, Barnstormers, theatre KAPOW, Peacock Players, StageCoach Productions, Greater Boston Stage Company, the Nora Theatre Company, and Underground Railway Theater. [timothylecuier.com](http://timothylecuier.com)

## PERMANENT STAFF

**Lesley Pankhurst** (Props Supervisor/Patron and Company Services Director) is one of the founders of the Winnepesaukee Playhouse. Lesley is a graduate of Wellesley College with an MA in Arts Administration and Cultural Policy from Goldsmiths College, University of London. In addition to serving as the Marketing Director of the Playhouse for its first 13 years, she has also designed costumes for many of its productions and has twice been the recipient of the NH Theatre Award for Best Professional Costume Design for *Two Rooms* (2007) and *The Glass Menagerie* (2008). She is the proud mom to her daughter, Sophie, and her crazy cat, Sasha.

**Neil Pankhurst** (Director/Sound Designer/Scenic Designer/Producing Artistic Director) is a founding member and Artistic Director of the Winnepesaukee Playhouse. He was born, raised and educated in the UK, coming to NH in 2003. He has a BA and Post Graduate Certificate of Education in Drama from the University of Wales and an MA in Arts Education (Drama) from The Royal Central School of Speech and Drama in London. From 1988 - 2002 he taught and directed or produced over 100 productions around the London area. For the Winni Players Neil's direction has included: *The Crucible*, *The Servant of Two Masters*, *12 Angry Men*, *Caucasian Chalk Circle*, *The House of Bernarda Alba*, *Big River*, *All My Sons*, and *The Government Inspector*. For the Education Department he has directed *Grimm Fairy Tales*, *Voyage Around the World*, and *The Comedy of Errors*. For the professional company his direction has included *Proof*, *The Woman in Black*, *Stones in His Pockets*, *The Glass Menagerie*, *Around the World in 80 Days*, *Sleuth*, *Blithe Spirit*, *The Tempest*, *Gigi*, *The Mousetrap*, *Sherlock Holmes*, *The 39 Steps*, *The Importance of Being Earnest*, *Aladdin*, *The Business of Murder*, *Jesus Christ Superstar*, *Table Manners*, *Sleeping Beauty*, *Tilting Ground*, *Peter and the Starcatcher*, *Living Together*, *The Waltz*, *Jack and the Beanstalk*, *The Hound of the Baskervilles*, *Round and Round the Garden*, *Snow White*, *Charley's Aunt*, *Ghost the Musical*, *The Little Mermaid*, *Insignificance*, *Guess Who's Coming to Dinner*, *Beauty and the Beast*, and *Betrayal*. He has been fortunate enough to win ten NH Theatre Awards including four for Best Professional Direction – *The Woman in Black* (2007), *The Glass Menagerie* (2009), *Around the World in 80 Days* (2010), and *The Waltz* (2016). He has directed for Plymouth State University and M&D Productions in N. Conway, designed lights for Advice to the Players and has served as an adjudicator for the NHETG. He lives in Meredith with one wife, one daughter, and one cat.

## The community we service is the community we support.

We thank our local communities for trusting us to be there when they need us, and are proud to do our part in supporting them.



Reliable Deliveries | Responsive Service

[www.deadriver.com](http://www.deadriver.com)



*the*  
**WINNIPESAUKEE**  
*playhouse*



*20th Season!*

**SPONSORSHIP AND  
ADVERTISEMENT OPTIONS  
2023**

Contact [lesley@winniplayhouse.org](mailto:lesley@winniplayhouse.org) and your  
ad could be HERE in 2023!

# Want to make someone smile all year long? Make a gift today and help give the gift of theatre.



Theatre celebrates what makes us unique and reminds us what we have in common.

It cultivates the empathetic communities we need right now.

**You have the power** to bring people together. 73% of Americans say that the arts are a positive experience in a troubled world. At the Winnepesaukee Playhouse we make great shows with powerful performances that inspire thought, laughter, tears, and joy. It is these types of shared experiences that **unify communities**.

**Your support** can directly impact the art made in this community. We need you.  
**You make it possible to bring art to life.**

**You can be part of** a creative engine that generates both meaningful personal experiences and social, educational, and economic benefits for the community. When you give to the arts, the arts give back. Be part of something that makes the world a better place. Join us and be a hero by **making more people smile all year long**.

**Your gift will support the Winnepesaukee Playhouse**, a 501(c)(3) nonprofit, and the work being done here. Make your gift today online, by calling 603-279-0333, or by visiting the box office to make a one-time gift or start a monthly donation. Art like this in your community fosters empathy, a critical element for the human experience. Art is critical to a vibrant society. You can be the one to support the Playhouse **because art matters**.











# Thanks

*Thank you for recognizing that art matters.  
It takes everyone working together to continue to create great theatre.*

## *Directors' Circle*

---

### **\$25,000+**

Anonymous  
Anonymous  
Paul and Sharon Steinwachs  
US Small Business Administration - SVOG

### **\$10,000+**

Anonymous  
The Baker Family  
Beth and Rich Compson  
New Hampshire State Council on the Arts  
The Shubert Foundation  
Anita E. Springer  
Laura and Gary Stephan

### **\$5,000+**

Richard and Carol Gerken  
Lakes Region Children's Auction  
Meredith Rotary

### **\$2,500+**

Gloria and Irving Fox  
Catherine Mann  
Ambassador Paul Speltz and  
Renee Speltz  
John & Muff Walker

### **\$1,000+**

Ray and Karen Abramson  
Marc and Carol Bard  
Jim and Leslie Chapman and  
Meredith Whole Living Center  
Judy Cookman  
Ray Craigie and Pam Smarling  
Patricia Diekroger and Kevin Foster  
Diane and Chuck Fray  
Liz and Bob Gabel  
James Wittredge Hill  
David and Joanne Jeannette  
Gerald Kadish  
John and Margie Kreidler  
Joan and David Martin  
Louise and Sandy McGinnes  
Susan and Douglas McLane  
Sharon and Tom Messmore  
Debra Nash  
Kate O'Brien  
Neil and Lesley Pankhurst  
Barbara Pitsch  
John and Cleo Robbins  
Jim and Judi Rogato  
Robert and Margie Sallies  
Jason and Deanne Sargent  
Carolyn S Scattergood  
Bruce and Betsy Thomas  
Graham and Julia Thomson  
Barbara and Gordon Webb  
Barbara Zeckhausen

# *to YOU!*

## *Actors' Circle*

---

### **\$500+**

Anonymous  
Anonymous  
Michael Ames/Half Moon  
Enterprises, Inc  
Caroline Bald  
The Denny Knight Family  
Fund of the Princeton  
Area Community  
Foundation  
Kelly Dunn  
Kempton and  
Maureen Giggey  
Paul and Beverly Jaques  
Barbara & Chris  
Maciejewski  
Alida and Peter Millham  
Charles Robert and  
Eileen Pettie  
Mark and Susan Primeau  
Patricia Schlesinger  
Gil Schohan  
Robert and Anne Shaw  
Judy and Steve Siegel  
Mr. & Mrs. Brian Winslow

### **\$250+**

Anonymous  
Anonymous  
Tom and Patricia Barrick  
Mike and Lisa Brien  
James Burke  
Bob & Elaine Carangelo  
Ken Chapman and  
Carol Lowden  
Margaret Clement  
James and Bonnie Doherty  
Carolyn & Ken Filpula  
The Findlay Family  
John and Carol Ford

Robert and Eileen Gosselin  
Don and Lou Ann Harris  
Alison Hildebrand  
Patricia Immen  
Dr. and Mrs. Bernard  
Kramer  
Charlotte Lee and  
Ron Turbayne  
Kathleen Lyons  
Ann McClellan  
Alan and Carol Metevia  
Kaitlin O'Neil  
Deborah Seid and  
Tom Green  
Edward Sonn and  
Sharon Forde  
David Stamps and  
Judith Buswell  
Jacqueline Truesdale

### **\$100+**

Anonymous  
Anonymous  
Anonymous  
Anonymous  
Amazon Smile Foundation  
Christine and Carlos  
Anderson  
Cecile Andrews  
Lisa Baroody  
Ginny Barunas  
Chuck and Sue Bates  
Thomas Bengston  
David Berard  
Marty Berman  
Roger and Deborah Blake  
Linda and John Browne  
Jay Buckley  
Sarah Bunkley and  
Richard Smith

Kathleen A Burke  
Alison and Christopher  
Casko  
Elizabeth Chambers  
Jean and Don Clarke  
Robert Connors  
The Country Carriage  
David and Sylvia Countway  
Amanda Dickinson  
Diane Dion  
Martha Dolben  
Tami and Mark Donohoe  
Carol and Robert Doretti  
Denise Doyle  
Ms. Cornelia Eschborn  
Georgene Fabian  
Tony and Linda Ferruolo  
Andrew Fleischmann  
Susan Gaines  
Dana and Sherry Gardner  
Jamie Gegerson  
Casey and Drew Gerken  
Leo Glasheen  
James A Gregoire  
Jean Halfmann  
J William Harris  
In Memory of  
Patricia Giroux  
Ira and Lynn Keltz  
Nancy Kubecka  
Maureen Kuharic  
Peter and Linda L'Ecuyer  
Jonathan and Glenna Lee  
Nancy and Newbold LeRoy  
Marc and Carroll Levey  
Lisa Lovett  
John and Carol Low  
Peter and Maryann Magoun  
Bob Maloney and  
Bonnie Hunt  
Jonathan Marro  
William and Stefanie Marsh

## *Actors' Circle (continued)*

Dr. Warren & Annette Mason	Marcy Alkalay	Chris Slater
Heather McKenny	Robert and Kay Anderson	Keith Stevens
Mary and Jim Michener	Mrs. William Angevine	Dorothy Stratton Marino
Margaret Mongiello	Karen and Paul Bemis	Marlene Taussig
Martha Oberstein	Nancy Brennan	Sara Tirrell
Diane and Tom Orlowski	Matt and Carey Cahoon	Lindsay Weiner
Deborah Osborne	John and Brenda Clayton	Tim and Anne Whiting
David and Fredda Osman	Alexa Dembiec	
Norm and Charlotte Otto	Katherine Dickie	
A Parnes	Mark Edelstein	<i>All Other Gifts</i>
Daniel Patterson	David Ellis and Lee	Anonymous
Celine Perron	FayEllis	Anonymous
Mark Pettie and Sue	Bob Foster and Mike Gillis	Carolyn Ames
Molitor	Mark and Linnea Fraser	The Andrews Family
John and Dorothy Piquado	William Gartner	Richard and Rosalie
Rosemary Pizzuti	Elizabeth Geiler	Beaulieu
Walter and Christine	Bryan Graf	Thom Beaulieu and
Powers	Hannaford Community	Meredith Brown
Sharon Richardson	Bag Program	Kate Boucher
The Rickenbachs	Deb Hastings and Fred	Catherine and Paul Breen
Rebecca Rigden	Wernig	Lindsey Bristol
Mary and Dave Rogers	Betty Heaney	Nancy Carsen
Brad and Elizabeth	Andrew Hendrick	Susan Cassidy
Rohdenburg	Gary Jesseman	Bill Charles
Joe Sampson	Constance Kuekan	Rachel Chiffer
Patte and Steve Sarausky	Alexandra Kuftinec	Margaret Christ
Robert Sawyer	Eliza J Leadbeater	Paul Ciborowski
John Soha	The Leighton Family	Kenneth Cohn
Amy Staley	Vincent and Sara Maxson	M Katherine Collins
Thomas Stankosky &	Thomas J. McCabe, Jr	Gay Daigle
Monica Michalsky	Winifred and David	Robert Davies
Judith Stern	McCullough	Alexander Davis
Mr. and Mrs. Fred Strader	Kenneth Meade	Judith Dean
Samantha Tella	Melissa Mellor	Jack Degange
Barbara Ulm	Nancy Morrill	Rick and Harriet DeMark
Deborah & Paul Walker	Jonathan and Anne Nute	Gary and Lisa DiMartino
John and Karen Warren	Francis Page	A.J. Ditty
Mark and Kathleen	Howard and Judi Phelps	Laura Felgate
Whitehead	Clayton Phillips	Angi Francesco
David Wilder	Andrew Pinard	Lisa Fuelleman
Warren and Wendy Witt	Michael Portrie	Frank Garcia
	Elizabeth Ricci	Karen and David Gingrich
	Anthony and Sandra	Zach Glennon
	Sabutis	Jessica Haggett
	Dennis and Kerry	Eric Halvorson
	Schneider	Judy Hayward
	Steven B. Schwartz and	Susanna High
	Paula A. Leonard-Schwartz	Anne Ingard

**\$50+**

Anonymous  
Anonymous  
Donna Acox

Amanda Jennison-Sousa  
Chris Jones  
Valerie and Karl Kimball  
Lynn Kirk  
Daniel Klingenstein  
Robert and Gladys Levy  
Marge Locke  
Thad Long  
Ginnie Lupi  
Marilyn Mark  
Cassandra Mason  
Deirdre A Meehan  
Joel Mercier  
Michelle Minot  
Richard Mogavero  
Suzanne Morrissey  
Karen Perlow  
Peg and Mike Phelan  
Douglas Phelps  
Roger Pinsonneault  
Janet Pratt  
Marta Rainer  
Ulysses Roebuck  
Veronica Rosa  
Scott Rosenthal  
David and Christine Roy

Stuart W Russell Jr  
Mary Sampson  
Angela Santamaria  
Jane Sawyer  
Janine M. Schifino  
Jennifer Simon  
Lori Smock-Joyal  
Evan Sohm  
Leemarie Stelzer  
Nancy Stone  
Cindy Sullivan  
Paul Sullivan  
Kathleen Sweeney  
Jennifer Szendre  
Clayton Titus  
Sharyn Tondel  
Patricia Weston  
Naomi Wheatley  
Lowell Williams  
Pamela Williams

*Donation list dated  
12/15/21 - 12/14/22*

## *Morgenstern Sustainers*

Anonymous  
Anonymous  
John and Linda Browne  
J.W. Hill, Consultant  
Sarah Bunkley and  
Richard Smith

Alison and Christopher Casco  
Casey and Drew Gerken  
Ira and Lynn Keltz  
Susan and Douglas McLane  
Kaitlin O'Neil  
Joe Sampson

Jason and Deanne Sargent  
Mary and Dave Rogers  
Graham and Julia Thomson  
John and Muff Walker  
Barbara and Gordon Webb  
Brian Winslow

These are people who participate in the continued success of the Playhouse through their recurring gifts, and we are so grateful for the ongoing support.

# ***We appreciate your support!***

**Did you know that in typical years ticket sales only account for about 50% of what it takes to run the Winnepesaukee Playhouse?**

Sadly, these have not been typical years recently. But patrons just like you have been so supportive and generous. No gift to the Playhouse is too small, and every donation helps us keep artists employed and audiences entertained throughout the year. If you would like to become a donor, or make an additional donation, your tax-deductible gift will be instrumental in helping to ensure the Playhouse can continue to provide the level of programming you have come to expect.

You can make a donation today by visiting the box office, calling us at (603) 279-0333, or visiting our website: [www.winnepesaukeeplayhouse.org](http://www.winnepesaukeeplayhouse.org)

## **Is it time to take your involvement to the next level?**

- You could make a one-time gift of \$100
- Join the Morgenstern Sustainers with a monthly gift of \$10
- Join our Directors' Circle at \$1,000 a year (\$85/month)

You can be the one to inspire, engage, and entertain the community by making a tax-deductible gift. You can mail us a check, use your credit card online or over the phone, or stop by the box office today.

## **There are even more creative ways to support the Winnepesaukee Playhouse!**

Have you ever considered including the Winnepesaukee Playhouse in your will? A gift through your will or estate plan enables you to support our mission and make a difference in the future of the Winnepesaukee Playhouse. Did you know you can use your IRA required minimum distribution to make a tax-free donation to a non-profit like the Winnepesaukee Playhouse? Questions? Speak with your financial advisor, or contact Thom Beaulieu at 603-279-0333 or [thom@winniplayhouse.org](mailto:thom@winniplayhouse.org).





## **A FULL SERVICE LAW FIRM**

Estate Planning and Probate  
Business & Non-Profit  
Real Estate  
Employment & Labor  
Municipal

Land Use & Development  
Telecommunications  
Litigation  
Environmental  
Utility

COUNSELING INDIVIDUALS, BUSINESSES,  
ORGANIZATIONS AND MUNICIPALITIES  
THROUGHOUT NEW HAMPSHIRE

DONAHUE, TUCKER & CIANDELLA, PLLC

**PROUDLY SUPPORTING THE ARTS  
FOR OVER 30 YEARS**

OFFICES IN MEREDITH, CONCORD, PORTSMOUTH, & EXETER, NH

**WWW.DTCLAWYERS.COM**

**1-800-566-0506**



The Winnepesaukee Playhouse Education Department promotes the developmentally appropriate acquisition of theatrical skills, fosters a life-long appreciation of the technique, history, and literature of theatre and its ancillary fields of study, and—above all—seeks to inspire its students to use theatre as a tool to develop empathy, with which they may explore and come to better understand the world.



### **Educational Programming at the Winnepesaukee Playhouse includes:**

- Four fully realized productions annually for students ages 8-18
- Summer camps for students ages 5-12
- Focused summer training for students ages 13-18
- Classes and workshops for participants of all ages
- Post-performance talkbacks
- The Symposium Series
- Backstage tours
- Informative articles in playbills
- Teacher training
- College internships
- Theatre and arts education advocacy



*For more information...*

[winnepesaukeeplayhouse.org/education](http://winnepesaukeeplayhouse.org/education)

[education@winniplayhouse.org](mailto:education@winniplayhouse.org)



# MIRACLE FARMS

## LANDSCAPE CONTRACTORS

Moultonborough, New Hampshire (888)288-8252



*Extraordinary landscapes begin here!*

Landscaping

Maintenance

Hardscapes

Mulch/Loam/Compost

Firewood Dry/Green

**603-253-9292**

[www.miraclefarmslandscaping.com](http://www.miraclefarmslandscaping.com)



The Winnepesaukee Playhouse is grateful to the following foundations for their support.

THE **SHUBERT**  
FOUNDATION INC.



**New Hampshire**  
State Council on the Arts



STEINWACHS FAMILY  
FOUNDATION



The Winnepesaukee Playhouse is supported in part by a grant from the New Hampshire State Council on the Arts & the National Endowment for the Arts.



# RE/MAX

## Bayside



*Welcome to the  
Lakes Region!*



### New Hampshire's Real Estate Experts!

Residential/Commercial/Land/Business Brokerage

208 Daniel Webster Highway, Meredith, NH 03253

(603) 279-0079

604 Main Street, Laconia, NH 03246

(603) 527-8200

[www.baysidenh.net](http://www.baysidenh.net) / [info@baysidenh.net](mailto:info@baysidenh.net)





*Very Music Very Italian & Very Good!*



# *Giuseppe's*

## *Pizzeria & Ristorante*

**This unique and popular restaurant is  
one of the Lakes Region's most loved since 1989!**

Serving Award-Winning Gourmet Pizza, Pasta, Seafood,  
Steak, Chicken, Veal, Vegetarian, Vegan, Gluten-Free, Soup, Salads,  
Sandwiches, Desserts, Beer, Wine and Spirits!

**Lunch & Dinner Daily • Reservations Required**  
**Curbside Pick-up • Delivery Nightly (within 5 miles 4-8 pm)**

Corner of Routes 3 & 25 • Mill Falls Marketplace, Meredith, NH

**(603) 279-3313**

**Menu, daily specials, menu, hours and info. at [giuseppesnh.com](http://giuseppesnh.com)**





**LAKES REGION  
COMPUTER**

**Celebrating 25 Years in Business!**  
**A ONE STOP TECH SHOP**

Apple • PC • Verizon • Repairs  
IT Business Services

## **Visit Our Retail Store!**

- Verizon Authorized Retailer
- Apple Premium Service Provider
- Selling Apple, PC, Phones & Accessories
- Phone and Computer Repairs

## **IT Business Services Include:**

- Computer Systems and Network Installations
- Systems Monitoring and Management
- Backup and Disaster Recovery
- Security and Compliance
- Cloud Solutions
- IT Inventory and Planning
- On-Site and Remote Support
- Wireless Network Planning and Installations
- Security Camera Installations
- Nextiva Business Phone Systems

12 Main Street, Center Harbor, NH 03226

Phone: 603.253.9847 • Website: [lakesregioncomputer.com](http://lakesregioncomputer.com)

Follow us!  [lakesregioncomputer](https://www.instagram.com/lakesregioncomputer)  [lakesregioncomputer](https://www.facebook.com/lakesregioncomputer)