

the WINNIPESAUKEE playhouse

20TH SEASON



CELEBRATION



SHOUT!

The Mod Musical

Created by Phillip George & David Lowenstein

JULY 12-22

SPONSOR:



PLATINUM GROUP
— AT RE/MAX BAYSIDE —

winnepesaukeeplayhouse.org

603.279.0333 | 33 Footlight Circle, Meredith NH 03253



Meredith Marina

603.279.7921



Scan Me
for
Directions!

BOAT RENTALS

**& Jet-Ski
Rentals**



Water-Ski
& Tubing
Packages
Available!

Make A Splash!



One of the largest
BOAT RENTAL FLEETS
on Lake Winnepesaukee!



NEW & USED BOAT SALES

Hurricane

tige
BOATS

Sweetwater

Sanpan

Aqua Patio

Premier
Pontoons

MARINE STORE & BOATING ACCESSORIES

603-279-7921



BOAT SALES • BROKERAGE • VALET • SERVICE • RENTALS • STORAGE

2 Bayshore Drive, Meredith, NH • Meredith Bay • Lake Winnepesaukee



**Meredith
Marina**

www.meredithmarina.com

Board of Trustees

Renee Speltz
Chair
Retired Mental Health Counselor and
Consultant

Bill Bald
Vice Chair
President
Melcher and Prescott Insurance

Raymond Abramson, CPA
Treasurer
Owner
Abramson & Company, LLC

Kaitlin M. O’Neil
Secretary
Attorney
Normandin, Cheney & O’Neil, PLLC

Members at Large

Eden Unger Bowditch
Author
Plymouth State University

Julie Hirshan Hart
Editor
The Laconia Daily Sun

Lesley Pankhurst
Co-Founder and Patron and
Company Services Director
The Winnepesaukee Playhouse

Sean C. Sullivan, CPA
Business Consultant

Kathleen Sweeney, CPA
Owner
Kathleen Sweeney CPA

Julia Thomson
Legal Consultant

Brian Winslow
Director of Community Relations
Granite VNA



Permanent Staff

Artistic Director.....Timothy L’Ecuyer
Managing Director.....Thom Beaulieu
Patron & Company Services Director.....Lesley Pankhurst
Dir. of Education & Community Engagement.....Cory Lawson
Production Manager.....Amanda Dickinson
Technical Director.....Matthew Hutchens
Assistant Technical Director.....RJ Bogues
Bookkeeper.....Donna Findlay

Professional Season Company

Scenic Charge Artist.....Gwen Elise Higgins
Electrics Supervisor.....Libby Hinshaw
Props Supervisor.....Nick Winkler
Scenic Carpenter.....Francisco Fialho
Audio/General Technician.....E. Wilson
Costume Assistant.....Melody Carter
Wardrobe Supervisor.....Natalya Salvati
Camp Administrator.....Becky Gregoire

Proud Members of

NEW HAMPSHIRE

PROFESSIONAL THEATRE

ASSOCIATION

WWW.NHPTA.ORG INFO@NHPTA.ORG

The Winnepesaukee Playhouse
33 Footlight Circle, Meredith NH 03253
Tel. (603) 279-0333

www.winnepesaukeeplayhouse.org

For Your Information

Please turn your cell phone and any other electronic devices completely off. Leaving them on silent or vibrate may interfere with our communication systems and interrupt the flow of the performance.

Please refrain from photography or recordings of any kind, as this violates our royalty agreements.

Please note that if you must, in an emergency, use the restrooms during the performance, our House Manager will return you to your seat at an appropriate break in the performance.

Please be sure you can hear us! For our theatre patrons who have experienced varying degrees of hearing impairment, please take advantage of our state-of-the-art **Assisted Listening System**.

For indoor performances: If you are a hearing aid user who has a tele-coil function in your hearing aid you will be able to access our system directly after turning on that function. You may need to contact your hearing aid provider to inquire about the tele-coil in your particular hearing aid and ensure that it has been activated and instructed on how to turn it on when you are in the theatre. For patrons without tele-coil hearing aids, we have a limited number of headsets available on a first-come, first-served basis. Please see the box office if you would like to use one.

The indoor Assisted Listening System is made possible by a generous donation from The Maurice and Rhoda Miller Endowment Fund.

For outdoor performances: All actors will be amplified. If you'd like further amplification, headsets are available on a first-come, first-served bases from our reception table.

Please keep in touch! Visit our website at www.winnipesaukeeplayhouse.org to join our email list. You can also follow us on Facebook, Instagram, and Twitter.

Dear Friends:

On behalf of Managing Director Thom Beaulieu, myself, and everyone at the Winnepesaukee Playhouse, thank you for joining us for our 20th season! All three departments of the Playhouse—professional, community, and education—have fantastic things planned for 2023 and I am honored to have the privilege of helping to shepherd all of them to the stage in my first season as Artistic Director.



Marking our 20th season is an opportunity for all of us to reflect on the path that brought us here. It would be impossible for me to do so without mentioning the deep gratitude I have for the unflagging effort of my predecessor, Founding Artistic Director Neil Pankhurst. Working with him for the past nine years has prepared me to step up into this position in a way that nothing else could. I am additionally grateful for his continued support and can't wait to welcome him back to write and direct this year's holiday Panto *Cinderella*.

This season revives some Playhouse favorites: American classics, a smash hit ABBA jukebox musical, the poignant story of the friendship between a pig and a spider that many of us grew up loving, and more. It also honors and extends the Playhouse's long-standing tradition of bringing you an exciting variety of work transcending time, geography, and genre. Bringing all of this to life for you are talented teams of theatre artists, some of whose work you already know and love as well as extraordinary professionals, students, and community members sharing their work with us for the first time.

An anniversary like this is also an opportunity to turn our eyes to the future and think about what might be. This year's transitions in leadership, particularly the addition of Amanda Dickinson and Cory Lawson to our staff, have already had invigorating effects. In the coming months and years, we will also shake out the cobwebs by bringing you new programming, new initiatives, and new ways of bringing epic storytelling to our intimate spaces. We will also rededicate ourselves to what works best.

Whether you are a longtime Playhouse supporter or are joining us for the first time, we are thrilled that you have chosen to be part of our community. We are more excited than ever to walk into the future together.

--Timothy L'Ecuyer
Artistic Director

MOULTON FARM

Meredith, N.H.



Farm Market Open Daily

Mid-March Through Dec. 31

DRIVEWAYS • WALKWAYS
PARKING LOTS • ROADS



603-279-1499

www.bryantpaving.com



FIND YOUR ESCAPE!

DOWNTOWN MEREDITH

603 279.3905

312 Daniel Webster Hwy

DOWNTOWN LACONIA

603 409.6756

630 Main St.

www.innisfreebookshop.com

KATHLEEN E. SWEENEY

CERTIFIED PUBLIC ACCOUNTANT

P.O. Box 1259
Center Harbor, NH 03226
(603) 253-4011
Fax (603) 253-4051

P.O. Box 1187
North Conway, NH 03860
(603) 356-7036
Fax (603) 733-5250

ksweeney@metrocast.net
www.kathleensweeneycpa.com

Thank you for voting us best in the lakes region



Family Owned & Operated Since 1946 • (603) 524-1417 • www.foleyoilco.com

CELEBRATING
75 YEARS
1946-2021

Heating Oils
Propane
Diesel
24-Hour Emergency Service
Boiler Installations
Preventive Maintenance

Mello Moose COFFEE HOUSE

136 Daniel Webster Hwy, Meredith
(603) 677-7037

Great coffee, breakfast sandwiches, and
fresh baked goods to start your day!


TWIN BARN'S
BREWING CO.

194 Daniel Webster Hwy
Meredith



**Bring Ticket Stub To
Twin Barns for 50%
off apps**

*We are thrilled to support
The Winnepesaukee Playhouse*

Temple B'nai Israel
Laconia, NH



TBINH.ORG

Prescott  *Farm*
Environmental Education Center



*After the play—
we'll help you find ways to play
outside!*



928 White Oaks Road, Laconia
603.366.5695 prescottfarm.org

Before the Play
enjoy dinner at



or


STEAKS & SEAFOOD

253-4762
Center Harbor

524-9373
Lakeport

www.magicfoodsrestaurantgroup.com

Supporting the Arts LAURA & GARY STEPHAN

In loving memory

Dorothy Marie Schrader

Gerald Lewis Schrader



The Laconia Daily Sun Don't Miss a Day!

Read online at laconiadailysun.com

sign up for daily newsletters • home delivery call (603)737-2020



Lakes Region
FENCE

Proudly
Supporting
The
Winnepesaukee
Playhouse

Residential Fencing Specialists
FULLY INSURED



SINCE 2005

www.LRFence.com

222 Country Club Rd
Gilford, NH 03249

Call Us for a Free
Estimate!
603.524.6061

BRAVO WINNI PLAYHOUSE!

Patrick's
IRISH ROOTS - AMERICAN SPIRIT

patrickspub.com • 603) 293-0841

18 Weirs Rd Gilford, NH

HART'S
TURKEY FARM
Restaurant



233 Daniel Webster Hwy
Meredith, NH 03253
603-279-6212

hartsturkeyfarm.com

Regular
Children &
Mini
Menus
Available
Gift Shop
Catering

IRWIN
AUTOMOTIVE GROUP

603-524-4922 | irwinzone.com

Serving New Hampshire Since 1951

59 Bisson Avenue Laconia, NH

446 Union Avenue Laconia, NH



2023 SHOW LISTINGS

SPRING

March 24-26: Charlotte's Web

Adapted by Joseph Robinette, Based on the book by E.B. White

Radiant! Terrific! Some pig!

All your favorite characters from E.B. White's classic children's novel come to life on the stage as Wilbur, a runt of a pig, ends up under the protection of an extraordinary spider, Charlotte. Charlotte saves Wilbur's bacon with the magical words she weaves in the web while teaching him the true meaning of friendship.

Sponsored by:



NEW
HAMPTON
SCHOOL

April 14-16: Twelfth Night

By William Shakespeare

If music be the food of love, play on!

A shipwreck. Separated twins. Mistaken identity. Unrequited love. Lost in an unfamiliar land, quick-witted Viola disguises herself as a man and finds herself in the middle of an explosive love triangle in one of Shakespeare's most beloved romantic comedies.

Sponsored by:



NEW
HAMPTON
SCHOOL

April 27-30: Ken Ludwig's Lend Me a Tenor

A screwball comedy from the master of farce!

When a world-renowned opera star ends up passed out in a hotel room before he is due on stage, a lowly office assistant is persuaded to don his costume and go on in his place. But when our star revives, hilarity ensues. Mix two tenors in two identical costumes with a singing bellhop and a seductive soprano, and you get chaos of operatic proportions.

Sponsored by:



THE *Winni*
PLAYERS

2023 SHOW LISTINGS

PROFESSIONAL SEASON

June 15-July 8: Mamma Mia!

Music and Lyrics by Benny Andersson and Björn Ulvaeus and some songs with Stig Anderson,
Book by Catherine Johnson, Originally Conceived by Judy Crayme

The global smash-hit musical returns to the Playhouse!

Over 60 million people all around the world have fallen in love with the characters, the story, and the music that make **Mamma Mia!** the ultimate feel-good show! A mother. A daughter. Three possible dads. And a trip down the aisle you'll never forget!

Sponsored by:

Delivering on A promise.™



July 12-22: SHOUT! The Mod Musical

Created by Phillip George & David Lowenstein

The music, the fashion, and the freedom of the swinging 60s!

This smashing revue tracks five groovy gals as they come of age during those liberating days that made England swing! Join this fast-paced journey through infectious and soulful pop anthems and ballads like "To Sir With Love," "Downtown," "You Don't Have to Say You Love Me," "Son of A Preacher Man," and "Goldfinger." Groovy, baby!

Sponsored by:



July 27-August 12: Agatha Christie's Murder on the Orient Express

Adapted by Ken Ludwig

All aboard for a trip you'll never forget!

Just after midnight, a snowdrift stops the Orient Express in its tracks. The luxurious train is surprisingly full for the time of the year, but by the morning there is one fewer passenger. An American tycoon lies dead in his compartment, stabbed eight times, his door locked from the inside. Isolated and with a killer in their midst, the passengers rely on detective Hercule Poirot to identify the murderer – in case they decide to strike again.

Sponsored by:



2023 SHOW LISTINGS

PROFESSIONAL SEASON

August 16-26: Driving Miss Daisy

By Alfred Uhry



An open road of possibility

Uhry's portrait of an aging Southern woman and the Black man hired to be her driver. What starts out as indifference and disdain soon turns into a relationship of mutual trust and compatibility as they break down each other's defenses and come to realize that friendship comes in all different packages.

Sponsored by:

LOVERING
Cars you love from people you trust.

VOLVO
Concord Meredith Nashua

98.3 fm
Frank

August 31-September 9: Sweeney Todd, The Demon Barber of Fleet Street

Music and Lyrics by Stephen Sondheim. Book by Hugh Wheeler. From an adaptation by Christopher Bond

A deliciously gruesome musical!

Attend the tale of the vengeful barber and the scheming pie shop owner who have been haunting the stage since the show's legendary Broadway debut in 1979. **Sweeney Todd** is a tale of love, lust, revenge, and murder set amongst the smog of Victorian England. One of the most deliciously inventive scores of all time, it will leave you hungry for more!

September 14-24: The Glass Menagerie

By Tennessee Williams

"In memory, everything seems to happen to music."

One of the enduring classics of the 20th century, **The Glass Menagerie** is a semi-autobiographical play from one of this country's most beloved playwrights. This memory play is a portrait of a young man attempting to understand the difficult mother and delicate sister who tether him to home. A powerful and haunting piece of theatre.

Sponsored by:

THE FITNESS
Edge
Health Club

2023 SHOW LISTINGS

FALL

October 20-29: Corduroy

Based on the books by Don Freeman, Adapted for the stage by Barry Kornhauser

"I like you the way you are."

When the lights are dimmed and the doors are locked, a department store comes to life.

Corduroy, the stuffed bear with the green overalls, must outsmart the Night Watchman as he waits for his human friend, Lisa, to return. With his missing button, Corduroy may not be perfect, but Lisa proves that sometimes all you need is a friend.

November 8-12: Fiddler on the Roof

Book by Joseph Stein, Music by Jerry Bock, Lyrics by Sheldon Harnick

To Life!



One of the most popular musicals of the 20th century, **Fiddler on the Roof** is the Tony Award-winning sensation that introduced the world to favorite songs like "Tradition!", "Sunrise, Sunset," and "If I Were a Rich Man." Milkman Tevye's world is turned upside down by both the changing political landscape in his home country, and the changing ideals of a younger generation. Set in the area now called Ukraine, today this nearly 60 year old musical resonates in a newly relevant way.

November 30-December 3: Miracle on 34th Street:

A Live Radio Play

Lux Radio Script Adapted by Liz Zazzi

A holiday classic!

The Winni Players annual live radio drama is back! When a department store Santa claims he's the real Kris Kringle, his case gets taken all the way to the Supreme Court. A little girl's belief makes the difference in the 'miracle.' With live Foley effects and a host of on-air personalities, the radio play is an annual highlight!

Sponsored by:



2023 SHOW LISTINGS

WINTER

December 15-31: Cinderella: A Traditional English Panto

By Neil Pankhurst

Don't let the clock run out before you see the biggest panto of them all!

Your favorite family holiday event is back! Filled with bright lights, big costumes, dynamic dancing, silly slapstick for the littles, innuendo for the adults, and a double entendre or two (or three!), our annual English Panto is a treat for ages 3 to 103! "Boo" the villain, "cheer" the hero and join us for an English tradition that has been a holiday staple since the nineteenth century!

We're proud to bring a little old England to New England!



The Winnepesaukee Playhouse Education Department promotes the developmentally appropriate acquisition of theatrical skills, fosters a life-long appreciation of the technique, history, and literature of theatre and its ancillary fields of study, and—above all—seeks to inspire its students to use theatre as a tool to develop empathy, with which they may explore and come to better understand the world.



The Winni Players Community Theatre uses live theatre to provide its members with opportunities for artistic expression, personal growth, and friendship.

We build community through theatre.

NORMANDIN, CHENEY & O'NEIL, PLLC
ATTORNEYS AT LAW

Experience you can rely on. Advice you can trust.

*Wills, Trusts and
Estate Planning*

*Real Estate and
Land Use*

*Commercial and
Corporate Law*

Injury Law

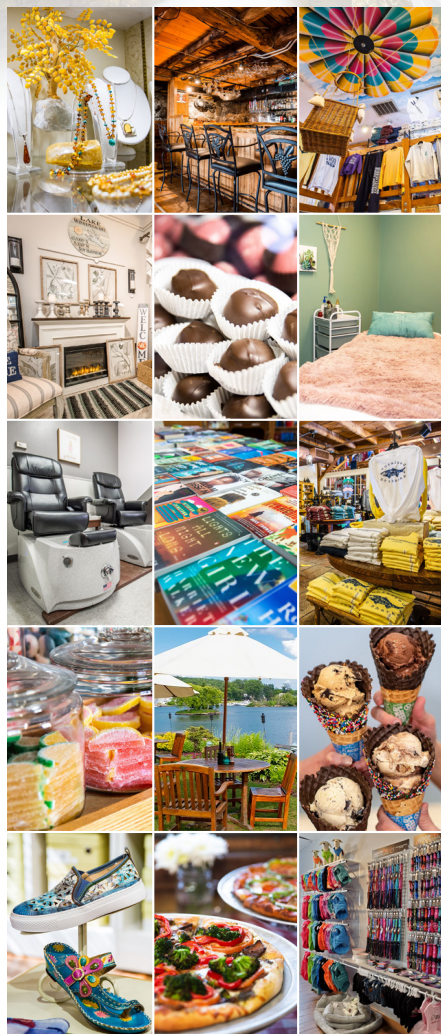
*Civil and Criminal
Litigation*

**603-524-4380
(or 1-800-529-0631)**

www.ncolaw.com

**213 Union Avenue
P.O. Box 575
Laconia, New Hampshire
03247**

SHOP. DINE. EXPLORE.



Lakes Region's Premier Shopping Destination

**Unique Marketplace Shops
5 Distinctive Restaurants • 4 Inns
Boardwalk, Park & Sculpture Walk
Friday Night Music - July & August**

millfalls.com/shop • Routes 3 & 25 Meredith, NH



GOLDEN VIEW
HEALTH CARE CENTER
A Non-Profit Community

The Retreat at Golden View

Short-stay rehab conveniently located in the Lakes Region



You have a choice! Golden View works with hospitals throughout New England, so no matter where your hospital stay may be, you can recover close to home!

The Retreat features private suites with private bathrooms, as well as a tailored therapy plan. We are contracted with many private insurances and Medicare.

To learn more or prebook your stay, please call our admissions department at 279-8111.

Assisted Living • Long-Term Living • Short-Stay Rehab

Meredith, NH • 279-8111 • www.GoldenView.org •





Serving Businesses & Individuals For Over 35 Years

Three Convenient Locations

501 Union Avenue, Laconia	603-528-2241
64 Franklin Street, Franklin	603-934-2942
9 West Street, Lincoln	603-745-3121

www.mdccpas.com

Member AICPA, Private Companies Practice Section, NH Society of CPAs

the
WINNIPESAUKEE
playhouse

FOLLOW US ON



Proud to partner
with Winnepesaukee
Playhouse to provide
another season of
spectacular performances.

**Named
Best-In-State
Banks for NH
by Forbes
Magazine
2022**



Franklin Savings Bank
FSBNH.BANK



#HappyUp at The Studio!

Experience the Lakes Region's most joyful and
eclectic shopping experience for yourself!



598 Main Street, Laconia, NH
603-524-8008 • thestudionh.com



**FIRESIDE INN
& SUITES**

Lake Winnepesaukee

*Year Round Comfort - Grab & Go Breakfast
Indoor Pool & Hot Tub - Outdoor Pool seasonal*

ENJOY the Show!!

603.293.7526 / Firesideinnngilford.com

**PLAN
FIRST.**

Period.

It's about your plan. It's about you.

To have a conversation about your financial plan
with an advice-only guy, give me a buzz.

If you're in the trades and own a business—even
better.

No suits or ties will be worn to this meeting.
And there will be Dad jokes.

36 Country Club Road, Suite 926 – p:603-524-4994 –
joel@planfirstperiod.com – www.planfirstperiod.com

Advisory services through Cambridge Investment Research Advisors, Inc., a Registered Investment Adviser. Cambridge and PlanFirst, LLC are not affiliated.



Altrusa Int'l of
Laconia, NH, USA

Become a member!

*Join with others who are
creating better communities!*

www.altrusalaconia.org
altrusalaconia@gmail.com
Follow us on Facebook



Gilford Home Center
A SMALLER BOX WITH A BIGGER VALUE

gilfordhomecenter.com
603-524-1692
Hours, Mon. - Fri. 7:00 - 5:00
Sat. 8:00 - 3:00
Sun. 9:00 - 1:00



Mon.-Fri. 7:30-5:00, Sat. 7:30-3:00
and Sun. 7:30-1:00
gilfordtruevalue.com
603-524-5366



**LOVERING
AUTO GROUP**

Meredith



4.9

MISIASZEK
TURPIN



MISIASZEKTURPIN.COM

residential | non-residential | historic preservation

The Winnepesaukee Playhouse Presents
the Playhouse Professional Company in

SHOUT! The Mod Musical

Created by Phillip George & David Lowenstein
“Mod Musings” & “Groovy Gab” by Peter Charles Morris &
Phillip George
Orchestrations & Additional Arrangements by Bradley Vieth
Originally Directed Off-Broadway by Phillip George
Originally Choreographed Off-Broadway by David Lowenstein
Originally produced Off-Broadway in New York City by
Victoria Lang & P.P. Piccoli and Mark Schwartz

Developed in association with
Amas Musical Theatre, Donna Trinkoff, Producing Director

SHOUT! The Mod Musical
is presented through special arrangement with Music Theatre International
(MTI). All authorized performance materials are also supplied by MTI.
www.mtishows.com

Production Team

Director.....Timothy L'Ecuyer
Choreographer.....Ashley Meeken
Additional Direction & Choreography.....Juson J. Williams
Music Director.....Judy Hayward
Stage Manager.....Annie Jenkins
Scenic Designer.....Gwen Elise Higgins
Costume Designer.....Andrew Burns
Lighting Designer.....Libby Hinshaw
Sound Designer.....Thom Beaulieu
Additional Sound Engineering.....Christopher Renauld

Thank you to:
Lyvie Beyrent, Zach Glennon, New Hampton School

The Cast

Yellow Girl.....	Deijah Faulkner
Green Girl.....	Dwan Hayes
Red Girl.....	Sabrina Koss
Orange Girl.....	Kelsey McCollaum
Blue Girl.....	Emily Song Tyler

SHOUT! The Mod Musical
runs approximately 90 minutes with no intermission.

You are welcome to visit the bar before and after the performance. Please note, state liquor laws prohibit us from allowing you to bring alcoholic beverages to the amphitheatre. They must be consumed on the deck or in the picnic area. Thank you.

The Common Man Family — Setting the Stage for Uncommon Dining



Bay Point at Mill Falls • (603) 279-2253

theCMan.com



Church Landing at Mill Falls • (603) 279-5221



Chase House at Mill Falls • (603) 279-3003



OPEN MAY - SEPTEMBER! • (603) 279-3445

From The Winnepesaukee Playhouse Education Department...

Hello and welcome to *SHOUT! The Mod Musical!* You're in for a wonderful time listening to some great classics, many of which you'll already know by heart. *SHOUT!* is a rocking celebration of female empowerment in the 60s and a perfect way to start our outdoor offerings this summer. If this is your first time at our outdoor amphitheater, you're in for a treat. Live outdoor theatre has a history that spans centuries, captivating audiences in open-air settings and providing a unique experience combining nature and performance.

The roots of live outdoor theatre can be traced back to the earliest civilizations. Ancient Greece is particularly renowned for its contributions to the art form, introducing the theatrical festival known as the Dionysia in the 6th century BCE. This festival, held in honor of the god Dionysus, took place in large outdoor amphitheaters, such as the famous Theatre of Dionysus in Athens, where audiences gathered to witness performances of Greek tragedies and comedies. These open-air venues provided a space for communal engagement and allowed for integrating natural elements into the theatrical experience.

Jumping ahead, the Renaissance in England, during the Elizabethan era, marked a significant turning point in the history of theatre. London's Globe Theatre, built in 1599, became an iconic open-air playhouse presenting the works of William Shakespeare, which were often written with the outdoor venue in mind. Much of the audience, known as the groundlings, stood around the stage, uncovered from the weather. The dynamic interaction between actors and the audience, coupled with the open sky above, created a rich and immersive experience that is still cherished worldwide with popular Shakespeare in the Park programs.

In recent years, outdoor "site-specific" theatre has become very popular. In this style, performances are staged in unconventional locations, incorporating elements of the surrounding environment into the production. This approach creates a more intimate and interactive experience for the audience, embracing theatre's ephemeral nature, adding to its allure. Since the performances are designed specifically for a particular location and moment in time, it fosters a sense of exclusivity and excitement, as each performance becomes a unique event that can't be replicated anywhere else.

An outdoor theatre also provides a heightened sensory experience. The site's sounds, smells, and textures can be harnessed to create a multisensory tapestry that helps to immerse the audience in the world of the performance. The natural acoustics of a cavernous space might be utilized to amplify the emotions of a dramatic scene. The gentle rustling of leaves or the distant traffic noise can become part of the musical score. The rough texture of a weathered wall or the softness of grass underfoot can evoke a visceral connection with the environment.

Outdoor theatre transcends traditional boundaries and attracts diverse audiences, including many who may not see theatre regularly in conventional spaces. The communal experience of watching a play under the open sky connects us and reminds us of our shared emotions. It brings us back to our roots. It's the cavemen telling stories around the fire. It's the romantics like Wordsworth, Keats, and Shelly urging us to go "back to nature." And we go because we know that on any given night, we might catch the perfect sunset

going down over the stage or feel a breeze across our cheek just at the moment when the lovers meet. So, thank you for being here and taking part in this tradition. We hope you'll continue to come and support outdoor theatre in the beautiful Lakes Region and help us spread the word so that others can do the same.

--Cory Lawson

Director of Education and Community Engagement

Facts about my (Yellow's) love... Paul McCartney



Born: June 18, 1942

Hometown: Liverpool, England

Favorite Color: Blue (Soon to be Yellow!)

Favorite Food: Mashed Potatoes and Onions!
Yummmmmmm

The Beatles got the idea for their name from
Buddy Holly and The Crickets.

His Mom died at 14
Met John Lennon at 15 years old.
Dad Played Trumpet in a Jazz Band

(Yellow + Paul= FOREVER)

Paul was originally the lead guitar player for The Quarrymen but
started playing bass guitar when Stuart Sutcliffe quit the group.
(Good riddance).

April 4, 1964, The Beatles hold all top five spots on the Billboard
Hot 100... At the same time!! "Can't Buy Me Love," "Twist and
Shout," "She Loves You," "I Want to Hold Your Hand" (I'll hold
his hand!), and "Please Please Me" ...

At 8 o'clock on February 9th 1964 Beatles Played on Ed Sulli-
van...Soooo DREAMY.

Our Future Baby's Name: Sunny Yellow-McCartney.



Song List

Opening: Round Every Corner/I Know a Place

Talk About Love

I Only Wanna Be With You/Tell The Boys

How Can You Tell/Wishin' and Hopin'

One Two Three/To Sir With Love

Wives and Lovers (My Handsome Prince)

Don't Sleep in the Subway

Son of a Preacher Man

Coldfinger

You Don't Have to Say You Love Me

Winds of Change Medley

I Just Don't Know What to Do with Myself

These Boots are Made for Walkin'

I Couldn't Live Without Your Love

You're My World/All I See is You

Those Were the Days

Shout!

Epilogue: Pictures from the Past/Downtown

About the Authors

Phillip George West End/Off-Broadway: *West End Forbidden Broadway*, Meneir Chocolate Factory, *Missed Connections* (The Ohio Theatre), *Shout! The Mod Musical*, *Forbidden Broadway Alive and Kicking*, *Forbidden Hollywood*, *Lost in Utopia* (HERE Theatre), *Whoop-Dee-Doo* (Drama Desk Award, Best Musical Revue), *The Road to Qatar* (York Theatre Company), *Forbidden Broadway Cleans Up Its Act*, *Forbidden Broadway Strikes Back*, *Forbidden Broadway 2001: A Spoof Odyssey* (Drama Desk Award, Best Musical Revue), *When Pigs Fly* (as Assoc. Director to Mark Waldrop), *Miss Pretty Hard* (Dance Theater Workshop), *Forbidden Broadway 1988–93*. London: *Kean* (nominated for Evening Standard Award, Best Musical), *Forbidden Broadway* (The Albery), *Shout!*, *Frankly Scarlett*; *Listen to the Wind*, *Much Revue About Nothing*, *Forbidden Broadway*, *The Famous Five*, *The Arcadians*. Regionally: *Forum* (5th Ave Theatre, Seattle), *Best Little Whorehouse*, *Footloose*, *Return to the Forbidden Planet*, *Annie Get Your Gun*, *California Suite*, *American Waltz*, *Spontaneous Combustion*, *Vital Components*, *The Secret Garden* (Paper Mill). As a playwright he is currently hard at work on *Thrilling Pulp* and *The Wheels of Chance*.

David Lowenstein is the co-creator/choreographer of *SHOUT! The Mod Musical*, which ran in London, off-Broadway, on the Norwegian Cruise Lines, and plays in regional theaters across the country. Off-Broadway, David's choreography has been featured in the Drama Desk award-winning *Howard Crabtree's Whoop-Dee-Doo!*, *On A Clear Day You Can See Forever*, *Anything Cole*, and *Sing for Your Supper*. Regionally David directed *Damn Yankees*, directed/choreographed *The Great American Trailer Park Musical* and *My Mother's Lesbian Jewish Wiccan Wedding*, for The Finger Lakes Musical Theater Festival/Merry-Go-Round Playhouse. He staged *The Best Little Whorehouse in Texas* at the Gateway Playhouse, *The Merchant of Venice* at Syracuse Stage, as well as numerous productions in summer stock. On television he staged Vanessa Williams' "Christmas Special" for ABC. David directed *Berlin to Broadway*, *Seussical!*, *Kiss Me Kate*, and *Oklahoma!* for SU DRAMA and choreographed *Lucky Stiff* and *I Love You Because*. David is Artist in Residence at Cazenovia College where he directed/choreographed *Sweet Charity*, *Once Upon a Mattress*, *Oliver!*, *Seussical*, *A Christmas Carol*, *Bye, Bye Birdie*, *Grease*, *The Laramie Project*, *You're a Good Man Charlie Brown*, *The Sound of Music* (SALT Award – Director of the Year), *Dead Man Walking*, *Chicago*, *Godspell*, and *Our Town*. As a performer he has been part of 7 original Broadway casts and several off-Broadway, national touring, and regional productions. He has taught audition technique and theater dance for CAP 21/NYU and Le Moyne College. David is a full time Professor of Practice in the Musical Theater Program of Syracuse University's Drama Department. He graduated cum laude with a bachelor of fine arts degree in musical theater from Syracuse University.

PAVING OUR WAY TO THE FUTURE!



BETWEEN NOW AND SEPTEMBER 2024

the Winnepesaukee Playhouse needs to **raise \$200,000** for important improvements to our campus. Your generous donation will help us to resurface campus roadways and parking lots for a safer, more enjoyable theatre experience!

Donate online at www.winnepesaukeeplayhouse.org!

**THANK
YOU FOR
YOUR
SUPPORT!**

The Cast



Deijah Faulkner (Yellow Girl) is very excited to be a part of the Winnepesaukee Playhouse this season. Her favorite past credits include: Vanessa Rosales (*Inconvenient Miracle: Off Broadway*), Miranda (William Shakespeare's *The Tempest*), Nehebka (*Aida*), and Susan (*Tick Tick Boom*). Deijah studied Musical Theatre Performance and Costume Design at East Stroudsburg University where she received a BA. She wants to thank her mom & sister, her partner Devon, and her friends for always supporting her passions.



Dwan Hayes (Green Girl) is thrilled to be back at the Winnepesaukee Playhouse! A native of Winston Salem, North Carolina, she has a B.M. in Musical Theatre from the University of North Carolina at Pembroke. Regional: *Ghost* (Oda Mae Brown), *Saturday Night Fever* (Candy), *Jesus Christ Superstar* (Mary Magdalene), *Hairspray* (Motormouth Maybelle), *Our Town* (Mrs. Soames), *A Raisin in The Sun* (Lena Younger), *Smokey Joe's Cafe* (B.J.) Tours: *Buddy... The Buddy Holly Story* (Apollo Performer), *Harriet Tubman and the Underground Railroad* (Ms. Ross). She was also featured as a Supporting Vocalist backing Sam Smith at The 60th Annual Grammy Awards. Dwan would like to give special thanks to her family and friends for their love and support. www.dwanhayes.com, www.reachforit.net



Sabrina Koss (Red Girl) is beyond excited to be a part of this amazing summer season! Originally from New York, Sabrina is a graduate of Boston Conservatory's BFA Musical Theatre program. Recent credits include: *High School Play: A Nostalgia Fest* (Alley Theatre), *Madame Defarge* (Gloucester Stage Company), *Laughing Stock* (Barnstormers Theatre), *Tuck Everlasting* (Umbrella Stage Company), and *Grease, Catch Me If You Can*, and *The Pajama Game* at New London Barn

Playhouse, where she was nominated for a NH Theatre Award for her portrayal of Molly Aster in *Peter and the Starcatcher*. You can also see her as Lola in the feature film *About Fate*, now on Amazon Prime. Thanks to Mom, Dad, Mara, Jady, and Amy. Follow Sabrina at @sabinamkoss and sabinakoss.com. Enjoy the show!

GERMAN MOTORSPORTS

AUDI • VOLKSWAGEN • BMW • MERCEDES • MINI

Authorized BOSCH Service Center



(603) 524-5016



www.germanmotorsportsusa.com

The Cast



Kelsey McCollaum (Orange Girl) is thrilled to be making her Winnepesaukee Playhouse debut this season! Kelsey was last seen on *Law and Order's* episode *Black and Blue*. Some of Kelsey's favorite credits include *Merrily We Roll Along* (Mary Flynn), *Grease* (Jan), *Beehive* (Judy), *42nd Street* (Maggie Jones) in which she was a BroadwayWorld Award Winner. Kelsey would like to thank the Winnepesaukee team, the cast and crew, her agent Brian, and of course her parents, for following her to whatever state she is performing in and for their constant love and support. Enjoy the show!



Emily Song Tyler (Blue Girl) is thrilled to be a part of *Shout!* Select regional: world premiere of *Gold Mountain* (covering Ali Ewoldt, Utah Shakespeare Festival), *Cinderella* (Geva Theatre), *A Christmas Carol* (North Shore Music Theatre), *Water by The Spoonful* (Cygnet Theatre), *Hamlet* and *A Midsummer Night's Dream* (PA Shakespeare Festival), *A Chorus Line* (Broadway Palm) *You're A Good Man Charlie Brown* (Theatre Barn), *The King and I* (La Comedia).

National Tour: *Paw Patrol Live* (US and China). Film/TV: *Paw Patrol Live at Home* (Paramount+), "That Damn Michael Che" (HBO). Huge thanks to her agent Brian and much love to Mom, Dad, Jon, and Liz. Enjoy the show! @emilysongtyler

**THE
FITNESS
Edge**


WE OFFER
LIVE & ZOOM
CLASSES

BOOT CAMP PLUS | INDOOR CYCLING | TOTAL BODY TONE
BARRE | POSTURE | YOGA | ZUMBA | TRX AND MORE!

169 DANIEL WEBSTER HIGHWAY
MEREDITH NH

78 WHITTIER HIGHWAY
MOULTONBOROUGH NH

OFFERING NH LAKES REGION 2 CONVENIENT HEALTH CLUB LOCATIONS!



(603) 279-0411
WWW.THEFITNESSEDDENH.COM

Donations come in all shapes and sizes.

Please consider a gift from our Amazon Wish List.
www.winnepesaukeeplayhouse.org/amazon-wish-list

The Production Team

Andrew Burns (Costume Designer) is an upcoming third-year MFA Costume Design and Technology Candidate at the University of South Carolina. He graduated with his BA in Theatre from Florida State University in 2019 and continued to pursue theatre professionally post graduation. Andrew had the opportunity to work with the Cape Playhouse in Dennis, MA as a wardrobe apprentice for their summer 2019 season, and with Florida Repertory Theatre in Fort Myers, FL as a costume intern for their 2019-2020 season. He now attends the University of South Carolina under the mentorship of Kristy Leigh Hall and will obtain his masters degree in May 2024. Previous costume design credits include: *Wonderland* (Ballet), *Small Mouth Sounds*, *This is Our Youth*, and *A Connection is Made* choreographed by André Megerdichian (University of South Carolina), *Dog Sees God* (Out Front Theatre Company, Atlanta). He is excited to make his design debut at the Winnepesaukee Playhouse joining the team for three productions this summer. Special thanks to his family and friends for their love and support. Instagram: @a.burnscostumes

Melody Carter (Costume Assistant) is new to the Winnepesaukee Playhouse this year. The past several years they have been the wardrobe lead/stitcher at the Springer Opera House in Columbus, GA. She is also a student at Columbus State University. A few of her favorite shows that she has been involved with are *Cinderella*, *The Color Purple*, and *The Bodyguard*. She is very excited to share/learn in her first season with the Winnepesaukee Playhouse.

Francisco Fialho (Scenic Carpenter) is a newly graduated theatre technician/carpenter. Francisco has built a number of sets, previously working on shows in Keene State College as both a shop hand and run crew.

Judy Hayward (Music Director) holds a BFA in Piano Performance and a Master's degree in Arts Administration. She has music directed for numerous theaters, both professional and community, from coast to coast. In the Northeast, Judy has music directed for Winnepesaukee Playhouse, Seacoast Rep, StageCoach Productions, Actorsingers, Stoneham Theater (MA), among others. Judy received the NH Theatre Award for music direction for Winnepesaukee Playhouse's productions of *The Fantasticks!* and *Chicago*. In addition, she was music director for their productions of *Jesus Christ Superstar*, *25th Annual Putnum County Spelling Bee*, *Joseph... Dreamcoat*, *Godspell*, *Peter and the Starcatcher*, *Cabaret*, *High Society*, *Aida*, *Carrie*, *Urinetown*, and the holiday Pantos.

Gwen Elise Higgins (Scenic Designer/Scenic Charge Artist) is a multi-hyphenate theatre artist from the Midcoast of Maine working throughout New England. Graduated from University of New Hampshire with a BA in Theatre. A lifelong learner and artist experimenting in countless mediums with varying degrees of success and welcome failure. Painter, designer, actor, etc. www.gehiggins.com

Libby Hinshaw (Lighting Designer/Electrics Supervisor) is a recent graduate with a focus in lighting tech and design. She previously designed *After Jane* (Co-Designer), *Silent Sky*, *Los Vendidos*, and *Bamboo Box* at The Janet Kinghorn Bernhard Theater. Her assistant design credits at the JKB Theater include *Heddatron* and *The Sor Juana Project*. Some of her technical credits are *Rent* at A Contemporary Theater of Connecticut; *The Place That Made You*, *Eurydice*, *And Baby Makes Seven*, *The Chaparral*, *John Proctor is the Villain*, *Somewhere: A Primer for the End of Days*, *Springfest*, *Radium Girls*, *The Harvest*, and *The Hour We Knew Nothing of Each Other* at the JKB Theater. Libby holds a BS in Theater and a BA in Psychology from Skidmore College.

The Production Team

Annie Jenkins (Stage Manager) is happy to be working her first season with the Winnepesaukee Playhouse! New York credits include *First Daughter Suite* (The Public Theater); *Wolf in the River* (The Flea Theater world premiere); *Merrily We Roll Along, Swing!* (NYU Tisch New Studio on Broadway). Regional credits include *Disney's The Little Mermaid*, *Disney's Mary Poppins*, *King Lear*, and *As You Like It* (The Alabama Shakespeare Festival); *Gloria*, *Tigers Be Still*, and *Grounded* (Outpost Repertory Theatre). She is a graduate of the University of California at Irvine.

Ashley Meeken (Choreographer) is thrilled to return to the Winnepesaukee Playhouse this season! In 2019 she played Velma in *Chicago* earning a New Hampshire Theatre Award for Best Actress, in 2020 she played Soccer Mom in the Education Department's production of *The Wolves*, in 2021 she starred in the one-woman musical *Tell Me on a Sunday*, and in 2022 she played Nancy in *Lionel Bart's Oliver*. Ashley's training includes studying theatre and dance at the Walnut Hill School for the Arts in Natick, MA. Ashley earned her B.F.A. in Musical Theatre from the Cincinnati College-Conservatory of Music. Some of Ashley's professional credits include performing in the musical *Chicago* at the Edinburgh Fringe Festival in Scotland, singing with the Cincinnati Pops Orchestra on PBS, and performing at NYC's Lincoln Center. Ashley traveled the world as the company manager and principal singer for Jean Ann Ryan Productions on Norwegian Cruise Line and P&O Ventura Cruise Lines. Since returning back to NH, Ashley has performed with the Lakes Region Symphony Orchestra and played numerous roles locally. Her favorite roles include Dorothy Brock in *42nd Street*, Irene Molloy in *Hello Dolly*, Fantine in *Les Miserables*, Cassie in *A Chorus Line*, and the iconic role of Eva Peron in *Evita*. Ashley is the proud owner/director of The Studio at Meredith Bay, a center for dance and performing arts in Meredith, NH.

Natalya Salvati (Wardrobe Supervisor) is a senior attending the University of New Hampshire, double majoring in Design and Technology and Women's Studies. This is Natalya's first season with the Winnepesaukee Playhouse! Natalya's previous experience includes two summer seasons with Prescott Park Arts Festival (*Footloose* and *You're A Good Man Charlie Brown*) and Collegiate experience at UNH. The university experience includes stage managing for the UNH theatre department and theatre club: *Mask and Dagger* (*Roe*, *Anne of Green Gables*, *Hecuba*, *Tartuffe*, *She Kills Monsters*, *The Shaking Earth*), assistant stage managing at UNH (*Into the Woods*, *Hershel & the Hannukah Goblins*, and *We the People*), in depth costume based independent studies, costume design, wardrobe crew (*The Odyssey*), and carpentry. Natalya is very excited about the opportunity to wardrobe supervise and work with all of the different casts and creative teams!

E. Wilson (Audio/General Technician) is an audio technician based out of Atlanta. Elijah learned how to do theatre from the excellent Gainesville Theatre Alliance, a joint program between Brenau University and The University of North Georgia, and their mentor Stuart Beamen. In their off time, Elijah enjoys reading, listening to music and walking through nature.

Nick Winkler (Props Supervisor) is thrilled to be joining as the props supervisor at the Winnepesaukee Playhouse this season. Previous experience includes prop master for *Alice and Wonderland* and *The Enlightenment of Percival Von Schmutz* at Adirondack Theatre festival. Other prop coordinator credits include *Significant Other*, *She Loves Me*, *The Nutcracker Ballet*, and *Proof*.



The Winnepesaukee Playhouse Education Department promotes the developmentally appropriate acquisition of theatrical skills, fosters a life-long appreciation of the technique, history, and literature of theatre and its ancillary fields of study, and—above all—seeks to inspire its students to use theatre as a tool to develop empathy, with which they may explore and come to better understand the world.



Educational Programming at the Winnepesaukee Playhouse includes:

- Four fully realized productions annually for students ages 8-18
- Summer camps for students ages 5-12
- Focused summer training for students ages 13-18
- Classes and workshops for participants of all ages
- Post-performance talkbacks
- The Symposium Series
- Backstage tours
- Informative articles in playbills
- Teacher training
- College internships
- Theatre and arts education advocacy



For more information...

winnepesaukeeplayhouse.org/education

education@winniplayhouse.org

Permanent Staff

Thom Beaulieu (Managing Director/Sound Designer) is pleased to be a part of the staff at the Playhouse. An award-winning lighting and sound designer, Thom holds a BFA in Drama from Carnegie Mellon University's School of Drama, as well as an MS in Physics from Georgia State University. He enjoys golf, boating, and poker, and lives in New Hampton with his wife Meredith and daughter Molly.

RJ Bogues (Assistant Technical Director) is excited to be here for his first season as an ATD, as well as his third season at the Playhouse. He is a WCSU alumni originally from small town New Fairfield, CT. He has worked previously as a carpenter in UBU at WCSU, *Spamalot* at Musicals at Richter, and *Godspell* at ACT of CT, with some small technical director credits in *Shrek the Musical* at Musicals at Richter, and *The Nightman Cometh* at CCSU. Randal has also acted on occasion, appearing in shows such as *Glorious!* (Bellhop 1) in the Playhouse's 2021 season. He thanks you for coming, and hopes that you will enjoy what the Winnepesaukee Playhouse's 20th Season has to offer!

Amanda Dickinson (Production Manager) came to the Playhouse from a background in healthcare, having practiced medical Speech-Language Pathology for 18 years. She holds a Bachelor of Science in Speech and Hearing from Elmira College in New York, and a Master of Science in Speech-Language Pathology from The MGH Institute of Health Professions in Boston. After joining the Playhouse in 2017 as a community theatre actor, Amanda went on to work with the Professional Company and the WP Education Department, while also serving for five years on the Winni Players Community Theatre steering committee. Favorite Playhouse credits include *M*A*S*H* (Bridget), *Company* (Assistant Stage Manager), *Steel Magnolias* (Producer, Properties Coordinator), *The Complete Works of William Shakespeare (Abridged) [Revised]* (Wardrobe Supervisor/Running Crew), *The Wolves* (Stage Manager), *Oedipus Rex* (Stage Manager), and *[title of show]* (Stage Manager). Amanda joined the permanent Playhouse staff as Production Manager in 2023.

Donna Findlay (Bookkeeper) joined the Playhouse in 2015 after retiring from a 21 year career at a public utility in Manchester, NH and spending 5 years as a para-educator in the Inter-Lakes School District here in Meredith. She gives unending love and gratitude to Jim, Cortland, John, and grandson Jimmy.

Matthew Hutchens (Technical Director) started at the Winnepesaukee Playhouse originally as a carpenter for 2021 season. He has stuck with us since then as the assistant technical director for 2022 and is now the technical director for 2023. Matthew's goals, as the technical director, are to teach others while also creating beautiful sets for the stage. This will be his first full season as a TD.



Permanent Staff

Cory Lawson (Director of Education and Community Engagement) is a professional actor, director, and theatre educator. He is currently working on his dissertation for his Ph.D. in Interdisciplinary Fine Arts at Texas Tech University, where his research is in theatre festivals and devised works. He has devised and performed in several shows with the Dutch theatre company Orkater, both in Amsterdam and New York City. Cory has also created work with The Living Theatre and helped to found Ready Set Go Theatre, which created the world's first Shakespeare Webisodes. As an actor and director, Cory's work has been seen professionally in New York as well as in regional theatres across the country. He has also appeared on screen in national commercials and various television episodes. Cory holds his MFA in acting from The New School for Drama and a BA in Theatre: Performance and Dramaturgy from Roanoke College. He has served as the Associate Director of Education and Outreach at the Alabama Shakespeare Festival, the Artistic Director of The Burktech Players (a neurodiverse theatre company in Lubbock, Texas), and the Director of The Wallace Weekend Players in Levelland, Texas. Most recently, Cory co-founded and served as the Artistic Director of The Outside In Festival, a new nonprofit Theatre Festival showcasing devised works through the fostering and presentation of both national and international artists. He's thrilled to join the leadership team at the Winnepesaukee Playhouse and is looking forward to meeting and working with everyone in the community.

Timothy L'Ecuyer (he/him/his) (Artistic Director/Director) is thrilled and grateful to begin a new chapter at the Winnepesaukee Playhouse, having previously served as Director of Education from 2014 to 2022. His directing credits at the Playhouse include *The 39 Steps*, *Red, Grace and Glorie*, *A Midsummer Night's Dream*, *The Rocky Horror Show*, *Mary's Wedding*, *California Suite*, *The Complete Works of William Shakespeare (Abridged) [Revised]*, and fourteen productions with the Education Department. Mr. L'Ecuyer has BAs in theatre and English from Keene State College as well as an MA and MFA in theatre education and applied theatre from Emerson College. He is a former president of the New Hampshire Educational Theatre Guild, an Equity stage manager, and a Teaching Lecturer in the Music, Theatre and Dance Department at Plymouth State University, where he directed *Our Town*, *An Enemy of the People*, *The Curious Incident of the Dog in the Night-Time*, and *Urinetown*. He has worked with many New Hampshire and Boston area theatres including American Stage Festival, Barnstormers, theatre KAPOW, Peacock Players, StageCoach Productions, Greater Boston Stage Company, the Nora Theatre Company, and Underground Railway Theater. He would like to thank his parents, Peter and Linda L'Ecuyer for (among many other things) supporting the Playhouse in NH Gives this year. He'd also like to thank the following people for their support: Gail Barrett, Laurie Felgate, Daniel Patterson, Mike Richardson, Sharon and Terry Richardson, Renée Speltz, Thomas Staley, and Laura Stephan. timothylecuyer.com

Lesley Pankhurst (Patron and Company Services Director) is one of the founders of the Winnepesaukee Playhouse. Lesley is a graduate of Wellesley College with an MA in Arts Administration and Cultural Policy from Goldsmiths College, University of London. In addition to serving as the Marketing Director of the Playhouse for its first 13 years, she has also designed costumes for many of its productions and has twice been the recipient of the NH Theatre Award for Best Professional Costume Design for *Two Rooms* (2007) and *The Glass Menagerie* (2008). She is the proud mom to her daughter, Sophie, cat Sasha, and wife to the proudly retired Neil. Much love and appreciation to Lyn Osborne Winter.



Melcher & Prescott

INSURANCE

KNOWLEDGE. TRUST. CONFIDENCE.



Since 1862 Melcher & Prescott Insurance has been a proud sponsor of the arts and culture in our community.

Our local professional staff are here to assist you with all your insurance needs including homeowners, automobile, watercraft, business and employee benefits.

We work closely with our clients to secure the proper coverage at the best price!

www.melcher-prescott.com | insure@melcher-prescott.com | 603-524-4535



Best Insurance Company

This is what retirement looks like.




An active community of friends is
waiting for you at Taylor.

Taylor Community is located in the beautiful Lakes Region of New Hampshire with campus locations in both Laconia and Wolfeboro. Finding a home at Taylor means more than access to a stunning new cottage or apartment - it means receiving the keys to present and future peace of mind.

Whether you prefer an active lifestyle filled with fitness classes and an extensive lineup of social and recreational opportunities, or would rather enjoy a fine-dining experience with friends after a day spent by the lake...

Taylor is the place for you!



 (603) 366-1400 / taylorcommunity.org
A not-for-profit since 1907

Discover Taylor Community
taylorcommunity.org

Laconia
435 Union Avenue
Laconia, NH 03246

Wolfeboro
83 Rolling Wood Drive
Wolfeboro, NH 03894



THE SOUNDTRACK OF THE LAKES REGION!

The community we service is the community we support.

We thank our local communities for trusting us to be there when they need us, and are proud to do our part in supporting them.



Reliable Deliveries | Responsive Service


www.deadriver.com



NEW
HAMPTON
SCHOOL

Where Aspiring Artists **TAKE CENTER STAGE**

Whether the arts are a passion or a hobby, there are ample opportunities for professional-level learning at New Hampton School. From the stage to the recording studio, at the ceramics wheel or in the animation lab, our students create in every corner of campus.

 www.newhampton.org





THE WINNIPESAUKEE PLAYHOUSE EDUCATION DEPARTMENT

THEATRE CAMP

FOR AGES 5-14

2023 IS...

THE SUMMER OF THE RIDICULOUS

JOIN US FOR AN UNFORGETTABLE SUMMER!

Students in the Winnepesaukee Playhouse's 2023 Summer Theatre Camp will collaborate creatively, play games, make art, explore music and movement... all while creating and staging original stories celebrating the GOOFY, the SILLY, the NONSENSICAL, and the WACKY. Join us for the SUMMER OF THE RIDICULOUS!



 PECULIAR PEOPLE <small>(July 10 - 14)</small>	 ABNORMAL ANIMALS <small>(July 17 - 21)</small>	 STRANGE SITUATIONS <small>(July 24 - 28)</small>	 QUIRKY QUESTS <small>(July 31 - August 4)</small>	 IMPOSSIBLE INVENTIONS <small>(August 7 - 11)</small>	 UNUSUAL UNIVERSE <small>(August 14 - 18)</small>
---	---	---	--	---	---

CAMPS 1 & 2

STUDENTS AGES 5-11 (ENTERING GRADES K-5)

FULL-DAY, ONE-WEEK SESSIONS DATES AND THEMES

Week 1:	July 10 - 14	"Peculiar People"
Week 2:	July 17 - 21	"Abnormal Animals"
Week 3:	July 24 - 28	"Strange Situations"
Week 4:	July 31 - August 4	"Quirky Quests"
Week 5:	August 7 - 11	"Impossible Inventions"
Week 6:	August 14 - 18	"Unusual Universe"

THE UPPER CAMP

STUDENTS AGES 12-14 (ENTERING GRADES 6-8)

FULL-DAY, TWO-WEEK SESSIONS DATES AND THEMES

Weeks 1 & 2:	July 10 - 14 & July 17 - 21	"Peculiar People" & "Abnormal Animals"
Weeks 3 & 4:	July 24 - 28 & July 31 - August 4	"Strange Situations" & "Quirky Quests"
Weeks 5 & 6:	August 7 - 11 & August 14 - 18	"Impossible Inventions" & "Unusual Universe"



NEW
HAMPTON
SCHOOL

We are delighted that our camp program will once again be located on the beautiful campus of New Hampton School at 70 Main Street in New Hampton, NH

REGISTER ONLINE TODAY

Visit us at winnepesaukeeplayhouse.org/education or Scan this Code!
 Questions? education@winnipplayhouse.org / 603-279-0333



Not a School-Sponsored Activity



A FULL SERVICE LAW FIRM

Estate Planning and Probate
Business & Non-Profit
Real Estate
Employment & Labor
Municipal

Land Use & Development
Telecommunications
Litigation
Environmental
Utility

COUNSELING INDIVIDUALS, BUSINESSES,
ORGANIZATIONS AND MUNICIPALITIES
THROUGHOUT NEW HAMPSHIRE

DONAHUE, TUCKER & CIANDELLA, PLLC

**PROUDLY SUPPORTING THE ARTS
FOR OVER 30 YEARS**

OFFICES IN MEREDITH, CONCORD, PORTSMOUTH, & EXETER, NH

WWW.DTCLAWYERS.COM

1-800-566-0506

Thanks

*Thank you for recognizing that art matters.
It takes everyone working together to continue to create great theatre.*

Directors' Circle

\$25,000+

Anonymous
Anonymous
Paul and Sharon Steinwachs

\$10,000+

Anonymous
The Baker Family
Beth and Rich Compson
Richard and Carol Gerken
Jodie Herbert and Rusty McLearn
NH Charitable Foundation
New Hampshire State Council
on the Arts
Anita E. Springer
The Shubert Foundation

\$5,000+

Meredith Rotary
Laura and Gary Stephan

\$2,500+

Gloria and Irving Fox
Ellie Gordon
Greater Lakes Region
Children's Auction
Catherine Mann
Ambassador Paul Speltz and
Renee Speltz
John & Muff Walker

\$1,000+

Anonymous
Ray and Karen Abramson
Marc and Carol Bard
Eden and Nate Bowditch
Mike and Lisa Brien
Jim and Leslie Chapman and Meredith
Whole Living Center
Judy Cookman
Ray Craigie and Pam Smarling
Chuck and Diane Fray
Liz and Bob Gabel
James Whittredge Hill
David and Joanne Jeannette
Gerald Kadish
John and Margie Kreidler
Louise and Sandy McGinnes
Susan and Douglas McLane
Sharon and Tom Messmore
Debra Nash
Kate O'Brien
Neil and Lesley Pankhurst
Barbara Pitsch
John and Cleo Robbins
Jim and Judi Rogato
Jason and Deanne Sargent
Carolyn S Scattergood
Graham and Julia Thomson
Barbara and Gordon Webb
Whitney Werner
Barbara Zeckhausen

to YOU!

Actors' Circle

\$500+

Michael Ames/Half Moon
Enterprises, Inc
The Denny Knight Family
Fund of the Princeton
Area Community
Foundation
Kelly Dunn
The Findlay Family
John and Carol Ford
David and Patricia Immen
Paul and Beverly Jaques
Barbara & Chris
Maciejewski
Joan and David Martin
Maurice and Rhoda Miller
Endowment Fund
New Hampshire Center
for Nonprofits
Charles Robert and
Eileen Pettie
Mark and Susan Primeau
Gil Schohan
Robert and Anne Shaw
Judy and Steve Siegel
David Stamps and
Judith Buswell
Bruce and Betsy Thomas
Annie and Chris Weinmann
Mr. & Mrs. Brian Winslow

\$250+

Anonymous
Anonymous
Tom and Patricia Barrick
Linda and John Browne
James Burke
Bob & Elaine Carangelo
James and Bonnie Doherty
Robert and Eileen Gosselin

Don and Lou Ann Harris
Elizabeth Immen
Joseph Kelaghan
Kathleen Lyons
Ann McClellan
Alan and Carol Metevia
Kaitlin O'Neil
Rosemary Pizzuti
Deborah Seid and
Tom Green
Edward Sonn and
Sharon Forde
Jacqueline Truesdale
Deborah & Paul Walker
Mark and Kathleen
Whitehead
Gregg Williams

\$100+

Anonymous
Anonymous
Anonymous
Anonymous
Amazon Smile Foundation
Christine and Carlos
Anderson
Lisa Baroody
Chuck and Sue Bates
Thomas Bengston
David Berard
George Berman
Martin Berman
Roger and Deborah Blake
Tony and Terri Bouchard
Steve and Judy Brown
Jay Buckley
Sarah Bunkley and
Richard Smith
Alison and Christopher
Casko

Elizabeth Chambers
Jean and Don Clarke
Robert Connors
Abraham and Lynn T.
Dadian
Cara David
Constance Dehnel
Amanda Dickinson
Diane G. Dion
Martha Dolben
Ann Donahue
Tami and Mark Donohoe
Carol and Robert Doretti
Denise Doyle
Georgene Fabian
Andrew Fleischmann
Lisa Furlong
Susan Gaines
Dana and Sherry Gardner
Jamie Gegerson
Leo Glasheen
Jean Halfmann
J William Harris
Ira and Lynn Keltz
Bernice and Bernie Kramer
Nancy Kubecka
Maureen Kuharic
Nancy and Newbold LeRoy
Lisa Lovett
John and Carol Low
Peter and Maryann Magoun
Bob Maloney and
Bonnie Hunt
Jonathan Marro
William and Stefanie Marsh
Dr. Warren & Annette
Mason
Greg & Regis Miller
Peg and John Mongiello
Dr. Noe
Martha Oberstein
David and Fredda Osman

Actors' Circle (continued)

Charlotte Otto	Katie Guilmett	Rachel Chiffer
A Parnes	Betty Heaney	Margaret Christ
Daniel Patterson	Andrew Hendrick	Paul Ciborowski
Celine Perron	Andrea Houghton	Kenneth Cohn
Mark Pettie and Sue Molitor	Gary Jesseman	M Katherine Collins
John and Dorothy Piquado	Constance Kuekan	Gay Daigle
Walter and Christine Powers	The Leighton Family	Robert Davies
Gail Putnam	Marilyn Lezberg	Alexander Davis
Sharon Richardson	Charlene Malek	Beth Day
The Rickenbachs	Jessie Marden	Jack Degange
Mary and Dave Rogers	Monica Michalsky & Tom Stankosky	Rick and Harriet DeMark
Joe Sampson	Sean and Helen Murphy	Gary and Lisa DiMartino
John Soha	Savannah Muzzey	Jean Etter
Larry Spencer	Antoinette Olden	Laura Felgate
Amy Staley	Francis Page	Lisa Fuellemann
Judith Stern	Andrew Pinard	Christina Fuller
Samantha Tella	Michael Portrie	Zach Glennon
Joyce Tyler	Dennis and Kerry Schneider	Sandra Greenberg
Barbara Ulm	Steven B. Schwartz and	Jessica Haggett
John and Karen Warren	Paula A. Leonard-Schwartz	Eric Halvorson
David Wilder	Chris Slater	Hannaford Community Bag Program
Hazel Zimmer	Keith Stevens	Judy Hayward
	Sara Tirrell	Susanna High
	Lindsay Weiner	Anne Ingard
	Tim and Anne Whiting	Amanda Jennison-Sousa
	John and Karen Yeigh	Eliot Johnson
		Chris Jones
		Valerie and Karl Kimball
		Lynn Kirk
		Daniel Klingenstein
		Thad Long
		Ginnie Lupi
		Cassandra Mason
		Deirdre A Meehan
		Michelle Minot
		Richard Mogavero
		Suzanne Morrissey
		Karen Perlow
		Margaret Phelan
		Roger Pinsonneault
		Janet Pratt
		Marta Rainer
		Elizabeth Ricci
		Ulysses Roebuck
		Scott Rosenthal
		David and Christine Roy
		Stuart W Russell Jr
\$50+		
Donna Acox		
Marcy Alkalay		
Kay Anderson		
Andy Bedford		
Karen and Paul Bemis		
Barbara and Charles Birdsey		
Nancy Brennan		
Matt and Carey Cahoon		
The Cottages of Wolfeboro		
Judith Dean		
Alexa Dembiec		
David Ellis and Lee FayEllis		
Carolyn & Ken Filpula		
Bob Foster and Mike Gillis		
Mark and Linnea Fraser		
Elizabeth Geiler		
Casey and Drew Gerken		
Bryan Graf		
Rebecca Gregoire		
	<i>All Other Gifts</i>	
	Anonymous	
	Anonymous	
	Carolyn Ames	
	The Andrews Family	
	Catherine Asmar	
	Arnold Benson	
	Roberta Brayer	
	Catherine and Paul Breen	
	Lindsey Bristol	
	Kim Bruneau	
	Janice Cardarelli	
	Nancy Carsen	
	Susan Cassidy	
	Ken Chapman and Carol Lowden	
	Bill Charles	

Robert and Margie Sallies
 Mary Sampson
 Angela Santamaria
 Janine M. Schifino
 John and Linda Shelley
 Jennifer Simon
 Lori Smock-Joyal
 Evan Sohm
 Nancy Stone
 Paul Sullivan
 Kathleen Sweeney
 Clayton Titus
 Sharyn Tondel
 Christa Tsechrintis
 Cynthia Unangst
 Marie Valliere
 Patricia Weston
 Naomi Wheatley
 Shelley Wieler
 Lowell Williams
 Pamela Williams
 Lorna Zammett

*Donation list dated
 6/8/22-6/7/23*

**Thank you to the
 following donors who
 have sponsored new
 chairs for the
 amphitheatre!**

Barbara and Charles Birdsey
 Eden and Nate Bowditch
 Mike and Lisa Brien
 Steve and Judy Brown
 The Cottages of Wolfeboro
 Alexa Dembiec
 James and Bonnie Doherty
 Ann Donahue
 Kelly Dunn
 Dawson Ellis and
 Delaney Andrews
 Chuck and Diane Fray
 Liz and Bob Gabel
 Richard and Carol Gerken
 Rebecca Gregoire
 James Whittredge Hill
 Charlene Malek
 Jessie Marden
 Sean and Helen Murphy
 Savannah Muzzey
 Kaitlin O'Neil
 Charlotte Otto
 Neil and Lesley Pankhurst
 Carolyn S Scattergood
 Chris Slater
 Ambassador Paul Speltz and Renee Speltz
 Monica Michalsky & Tom Stankosky
 Lydia and Nathan Torr



**Sponsor a *NEW*
 Amphitheatre Chair!**

John & Muff Walker
 Barbara and Gordon Webb
 Mr. & Mrs. Brian Winslow
 John and Karen Yeigh
 Barbara Zeckhausen
 Wellesley College Theatre

Morgenstern Sustainers

Anonymous
 Anonymous
 John and Linda Browne
 J.W. Hill, Consultant
 Sarah Bunkley and
 Richard Smith

Alison and Christopher Casco
 Katie Guilmett
 Ira and Lynn Keltz
 Susan and Douglas McLane
 Kaitlin O'Neil
 Joe Sampson

Jason and Deanne Sargent
 Mary and Dave Rogers
 Graham and Julia Thomson
 John and Muff Walker
 Barbara and Gordon Webb
 Brian Winslow

These are people who participate in the
 continued success of the Playhouse through their recurring
 gifts, and we are so grateful for the ongoing support.

We appreciate your support!

Did you know that in typical years ticket sales only account for about 50% of what it takes to run the Winnepesaukee Playhouse?

Sadly, these have not been typical years recently. But patrons just like you have been so supportive and generous. No gift to the Playhouse is too small, and every donation helps us keep artists employed and audiences entertained throughout the year. If you would like to become a donor, or make an additional donation, your tax-deductible gift will be instrumental in helping to ensure the Playhouse can continue to provide the level of programming you have come to expect.

You can make a donation today by visiting the box office, calling us at (603) 279-0333, or visiting our website: www.winnepesaukeeplayhouse.org

Is it time to take your involvement to the next level?

- You could make a one-time gift of \$100
- Join the Morgenstern Sustainers with a monthly gift of \$10
- Join our Directors' Circle at \$1,000 a year (\$85/month)

You can be the one to inspire, engage, and entertain the community by making a tax-deductible gift. You can mail us a check, use your credit card online or over the phone, or stop by the box office today.

There are even more creative ways to support the Winnepesaukee Playhouse!

Have you ever considered including the Winnepesaukee Playhouse in your will? A gift through your will or estate plan enables you to support our mission and make a difference in the future of the Winnepesaukee Playhouse. Did you know you can use your IRA required minimum distribution to make a tax-free donation to a non-profit like the Winnepesaukee Playhouse? Questions? Speak with your financial advisor, or contact Thom Beaulieu at 603-279-0333 or thom@winniplayhouse.org.



Logos
Branding
Graphic Design & More

LogoFurter.com

ted@logofurther.com

603.562.6909



JOE WALKER
Marketing Services

"Vision without action is a daydream.
Action without vision is a nightmare."

-Japanese Proverb

Does your business have vision?

- Strategic business plan development
- Promotional / advertising plans
- Marketing plans
- Non-profit fundraising plans
- Presentations / guest speaking

JoeWalkerMarketing.com
info@joewalkermarketing.com
603-731-0693

Franchisee
Call 603-369-4376
to advertise.



CHRISTOPHER P. WILLIAMS ARCHITECTS, PLLC

PO Box 703 • Meredith, NH 03253 • 603-279-6513
www.cpwarchitects.com



Our award winning firm has provided innovative and environmentally sensitive design solutions since 1984. We specialize in sustainable building practices and offer expertise in incorporating green systems into client projects to enhance and protect the ecosystem, and conserve natural resources. We strive to design buildings that fit into their cultural context and environment.



MIRACLE FARMS

LANDSCAPE CONTRACTORS

Moultonborough, New Hampshire (888)288-8252



Extraordinary landscapes begin here!

Landscaping

Maintenance

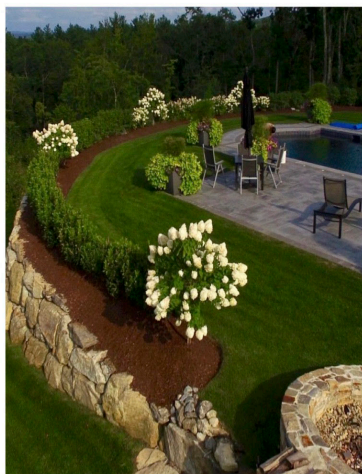
Hardscapes

Mulch/Loam/Compost

Firewood Dry/Green

603-253-9292

www.miraclefarmslandscaping.com



The Winnepesaukee Playhouse is grateful to the following foundations for their support.



STEINWACHS FAMILY
FOUNDATION



New Hampshire
State Council on the Arts



NEW HAMPSHIRE
CHARITABLE FOUNDATION

The Winnepesaukee Playhouse is supported in part by a grant from the New Hampshire State Council on the Arts & the National Endowment for the Arts.

Our Real Estate Goals are simple....

They're Yours!



Scott Knowles

603.455.7751

scottknowles@metrocast.net

Chris Adams

603.393.7993

adamschris195@gmail.com

Chris Kelly

603.677.2182

chriskelly@baysidenh.net



We have everything you need in real estate

208 Daniel Webster Highway, Meredith, NH 03253

(603) 279-0079

604 Main Street, Laconia, NH 03246

(603) 527-8200

www.baysideplatinumgroup.com





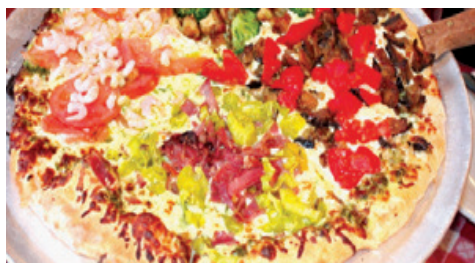
20th Season Gala

The Winnepesaukee Playhouse
20th Season Gala
Saturday, September 30th, 2023
5:30pm

Join us for dinner and a
performance celebrating
20 years of theatre that
inspires and entertains!

Tickets available at www.winnepesaukeeplayhouse.org

Very Music Very Italian & Very Good!



**Celebrating
34 Years!**

Giuseppe's *Pizzeria & Ristorante*



**This unique and popular restaurant is
one of the Lakes Region's most loved since 1989!**
Serving Award-Winning Gourmet Pizza, Pasta, Seafood,
Steak, Chicken, Veal, Vegetarian, Vegan, Gluten-Free,
Soup, Salads, Desserts, Cappuccino,
Beer, and a fabulous selection of Wine and Spirits!

Lunch and Dinner Daily

Reservations are highly recommended and greatly appreciated!

Located on the corner of Routes 3 & 25
Mill Falls Marketplace, Meredith, NH

**Call (603) 279-3313
For Reservations & Take Out
Visit giuseppesnh.com**



**LAKES REGION
COMPUTER**

Celebrating 25 Years in Business!
A ONE STOP TECH SHOP

Apple • PC • Verizon • Repairs
IT Business Services

Visit Our Retail Store!

- Verizon Authorized Retailer
- Apple Premium Service Provider
- Selling Apple, PC, Phones & Accessories
- Phone and Computer Repairs

IT Business Services Include:

- Computer Systems and Network Installations
- Systems Monitoring and Management
- Backup and Disaster Recovery
- Security and Compliance
- Cloud Solutions
- IT Inventory and Planning
- On-Site and Remote Support
- Wireless Network Planning and Installations
- Security Camera Installations
- Nextiva Business Phone Systems

12 Main Street, Center Harbor, NH 03226

Phone: 603.253.9847 • Website: lakesregioncomputer.com

Follow us!  [lakesregioncomputer](https://www.instagram.com/lakesregioncomputer)  [lakesregioncomputer](https://www.facebook.com/lakesregioncomputer)