

EDUCATION  
the  
WINNIPESAUKEE  
playhouse  
DEPARTMENT

20<sup>TH</sup> SEASON  
CELEBRATION

THE Winni  
PLAYERS



# Fiddler on the Roof

Book by Joseph Stein  
Music by Jerry Bock  
Lyrics by Sheldon Harnick

NOVEMBER 8-12

[winnepesaukeeplayhouse.org](http://winnepesaukeeplayhouse.org)

603.279.0333 | 33 Footlight Circle, Meredith NH 03253



# Meredith Marina

603.279.7921



Scan Me  
for  
Directions!

## BOAT RENTALS

& Jet-Ski  
Rentals



Water-Ski  
& Tubing  
Packages  
Available!

*Make A Splash!*



One of the largest  
**BOAT RENTAL FLEETS**  
on Lake Winnepesaukee!



### NEW & USED BOAT SALES

*Hurricane*

*tige*  
BOATS

*Sweetwater*

*Sanpan*

*Aqua Patio*

*Premier*  
Pontoon

MARINE STORE & BOATING ACCESSORIES

603-279-7921



**BOAT SALES • BROKERAGE • VALET • SERVICE • RENTALS • STORAGE**

2 Bayshore Drive, Meredith, NH • Meredith Bay • Lake Winnepesaukee



**Meredith  
Marina**

**www.meredithmarina.com**

*Board of Trustees*

Renee Speltz  
Chair  
Retired Mental Health Counselor and  
Consultant

Bill Bald  
Vice Chair  
President  
Melcher and Prescott Insurance

Raymond Abramson, CPA  
Treasurer  
Owner  
Abramson & Company, LLC

Kaitlin M. O’Neil  
Secretary  
Attorney  
Normandin, Cheney & O’Neil, PLLC

*Members at Large*

Eden Unger Bowditch  
Author and Lecturer  
Plymouth State University

Julie Hirshan Hart  
Editor  
The Laconia Daily Sun

Lesley Pankhurst  
Co-Founder and Patron and  
Company Services Director  
The Winnepesaukee Playhouse

Sean C. Sullivan, CPA  
Business Consultant

Kathleen Sweeney, CPA  
Owner  
Kathleen Sweeney CPA

Julia Thomson  
Legal Consultant

Brian Winslow  
Director of Community Relations  
Granite VNA



Permanent Staff

Artistic Director.....Timothy L’Ecuyer  
Managing Director.....Thom Beaulieu  
Patron & Company Services Director.....Lesley Pankhurst  
Dir. of Education & Community Engagement.....Cory Lawson  
Production Manager.....Amanda Dickinson  
Technical Director.....Matthew Hutchens  
Assistant Technical Director.....RJ Bogues  
Bookkeeper.....Donna Findlay

*The Winnepesaukee Playhouse  
has many volunteer  
opportunities. To find out how  
you can become a volunteer,  
contact us at  
info@winnipplayhouse.org*

*Proud Members of*

NEW HAMPSHIRE

**PROFESSIONAL THEATRE**

ASSOCIATION

WWW.NHPTA.ORG INFO@NHPTA.ORG

The Winnepesaukee Playhouse  
33 Footlight Circle, Meredith NH 03253  
Tel. (603) 279-0333

**www.winnepesaukeeplayhouse.org**

# For Your Information

**Please** turn your cell phone and any other electronic devices completely off. Leaving them on silent or vibrate may interfere with our communication systems and interrupt the flow of the performance.

**Please** refrain from photography or recordings of any kind, as this violates our royalty agreements.

**Please** note that if you must, in an emergency, use the restrooms during the performance, our House Manager will return you to your seat at an appropriate break in the performance.

**Please** be sure you can hear us! For our theatre patrons who have experienced varying degrees of hearing impairment, please take advantage of our state-of-the-art **Assisted Listening System**.

*For indoor performances:* If you are a hearing aid user who has a tele-coil function in your hearing aid you will be able to access our system directly after turning on that function. You may need to contact your hearing aid provider to inquire about the tele-coil in your particular hearing aid and ensure that it has been activated and instructed on how to turn it on when you are in the theatre. For patrons without tele-coil hearing aids, we have a limited number of headsets available on a first-come, first-served basis. Please see the box office if you would like to use one.

The indoor Assisted Listening System is made possible by a generous donation from The Maurice and Rhoda Miller Endowment Fund.

*For outdoor performances:* All actors will be amplified. If you'd like further amplification, headsets are available on a first-come, first-served bases from our reception table.

**Please** keep in touch! Visit our website at [www.winnipesaukeeplayhouse.org](http://www.winnipesaukeeplayhouse.org) to join our email list. You can also follow us on Facebook, Instagram, and Twitter.



## Dear Friends:

On behalf of Managing Director Thom Beaulieu, myself, and everyone at the Winnepesaukee Playhouse, thank you for joining us for our 20th season! All three departments of the Playhouse—professional, community, and education—have fantastic things planned for 2023 and I am honored to have the privilege of helping to shepherd all of them to the stage in my first season as Artistic Director.



Marking our 20th season is an opportunity for all of us to reflect on the path that brought us here. It would be impossible for me to do so without mentioning the deep gratitude I have for the unflagging effort of my predecessor, Founding Artistic Director Neil Pankhurst. Working with him for the past nine years has prepared me to step up into this position in a way that nothing else could. I am additionally grateful for his continued support and can't wait to welcome him back to write and direct this year's holiday Panto *Cinderella*.

This season revives some Playhouse favorites: American classics, a smash hit ABBA jukebox musical, the poignant story of the friendship between a pig and a spider that many of us grew up loving, and more. It also honors and extends the Playhouse's long-standing tradition of bringing you an exciting variety of work transcending time, geography, and genre. Bringing all of this to life for you are talented teams of theatre artists, some of whose work you already know and love as well as extraordinary professionals, students, and community members sharing their work with us for the first time.

An anniversary like this is also an opportunity to turn our eyes to the future and think about what might be. This year's transitions in leadership, particularly the addition of Amanda Dickinson and Cory Lawson to our staff, have already had invigorating effects. In the coming months and years, we will also shake out the cobwebs by bringing you new programming, new initiatives, and new ways of bringing epic storytelling to our intimate spaces. We will also rededicate ourselves to what works best.

Whether you are a longtime Playhouse supporter or are joining us for the first time, we are thrilled that you have chosen to be part of our community. We are more excited than ever to walk into the future together.

--Timothy L'Ecuyer  
Artistic Director

# MOULTON FARM

Meredith, N.H.



Farm Market Open Daily

Mid-March Through Dec. 31

DRIVEWAYS • WALKWAYS  
PARKING LOTS • ROADS



603-279-1499

[www.bryantpaving.com](http://www.bryantpaving.com)



FIND YOUR ESCAPE!

DOWNTOWN MEREDITH

603 279.3905

312 Daniel Webster Hwy

DOWNTOWN LACONIA

603 409.6756

630 Main St.

[www.innisfreebookshop.com](http://www.innisfreebookshop.com)

## KATHLEEN E. SWEENEY

CERTIFIED PUBLIC ACCOUNTANT

P.O. Box 1259  
Center Harbor, NH 03226  
(603) 253-4011  
Fax (603) 253-4051

P.O. Box 1187  
North Conway, NH 03860  
(603) 356-7036  
Fax (603) 733-5250

[ksweeney@metrocast.net](mailto:ksweeney@metrocast.net)  
[www.kathleensweeneypca.com](http://www.kathleensweeneypca.com)

Thank you for voting us best in the lakes region



Dependable and timely Oil, Diesel and Propane deliveries from Loudon to Lincoln and Alexandria to Alton  
Full Emergency and Installation services

Family Owned & Operated Since 1946 • (603) 524-1417 • [www.foleyoilco.com](http://www.foleyoilco.com)

CELEBRATING  
**75** YEARS  
1946-2021

Heating Oils  
Propane  
Diesel  
24-Hour Emergency Service  
Boiler Installations  
Preventive Maintenance

*Mello  
Moose*  
**COFFEE HOUSE**

136 Daniel Webster Hwy, Meredith  
(603) 677-7037

Great coffee, breakfast sandwiches, and  
fresh baked goods to start your day!

  
**TWIN BARN'S**  
BREWING CO.

194 Daniel Webster Hwy  
Meredith



**Bring Ticket Stub To  
Twin Barns for 50%  
off apps**

*We are thrilled to support  
The Winnepesaukee Playhouse*

Temple B'nai Israel  
Laconia, NH



TBINH.ORG



*Prescott*  *Farm*  
Environmental Education Center



*After the play—  
we'll help you find ways to play  
outside!*



928 White Oaks Road, Laconia  
603.366.5695 [prescottfarm.org](http://prescottfarm.org)

Before the Play  
enjoy dinner at



or

  
STEAKS & SEAFOOD

253-4762  
Center Harbor

524-9373  
Lakeport

[www.magicfoodsrestaurantgroup.com](http://www.magicfoodsrestaurantgroup.com)

# Supporting the Arts LAURA & GARY STEPHAN

*In loving memory*

Dorothy Marie Schrader

Gerald Lewis Schrader



**The Laconia Daily Sun Don't Miss a Day!**

Read online at [laconiadailysun.com](http://laconiadailysun.com)

sign up for daily newsletters • home delivery call (603)737-2020



*Lakes Region*  
**FENCE**

Proudly  
Supporting  
The  
Winnepesaukee  
Playhouse

**Residential Fencing Specialists**  
FULLY INSURED



**SINCE 2005**

[www.LRFence.com](http://www.LRFence.com)

222 Country Club Rd  
Gilford, NH 03249

Call Us for a Free  
Estimate!  
603.524.6061

**BRAVO WINNI PLAYHOUSE!**

*Patrick's*  
IRISH ROOTS - AMERICAN SPIRIT

[patrickspub.com](http://patrickspub.com) • 603) 293-0841

18 Weirs Rd Gilford, NH

**HART'S**  
TURKEY FARM  
**Restaurant**



233 Daniel Webster Hwy  
Meredith, NH 03253  
603-279-6212

[hartsturkeyfarm.com](http://hartsturkeyfarm.com)

Regular  
Children &  
Mini  
Menus  
Available  
Gift Shop  
Catering

**IRWIN**  
AUTOMOTIVE GROUP

603-524-4922 | [irwinzone.com](http://irwinzone.com)

*Serving New Hampshire Since 1951*

59 Bisson Avenue Laconia, NH

446 Union Avenue Laconia, NH





## 2023 SHOW LISTINGS

# SPRING

### March 24-26: Charlotte's Web

Adapted by Joseph Robinette, Based on the book by E.B. White

**Radiant! Terrific! Some pig!**

All your favorite characters from E.B. White's classic children's novel come to life on the stage as Wilbur, a runt of a pig, ends up under the protection of an extraordinary spider, Charlotte. Charlotte saves Wilbur's bacon with the magical words she weaves in the web while teaching him the true meaning of friendship.

Sponsored by:



NEW  
HAMPTON  
SCHOOL

### April 14-16: Twelfth Night

By William Shakespeare

**If music be the food of love, play on!**

A shipwreck. Separated twins. Mistaken identity. Unrequited love. Lost in an unfamiliar land, quick-witted Viola disguises herself as a man and finds herself in the middle of an explosive love triangle in one of Shakespeare's most beloved romantic comedies.

Sponsored by:



NEW  
HAMPTON  
SCHOOL

### April 27-30: Ken Ludwig's Lend Me a Tenor

**A screwball comedy from the master of farce!**

When a world-renowned opera star ends up passed out in a hotel room before he is due on stage, a lowly office assistant is persuaded to don his costume and go on in his place. But when our star revives, hilarity ensues. Mix two tenors in two identical costumes with a singing bellhop and a seductive soprano, and you get chaos of operatic proportions.

Sponsored by:



Lakes Region  
**FENCE**

THE *Winni*  
**PLAYERS**

# 2023 SHOW LISTINGS

## PROFESSIONAL SEASON

### June 15-July 8: Mamma Mia!

Music and Lyrics by Benny Andersson and Björn Ulvaeus and some songs with Stig Anderson,  
Book by Catherine Johnson, Originally Conceived by Judy Crayme

**The global smash-hit musical returns to the Playhouse!**

Over 60 million people all around the world have fallen in love with the characters, the story, and the music that make **Mamma Mia!** the ultimate feel-good show! A mother. A daughter. Three possible dads. And a trip down the aisle you'll never forget!

Sponsored by:

Delivering on A promise.™



### July 12-22: SHOUT! The Mod Musical

Created by Phillip George & David Lowenstein

**The music, the fashion, and the freedom of the swinging 60s!**

This smashing revue tracks five groovy gals as they come of age during those liberating days that made England swing! Join this fast-paced journey through infectious and soulful pop anthems and ballads like "To Sir With Love," "Downtown," "You Don't Have to Say You Love Me," "Son of A Preacher Man," and "Goldfinger." Groovy, baby!

Sponsored by:



### July 27-August 12: Agatha Christie's Murder on the Orient Express

Adapted by Ken Ludwig

**All aboard for a trip you'll never forget!**

Just after midnight, a snowdrift stops the Orient Express in its tracks. The luxurious train is surprisingly full for the time of the year, but by the morning there is one fewer passenger. An American tycoon lies dead in his compartment, stabbed eight times, his door locked from the inside. Isolated and with a killer in their midst, the passengers rely on detective Hercule Poirot to identify the murderer – in case they decide to strike again.

Sponsored by:



## 2023 SHOW LISTINGS

# PROFESSIONAL SEASON

### August 16-26: Driving Miss Daisy

By Alfred Uhry



**An open road of possibility**

Uhry's portrait of an aging Southern woman and the Black man hired to be her driver. What starts out as indifference and disdain soon turns into a relationship of mutual trust and compatibility as they break down each other's defenses and come to realize that friendship comes in all different packages.

Sponsored by:

**LOVERING**  
Cars you love from people you trust.

**VOLVO**  
Concord Meredith Nashua

**98.3 fm**  
**Frank**

### August 31-September 9: Sweeney Todd, The Demon Barber of Fleet Street

Music and Lyrics by Stephen Sondheim. Book by Hugh Wheeler. From an adaptation by Christopher Bond

**A deliciously gruesome musical!**

Attend the tale of the vengeful barber and the scheming pie shop owner who have been haunting the stage since the show's legendary Broadway debut in 1979. **Sweeney Todd** is a tale of love, lust, revenge, and murder set amongst the smog of Victorian England. One of the most deliciously inventive scores of all time, it will leave you hungry for more!

### September 14-24: The Glass Menagerie

By Tennessee Williams

**"In memory, everything seems to happen to music."**

One of the enduring classics of the 20th century, **The Glass Menagerie** is a semi-autobiographical play from one of this country's most beloved playwrights. This memory play is a portrait of a young man attempting to understand the difficult mother and delicate sister who tether him to home. A powerful and haunting piece of theatre.

Sponsored by:

**THE FITNESS**  
**Edge**  
Health Club

## 2023 SHOW LISTINGS

# FALL

### October 20-29: Corduroy

Based on the books by Don Freeman, Adapted for the stage by Barry Kornhauser

**"I like you the way you are."**

When the lights are dimmed and the doors are locked, a department store comes to life.

Corduroy, the stuffed bear with the green overalls, must outsmart the Night Watchman as he waits for his human friend, Lisa, to return. With his missing button, Corduroy may not be perfect, but Lisa proves that sometimes all you need is a friend.

### November 8-12: Fiddler on the Roof

Book by Joseph Stein, Music by Jerry Bock, Lyrics by Sheldon Harnick

**To Life!**



One of the most popular musicals of the 20th century, **Fiddler on the Roof** is the Tony Award-winning sensation that introduced the world to favorite songs like "Tradition!", "Sunrise, Sunset," and "If I Were a Rich Man." Milkman Tevye's world is turned upside down by both the changing political landscape in his home country, and the changing ideals of a younger generation. Set in the area now called Ukraine, today this nearly 60 year old musical resonates in a newly relevant way.

### November 30-December 3: Miracle on 34th Street:

**A Live Radio Play**

Lux Radio Script Adapted by Liz Zazzi

**A holiday classic!**

The Winni Players annual live radio drama is back! When a department store Santa claims he's the real Kris Kringle, his case gets taken all the way to the Supreme Court. A little girl's belief makes the difference in the 'miracle.' With live Foley effects and a host of on-air personalities, the radio play is an annual highlight!

Sponsored by:





## 2023 SHOW LISTINGS

# WINTER

### December 15-31: Cinderella: A Traditional English Panto

By Neil Pankhurst

**Don't let the clock run out before you see the biggest panto of them all!**

Your favorite family holiday event is back! Filled with bright lights, big costumes, dynamic dancing, silly slapstick for the littles, innuendo for the adults, and a double entendre or two (or three!), our annual English Panto is a treat for ages 3 to 103! "Boo" the villain, "cheer" the hero and join us for an English tradition that has been a holiday staple since the nineteenth century!

We're proud to bring a little old England to New England!

*Birch Hill*  
BOOKKEEPING & CONSULTING



The Winnepesaukee Playhouse Education Department promotes the developmentally appropriate acquisition of theatrical skills, fosters a life-long appreciation of the technique, history, and literature of theatre and its ancillary fields of study, and—above all—seeks to inspire its students to use theatre as a tool to develop empathy, with which they may explore and come to better understand the world.



The Winni Players Community Theatre uses live theatre to provide its members with opportunities for artistic expression, personal growth, and friendship.

We build community through theatre.

**NORMANDIN, CHENEY & O'NEIL, PLLC**  
ATTORNEYS AT LAW

Experience you can rely on. Advice you can trust.

*Wills, Trusts and  
Estate Planning*

*Real Estate and  
Land Use*

*Commercial and  
Corporate Law*

*Injury Law*

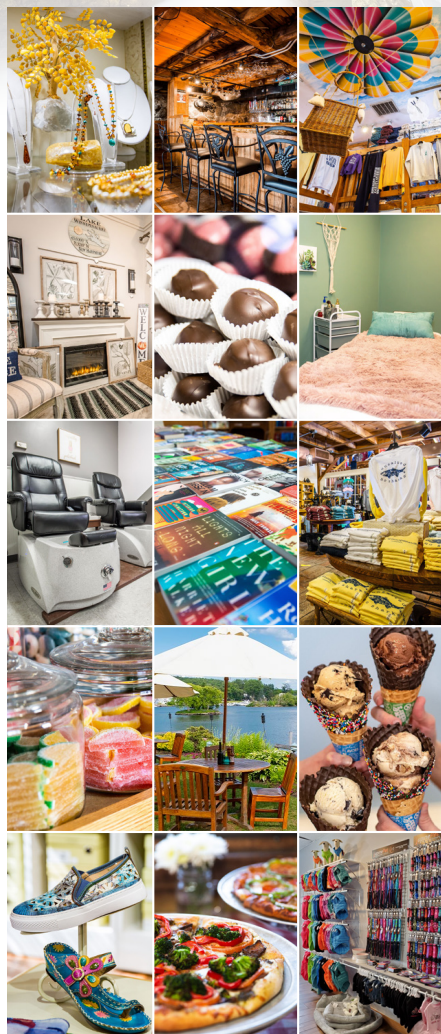
*Civil and Criminal  
Litigation*

**603-524-4380  
(or 1-800-529-0631)**

**www.ncolaw.com**

**213 Union Avenue  
P.O. Box 575  
Laconia, New Hampshire  
03247**

**SHOP. DINE. EXPLORE.**



*Lakes Region's Premier Shopping Destination*

**Unique Marketplace Shops  
5 Distinctive Restaurants • 4 Inns  
Boardwalk, Park & Sculpture Walk  
Friday Night Music - July & August**

**millfalls.com/shop • Routes 3 & 25 Meredith, NH**



**GOLDEN VIEW**  
HEALTH CARE CENTER  
*A Non-Profit Community*

## *The Retreat at Golden View*

Short-stay rehab conveniently located in the Lakes Region



You have a choice! Golden View works with hospitals throughout New England, so no matter where your hospital stay may be, you can recover close to home!

The Retreat features private suites with private bathrooms, as well as a tailored therapy plan. We are contracted with many private insurances and Medicare.

To learn more or prebook your stay, please call our admissions department at 279-8111.

**Assisted Living • Long-Term Living • Short-Stay Rehab**

Meredith, NH • 279-8111 • [www.GoldenView.org](http://www.GoldenView.org) •







**MALONE, DIRUBBO & COMPANY, P.C.**

CERTIFIED PUBLIC ACCOUNTANTS

*Serving Businesses & Individuals For Over 35 Years*

**Three Convenient Locations**

501 Union Avenue, Laconia  
64 Franklin Street, Franklin  
9 West Street, Lincoln

603-528-2241  
603-934-2942  
603-745-3121

**[www.mdccpas.com](http://www.mdccpas.com)**

*Member AICPA, Private Companies Practice Section, NH Society of CPAs*

*the*  
**WINNIPESAUKEE**  
*playhouse*

**FOLLOW US ON**



Proud to partner  
with Winnepesaukee  
Playhouse to provide  
another season of  
spectacular performances.

**Named  
Best-In-State  
Banks for NH  
by Forbes  
Magazine  
2022**



Franklin Savings Bank  
FSBNH.BANK



**#HappyUp at The Studio!**

Experience the Lakes Region's most joyful and  
eclectic shopping experience for yourself!



598 Main Street, Laconia, NH  
603-524-8008 • [thestudionh.com](http://thestudionh.com)



**FIRESIDE INN  
& SUITES**

*Lake Winnepesaukee*

*Year Round Comfort - Grab & Go Breakfast  
Indoor Pool & Hot Tub - Outdoor Pool seasonal*

**ENJOY the Show!!**

**603.293.7526 / [Firesideinnngilford.com](http://Firesideinnngilford.com)**



**PLAN  
FIRST.**

Period.

It's about your plan. It's about you.

To have a conversation about your financial plan  
with an advice-only guy, give me a buzz.

If you're in the trades and own a business—even  
better.

No suits or ties will be worn to this meeting.  
And there will be Dad jokes.

36 Country Club Road, Suite 926 – p:603-524-4994 –  
joel@planfirstperiod.com – www.planfirstperiod.com

Advisory services through Cambridge Investment Research Advisors, Inc., a Registered Investment Adviser. Cambridge and PlanFirst, LLC are not affiliated.



Altrusa Int'l of  
Laconia, NH, USA

Become a member!

*Join with others who are  
creating better communities!*

[www.altrusalaconia.org](http://www.altrusalaconia.org)  
[altrusalaconia@gmail.com](mailto:altrusalaconia@gmail.com)  
Follow us on Facebook



**Gilford Home Center**  
A SMALLER BOX WITH A BIGGER VALUE

[gilfordhomecenter.com](http://gilfordhomecenter.com)  
**603-524-1692**  
Hours, Mon. - Fri. 7:00 - 5:00  
Sat. 8:00 - 3:00  
Sun. 9:00 - 1:00



Mon.-Fri. 7:30-5:00, Sat. 7:30-3:00  
and Sun. 7:30-1:00  
[gilfordtruevalue.com](http://gilfordtruevalue.com)  
**603-524-5366**



**LOVERING  
AUTO GROUP**

Meredith



4.9

MISIASZEK  
TURPIN



[MISIASZEKTURPIN.COM](http://MISIASZEKTURPIN.COM)

residential | non-residential | historic preservation



## Melcher & Prescott INSURANCE

KNOWLEDGE. TRUST. CONFIDENCE.



CO-OPERATIVE  
INSURANCE  
COMPANIES

Since 1862 Melcher & Prescott Insurance has been a proud sponsor of the arts and culture in our community.

Our local professional staff are here to assist you with all your insurance needs including homeowners, automobile, watercraft, business and employee benefits.

*We work closely with our clients to secure the proper coverage at the best price!*

[www.melcher-prescott.com](http://www.melcher-prescott.com) | [insure@melcher-prescott.com](mailto:insure@melcher-prescott.com) | 603-524-4535



**Best Insurance Company**

# This is what retirement looks like.

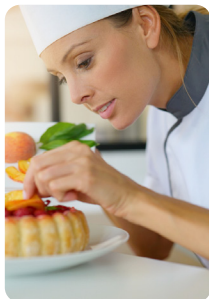


An active community of friends is  
waiting for you at Taylor.

Taylor Community is located in the beautiful Lakes Region of New Hampshire with campus locations in both Laconia and Wolfeboro. Finding a home at Taylor means more than access to a stunning new cottage or apartment - it means receiving the keys to present and future peace of mind.

Whether you prefer an active lifestyle filled with fitness classes and an extensive lineup of social and recreational opportunities, or would rather enjoy a fine-dining experience with friends after a day spent by the lake...

Taylor is the place for you!



🏠 (603) 366-1400 / [taylorcommunity.org](http://taylorcommunity.org)  
A not-for-profit since 1907

**Discover Taylor Community**  
[taylorcommunity.org](http://taylorcommunity.org)

**Laconia**  
435 Union Avenue  
Laconia, NH 03246

**Wolfeboro**  
83 Rolling Wood Drive  
Wolfeboro, NH 03894



The Winnepesaukee Playhouse Presents  
the Winni Players Community Theatre and the  
WP Education Department in

FIDDLER ON THE ROOF

Based on Sholem Aleichem's stories by special permission of Arnold Perl

Book by  
Joseph Stein

Music by  
Jerry Boch

Lyrics by  
Sheldon Harnick

Produced on the New York Stage by Harold Prince

Original New York Stage Production Directed and Choreographed  
by JEROME ROBBINS

Produced by special arrangement with Plays for New Audiences

**Fiddler on the Roof**

is presented through special arrangement with Music Theatre International  
(MTI). All authorized performance materials are also supplied by MTI.

[www.mtishows.com](http://www.mtishows.com)

Production Team

Director.....Cory Lawson  
Music Director.....Judy Hayward  
Choreographer.....Lindsey Brunelle  
Stage Manager.....Annie Jenkins  
Assistant Stage Manager.....Judi Rogato  
Scenic Designer.....Matthew S. Crane  
Costume Designer.....Wendy Davidson  
Lighting Designer.....Thom Beaulieu  
Sound Designer.....Thom Beaulieu  
Scenic Artist.....Gwen Elise Higgins  
Scenic Carpenter.....Fransico Fialho  
Props Coordinators.....Judi Rogato  
.....Doreen Fotino Sheppard  
Production Assistant.....Doreen Fotino Sheppard  
Run Crew..... Ben Rathjen

The Place:  
Anatevka, A Small Village in Russia

The Time:  
1905, On the Eve of the Russian Revolutionary Period



# The Cast

|                                |                   |
|--------------------------------|-------------------|
| Tevye, the Dairyman.....       | Barry Landoff     |
| Golde, his wife.....           | Jen Bleiler       |
| Tzeitel, their daughter.....   | Julianne Stout    |
| Hodel, their daughter.....     | Anna Cook         |
| Chava, their daughter.....     | Natalie Bleiler   |
| Shprintze, their daughter..... | Genevieve Youssef |
| Bielke, their daughter.....    | Hazel Walsh       |
| Yente, the Matchmaker.....     | Kristi Laurendeau |
| Motel, the Tailor.....         | Louie Laurendeau  |
| Perchik, the Student.....      | Oliver Bond       |
| Lazar Wolf, the Butcher.....   | Michael G. Baker  |
| Mordcha, the Innkeeper.....    | Gerald Hitt       |
| Rabbi.....                     | Jim Rogato        |
| Mendel, his Son.....           | Madden Bolduc     |
| Avram, the Bookseller.....     | Jack Greeley      |
| Nachum, the Beggar.....        | Johan Andersen    |
| Grandma Tzeitel.....           | Lynn T. Dadian    |
| Fruma-Sarah.....               | Erin Walsh        |
| Constable.....                 | Brendan Berube    |
| Fyedka.....                    | Rafael Vazquez    |
| Shaindel, Motel's Mother.....  | Lynne Rainen      |
| The Fiddler.....               | Emma Blake        |

## The Villagers:

Sammy Bleiler, Henry Bleiler,  
Paula Chambers, Kianna Drouin,  
Madeline Duncan, Rylee Frederick, Nicole Gauvreau,  
Karen P. Jordan, Valerie Kimball, Karl Kimball,  
Lena Luongo, Corey McDowell, Joanne Morin,  
Patte Sarausky, Charlotte Rose Weiner, Harper Yolda

## ACT ONE:

|                            |   |
|----------------------------|---|
| Tradition .....            | Tevye, Fiddler, Company                               |
| Matchmaker .....           | Tzeitel, Hodel, Chava                                 |
| If I Were a Rich Man ..... | Tevye   |
| Sabbath Prayer .....       | Tevye, Golde, Villagers                               |
| To Life .....              | Tevye, Lazar Wolf, Villagers, Russians                |
| Tevye's Monologue .....    | Tevye   |
| Miracle of Miracles .....  | Motel   |
| The Dream .....            | Tevye, Golde, Grandma Tzeitel, Fruma-Sarah, Villagers |
| Sunrise, Sunset .....      | Tevye, Golde, Perchik, Hodel, Villagers               |
| Wedding Dance .....        | Villagers   |

## - 15-minute intermission -

## ACT TWO:

|                                |                  |
|--------------------------------|------------------|
| Now I Have Everything .....    | Perchik, Hodel   |
| Tevye's Rebuttal .....         | Tevye            |
| Do You Love Me? .....          | Tevye, Golde     |
| The Rumor .....                | Yente, Villagers |
| Far From the Home I Love ..... | Hodel            |
| Chava Sequence .....           | Tevye            |
| Anatevka .....                 | Company          |

## Thank you to:

Bank of New Hampshire, RJ Bogues, Lynn T. Dadian, Community  
Players of Concord, Zach Glennon, Gina Healy, Karen Jordan,  
Clifford King, Lynne Rainen, Jim Rogato, The Streetcar Company

## About the Authors

**Jerry Bock** was born in New Haven, Connecticut on November 23rd, 1928. That was his first out-of-town tryout. Thirty years later, he and Sheldon Harnick gave birth to *The Body Beautiful* in Philadelphia. That was his fourth out-of-town tryout. In between was *Catch a Star*, a fleeting revue that, according to critic Walter Kerr, posed the question; "What do you call something between a flop and a smash?" Kerr's answer? "A flash". Next, Jule Styne and Tommy Valano midwived Bock, Larry Holofcener and George Weiss into birthing *Mr. Wonderful* starring Sammy Davis Jr. The title song and "Too Close For Comfort" are still active off springs. Bock and Harnick's celebrated collaboration yielded five scores in seven years. *The Body Beautiful, Fiorello!* (winner of Broadway's triple crown: The Tony Award, The New York Critics' Circle Award and The Pulitzer Prize in drama, the fourth musical to do so), *Tenderloin, She Loves Me* (winner of Variety's poll of critics as best musical, citing Bock and Harnick as best composer and lyricist), *Fiddler on the Roof* (nine Tonys, notably the citation for best musical of the year), *The Apple Tree* and *The Rothschilds*. In addition to the 1989 silver anniversary production of *Fiddler* (from which a major excerpt was featured in *Jerome Robbins' Broadway*), a highly esteemed revival of *The Rothschilds* enjoyed a successful run off-Broadway the following year. Since then, Bock and Harnick were triply honored by being inducted into the Theater Hall of Fame, receiving the Johnny Mercer Award from the Songwriters Hall of Fame and the Spirit of American Creativity Award from the Foundation for a Creative America. But the "award" that Bock holds near and dear is the honorary Doctor of Humane Letters degree from the University of Wisconsin. It was there that he met his wife Patti, and it was there that he decided to be a composer. Mr. Bock is a member of a number of professional guilds and associations, among which the BMI Foundation, Inc. is a membership he relishes. As for Patti, his wife, George, their son and Portia, their daughter, Bock confesses they are his longest running hit.

**Sheldon Harnick's** career began in the 1950s with songs in revues (e.g., "The Boston Beguine," "The Merry Little Minuet"). With Jerry Bock he created a number of memorable musicals, including *Fiorello!* (Tony Award, Pulitzer Prize), *Tenderloin, She Loves Me* (Grammy), *Fiddler on the Roof* (Tony), *The Apple Tree*, and *The Rothschilds* (subsequently revised as *Rothschild & Sons*). Other collaborations: *Rex* (Richard Rodgers), *A Christmas Carol* (Michel Legrand), *A Wonderful Life* (Joe Raposo), *The Phantom Tollbooth* (Arnold Black, Norton Juster), and *The Audition* (Marvin Hamlisch). He wrote three musicals himself: *Dragons*, *A Doctor in Spite of Himself*, and *Malpractice Makes Perfect*.

**Joseph Stein** won the Tony Award and Drama Critics Circle Award for *Fiddler on the Roof*. His other musicals include *Zorba* (Tony nomination, Drama Critics Circle Award); *Rags* (Tony nomination); *The Baker's Wife* (Olivier Award nomination, London); *Take Me Along* (Tony nomination); *Junjo*; *Irene* (starring Debbie Reynolds); *The King of Hearts*; *All About Us*; and *Enter Laughing: The Musical* (Lucille Lortel nomination, outstanding revival). He also co-authored, with Alan Jay Lerner, *Carmelina*; and with Will Glickman, *Mr. Wonderful* (starring Sammy Davis, Jr.), *The Body Beautiful*, and *Plain and Fancy*. His plays are *Enter Laughing*, *Before the Dawn*, and *Mrs. Gibbons' Boys*. Stein grew up in the Bronx and first became a social worker while pursuing writing on the side. He began his career in TV and radio, writing for "The Sid Caesar Show," "Your Show of Shows," "Henry Morgan Show," and many others, and for personalities including Tallulah Bankhead, Phil Silvers, Jackie Gleason and Zero Mostel. On Broadway he made his debut contributing to the theatrical revues *Lend an Ear* (featuring Carol Channing) and *Alive and Kicking*. He wrote the screenplays of *Enter Laughing* and *Fiddler on the Roof*, for which he won the Screen Writers Guild Award. In 2008, he was inducted into the Theatre Hall of Fame.

# A Note from the Director

Hello and welcome to our little (or not so little) village!

*Fiddler on the Roof* holds a special place in the hearts of so many. For me, what sets it apart from other classical musicals is how it balances huge political world issues and makes them feel so personal by bringing us into the humble life of Tevye. The story of a Jewish family in the fictional village of Anatevka (somewhere in modern-day Ukraine) reflects the universal struggles of tradition versus change, love in the face of adversity, and the resilience of the human spirit.

As you watch the story unfold on our stage, I hope you find inspiration in the strength and love of Tevye's family, and that you leave the theater with a renewed appreciation for the importance of tradition, the need for flexibility, and the bonds of family.

The world was a different place when we first began rehearsing. We approached the story of Anatevka with a sense of nostalgia and some historical distance. However, as we worked on the show while watching the news unfold, we've realized that the themes of *Fiddler on the Roof* have never been more relevant. The global landscape is fraught with division, uncertainty, and many wars. Just as Tevye and his family grapple with their beliefs and traditions in the face of change, we find ourselves in a world that demands reflection on our own values, cultures, and identities.

It's at times like these when we can most fully appreciate how *Fiddler* so successfully explores these complex issues by connecting with our own humanity through the lens of a single family. It's easy to see all of the images on TV, read the news and statistics and get lost in the larger issues surrounding these wars. I hope we can remember at the heart of all of it are real people and families, and that it is their stories that we should be most concerned with. Our thoughts are with all of those suffering around the world and we hope for peace and comfort to come their way.

Thank you for being here and being part of our Anatevka.

--Cory Lawson



# YOUR AD HERE!

Would you like to be a sponsor or program advertiser for our 2024 season? Contact [info@winnipplayhouse.org](mailto:info@winnipplayhouse.org) for more information!

*The Common Man Family — Setting the Stage for Uncommon Dining*



Bay Point at Mill Falls • (603) 279-2253

theCMan  
.com

Church Landing at Mill Falls • (603) 279-5221



Chase House at Mill Falls • (603) 279-3003




OPEN MAY - SEPTEMBER! • (603) 279-3445

## GERMAN MOTORSPORTS

AUDI • VOLKSWAGEN • BMW • MERCEDES • MINI

Authorized BOSCH Service Center



(603) 524-5016 

[www.germanmotorsportsusa.com](http://www.germanmotorsportsusa.com)

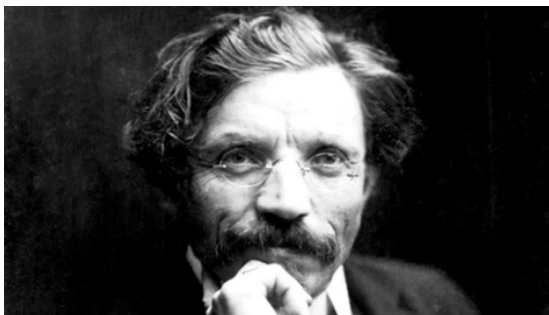
## From The Winnepesaukee Playhouse Education Department...

When *Fiddler on the Roof* first debuted it challenged many of the established norms of Broadway's commercial success. It grapples with serious issues like persecution, poverty, and the struggle to cling to one's convictions amid a hostile and ever-changing environment. Although it was initially criticized for having "limited appeal," the musical struck a chord with audiences, eventually earning the distinction of becoming the longest-running production in Broadway's history, for a period. It enjoyed a remarkable run of 3,242 performances at the Imperial Theatre, pioneering a path for subsequent musicals to explore more profound societal issues.

The characters we've come to know and love in *Fiddler on the Roof* had their origins in the stories written in Yiddish by the popular fiction writer, Sholom Aleichem, whose name means "peace be with you" in Hebrew. These stories made their debut in various publications in Eastern Europe and later found their way into Yiddish publications in America between 1905 and 1910.

Over time, they became beloved figures across the globe, transcending language barriers. The widespread appeal received a significant boost in 1953 when Arnold Perl, a devoted fan of Sholom Aleichem's work and that of other renowned Yiddish writers like I. L. Peretz, created a series of short plays based on Aleichem's stories. These plays, including one by Peretz, were woven together in a production titled *The World of Sholom Aleichem*, bringing to life the vivid existence of the Jewish "Shtetels" in Tsarist Russia. This picturesque, though economically strained, way of life had experienced substantial disintegration due to the aftermath of World War I and was ultimately destroyed during World War II.

The success of *The World of Sholom Aleichem* motivated Arnold Perl to delve deeper into the collection. In 1957, Perl crafted a play centered around the unwavering milkman of Anatevka, which he named *Tevye and his Daughters*. This instilled the belief in Joseph Stein that the Tevye stories had the potential to be transformed into a musical, ultimately giving rise to the beloved *Fiddler on the Roof*.



Sholom Aleichem

## Fiddler Facts At-A-Glance

- **The story is based on:** the short story “Tevye and his Daughters” by Sholom Aleichem.
- **Broadway Opening:** It opened on Broadway on September 22, 1964, at the Imperial Theater.
- **Original Broadway Run:** It originally ran for 3,242 performances.
- **Creative Team:** It featured music by Jerry Bock, lyrics by Sheldon Harnick, and libretto by Joseph Stein.
- **Main Cast:**
  - Zero Mostel played the protagonist Tevye the milkman.
  - Maria Karnilova portrayed his wife Golde.
  - Beatrice Arthur portrayed Yente the Matchmaker.
  - Bert Convy played Perchik the student revolutionary.
- **Later Productions:** Tevye was played by Chaim Topol (also known as just Topol) in later productions; he also starred in the successful 1971 film adaptation.
- **Tony Awards (Broadway):** The Broadway production won nine Tony Awards, including:
  - Best Musical
  - Composer and Lyricist: Jerry Bock and Sheldon Harnick
  - Leading actor: Zero Mostel
  - Featured actress: Maria Karnilova
  - Author: Joseph Stein
  - Producer: Harold Prince
  - Director: Jerome Robbins
  - Choreographer: Jerome Robbins
  - Costume designer: Patricia Zipprodt
- **1971 Movie Version:** The 1971 movie version won 3 Academy Awards, including Best Scoring (John Williams’ first of many).



# PAVING OUR WAY TO THE FUTURE!



**BETWEEN NOW AND SEPTEMBER 2024**

the Winnepesaukee Playhouse needs to **raise \$200,000** for important improvements to our campus. Your generous donation will help us to resurface campus roadways and parking lots for a safer, more enjoyable theatre experience!

Donate online at [www.winnepesaukeeplayhouse.org](http://www.winnepesaukeeplayhouse.org)!



**THANK  
YOU FOR  
YOUR  
SUPPORT!**



The Winnepesaukee Playhouse Education Department promotes the developmentally appropriate acquisition of theatrical skills, fosters a life-long appreciation of the technique, history, and literature of theatre and its ancillary fields of study, and—above all—seeks to inspire its students to use theatre as a tool to develop empathy, with which they may explore and come to better understand the world.



### **Educational Programming at the Winnepesaukee Playhouse includes:**

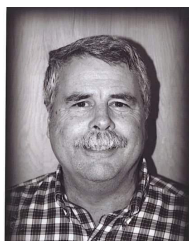
- Four fully realized productions annually for students ages 8-18
- Summer camps for students ages 5-12
- Focused summer training for students ages 13-18
- Classes and workshops for participants of all ages
- Post-performance talkbacks
- The Symposium Series
- Backstage tours
- Informative articles in playbills
- Teacher training
- College internships
- Theatre and arts education advocacy



*For more information...*

[winnepesaukeeplayhouse.org/education](http://winnepesaukeeplayhouse.org/education)  
[education@winniplayhouse.org](mailto:education@winniplayhouse.org)

## The Cast

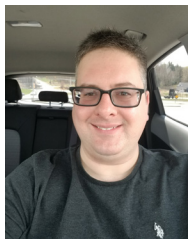


**Johan Andersen** (Nachum) Johan's first major role in a musical was some 60 years ago. Highlights over the years include playing Henry Higgins, Daddy Warbucks (shaved his head), Mayor Shinn, and Frederick in *A Little Night Music*, among many others.

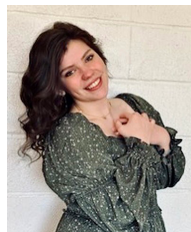


**Michael G. Baker** (Lazar Wolf) is very happy to be back on stage once again at the Winnepesaukee Playhouse. His work with this great bunch of folks started with *Bad Seed* (Colonel Kenneth Penmark) and continued through *Twelve Angry Men* (Juror #6), *The Caucasian Chalk Circle* (Simon), *It's a Wonderful Life* (Ernie Bishop), *One Flew Over the Cuckoo's Nest* (Cheswick), *Little Shop of Horrors* (Audrey II Voice), *Harvey* (Dr. Lyman Sanderson), *Of Mice and Men* (Lennie Small), *The Skin of Our Teeth* (George Antrobus), and *Lend Me a Tenor* (Tito Morelli). He

has also participated in off-site productions, some of the radio plays, staged readings, and playwriting festivals the Playhouse hosts. It has been extremely rewarding and refreshing getting back on stage with friends old and new. He hopes you enjoy this show as much as he has enjoyed working on it. Michael and his most understanding wife Lisa live in Plymouth.



**Brendan Berube** (Constable) is thrilled to return for his second show on the Winnepesaukee Playhouse stage, where he previously appeared as Henry Saunders in *Lend Me a Tenor*. When not on stage, he can be found dotting i's and crossing t's (literally) as Managing Editor of *The Meredith News* and other local weekly newspapers published by Salmon Press. Brendan also proudly serves on the Winni Players Steering Committee and the board of directors for The Streetcar Company in Laconia, where he also performs regularly.



**Emma Blake** (The Fiddler) is a recent graduate of Laconia Christian Academy (LCA). She is currently enrolled at NHTI in the visual arts program. She started her love of musicals during her sophomore year in the ensemble cast of *Joseph and the Amazing Technicolor Dreamcoat*. She continued with *Big Fish* and various plays. She played Belle in *Beauty in the Beast*, which was her dream role growing up. She loves to sing, draw, and play volleyball and basketball. *Fiddler on the Roof* is Emma's debut in community theatre, and she is loving every minute of it.

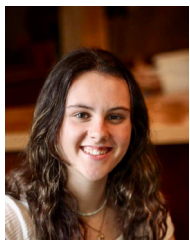
## The Cast



**Henry Bleiler** (Villager) is a 7th grader at Laconia Christian Academy. Henry very much loves basketball, but also enjoys performing on stage, especially alongside his family. Recent credits include *Beauty and the Beast*, *Frozen Jr*, *Big Fish*, *Joseph...*, and *Schoolhouse Rock, Live, Jr*.



**Jen Bleiler** (Golde) is thrilled to be back onstage with the Winni Players! Jen is a graduate of UNH's musical theatre program. She now teaches various courses and is the Performing Arts Director at Laconia Christian Academy. She has over 25 directing credits there to date, in addition to serving as co-organizer of LCA's thriving Poetry Out Loud program. It's been a real treat to get back on stage with such a fantastic group, including her own children and students! Special thanks to her husband David for his love and support. Mt. 5:16- Let your light so shine!



**Natalie Bleiler** (Chava) is a sophomore at Laconia Christian Academy. She loves to sing and be on stage, in addition to playing varsity basketball and volleyball. Favorite past roles include The Witch in *Big Fish*, Elsa in *Frozen Jr*. and Babette in *Beauty and the Beast*. She's excited and thankful to be back on stage at the Winnepesaukee Playhouse!



**Sammy Bleiler** (Villager) is very excited to be on stage in his first show with the Winni Players. He is a second grader at Laconia Christian Academy and has been on stage in school productions of *Beauty and the Beast*, *Frozen Jr*, and *Big Fish*. He's very excited to spend his 8th birthday doing his first ever two- show day! Many thanks to Cory and the team, as well as his friends and cast mates for making this such a great first community production for him as the youngest cast member!



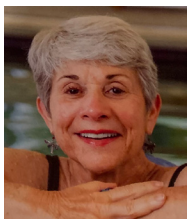
**Madden Bolduc** (Mendel) is VERY excited to be taking on the role of Mendel in *Fiddler on the Roof*. He is a seventh grader at Moultonborough Academy, and he lives in Meredith, NH with his mom, dad, brother and dog. He is excited for his first show at the Playhouse. Favorite past roles include: Jack Kelly (*Newsies Jr.*), Sven (*Frozen Jr.*), Baloo (*The Jungle Book Kids*), Manager/Mr. Greenway (*Elf The Musical Jr.*), Jasper (*101 Dalmations Kids*), Fritz/The Rat King (*The Nutcracker*), Eric (*Matilda The Musical Jr.*) and many more. At Moultonborough Academy, he has done *The Little Mermaid*, *She Kills Monsters*, and *Mythically Mythical Myths*. Madden was busy volunteering in the box office this summer at Interlakes Summer Theatre. Madden is also a dancer at The Studio at Meredith Bay. It's his seventh year of dance but his first with The Studio at Meredith Bay. He hopes to one day pursue a career in musical theatre.



## The Cast



**Oliver Bond** (Perchik) is a sophomore attending Laconia Christian Academy, and is excited to be a part of the Winnepesaukee Playhouse's *Fiddler on the Roof*. He has been acting for six years, and enjoys other performing arts such as busking around the lakes region or singing in school events. He is also the owner of Silver Ridge Leather, and is a vendor at various fairs around NH.



**Paula H. Chambers Ph.D.** (Villager) is thrilled to be on the Winnepesaukee Playhouse stage for the first time. She is a transplant from Georgia where she performed in several Bainbridge Little Theater Plays. With only four years in New Hampshire, she has been on WMUR Chronicle twice.



**Anna Cook** (Hodel) Meet Anna Cook! Anna has been a part of over 35 theatre productions in the past but this will be her first with the Winnepesaukee Playhouse and she couldn't be more thrilled. Anna has played roles such as Carrie in *Carrie the Musical*, Penelope Pennywise in *Urinetown* and Hope in *Almost Maine*. She has 13 years of dance experience and has been participating in local theatre productions since fourth grade. *Fiddler* has been a dream show of hers for over a year now and she is honored to be playing the role of Hodel in this amazing production. She hopes you enjoy the show!



**Lynn T. Dadian** (Grandma Tzeitel) is delighted to be a part of *Fiddler on the Roof* with The Winni Players, the WP Education Department, and many good friends! She has worked on stage and behind the scenes with the Players on several of their productions. She's also participated in, directed, or worked on in some capacity, numerous plays and musicals with The Streetcar Company and Franklin Footlight Theatre. A few roles she's checked off her acting bucket list have included Rosie (*Mamma Mia!*), Madame

Thenardier (*Les Miz*), Mrs. Potts (*Disney's Beauty and the Beast*), Adelaide (*Guys and Dolls*), Princess Puffer (*The Mystery of Edwin Drood*) and Marmee (*Little Women, The Musical*). Cheers and Mazel Tov to Mr. Paravicini. Enjoy the show and THANK YOU all for supporting theatre in The Lakes Region!



**Kianna Drouin** (Villager) This is Kianna's first time acting at the Winnepesaukee Playhouse. And she is excited to be working with them. She just moved into her new house the first week of April. Kianna would also like to thank her family for supporting her. She would also like to thank the cast and crew for giving her the opportunity to work with them and hopes to work with them in the future. She hopes you enjoy the show.

## The Cast



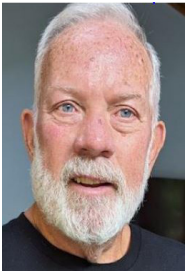
**Madeline Duncan** (Villager) is a 6th grader at Sant Bani School who loves to bake, read, and do theatre. She lives in New Hampton with her family, two cats, a dog, and two fish. Madeline has previously performed in *Alexander and the Terrible, Horrible, No Good Very Bad Day*, *James and the Giant Peach*, *Alice in Wonderland*, and *Charlotte's Web*.



**Rylee Frederick** (Villager) is delighted to be performing in her first production. She is a busy student at Alton Central School, currently in the fourth grade. If she isn't at play practice or her after school Drama Club, she is practicing competing cheer with Velocity Cheer or watching her brother play hockey with the Laconia Lakers.



**Nicole Gauvreau** (Villager) This is Nicole's first production with the Winnepesaukee Playhouse; it's actually their first play (not including Purim Shpiels at Temple Beth Jacob) since 2007! The Youth Services Librarian at Pease Public Library in Plymouth, NH by day, Nicole is a person who commits to way too many things by night (and day) and thought a play would be an excellent addition to doing too many things.



**Jack Greeley** (Avram) is a recently retired college professor trying his first foray into community theater. His family has been seasonal residents on Lake Winnepesaukee since he was a child. He just moved permanently to the Lakes Region with a home in Belmont. Jack is blessed with a large extended family and two sons, two grandchildren, and another on the way! He enjoys the outdoors, both on land and on the water, and spending time on all manner of DIY projects.



**Gerald Hitt** (Mordcha) is delighted to be back in the theater after a hiatus of several decades, which he spent flying around the world—first landing on aircraft carriers for the Navy, then making sure your online orders made it to the US while flying for UPS. Gerry has been acting since he learned to talk, his impish smile getting him out of lots of trouble along the way! A versatile actor and singer, Gerry has participated in plays and musicals, church choirs and the US Naval Academy Glee Club. A cherished memory was playing handbells in the Thüringer Orgelsommer concert series

in the former East Germany shortly after the wall fell. Hospitality is one of Gerry's gifts, so it's fitting that he's playing the Innkeeper and bartender!

## The Cast

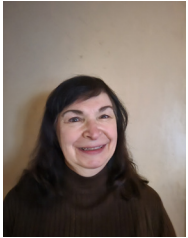


**Karen P. Jordan** (Villager) holds a BFA in Vocal Music from Ithaca College, founder and soprano of the Swing quartet “Swell Party” producing 2 CD’s for them, Choral Director at Inter-Lakes High School and Director of Lakes Region Singers and First United Methodist Church. Among her many credits are performances as Katisha in *The Mikado* with Boston Publix Theater, Mother Abbess - *Sound of Music*, and Dorothy Brock - *42nd Street* with The New London Barn. Many community theater roles with Streetcar Co, Laconia, as The Witch: *Into the Woods*, Josephine: *HMS Pinafore*,

Marian: *The Music Man*, Yum Yum: *Mikado*, Jenny Lind: *Barnum* and with Pittsfield Players, Laurie: *Oklahoma*, Marian: *Music Man*, Guinivere: *Camelot*, Mable: *Pirates of Penzance*, Maria: *Sound of Music*. She has also performed as soloist with NH Music Festival and Lakes Region Symphony Orchestra. She is thrilled to be making her debut at the Winnepesaukee Playhouse!



**Karl Kimball** (Villager) Amazed it’s the Winnepesaukee Playhouse’s 20th year! He has memories of his wife insisting he be in *The Government Inspector* with her, It is a great memory, only to be topped by him being Col. Blake in *M\*A\*S\*H* on this stage. Yet he says this tops them both, with her being Mamma to his Pappa. He likes to ask her, ‘Do You Love Me?’



**Valerie Kimball** (Villager) Did you hear?, Did you hear? Spoken with great excitement, only to be topped that her husband is onstage with her. They have done many shows together. She recalls *Macbeth* and *The Importance of Being Earnest* when she played Lady Bracknell for Streetcar Company. Yet she says this tops them all, with him being Pappa to her Mamma. On his Love question, she likes to answer, “I suppose I do!”



**Kristi Laurendeau** (Yente) is a software tester with NH-DHHS. She has performed in local community theatre for over forty years with the Streetcar Company and the Pittsfield Players, and is having a great time in her first show with the Winni Players! Her past roles include the Wicked Witch/Miss Gulch in *The Wizard of Oz*, Dolly in *Hello, Dolly!*, Maria in *The Sound of Music*, and Charity Barnum in *Barnum*. Fun fact about Kristi: she played Tzeitel in *Fiddler on the Roof* in 1994 with the Streetcar Company, where Shprintze was played by our Shprintze’s mom and Bielke

was played by our Mendel’s mom. “It has been a pleasure working with old and new friends - especially that poor little tailor (what’s his name?). Anatevka is a very special place.”

## The Cast



**Louie Laurendeau** (Motel) is excited to be back in Anatevka for a second time, having played Tevye last year in Gilford High School's production of *Fiddler on the Roof*. Some of Louie's other previous roles include Charlie Brown in *You're A Good Man, Charlie Brown* and Judas in *Godspell*. He will also be playing Sweeney Todd in One Light Theatre's production of *Sweeney Todd* this spring. Louie loves singing, and has taken part in the New England Music Festival, All New England Choral Festival, and Granite State Music Festival. He also enjoys creating visual art and writing poetry, and intends to pursue a college education in the arts next year.



**Barry "Bear" Londoff** (Tevye) was a professional opera singer in Chicago for 20 years before moving to New England. His more recent roles include the sergeant in *Pirates of Penzance* and Tevye in *Fiddler on the Roof* at the Rochester Opera House. He is the proud papa of children who are also in the arts.



**Lena Luongo** (Villager) has been singing and acting in theatre productions since 1980 with multiple community theater troupes. This is her first performance with the Winnepesaukee Playhouse. Some of her favorite roles include Mama in *I Remember Mama*, Morgan Le Fay in *Camelot*, Rachel in *Two by Two*, and Grandma Tzeitel in *Fiddler on the Roof*. She keeps busy in retirement with tap dancing, art lessons, yoga, church choir and ushering for multiple area theatres. She couldn't do this without the support of her wonderful husband.



**Corey McDowell** (Villager) is excited to make his Winnepesaukee Playhouse debut. He first discovered his passion for performing when he was cast as an Oompa Loompa in Gilford Middle School's production of *Willy Wonka and the Chocolate Factory*. A 2021 graduate of Gilford High School, Corey performed in GHS productions of *Godspell*, *Footloose*, *Urinetown*, and *Almost Maine*. Last June, he traveled to Austin, TX to volunteer at a week-long theater camp held by Joshua's Stage, an enrichment program for people with special needs. Earlier this year, Corey performed in the first 603 United Talent Show at the Lakeport Opera House.



## The Cast



**Joanne Morin** (Villager) is excited to be returning to a Winnepesaukee Playhouse production with so many friends and exceptional singers. Joanne has performed in community theatre around the Boston area and the Lakes Region enjoying roles like Peggy (*Godspell*), Sister Hubert (*Nunsense*), Clairee (*Steel Magnolias*), and the Sea Hag (*Popeye*). She lives in Laconia working at home in the environmental field enabling her to get back into local community theatre!



**Lynne Rainen** (Shaindel) is excited to be appearing on the Winnepesaukee Playhouse stage for the first time. Prior singing credits include six years as a member of the chorus of Boheme Opera NJ in operas including *Carmen*, *L'elisir d'Amore*, *La Traviata*, *Madama Butterfly*, *Le Nozze di Figaro*, *Die Fledermaus*, and *Lucia di Lammermoor*. She was an active participant in the Newton Country Players community theater for thirteen years, performing in plays and musicals including *Sweet Charity*, *Ten Nights in a Barroom*, *Chicago*, *Monique*, and *The Fantasticks*. She won the New England Community Theater regional award for Best Actress for her portrayal of Moira in *Talking With*. Lynne holds academic degrees in chemistry and biophysics and is retired from successful careers in the medical products and hospitality industries. She wishes to thank Mark, Aaron, Rebecca, and Lola Ruth for bringing joy and love into her life every day.



**Jim Rogato** (Rabbi) is happy to be part of this production and loves playing colorful roles. Favorite roles have been John Proctor in *The Crucible*, Brundibar in *Brundibar*, Capt. Hook in *Peter Pan*, Sir Bedivere in *Spamalot*, Pseudolus in *A Funny Thing Happened on the Way to the Forum*, Adolpho in *The Drowsy Chaperone* along with many dramatic roles in *Our Town*, *12 Angry Men*, *Of Mice and Men*, *The Guys*, and many more. Jim can also be seen performing with his DooWop group The Rockin Daddios all over New England. Thank you for coming and enjoy the show.



**Patte Sarauský** (Villager) is happy to be back on the Winnepesaukee Playhouse stage where you may have seen her previously directing *Charlotte's Web* or performing in *Company*. Patte has been involved in community theatre for over 30 years. "Happy to be doing this show with so many long time theatre friends, while also making new theater friends. It's just as much fun backstage as it is onstage."



## The Cast



**Julianne Stout** (Tzeitel) is making her debut on the musical theatre stage, for the first time, since she was eight years old! She participated in the junior production of *Freedom Bound*, with Majestic Theatre, in Manchester. She is a soprano and has sung in choirs for the majority of her life. While Julianne has dreamed, over the years, of getting back on the stage, life got busy. Now with the support of her husband and three wonderful children, she is eager to have this opportunity to join the theatre community and get back on the stage.



**Rafael Vazquez** (Fyedka) is very excited to be back on stage with the Winnepesaukee Playhouse, last appearing a year ago as Hunter in the Playhouse's Education Department production of *[title of show]*. Raf currently works full time as a butcher and does theatre in the remainder of his free time. Some of Raf's favorite past credits include *Shrek the Musical* (Donkey), *Big Fish* (Amos Calloway), *Newsies* (Crutchie), *Ride the Cyclone* (Ricky Potts), and *Big Fish* again (Edward Bloom).



**Erin Walsh** (Fruma-Sarah) is delighted to perform for the first time at the Winnepesaukee Playhouse. After many years away from acting, she is having so much fun being involved in theatre again. A teacher at New Hampton School for the last 17 years, Erin majored in Spanish and Theater in college with a Masters Degree in Education. In her spare time, Erin enjoys spending time with her daughters, Evelyn and Hazel. Her hobbies include knitting, baking, and reading. She would like to thank her mom, friends, and colleagues for the support they have offered to make it possible for her to participate in this production.



**Hazel Walsh** (Bielke) is a fourth grader at New Hampton Community School. She has been in several shows with the Winnepesaukee Playhouse Education Department, including *The Velveteen Rabbit*, *Charlotte's Web*, and *Alexander and the Terrible Horrible No Good Very Bad Day*. Last year she also performed in *James and the Giant Peach* at New Hampton School. In her free time, Hazel enjoys watching anime, reading, and seeing friends and family. Hazel loves shopping, doing well in school, and theatre and is happy doing her fourth play here at the Playhouse.



**Charlotte Rose Weiner** (Villager) is very excited for her debut on the Winnepesaukee Playhouse stage. She has been a member of The Studio at Meredith Bay for five years, where she enjoys taking ballet, tap, jazz, technique and her favorite...Musical Theatre with Miss Ashley! Charlotte is a busy 8-year-old who loves exploring in the woods, playing soccer, drawing, traveling, listening to music, singing, cooking, animals, and her family, friends and STUFFIES! Charlotte is a third grader at Sandwich Central School.

## The Cast



**Harper Yolda** (Villager) is thrilled to be participating in her first community theatre show at the Winnepesaukee Playhouse! In addition to having participated in several productions through the Interlakes Elementary School Theatre program (*Seussical Jr* and *Annie Jr*), she has also taken dance classes in the Lakes Region for 7 years. When she's not at rehearsal, Harper can be found with her nose happily in a book, supporting her fellow teammates through the ILES Destination Imagination program, playing her flute, drawing, or painting.



**Genevieve Youssef** (Shprintze) is a graceful and compassionate 10 year old from Laconia. She discovered her passion for theatre when she took the stage for Powerhouse Theatre Collaborative's *A Christmas Carol* last year. Since then, she has starred as Charlotte in Winnepesaukee Playhouse's *Charlotte's Web*, appeared in the Streetcar Company's *Jungle Book*, and played Amanda Thripp in Interlakes Summer Theater's *Matilda*. When she isn't on the stage, she can be found taking a dance or acro class, fashion-designing, playing her clarinet, reading, or writing. Genevieve has watched countless videos of her mom playing Shprintze in Streetcar's 1994 production, and secretly dreamed she would land the same role.

Her family is delighted to be immersed in the "Tradition" this production has offered.

# LIMITED EDITION

Handmade 20th Season Mugs  
Created by local artist Emily Wernig



### About the Artist

Emily's love for clay started in high school and intensified during her studies at the University of New Hampshire. Wernig graduated Summa Cum Laude from the UNH in May 2018 with a BFA in ceramics and drawing. Emily has had her work exhibited at the Portsmouth Music and Art Center, Bedrock Gardens, UNH Museum of Art and Sotheby's. Post-grad, Emily taught at The Bascom Center for the Visual Arts in Highlands, North Carolina as the Ceramic Teaching Resident. She worked in the Dave Drake Studio Barn, under the direction of Frank Vickery, teaching classes and assisting with general studio upkeep. She now resides in New Hampshire, making and selling her pottery, as well as teaching ceramics at UNH.

## The Production Team

**Lindsey Brunelle** (Choreographer) is a performing artist, instructor, and choreographer. She is a recent graduate of Plymouth State University where she received a BA in Musical Theatre and Theatrical Dance. Lindsey is also a dance instructor at the Seacoast Repertory Theatre, an instructor at the Krystal Ballroom dance studio, and is the co-founder of Theatrical Pathways LLC.

**Matthew S. Crane** (Scenic Designer) is a Colorado based scenic designer and theatermaker. Previous designs with the Winnepesaukee Playhouse include *Murder for Two*, *The Mousetrap*, *Avenue Q*, and *Ghost – The Musical* for the professional company; and *Twelfth Night*, *Charlotte's Web*, *Alexander and the Terrible, Horrible, No Good, Very Bad Day*, [title of show], *The Velveteen Rabbit*, and *Spoon River* with the Education Department. In addition to theatrical design, Matthew is also an associate designer at Lionfish Design, providing design and art direction for broadcasts, live events, and corporate clients. MFA Rutgers University, Mason Gross School of the Arts.

**Wendy Davidson** (Costume Designer) is a Laconia resident who has made her living in the theatre for the past 35 years. She started out as a performer, touring throughout the world. Then, when retiring from dance, she changed over to costuming, working on Broadway, Radio City Music Hall, and cruise ships. Wendy settled in Tampa, Florida for 17 years, working for Norwegian Cruise Line Holdings as the Wardrobe Manager, creating the costume shop for Norwegian Creative Studios. Wendy now proudly costumes for the Winnepesaukee Playhouse, having worked the entire 2021 season, as well as the Education Department shows in 2022. She is honored to be working with such wonderful talent and the incredible production team. She would especially like to thank the cast for volunteering their sewing skills, their clothing, and their stories to help her accomplish the look of costumes.

**Francisco Fialho** (Scenic Carpenter) is a newly graduated theatre technician/carpenter. Francisco has built a number of sets, previously working on shows at Keene State College as both a shop hand and run crew.

**Judy Hayward** (Music Director) holds a BFA in Piano Performance from LA Tech Univ. and a Master's degree from the Univ. of Oregon in Arts Administration. She has music directed for numerous theaters, both professional and community, from coast to coast. In the Northeast, Judy has music directed for Winnepesaukee Playhouse, Seacoast Rep, StageCoach Productions, Actorsingers, Stoneham Theater (MA), among others. Judy received the NH Theatre Award for music direction for Winnepesaukee Playhouse's productions of *The Fantasticks!* and *Chicago*. In addition, she was music director for their productions of *Shout!*, *Dani Girl*, *Tell Me On a Sunday*, *Jesus Christ Superstar*, [title of show], *25th Annual Putnum County Spelling Bee*, *Joseph...Dreamcoat*, *Godspell*, *Peter and the Starcatcher*, *Cabaret*, *High Society*, *Aida*, *Carrie*, *Urinetown*, and the holiday Pantos.

**Gwen Elise Higgins** (Scenic Artist) is a multi-hyphenate theatre artist from the Midcoast of Maine working throughout New England. Graduated from University of New Hampshire with a BA in Theatre. A lifelong learner and artist experimenting in countless mediums with varying degrees of success and welcome failure. Painter, designer, actor, etc. [www.gehiggins.com](http://www.gehiggins.com)

## The Production Team

**Annie Jenkins** (Stage Manager) is happy to be working her first season with the Winnepesaukee Playhouse! New York credits include *First Daughter Suite* (The Public Theater); *Wolf in the River* (The Flea Theater world premiere); *Merrily We Roll Along, Swing!* (NYU Tisch New Studio on Broadway). Regional credits include *Disney's The Little Mermaid*, *Disney's Mary Poppins*, *King Lear*, and *As You Like It* (The Alabama Shakespeare Festival); *Gloria*, *Tigers Be Still*, and *Grounded* (Outpost Repertory Theatre). She is a graduate of the University of California at Irvine.

**Judi Rogato** (Assistant Stage Manager) is excited to add another production to her long list of Winni Players shows, especially because she was once again able to work on a show with Jim. This time she is working on props as well being the Assistant Stage Manager.

**Doreen Fotino Sheppard** (Production Assistant) is excited to once again be working with the Winni Players, this time by helping with the details of production: costume tasks, props, backstage hand, all the things. Doreen most recently worked with the Winni Players on the costume team for *Lend Me Tenor* and previously onstage as Kate in *Dancing at Lughnasa*, The Maid in *The House of Bernada Alba*, Lizard in *Frog and Toad*, and many more roles in many more productions.

**THE  
FITNESS  
Edge**


BOOT CAMP PLUS | INDOOR CYCLING | TOTAL BODY TONE  
BARRE | POSTURE | YOGA | ZUMBA | TRX AND MORE!

169 DANIEL WEBSTER HIGHWAY  
MEREDITH NH

78 WHITTIER HIGHWAY  
MOULTONBOROUGH NH

WE OFFER  
LIVE & ZOOM  
CLASSES

OFFERING NH LAKES REGION 2 CONVENIENT HEALTH CLUB LOCATIONS!



(603) 279-0411  
WWW.THEFITNESSEDDGENH.COM

**Birch Hill**  
BOOKKEEPING & CONSULTING

James W. Hill  
Owner

Mailing Address:

Post Office Box 101

Moultonborough, NH 03254-0101

Cell: 603-476-2521

Fax: 1-877-495-6388

*Have Laptop, Will Travel...*

email: [jim@birchhill.net](mailto:jim@birchhill.net)

Visit us online at [www.birchhill.net](http://www.birchhill.net)



## Permanent Staff

**Thom Beaulieu** (Managing Director/Sound and Lighting Designer) is pleased to be a part of the staff at the Playhouse. An award-winning lighting and sound designer, Thom holds a BFA in Drama from Carnegie Mellon University's School of Drama, as well as an MS in Physics from Georgia State University. He enjoys golf, boating, and poker, and lives in New Hampton with his wife Meredith and daughter Molly.

**RJ Bogues** (Assistant Technical Director) is excited to be here for his first season as an ATD, as well as his third season at the Playhouse. He is a WCSU alumni originally from small town New Fairfield, CT. He has worked previously as a carpenter in UBU at WCSU, *Spamalot* at Musicals at Richter, and *Godspell* at ACT of CT, with some small technical director credits in *Shrek the Musical* at Musicals at Richter, and *The Nightman Cometh* at CCSU. Randal has also acted on occasion, appearing in shows such as *Glorious!* (Bellhop 1) in the Playhouse's 2021 season. He thanks you for coming, and hopes that you will enjoy what the Winnepesaukee Playhouse's 20th Season has to offer!

**Amanda Dickinson** (Production Manager) came to the Playhouse from a background in healthcare, having practiced medical Speech-Language Pathology for 18 years. She holds a Bachelor of Science in Speech and Hearing from Elmira College in New York, and a Master of Science in Speech-Language Pathology from The MGH Institute of Health Professions in Boston. After joining the Playhouse in 2017 as a community theatre actor, Amanda went on to work with the Professional Company and the WP Education Department, while also serving for five years on the Winni Players Community Theatre steering committee. Favorite Playhouse credits include *M\*A\*S\*H* (Bridget), *Company* (Assistant Stage Manager), *Steel Magnolias* (Producer, Properties Coordinator), *The Complete Works of William Shakespeare (Abridged) [Revised]* (Wardrobe Supervisor/Running Crew), *The Wolves* (Stage Manager), *Oedipus Rex* (Stage Manager), and *[title of show]* (Stage Manager). Amanda joined the permanent Playhouse staff as Production Manager in 2023.

**Donna Findlay** (Bookkeeper) joined the Playhouse in 2015 after retiring from a 21 year career at a public utility in Manchester, NH and spending 5 years as a para-educator in the Inter-Lakes School District here in Meredith. She gives unending love and gratitude to Jim, Cortland, John, and grandson Jimmy.

**Matthew Hutchens** (Technical Director) started at the Winnepesaukee Playhouse originally as a carpenter for 2021 season. He has stuck with us since then as the assistant technical director for 2022 and is now the technical director for 2023. Matthew's goals, as the technical director, are to teach others while also creating beautiful sets for the stage. This will be his first full season as a TD.

the  
**WINNIPESAUKEE**  
playhouse

FOLLOW US ON



**Construction Management  
Construction Services**



**"Progress on Purpose"**  
Since 1969

51 Church Street, Laconia, NH  
www.bpsnh.com 603-524-3411



## Permanent Staff

**Cory Lawson** (Director/Director of Education and Community Engagement) is a professional actor, director, and theatre educator. He is currently working on his dissertation for his Ph.D. in Interdisciplinary Fine Arts at Texas Tech University, where his research is in theatre festivals and devised works. He has devised and performed in several shows with the Dutch theatre company Orkater, both in Amsterdam and New York City. Cory has also created work with The Living Theatre and helped to found Ready Set Go Theatre, which created the world's first Shakespeare Webisodes. As an actor and director, Cory's work has been seen professionally in New York as well as in regional theatres across the country. He has also appeared on screen in national commercials and various television episodes. Cory holds his MFA in acting from The New School for Drama and a BA in Theatre: Performance and Dramaturgy from Roanoke College. He has served as the Associate Director of Education and Outreach at the Alabama Shakespeare Festival, the Artistic Director of The Burktech Players (a neurodiverse theatre company in Lubbock, Texas), and the Director of The Wallace Weekend Players in Levelland, Texas. Most recently, Cory co-founded and served as the Artistic Director of The Outside In Festival, a new nonprofit Theatre Festival showcasing devised works through the fostering and presentation of both national and international artists. He's thrilled to join the leadership team at the Winnepesaukee Playhouse and is looking forward to meeting and working with everyone in the community.

**Timothy L'Ecuyer** (he/him/his) (Artistic Director) is thrilled and grateful to begin a new chapter at the Winnepesaukee Playhouse, having previously served as Director of Education from 2014 to 2022. His directing credits at the Playhouse include *The 39 Steps*, *Red, Grace and Glorie*, *A Midsummer Night's Dream*, *The Rocky Horror Show*, *Mary's Wedding*, *California Suite*, *The Complete Works of William Shakespeare (Abridged) [Revised]*, *SHOUT! The Mod Musical*, *Sweeney Todd*, and fourteen productions with the Education Department. Mr. L'Ecuyer has BAs in theatre and English from Keene State College as well as an MA and MFA in theatre education and applied theatre from Emerson College. He is a former president of the New Hampshire Educational Theatre Guild, an Equity stage manager, and a Teaching Lecturer in the Music, Theatre and Dance Department at Plymouth State University, where he directed *Our Town*, *An Enemy of the People*, *The Curious Incident of the Dog in the Night-Time*, and *Urinetown*. He has worked with many New Hampshire and Boston area theatres including American Stage Festival, Barnstormers, theatre KAPOW, Peacock Players, StageCoach Productions, Greater Boston Stage Company, the Nora Theatre Company, and Underground Railway Theater. He would like to thank his parents, Peter and Linda L'Ecuyer for (among many other things) supporting the Playhouse in NH Gives this year. He'd also like to thank the following people for their support: Gail Barrett, Laurie Felgate, Daniel Patterson, Mike Richardson, Sharon and Terry Richardson, Renée Speltz, Thomas Staley, and Laura Stephan. [timothylecuyer.com](http://timothylecuyer.com)

**Lesley Pankhurst** (Patron and Company Services Director) is one of the founders of the Winnepesaukee Playhouse. Lesley is a graduate of Wellesley College with an MA in Arts Administration and Cultural Policy from Goldsmiths College, University of London. In addition to serving as the Marketing Director of the Playhouse for its first 13 years, she has also designed costumes for many of its productions and has twice been the recipient of the NH Theatre Award for Best Professional Costume Design for *Two Rooms* (2007) and *The Glass Menagerie* (2008). She is the proud mom to her daughter, Sophie, cat Sasha, and wife to the proudly retired, Neil. Much love and appreciation to Lyn Osborne Winter.

# 98.3 Frank<sup>fm</sup>™

**THE SOUNDTRACK OF THE LAKES REGION!**

## The community we **service** is the community we **support**.

We thank our local communities for trusting us to be there when they need us, and are proud to do our part in supporting them.



Reliable Deliveries | Responsive Service


[www.deadriverr.com](http://www.deadriverr.com)



NEW  
HAMPTON  
SCHOOL

## *Where Aspiring Artists* **TAKE CENTER STAGE**

Whether the arts are a passion or a hobby, there are ample opportunities for professional-level learning at New Hampton School. From the stage to the recording studio, at the ceramics wheel or in the animation lab, our students create in every corner of campus.

 [www.newhampton.org](http://www.newhampton.org)





## **A FULL SERVICE LAW FIRM**

Estate Planning and Probate  
Business & Non-Profit  
Real Estate  
Employment & Labor  
Municipal

Land Use & Development  
Telecommunications  
Litigation  
Environmental  
Utility

COUNSELING INDIVIDUALS, BUSINESSES,  
ORGANIZATIONS AND MUNICIPALITIES  
THROUGHOUT NEW HAMPSHIRE

DONAHUE, TUCKER & CIANDELLA, PLLC

**PROUDLY SUPPORTING THE ARTS  
FOR OVER 30 YEARS**

OFFICES IN MEREDITH, CONCORD, PORTSMOUTH, & EXETER, NH

**WWW.DTCLAWYERS.COM**

**1-800-566-0506**

# Thanks

*Thank you for recognizing that art matters.  
It takes everyone working together to continue to create great theatre.*

## *Directors' Circle*

---

### **\$25,000+**

Anonymous  
Anonymous  
Paul and Sharon Steinwachs

### **\$10,000+**

Anonymous  
The Baker Family  
Beth and Rich Compson  
Richard and Carol Gerken  
Jodie Herbert and Rusty McLearn  
NH Charitable Foundation  
New Hampshire State Council  
on the Arts  
The Shubert Foundation

### **\$5,000+**

Laura and Gary Stephan

### **\$2,500+**

Gloria and Irving Fox  
Ellie Gordon  
The Greater Lakes Region  
Children's Auction  
John & Muff  
Ambassador Paul Speltz and  
Renee Speltz  
Anita E. Springer

### **\$1,000+**

Anonymous  
Ray and Karen Abramson  
Marc and Carol Bard  
Eden and Nate Bowditch  
Mike and Lisa Brien  
Jim and Leslie Chapman and  
Meredith Whole Living Center  
Judy Cookman  
Ray Craigie and Pam Smarling  
Chuck and Diane Fray  
Liz and Bob Gabel  
James Whittredge Hill  
Paul and Beverly Jaques  
David and Joanne Jeannette  
Gerald Kadish  
John and Margie Kreidler  
Louise and Sandy McGinnes  
Susan and Douglas McLane  
Sharon and Tom Messmore  
Debra Nash  
Kate O'Brien  
Neil and Lesley Pankhurst  
Barbara Pitsch  
John Robbins  
Jim and Judi Rogato  
Jason and Deanne Sargent  
Carolyn S Scattergood  
Graham and Julia Thomson  
Barbara and Gordon Webb  
Whitney Werner  
Barbara Zeckhausen



# *to YOU!*

## *Actors' Circle*

---

### **\$500+**

Michael Ames/Half Moon  
Enterprises, Inc  
James Burke  
Kelly Dunn  
The Findlay Family  
John and Carol Ford  
Katie Guilmett  
Susanna High  
David and Patricia Immen  
The Denny Knight Family  
Fund of the Princeton Area  
Community Foundation  
Barbara & Chris  
Maciejewski  
Joan and David Martin  
Maurice and Rhoda Miller  
Endowment Fund  
New Hampshire Center  
for Nonprofits  
Mark and Susan Primeau  
Robert and Margie Sallies  
Gil Schohan  
Robert and Anne Shaw  
Judy and Steve Siegel  
David Stamps and  
Judith Buswell  
Bruce and Betsy Thomas  
Annie and Chris Weinmann  
Mr. & Mrs. Brian Winslow

### **\$250+**

Anonymous  
Tom and Patricia Barrick  
Linda and John Browne  
Bob & Elaine Carangelo  
Ken Chapman and  
Carol Lowden  
James and Bonnie Doherty  
Graham Edmondson  
Jamie Gegerson

Robert and Eileen Gosselin  
Don and Lou Ann Harris  
Elizabeth Immen  
Joseph Kelaghan  
Charlotte Lee and  
Ron Turbayne  
Brad and Lynn Leighton  
Deborah Leonard Kosits  
Kathleen Lyons  
Meredith Rotary  
Alan and Carol Metevia  
Kaitlin O'Neil  
Rosemary Pizzuti  
Deborah Seid and  
Tom Green  
Edward Sonn and Sharon  
Forde  
The Truesdale Family  
Deborah & Paul Walker  
Mark and Kathleen  
Whitehead  
Gregg Williams

### **\$100+**

Anonymous  
Anonymous  
Anonymous  
Anonymous  
Anonymous  
Anonymous  
Anonymous  
Miriam Adams  
Amazon Smile Foundation  
Christine and Carlos  
Anderson  
Cecile Andrews  
Delaney Andrews and  
Dawson Ellis  
Rick and Rae Andrews  
Gail Barrett

Chuck and Sue Bates  
David Berard  
George Berman  
Martin Berman  
Craig Betchart  
Tony and Terri Bouchard  
Steve and Judy Brown  
Jay Buckley  
Sarah Bunkley and  
Richard Smith  
Alison and Christopher  
Casko  
Jean and Don Clarke  
Robert Connors  
Abraham and Lynn T.  
Dadian  
Cara David  
Constance Dehnel  
Alexa Dembiec  
Diane G. Dion  
Martha Dolben  
Ann Donahue  
Tami and Mark Donohoe  
Carol and Robert Doretti  
Denise Doyle  
Kim Duncan  
Georgene Fabian  
Laura Felgate  
Andrew Fleischmann  
Lisa Furlong  
Leo Glasheen  
Lynn Goddard  
Jean Halfmann  
J William Harris  
Julie Hart  
Mark Johnson  
Susan Karsten  
Ira and Lynn Keltz  
Bernice and Bernie Kramer  
Nancy Kubecka  
Maureen Kuharic  
Peter and Linda L'Ecuyer  
Nancy and Newbold LeRoy

# *Actors' Circle (continued)*

|                            |                            |                           |
|----------------------------|----------------------------|---------------------------|
| Marc and Carroll Levey     | William Batchelder         | Sara Tirrell              |
| Lisa Lovett                | Richard and Rosalie        | Margaret Turner           |
| John and Carol Low         | Beaulieu                   | Deborah Vargo             |
| Peter and Maryann Magoun   | Andy Bedford               | Rafael Vazquez            |
| Bob Maloney and            | Karen and Paul Bemis       | Lindsay Weiner            |
| Bonnie Hunt                | Barbara and Charles        | Wellesley College Theatre |
| Jonathan Marro             | Birdsey                    | Tim and Anne Whiting      |
| William and Stefanie Marsh | Suzanne Caroselli          | Marjory Wilkinson         |
| Dr. Warren & Annette       | Judith Clayman             | John and Karen Yeigh      |
| Mason                      | The Cottages of Wolfeboro  |                           |
| Greg & Regis Miller        | Emily Dahl                 | <i>All Other Gifts</i>    |
| Peg and John Mongiello     | Hannah Davidson            | Anonymous                 |
| Paul Mroccka               | David and Sylvia Detscher  | Elizabeth Ahl             |
| Dr Noe                     | Thomas Dixon and           | Dalia Aleman              |
| Margaret and Stephen Ober  | Annmarie Karayianes        | Carolyn Ames              |
| Deborah Osborne            | Bob Foster and Mike Gillis | Catherine Asmar           |
| David and Fredda Osman     | Elizabeth Geiler           | Eileen Bates-Bordies      |
| Charlotte Otto             | Casey and Drew Gerken      | Arnold Benson             |
| A Parnes                   | Bryan Graf                 | Roger and Deborah Blake   |
| Daniel Patterson           | Rebecca Gregoire           | Roberta Brayer            |
| Mark Pettie and            | Betty Heaney               | Kim Bruneau               |
| Sue Molitor                | Andrew Hendrick            | Elizabeth Bulasko         |
| Clayton Phillips           | Nancy Henn                 | Matt, Carey and           |
| John and Dorothy Piquado   | Andrea Houghton            | Emma Cahoon               |
| Walter and Christine       | Christopher Kiley          | Kevin and Mary Ellen      |
| Powers                     | Constance Kuekan           | Canty                     |
| Gail Putnam                | Eliza J Leadbeater         | Janice Cardarelli         |
| Mike Richardson            | Jonathan and Glenna Lee    | Nancy Carsen              |
| Sharon Richardson          | Marilyn Lezberg            | Bill Charles              |
| The Rickenbachs            | Charlene Malek             | Rachel Chiffer            |
| Mary and Dave Rogers       | Jessie Marden              | Tyler Christie            |
| Joe Sampson                | Joel Mercier               | Paul Ciborowski           |
| Robert Sawyer              | Monica Michalsky &         | Gay Daigle                |
| Melissa Shakun             | Tom Stankosky              | Alexander Davis           |
| Chris Slater               | Gerard and Joanne Morin    | Beth Day                  |
| John Soha                  | Sean and Helen Murphy      | Judith Dean               |
| Larry Spencer              | Savannah Muzzey            | Jack Degange              |
| Thomas Staley              | Antoinette Olden           | Gary and Lisa DiMartino   |
| Judith Stern               | Jeffery & Jayne Peck       | Maryann Dodge             |
| Samantha Tella             | Andrew Pinard              | Clark Dumont              |
| Joyce Tyler                | Tracy and Mark Renaud      | Jean Etter                |
| Barbara Ulm                | Rebecca Rigden             | Darlene Fritz             |
| John and Karen Warren      |                            | Christina Fuller          |
| Hazel Zimmer               | Dennis and Kerry           | Frank Garcia              |
|                            | Schneider                  | Virginia Gassman          |
|                            | Steven B. Schwartz and     | Sandra Greenberg          |
|                            | Paula A. Leonard-Schwartz  | Jennifer A Grunbeck       |
|                            | Robert Sears               | Eric Halvorson            |
|                            | Jack and Doreen Sheppard   | Madeline Hanafin          |
|                            | Sally Sibulkin             | Hannaford Community       |
| <b>\$50+</b>               |                            |                           |
| Anonymous                  |                            |                           |
| Donna Acox                 |                            |                           |
| Marcy Alkalay              |                            |                           |
| Kay Anderson               |                            |                           |

Bag Program  
 Alison Hildebrand  
 Joia Hughes  
 Anne Ingard  
 Amanda Jennison-Sousa  
 JM  
 Eliot Johnson  
 Chris Jones  
 Karen Kharitonov  
 Valerie and Karl Kimball  
 Daniel Klingenstein  
 Cory Lawson  
 Nathalie Leclair  
 Michelle Levinson  
 Denise Livingstone  
 Thad Long  
 Cassandra Mason  
 Deirdre A Meehan  
 Michelle Minot  
 Suzanne Morrissey  
 Junette Pearson  
 Penny and Paul  
 Michael Portrie  
 Alan Provance  
 Elizabeth Ricci  
 Ulysses Roebuck  
 Veronica Rosa  
 David and Christine Roy  
 Stuart W Russell Jr  
 Angela Santamaria  
 Janine M. Schifino  
 John and Linda Shelley

Jennifer Simon  
 Lori Smock-Joyal  
 Evan Sohm  
 Susan Swain  
 Kathleen Sweeney  
 Jennifer Szendre  
 Allison Szklarz  
 Judy Taylor  
 Clayton Titus  
 Christa Tsechrintis  
 Cynthia Unangst  
 Marie Valliere  
 Valerie Verge  
 Patricia Weston  
 Amanda Whitworth  
 Shelley Wieler  
 Lowell Williams  
 Pamela Williams  
 Lorna Zammett

*Donation list dated  
 7/23/22 - 7/22/23*

## **Thank you to the following donors who have sponsored new chairs for the amphitheatre!**

Barbara and Charles Birdsey  
 Eden and Nate Bowditch  
 Mike and Lisa Brien  
 Steve and Judy Brown  
 The Cottages of Wolfefboro  
 Alexa Dembiec  
 James and Bonnie Doherty  
 Ann Donahue  
 Kelly Dunn  
 Dawson Ellis and  
 Delaney Andrews  
 Chuck and Diane Fray  
 Liz and Bob Gabel  
 Richard and Carol Gerken  
 Rebecca Gregoire  
 James Whittredge Hill  
 Charlene Malek  
 Jessie Marden  
 Sean and Helen Murphy  
 Savannah Muzzey  
 Kaitlin O'Neil  
 Charlotte Otto  
 Neil and Lesley Pankhurst  
 Carolyn S Scattergood  
 Chris Slater  
 Ambassador Paul Speltz and  
 Renee Speltz  
 Monica Michalsky and Tom Stankosky  
 Lydia and Nathan Torr  
 John and Muff Walker  
 Barbara and Gordon Webb  
 Mr. & Mrs. Brian Winslow  
 John and Karen Yeigh  
 Barbara Zeckhausen  
 Wellesley College Theatre

# ***Morgenstern Sustainers***

Anonymous  
 Anonymous  
 John and Linda Browne  
 J.W. Hill, Consultant  
 Sarah Bunkley and  
 Richard Smith

Alison and Christopher Casko  
 Katie Guilmett  
 Ira and Lynn Keltz  
 Susan and Douglas McLane  
 Kaitlin O'Neil  
 Joe Sampson

Jason and Deanne Sargent  
 Mary and Dave Rogers  
 Graham and Julia Thomson  
 John and Muff Walker  
 Barbara and Gordon Webb  
 Brian Winslow

These are people who participate in the  
 continued success of the Playhouse through their recurring  
 gifts, and we are so grateful for the ongoing support.

# ***We appreciate your support!***

## **Did you know that in typical years ticket sales only account for about 50% of what it takes to run the Winnepesaukee Playhouse?**

Sadly, these have not been typical years recently. But patrons just like you have been so supportive and generous. No gift to the Playhouse is too small, and every donation helps us keep artists employed and audiences entertained throughout the year. If you would like to become a donor, or make an additional donation, your tax-deductible gift will be instrumental in helping to ensure the Playhouse can continue to provide the level of programming you have come to expect.

You can make a donation today by visiting the box office, calling us at (603) 279-0333, or visiting our website: [www.winnepesaukeeplayhouse.org](http://www.winnepesaukeeplayhouse.org)

## **Is it time to take your involvement to the next level?**

- You could make a one-time gift of \$100
- Join the Morgenstern Sustainers with a monthly gift of \$10
- Join our Directors' Circle at \$1,000 a year (\$85/month)

You can be the one to inspire, engage, and entertain the community by making a tax-deductible gift. You can mail us a check, use your credit card online or over the phone, or stop by the box office today.

## **There are even more creative ways to support the Winnepesaukee Playhouse!**

Have you ever considered including the Winnepesaukee Playhouse in your will? A gift through your will or estate plan enables you to support our mission and make a difference in the future of the Winnepesaukee Playhouse. Did you know you can use your IRA required minimum distribution to make a tax-free donation to a non-profit like the Winnepesaukee Playhouse? Questions? Speak with your financial advisor, or contact Thom Beaulieu at 603-279-0333 or [thom@winniplayhouse.org](mailto:thom@winniplayhouse.org).





Logos  
Branding  
Graphic Design & More

**LogoFurther.com**

ted@logofurther.com

603.562.6909



**JOE WALKER**  
Marketing Services

"Vision without action is a daydream.  
Action without vision is a nightmare."

-Japanese Proverb

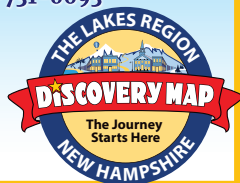
*Does your business have vision?*

- Strategic business plan development
- Promotional / advertising plans
- Marketing plans
- Non-profit fundraising plans
- Presentations / guest speaking

JoeWalkerMarketing.com  
info@joewalkermarketing.com

603-731-0693

**Franchisee**  
Call 603-369-4376  
to advertise.



## CHRISTOPHER P. WILLIAMS ARCHITECTS, PLLC

PO Box 703 • Meredith, NH 03253 • 603-279-6513  
[www.cpwarchitects.com](http://www.cpwarchitects.com)



Our award winning firm has provided innovative and environmentally sensitive design solutions since 1984. We specialize in sustainable building practices and offer expertise in incorporating green systems into client projects to enhance and protect the ecosystem, and conserve natural resources. We strive to design buildings that fit into their cultural context and environment.



# MIRACLE FARMS

## LANDSCAPE CONTRACTORS

Moultonborough, New Hampshire (888)288-8252



*Extraordinary landscapes begin here!*

Landscaping

Maintenance

Hardscapes

Mulch/Loam/Compost

Firewood Dry/Green

603-253-9292

[www.miraclefarmslandscaping.com](http://www.miraclefarmslandscaping.com)



The Winnepesaukee Playhouse is grateful to the following foundations for their support.



STEINWACHS FAMILY  
FOUNDATION



New Hampshire  
State Council on the Arts



NEW HAMPSHIRE  
CHARITABLE FOUNDATION

The Winnepesaukee Playhouse is supported in part by a grant from the New Hampshire State Council on the Arts & the National Endowment for the Arts.

# Our Real Estate Goals are simple....

***They're Yours!***



**Scott Knowles**

603.455.7751

scottknowles@metrocast.net

**Chris Adams**

603.393.7993

adamschris195@gmail.com

**Chris Kelly**

603.677.2182

chriskelly@baysidenh.net



**We have everything you need in real estate**

208 Daniel Webster Highway, Meredith, NH 03253

(603) 279-0079

604 Main Street, Laconia, NH 03246

(603) 527-8200

[www.baysideplatinumgroup.com](http://www.baysideplatinumgroup.com)





the  
**WINNIPESAUKEE**  
playhouse

20<sup>TH</sup> SEASON



CELEBRATION



# Cinderella

A Traditional English Panto  
By Neil Pankhurst

**DECEMBER 15-31**

SPONSOR:

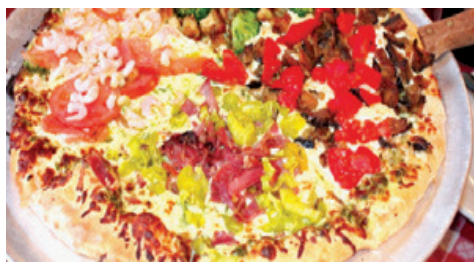
*Birch Hill*  
BOOKKEEPING & CONSULTING

[winnepesaukeeplayhouse.org](http://winnepesaukeeplayhouse.org)

603.279.0333 | 33 Footlight Circle, Meredith NH 03253



*Very Music Very Italian & Very Good!*



**Celebrating  
34 Years!**

# *Giuseppe's* *Pizzeria & Ristorante*



**This unique and popular restaurant is  
one of the Lakes Region's most loved since 1989!**  
Serving Award-Winning Gourmet Pizza, Pasta, Seafood,  
Steak, Chicken, Veal, Vegetarian, Vegan, Gluten-Free,  
Soup, Salads, Desserts, Cappuccino,  
Beer, and a fabulous selection of Wine and Spirits!

**Lunch and Dinner Daily**  
***Reservations are highly recommended and greatly appreciated!***

Located on the corner of Routes 3 & 25  
Mill Falls Marketplace, Meredith, NH

**Call (603) 279-3313**  
**For Reservations & Take Out**  
**Visit [giuseppesnh.com](http://giuseppesnh.com)**



**LAKES REGION  
COMPUTER**

**Celebrating 25 Years in Business!**  
**A ONE STOP TECH SHOP**

Apple • PC • Verizon • Repairs  
IT Business Services

## **Visit Our Retail Store!**

- Verizon Authorized Retailer
- Apple Premium Service Provider
- Selling Apple, PC, Phones & Accessories
- Phone and Computer Repairs

## **IT Business Services Include:**

- Computer Systems and Network Installations
- Systems Monitoring and Management
- Backup and Disaster Recovery
- Security and Compliance
- Cloud Solutions
- IT Inventory and Planning
- On-Site and Remote Support
- Wireless Network Planning and Installations
- Security Camera Installations
- Nextiva Business Phone Systems

12 Main Street, Center Harbor, NH 03226

Phone: 603.253.9847 • Website: [lakesregioncomputer.com](http://lakesregioncomputer.com)

Follow us!  [lakesregioncomputer](https://www.instagram.com/lakesregioncomputer)  [lakesregioncomputer](https://www.facebook.com/lakesregioncomputer)