

the  
**WINNIPESAUKEE**  
playhouse

20<sup>TH</sup> SEASON



CELEBRATION



# Cinderella

A Traditional English Panto  
By Neil Pankhurst

**DECEMBER 15-31**

SPONSOR:

*Birch Hill*  
BOOKKEEPING & CONSULTING

[winnepesaukeeplayhouse.org](http://winnepesaukeeplayhouse.org)

603.279.0333 | 33 Footlight Circle, Meredith NH 03253



# Meredith Marina

603.279.7921



Scan Me  
for  
Directions!

## BOAT RENTALS

### & Jet-Ski Rentals



Water-Ski  
& Tubing  
Packages  
Available!

## Make A Splash!



One of the largest  
**BOAT RENTAL FLEETS**  
on Lake Winnepesaukee!



### NEW & USED BOAT SALES

*Hurricane*

*tige*  
BOATS

*Sweetwater*

*Sanpan*

*Aqua Patio*

*Premier*  
Pontoon

MARINE STORE & BOATING ACCESSORIES

603-279-7921



**BOAT SALES • BROKERAGE • VALET • SERVICE • RENTALS • STORAGE**

2 Bayshore Drive, Meredith, NH • Meredith Bay • Lake Winnepesaukee



**Meredith  
Marina**

**www.meredithmarina.com**

*Board of Trustees*

Renee Speltz  
Chair  
Retired Mental Health Counselor and  
Consultant

Bill Bald  
Vice Chair  
President  
Melcher and Prescott Insurance

Raymond Abramson, CPA  
Treasurer  
Owner  
Abramson & Company, LLC

Kaitlin M. O’Neil  
Secretary  
Attorney  
Normandin, Cheney & O’Neil, PLLC

*Members at Large*

Eden Unger Bowditch  
Author and Lecturer  
Plymouth State University

Julie Hirshan Hart  
Editor  
The Laconia Daily Sun

Lesley Pankhurst  
Co-Founder and Patron and  
Company Services Director  
The Winnepesaukee Playhouse

Sean C. Sullivan, CPA  
Business Consultant

Kathleen Sweeney, CPA  
Owner  
Kathleen Sweeney CPA

Julia Thomson  
Legal Consultant



Artistic Director.....Timothy L’Ecuyer  
Managing Director.....Thom Beaulieu  
Patron & Company Services Director.....Lesley Pankhurst  
Dir. of Education & Community Engagement.....Cory Lawson  
Production Manager.....Amanda Dickinson  
Technical Director.....Matthew Hutchens  
Assistant Technical Director.....RJ Bogues  
Bookkeeper.....Donna Findlay

*The Winnepesaukee Playhouse  
has many volunteer  
opportunities. To find out how  
you can become a volunteer,  
contact us at  
info@winnipplayhouse.org*

*Proud Members of*

NEW HAMPSHIRE

**PROFESSIONAL THEATRE**  
ASSOCIATION

WWW.NHPTA.ORG INFO@NHPTA.ORG

The Winnepesaukee Playhouse  
33 Footlight Circle, Meredith NH 03253  
Tel. (603) 279-0333

**www.winnepesaukeeplayhouse.org**

# For Your Information

**Please** turn your cell phone and any other electronic devices completely off. Leaving them on silent or vibrate may interfere with our communication systems and interrupt the flow of the performance.

**Please** refrain from photography or recordings of any kind, as this violates our royalty agreements.

**Please** note that if you must, in an emergency, use the restrooms during the performance, our House Manager will return you to your seat at an appropriate break in the performance.

**Please** be sure you can hear us! For our theatre patrons who have experienced varying degrees of hearing impairment, please take advantage of our state-of-the-art **Assisted Listening System**.

*For indoor performances:* If you are a hearing aid user who has a tele-coil function in your hearing aid you will be able to access our system directly after turning on that function. You may need to contact your hearing aid provider to inquire about the tele-coil in your particular hearing aid and ensure that it has been activated and instructed on how to turn it on when you are in the theatre. For patrons without tele-coil hearing aids, we have a limited number of headsets available on a first-come, first-served basis. Please see the box office if you would like to use one.

The indoor Assisted Listening System is made possible by a generous donation from The Maurice and Rhoda Miller Endowment Fund.

*For outdoor performances:* All actors will be amplified. If you'd like further amplification, headsets are available on a first-come, first-served bases from our reception table.

**Please** keep in touch! Visit our website at [www.winnipesaukeeplayhouse.org](http://www.winnipesaukeeplayhouse.org) to join our email list. You can also follow us on Facebook, Instagram, and Twitter.



## Dear Friends:

On behalf of Managing Director Thom Beaulieu, myself, and everyone at the Winnepesaukee Playhouse, thank you for joining us for our 20th season! All three departments of the Playhouse—professional, community, and education—have fantastic things planned for 2023 and I am honored to have the privilege of helping to shepherd all of them to the stage in my first season as Artistic Director.



Marking our 20th season is an opportunity for all of us to reflect on the path that brought us here. It would be impossible for me to do so without mentioning the deep gratitude I have for the unflagging effort of my predecessor, Founding Artistic Director Neil Pankhurst. Working with him for the past nine years has prepared me to step up into this position in a way that nothing else could. I am additionally grateful for his continued support and can't wait to welcome him back to write and direct this year's holiday Panto *Cinderella*.

This season revives some Playhouse favorites: American classics, a smash hit ABBA jukebox musical, the poignant story of the friendship between a pig and a spider that many of us grew up loving, and more. It also honors and extends the Playhouse's long-standing tradition of bringing you an exciting variety of work transcending time, geography, and genre. Bringing all of this to life for you are talented teams of theatre artists, some of whose work you already know and love as well as extraordinary professionals, students, and community members sharing their work with us for the first time.

An anniversary like this is also an opportunity to turn our eyes to the future and think about what might be. This year's transitions in leadership, particularly the addition of Amanda Dickinson and Cory Lawson to our staff, have already had invigorating effects. In the coming months and years, we will also shake out the cobwebs by bringing you new programming, new initiatives, and new ways of bringing epic storytelling to our intimate spaces. We will also rededicate ourselves to what works best.

Whether you are a longtime Playhouse supporter or are joining us for the first time, we are thrilled that you have chosen to be part of our community. We are more excited than ever to walk into the future together.

--Timothy L'Ecuyer  
Artistic Director

# MOULTON FARM

Meredith, N.H.



Farm Market Open Daily

Mid-March Through Dec. 31

DRIVEWAYS • WALKWAYS  
PARKING LOTS • ROADS



603-279-1499

[www.bryantpaving.com](http://www.bryantpaving.com)



FIND YOUR ESCAPE!

DOWNTOWN MEREDITH

603 279.3905

312 Daniel Webster Hwy

DOWNTOWN LACONIA

603 409.6756

630 Main St.

[www.innisfreebookshop.com](http://www.innisfreebookshop.com)

## KATHLEEN E. SWEENEY

CERTIFIED PUBLIC ACCOUNTANT

P.O. Box 1259  
Center Harbor, NH 03226  
(603) 253-4011  
Fax (603) 253-4051

P.O. Box 1187  
North Conway, NH 03860  
(603) 356-7036  
Fax (603) 733-5250

[ksweeney@metrocast.net](mailto:ksweeney@metrocast.net)  
[www.kathleensweeneycpa.com](http://www.kathleensweeneycpa.com)

Thank you for voting us best in the lakes region



Family Owned & Operated Since 1946 • (603) 524-1417 • [www.foleyoilco.com](http://www.foleyoilco.com)

CELEBRATING  
**75** YEARS  
1946-2021

Heating Oils  
Propane  
Diesel  
24-Hour Emergency Service  
Boiler Installations  
Preventive Maintenance

*Mello  
Moose*  
**COFFEE HOUSE**

136 Daniel Webster Hwy, Meredith  
(603) 677-7037

Great coffee, breakfast sandwiches, and  
fresh baked goods to start your day!

  
**TWIN BARN'S**  
BREWING CO.

194 Daniel Webster Hwy  
Meredith



**Bring Ticket Stub To  
Twin Barns for 50%  
off apps**

*We are thrilled to support  
The Winnepesaukee Playhouse*

Temple B'nai Israel  
Laconia, NH



TBINH.ORG

*Prescott*  *Farm*  
Environmental Education Center



*After the play—  
we'll help you find ways to play  
outside!*



928 White Oaks Road, Laconia  
603.366.5695 [prescottfarm.org](http://prescottfarm.org)

Before the Play  
enjoy dinner at



or

  
STEAKS & SEAFOOD

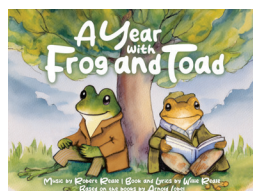
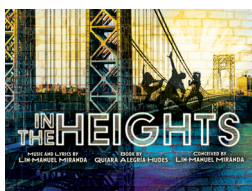
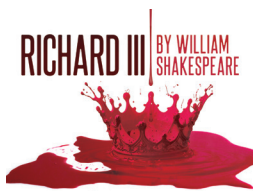
253-4762  
Center Harbor

524-9373  
Lakeport

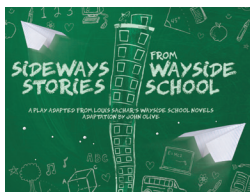
[www.magicfoodsrestaurantgroup.com](http://www.magicfoodsrestaurantgroup.com)

# Coming to the stage in 2024!

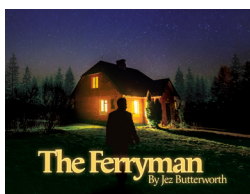
## The Professional Company



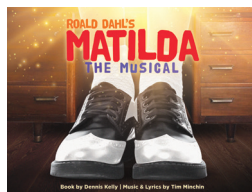
## The Education Department



## The Winni Players Community Theatre



## An Education Department and Community Theatre Co-Production



## Special Events



# 2024 Subscriptions & Flex Passes

**ON SALE NOW!**



## 2024 All Access Pass \$325.00

One ticket to each of the 13 productions/events in the 2024 season (including the special events: *On the Exhale* and *ImprovOlympics*). Additional 10% discount on all other tickets purchased for 2024 productions/events.

## 2024 Professional Summer Pass \$210.00

One ticket to each of the five (5) professional productions (*Jersey Boys*, *Witch*, *La Cage aux Folles*, *Richard III*, *In the Heights*). Additional 5% discount on all other tickets purchased for 2024 productions/events.

## 2024 Professional Summer Balcony Pass \$115.00

One ticket to each of the five (5) professional productions (*Jersey Boys*, *Witch*, *La Cage aux Folles*, *Richard III*, *In the Heights*). Seating is limited to the front row of the balcony only. Additional 5% discount on all other tickets purchased for 2024 productions/events.

## 2024 Flex Pass \$220.00

Five tickets to use however you like. Mix and match performances or productions in any combination.

### **\*The Fine Print:**

Passes (and any associated discounts) are not redeemable for rentals or other events produced by a third party. Seats must be reserved in advance and are subject to availability. There are no additional fees associated with redeeming subscription passes. Any unused portion of subscription passes may not be redeemed for cash or credit to your account.

**Stop by the box office or visit [www.winnepesaukeeplayhouse.org](http://www.winnepesaukeeplayhouse.org)  
to purchase a 2024 subscription**

**NORMANDIN, CHENEY & O'NEIL, PLLC**  
ATTORNEYS AT LAW

Experience you can rely on. Advice you can trust.

*Wills, Trusts and  
Estate Planning*

*Real Estate and  
Land Use*

*Commercial and  
Corporate Law*

*Injury Law*

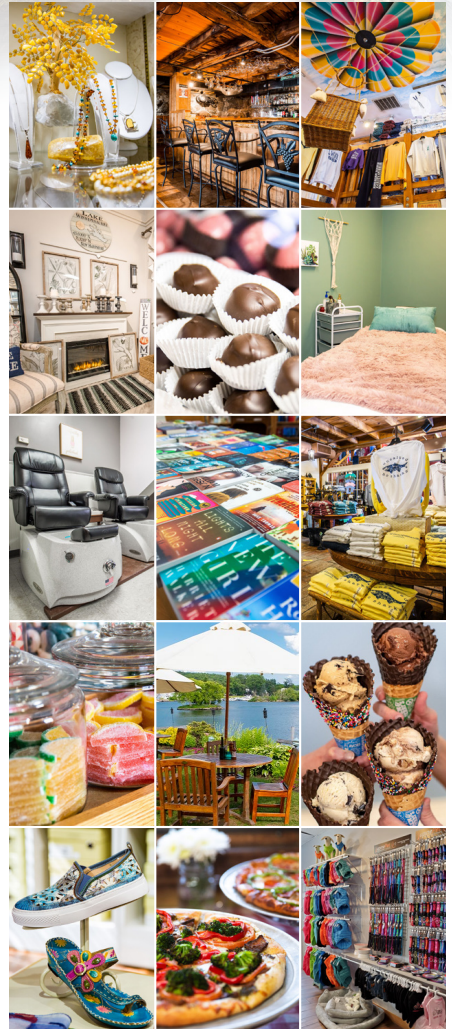
*Civil and Criminal  
Litigation*

**603-524-4380**  
**(or 1-800-529-0631)**

**www.ncolaw.com**

**213 Union Avenue**  
**P.O. Box 575**  
**Laconia, New Hampshire**  
**03247**

**SHOP. DINE. EXPLORE.**



*Lakes Region's Premier Shopping Destination*

**Unique Marketplace Shops**  
**5 Distinctive Restaurants • 4 Inns**  
**Boardwalk, Park & Sculpture Walk**  
**Friday Night Music - July & August**

**millfalls.com/shop • Routes 3 & 25 Meredith, NH**



**GOLDEN VIEW**  
HEALTH CARE CENTER  
*A Non-Profit Community*

## *The Retreat at Golden View*

Short-stay rehab conveniently located in the Lakes Region



You have a choice! Golden View works with hospitals throughout New England, so no matter where your hospital stay may be, you can recover close to home!

The Retreat features private suites with private bathrooms, as well as a tailored therapy plan. We are contracted with many private insurances and Medicare.

To learn more or prebook your stay, please call our admissions department at 279-8111.

**Assisted Living • Long-Term Living • Short-Stay Rehab**

Meredith, NH • 279-8111 • [www.GoldenView.org](http://www.GoldenView.org) • 





*Serving Businesses & Individuals For Over 35 Years*

**Three Convenient Locations**

501 Union Avenue, Laconia 603-528-2241  
64 Franklin Street, Franklin 603-934-2942  
9 West Street, Lincoln 603-745-3121

[www.mdccpas.com](http://www.mdccpas.com)

*Member AICPA, Private Companies Practice Section, NH Society of CPAs*

*the*  
**WINNIPESAUKEE**  
*playhouse*

**FOLLOW US ON**



Proud to partner  
with Winnepesaukee  
Playhouse to provide  
another season of  
spectacular performances.

Named  
Best-In-State  
Banks for NH  
by Forbes  
Magazine  
2022



**FSB**

Franklin Savings Bank  
FSBNH.BANK



## #HappyUp at The Studio!

Experience the Lakes Region's most joyful and  
eclectic shopping experience for yourself!



598 Main Street, Laconia, NH  
603-524-8008 • [thestudionh.com](http://thestudionh.com)



## **FIRESIDE INN & SUITES**

*Lake Winnepesaukee*

*Year Round Comfort - Grab & Go Breakfast*

*Indoor Pool & Hot Tub - Outdoor Pool seasonal*

**ENJOY the Show!!**

**603.293.7526 / [Firesideinnngilford.com](http://Firesideinnngilford.com)**



# PLAN FIRST.

Period.

It's about your plan. It's about you.

To have a conversation about your financial plan with an advice-only guy, give me a buzz.

If you're in the trades and own a business—even better.

No suits or ties will be worn to this meeting. And there will be Dad jokes.

36 Country Club Road, Suite 926 – p:603-524-4994 – joel@planfirstperiod.com – www.planfirstperiod.com

Advisory services through Cambridge Investment Research Advisors, Inc., a Registered Investment Advisor. Cambridge and PlanFirst, LLC are not affiliated.



Altrusa Int'l of  
Laconia, NH, USA

Become a member!

*Join with others who are  
creating better communities!*

[www.altrusalaconia.org](http://www.altrusalaconia.org)  
[altrusalaconia@gmail.com](mailto:altrusalaconia@gmail.com)  
Follow us on Facebook



**Gilford Home Center**  
A SMALLER BOX WITH A BIGGER VALUE

[gilfordhomecenter.com](http://gilfordhomecenter.com)

603-524-1692

Hours, Mon. - Fri. 7:00 - 5:00

Sat. 8:00 - 3:00

Sun. 9:00 - 1:00



Mon.-Fri. 7:30-5:00, Sat. 7:30-3:00  
and Sun. 7:30-1:00

[gilfordtruevalue.com](http://gilfordtruevalue.com)  
603-524-5366



**LOVERING  
AUTO GROUP**

Meredith



4.9 ★★★★★



MISIASZEK  
TURPIN



[MISIASZEKTURPIN.COM](http://MISIASZEKTURPIN.COM)

residential | non-residential | historic preservation



## Melcher & Prescott INSURANCE

KNOWLEDGE. TRUST. CONFIDENCE.



CO-OPERATIVE  
INSURANCE  
COMPANIES

Since 1862 Melcher & Prescott Insurance has been a proud sponsor of the arts and culture in our community.

Our local professional staff are here to assist you with all your insurance needs including homeowners, automobile, watercraft, business and employee benefits.

*We work closely with our clients to secure the proper coverage at the best price!*

[www.melcher-prescott.com](http://www.melcher-prescott.com) | [insure@melcher-prescott.com](mailto:insure@melcher-prescott.com) | 603-524-4535



**Best Insurance Company**



**This is what retirement looks like.**


An active community of friends is  
waiting for you at Taylor.

Taylor Community is located in the beautiful Lakes Region of New Hampshire with campus locations in both Laconia and Wolfeboro. Finding a home at Taylor means more than access to a stunning new cottage or apartment - it means receiving the keys to present and future peace of mind.

Whether you prefer an active lifestyle filled with fitness classes and an extensive lineup of social and recreational opportunities, or would rather enjoy a fine-dining experience with friends after a day spent by the lake...

Taylor is the place for you!



 (603) 366-1400 / [taylorcommunity.org](http://taylorcommunity.org)

A not-for-profit since 1907

**Discover Taylor Community**  
[taylorcommunity.org](http://taylorcommunity.org)

**Laconia**

435 Union Avenue  
Laconia, NH 03246

**Wolfeboro**

83 Rolling Wood Drive  
Wolfeboro, NH 03894



The Winnepesaukee Playhouse Presents  
the Playhouse Professional Company in

## CINDERELLA: A TRADITIONAL ENGLISH PANTO

By Neil Pankhurst

### The Production Team

Director.....	Neil Pankhurst
Music Director.....	Judy Hayward
Choreographer.....	Nicole Sullivan
Stage Manager.....	Francesca Endres
Costume Designer.....	DW
Lighting Designer.....	John Findlay
Sound Designer.....	Samuel Maynard
Scenic Coordinator.....	Neil Pankhurst
Some Original Scenic Elements Created by.....	Andrew Stuart
Costume Assistant/Wardrobe Supervisor.....	Nick Cochran
Props Supervisor.....	Lesley Pankhurst
Scenic Carpenter.....	Francisco Fialho
Scenic Charge Artist.....	Gwen Elise Higgins
Additional Sound Engineering.....	Christopher Renaud

Note: This production contains two short strobe-like effects  
at the end of Act 1.



# The Cast

(In order of appearance)

Lily/The Spirit of Ella's Mother.....Kat Gold  
Baron Basil Hardup.....Jim Rogato  
Ella.....Sophia Kim  
Buttons (The Bell Boy).....Seth Turner  
Prince Charming.....Teghan Marie Kelly  
Dandini.....Molly Chiffer  
Baroness Sybil Hardup.....Ashley Meeken  
Philis.....Robert Hooghkirk  
Lydia.....Nick Winkler

## Dance Ensemble

Madden Bolduc, Reese Dutile, Kerry Forkell,  
Harper Hallett, Natasha Kharitonov, Audrey Manita,  
Sophie Pankhurst, Nicole Sullivan, Ellie Twaddell

Thank you to:  
Kate Dugas

# A Note from the Director

*Cinderella* is probably the most iconic of all the fairy stories. The notion of a “Cinderella Story” even entering the lexicon of common usage when referencing a person or team who - against all odds - achieves great success.

Back in the UK, *Cinderella* is probably the best-loved of all the pantos, but curiously differs from some of the usual expectation of what you might have come to expect from this Christmas entertainment.

Firstly, and maybe unexpectedly, far fewer people are coupled at the end of the show, as our attention is concentrated solely on the wedding of Charming and Cinderella. Secondly, it is the sole panto to have two principal boys - meaning female actors playing male roles, in the parts of Prince Charming and his equerry and best buddy, Dandini. Thirdly, it is the only panto to have two panto dames who play the ugly sisters.

This year the UK (and the world) lost two of the funniest and greatest female impersonators who frequently took on panto dame roles: Paul O’Grady - aka Lily Savage - and Barry Humphries, who created the Australian housewife Dame Edna Everage. So as the pair of them leave us, I am delighted to introduce you to two new dames!

Enjoy the silly show, and don’t forget to shout out!

--Neil Pankhurst



# Cinderella

- Prologue - *The Village Green, Little Charming-on-the-Wold*  
Summer Medley.....Lily, Basil, Ensemble
- Sc. 1 - *The Village Green, Little Charming-on-the-Wold*  
Mr. Blue Sky.....Ella, Buttons, Ensemble  
Perfect.....Buttons, Ella
- Sc. 2 - *The Outskirts of the Village of Little Charming-on-the-Wold*  
All I Care About.....Charming, Dandini
- Sc. 3 - *Outside Stoneybroke Hall*  
It's Raining Men.....Philis, Lydia, Ensemble
- Sc. 4 - *The Wood on the Outskirts of Little Charming-on-the-Wold*  
Waltz of the Flowers from *The Nutcracker*....Dance Ensemble  
Barcarolle from *The Tales of Hoffman*.....Charming, Ella
- Sc. 5 - *Outside Stoneybroke Hall*  
This Ole House.....Basil, Buttons  
Diamonds Are a Girl's Best Friend/Material Girl.....  
.....Sybil, Philis, Lydia  
Prince Charming.....Philis, Lydia, Charming, Dandini
- Sc. 6 - *The Kitchen at Stoneybroke Hall*  
I Want to be Happy.....Buttons, Ella, Ensemble

--15 Minute Intermission--

- Sc. 1 - *The Royal Palace Ballroom*  
Gimme, Gimme, Gimme.....Buttons, Charming, Philis,  
.....Lydia, Ensemble  
Dance the Night.....Lily, Ella, Ensemble  
L.O.V.E.....Dandini, Charming, Ella, Ensemble
- Sc. 2 - *The Kitchen at Stoneybroke Hall*  
Uptown Girl.....Basil and Sybil  
Mona Lisa.....Charming, Ella  
Good as Hell.....Sybil, Philis, Lydia, Ensemble
- Sc. 3 - *Outside of the palace*
- Sc. 4 - *The Royal Palace Ballroom*  
Dance the Night.....Full Company

# From The Winnepesaukee Playhouse Education Department...

## The Top Five Things YOU Should Know About Being in the Audience at a Pantomime...

Pantomime performances like the Winnepesaukee Playhouse's *Cinderella* are often thought of as being "very British," despite having spread to a number of other regions such as Australia, South Africa, Canada, and the United States. While it IS true that pantomime is most popular around the holidays in England, AND that most notable panto performers are British, AND EVEN that some individuals refer to this type of theatre as "British Pantomime," one of the most enjoyable parts about a panto performance is how much it is a mish-mash of many different things. Pantomime's origins are varied and its modern influences are changing all the time, so one production is never exactly like another. That said, here are (with a David Letterman style drum roll) the top five things YOU should know about being in the audience at a pantomime:

1. **You Will Recognize the Story!** Pantomime draws from well-known fables and fairy tales including *The Little Mermaid*, *Sleeping Beauty*, *Aladdin*, and *Cinderella*. Its stories are about good versus evil and love triumphant winning out over all odds—topics that are obviously still very popular in all types of storytelling today.
2. **You Will Recognize the Characters!** One of panto's most direct ancestors is the fast-paced slapstick Italian *Commedia dell'arte*, which was most known for its easily recognizable stock characters: young and innocent lovers, scheming servants, doddering professors. *Commedia* has had a recognizable influence on pantomime as well as contemporary movies, TV shows, cartoons, etc. Think about stock characters you might know from sitcoms: the dumb but loveable husband with the all knowing wife who holds the family together for him and their wisecracking kids.
3. **You Will Recognize the Music!** Another of panto's influences is England's Victorian Music Halls (similar to American Vaudeville) that featured a "variety show" of musical numbers, comedy acts, and novelty performers. This tradition is echoed in contemporary TV shows like Britain/America's Got Talent. Just as was done in Music Halls, Vaudeville, and as is done now for the entertainment of celebrity judges on network television, modern pantos always incorporate older familiar musical numbers (and parodies of them) as well as pop songs (and parodies of them).



4. **You May Recognize the Chorus!** Pantomime often features a chorus of young dancers and singers, sometimes called “the babes.” In Victorian times, these performers often came from very poor backgrounds and were frequently the family’s only breadwinners. The young chorus members in the Playhouse’s panto are local dancers!

5. **You Will NOT Recognize That... Man? Woman!?** One of the best known pantomime traditions is the blurring of gender. The casting of a woman in the role of “the principal boy” is an idea with a direct connection to Victorian times and a custom called “breeches roles.” It usually involved a woman playing a boy wearing pants (breeches). In a society where furniture legs were sometimes thought too risqué and had to be covered with skirts and where women’s fashion included layers and layers of fabric, a woman playing a man caused a much bigger reaction than a man playing a woman when the audience could (gasp!) see the shape of her legs! The “pantomime dame,” on the other hand is a tradition that connects back to Medieval and Shakespearean theatre where women’s roles were played by men. This was originally done for decency sake, but the Music Halls adopted this tradition, as panto has, partly to poke fun at women’s fashion. We still see it today, too. Think about Edna Turnblad in *Hairspray* or Agatha Trunchbull in *Matilda the Musical*. Widow Twankey, for example, has become a popular panto stock character. In a recent interview, Ian McKellan (Gandalf, Magneto) said that the Widow has been one of his favorite roles to play.

Source:

“The Magic of Pantomime.” ITS BEHIND YOU DOT COM. Web. 14 Dec. 2014. <<http://www.its-behind-you.com>>. Website.



# YOUR AD HERE!

Would you like to be a sponsor or program advertiser for our 2024 season? Contact [info@winniplayhouse.org](mailto:info@winniplayhouse.org) for more information!

## *The Common Man Family – Setting the Stage for Uncommon Dining*



Bay Point at Mill Falls • (603) 279-2253

theCMan  
.com

Church Landing at Mill Falls • (603) 279-5221



Chase House at Mill Falls • (603) 279-3003

OPEN MAY - SEPTEMBER! • (603) 279-3445

# GERMAN MOTORSPORTS

AUDI • VOLKSWAGEN • BMW • MERCEDES • MINI

Authorized BOSCH Service Center



(603) 524-5016



[www.germanmotorsportsusa.com](http://www.germanmotorsportsusa.com)



The Winnepesaukee Playhouse Education Department promotes the developmentally appropriate acquisition of theatrical skills, fosters a life-long appreciation of the technique, history, and literature of theatre and its ancillary fields of study, and—above all—seeks to inspire its students to use theatre as a tool to develop empathy, with which they may explore and come to better understand the world.



### **Educational Programming at the Winnepesaukee Playhouse includes:**

- Four fully realized productions annually for students ages 8-18
- Summer camps for students ages 5-12
- Focused summer training for students ages 13-18
- Classes and workshops for participants of all ages
- Post-performance talkbacks
- The Symposium Series
- Backstage tours
- Informative articles in playbills
- Teacher training
- College internships
- Theatre and arts education advocacy



*For more information...*

[winnepesaukeeplayhouse.org/education](http://winnepesaukeeplayhouse.org/education)  
[education@winniplayhouse.org](mailto:education@winniplayhouse.org)

# the WINNIPESAUKEE playhouse

Dear Friends,

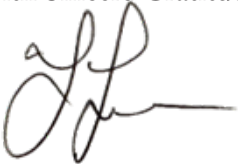
**I have been able to depend on theatre my whole life.** As a sensitive kid who could be shy, it gave me a way to relate to others, a way to feel accepted in a group. As an adult, it helps me wrestle with hard questions about the world and about myself—and helps me understand how people whose lives have been different than mine might navigate those same questions. While doing all of this, theatre also manages to provide soothing escapism and silly fun when I need it—which is often these days.

If you're reading this, I suspect that some or all of this rings true to you. I bet that you have also been able to depend on theatre at some point in your life. Today the Winnepesaukee Playhouse needs your financial support and **I am hoping that we can depend on you.**

As the COVID pandemic has receded and life has felt more “normal,” many things have started getting back on track. **Attendance at productions and corresponding ticket revenues ARE on their way back to pre-pandemic levels, but aren't there yet. Many of our financial challenges, meanwhile, have significantly intensified.** Supplies and services essential to our work (such as lumber, utilities, insurance, and more) have ballooned in cost at a dizzying rate. While we are grateful to work on a beautiful campus our maintenance costs, for example, have literally doubled in the last few years. ***We need your help to prevent this from becoming an unsustainable situation.***

As all nonprofit organizations do, we rely on the generosity of you—our community—to bridge this gap. **I am asking you to consider making a vitaly needed financial contribution to help ensure the Winnepesaukee Playhouse is able continue the work on which we all depend.**

With Sincere Gratitude,



Timothy L'Ecuier  
Artistic Director

The Winnepesaukee Playhouse



To contribute, use the attached envelope or simply scan the QR code with your SmartPhone.

THANK YOU!



**THANK  
YOU FOR  
YOUR  
SUPPORT!**

## The Cast



**Molly Chiffer** (Dandini) (she/her) is over the moon and through the roof to be back at the Winnepesaukee Playhouse for some raucous fun in this fairytale. A Connecticut native turned Californian (Fight On, USC Trojans!), Molly is now a New York based performer and director. Favorite credits include: Laura in the Playhouse's production of *The Glass Menagerie* earlier this season, *Bad Sister* (New York Theatre Festival), Petra (*A Little Night Music*), and the Playhouse's *Sleeping Beauty: A Traditional English Panto* (Prince Philip). Most Recent Directing Credit: *The Prom* at the Greater Hartford Academy of the Arts.  
www.mollychiffer.com IG: @jeezmollylouis.



**Kat Gold** (Lily/The Spirit of Ella's Mother) is excited to return to the Playhouse after her performance as Matron Mama Morton in *Chicago* (NHTA Award Nominee). Select previous credits: *Cinderella* (Theatre By The Sea, BroadwayWorld RI Best Supporting Actress Nominee), *La Cage aux Folles* (Arizona Broadway Theatre), *Disenchanted!* (MNM Theatre Company), *Kinky Boots* (Slow Burn Theatre Company), *Nine* (Broward Stage Door Theatre, Silver Palm Award Winner and Carbonell Award Best Supporting Actress Nominee). Her performance is dedicated to Sydney and Erick.



**Robert Hooghkirk** (Philis) is delighted to be back at the Playhouse this season! Previous credits at the Playhouse: *Agatha Christie's Murder On The Orient Express*, *Sweeney Todd*, *Corduroy*, *Sleeping Beauty: A Traditional English Panto*, *Oliver!*, and *Robin Hood*. Favorite credits include: the national tour of *SPAMILTON: An American Musical Parody* (King George III), *The Golden Girls Musical Parody: Pride Edition* (Dorothy Zbornak), and *The Ninth Guest* (Peter Daly). He has performed with Disney Cruise Lines, The Link Theatre, FC Bergman, Lexington Children's Theatre, and Chamber Theatre of Boston. TV Pilot: A Class Act (Randy) with

Morbid Little Girl Productions. Thanks to all the artists/creative minds on and off stage!



**Teghan Marie Kelly** (Prince Charming) is at the Playhouse this holiday season with BELLS ON! The Boston-based actor feels so blessed to spend the holidays with family and friends here in the Lakes Region. Most recently, you saw her as Mary Debenham in *Murder on the Orient Express* and Sophie in *Mamma Mia!* This theatre holds a special place in her heart; she could not be more elated to be on this stage once more! She would not be standing here today without the unconditional love and support of her family and dear friends, so THANK YOU to them. Now, enjoy this beautiful English tradition brought to life in Meredith!

## The Cast



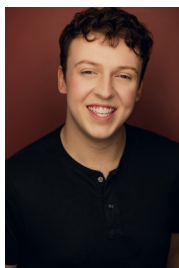
**Sophia Kim** (Ella) (she/her) is thrilled to be a part of this production and make her professional debut with this company! So much love to those who have been a part of her journey these past two years. Love to Carrie, Desi, and her family.



**Ashley Meeken** (Baroness Sybil Hardup) is thrilled to return to the Winnepesaukee Playhouse this season! In 2019 she played Velma in *Chicago* earning a New Hampshire Theatre Award for Best Actress, in 2020 she played Soccer Mom in the Education Department's production of *The Wolves*, in 2021 she starred in the one-woman musical *Tell Me on a Sunday*, in 2022 she played Nancy in *Lionel Bart's Oliver*, and in 2023 played Donna in *Mamma Mia!* Ashley's training includes studying theatre and dance at the Walnut Hill School for the Arts in Natick, MA. Ashley earned her B.F.A. in Musical Theatre from the Cincinnati College-Conservatory of Music. Some of Ashley's professional credits include performing in the musical *Chicago* at the Edinburgh Fringe Festival in Scotland, singing with the Cincinnati Pops Orchestra on PBS, and performing at NYC's Lincoln Center. Ashley traveled the world as the company manager and principal singer for Jean Ann Ryan Productions on Norwegian Cruise Line and P&O Ventura Cruise Lines. Since returning back to NH, Ashley has performed with the Lakes Region Symphony Orchestra and played numerous roles locally. Her favorite roles include Dorothy Brock in *42nd Street*, Irene Molloy in *Hello Dolly*, Fantine in *Les Misérables*, Cassie in *A Chorus Line*, and the iconic role of Eva Peron in *Evita*. Ashley is the proud owner/director of The Studio at Meredith Bay, a center for dance and performing arts in Meredith, NH.



**Jim Rogato** (Baron Basil Hardup) has been performing with the Winnepesaukee Playhouse for almost 20 years and is proud to be a part of this production. Whether it is a community or professional production, it is always a positive experience and a great show. Favorite roles have been John Proctor in *The Crucible*, Brundibar in *Brundibar*, Capt. Hook in *Peter Pan*, Sir Bedevere in *Spamalot*, Pseudolus in *A Funny Thing Happened on the Way to the Forum*, Adolpho in *The Drowsy Chaperone* along with many dramatic roles in *Our Town*, *12 Angry Men*, *Of Mice and Men*, *The Guys*, *The Diary of Anne Frank*, and many more. Jim can also be seen performing with his DooWop group The Rocklin Daddios all over New England. Thank you for coming and enjoy the show.



**Seth Turner** (Buttons) is an actor/singer based out of New York City and recently graduated from the American Musical and Dramatic Academy. Most recently he was in a regional production of *Spring Awakening* at the Roxy regional theatre in Clarksville TN. Enjoy the show! Insta: seth.turnerrr

## The Cast



**Nick Winkler** (Lydia) is thrilled to return to the Playhouse after spending the summer as the Properties Supervisor. They are currently based out of Atlanta. Favorite past roles include Man #2 (*Songs for a New World*), Lefou (*Beauty and the Beast*), and Arpad (*She Loves Me*). Nick graduated from Saint Mary's University of Minnesota with a B.A. in Musical Theatre. Nick would like to thank the wonderful staff at the Playhouse, their parents, family, friends and their partner for all of the love and support someone could ask for.

## Dance Ensemble



**Madden Bolduc** is a seventh grader at Moultonborough Academy, and he lives in Meredith, NH with his family. Madden loves all things theater and dance and has seven years of dance training. He is ecstatic to be making his professional debut in *Cinderella*. Most recently he was Mendel in *Fiddler On The Roof* with The Winnepesaukee Playhouse Education Department. Favorite past roles

include: Jack Kelly (*Newsies Jr.*), Sven (*Frozen Jr.*), Baloo (*Jungle Book Kids*), Manager/Mr. Greenway (*Elf Jr.*), Fritz/Rat King (*The Nutcracker*), Eric (*Matilda Jr.*) and many more. He just wrapped up his master class with Interlakes Theatre after spending a busy summer in the box office with them. He hopes to one day pursue a career in musical theatre. Shoutout to Luci and her mom.



**Reese Dutile** is a sixth grader at Inter-Lakes Elementary School and a dancer at The Studio at Meredith Bay. She started dancing at 4 years old and has loved it ever since. Reese has been a member of the Studio's competition team for the last three years and has won many group and individual awards including "Broadway Bound." Reese has previously performed in *Annie* and *Home for the Holidays*. In her free time, she likes hanging out with her twin sister and her dogs. She also loves skiing and playing basketball with friends. She's excited to be part of *Cinderella* and thanks her friends and family for all their love and support.



**Kerry Forkell** is excited to be part of her very first production at the Winnepesaukee Playhouse! Her passion is dance and she has been dancing at The Studio at Meredith Bay for 5 of her 9 years. Kerry is a hardworking 4th grader at Inter-Lakes Elementary School. She loves skiing, swimming, and drawing. She'd like to send a heartfelt thank you to her friends, family, and dance family for their love and support.



## Dance Ensemble



**Harper Hallett** is a 9 year old who dances at The Studio at Meredith Bay and currently takes classes in ballet, modern, contemporary, tap, jazz, musical theatre and competes with their performance group. Harper is in fourth grade at Inter-Lakes Elementary School. Outside of school and dance she enjoys practicing aerial poses on her silks and spending time with her friends and family. Harper is very excited to be a dancer in *Cinderella*.



**Natasha Kharitonov** has been avidly dancing and acting since she was young. She has danced with Alton Dance Academy for 11 years. Her previous shows with the Winnepesaukee Playhouse were *Oliver!* and *Sleeping Beauty: A Traditional English Panto*. Some of her favorite past roles have been Dorothy in *The Magical Land of Oz*, and Jojo in *Seussical the Musical*. She is beyond thrilled to be dancing on stage again for this year's panto!



**Audrey Manita** began her dancing journey at two years old. She quickly realized it was more than just a dance class. For her it was her passion. She has spent the last eleven years practicing many styles of dance, street jazz being her favorite. When she is not in the studio, she enjoys spending her time being creative with arts and crafts, and baking. She loves animals and aspires to become a veterinarian.



**Sophie Pankhurst** is a second year music industry major at Northeastern University. She is the only performer to appear in every panto at the Winnepesaukee Playhouse! She thanks her dad for sneaking her into rehearsals around classes and finals. Favorite past roles include Margo in *Legally Blonde* and Bird Girl in *Seussical the Musical* (NUStage Musical Theatre Co.), Audrey in *Little Shop of Horrors* and Molly Aster in *Peter and the Starcatcher* (New Hampton School), and Little Becky Two Shoes in *Urinetown*, Roger in *Lord of the Flies*, and Dinah Lord in *High Society* (Winnepesaukee Playhouse).



**Nicole Sullivan** (Choreographer) is a nineteen year old dancer, dance teacher, and choreographer. She has been dancing for a total of fifteen years and acting for eight years. She recently graduated from Inter-Lakes High School in June of 2022. Nicole has been in *Aladdin* (2014), *Snow White* (2017), *The Little Mermaid* (2018), *Beauty and the Beast* (2019), and *Sleeping Beauty* (2022). Nicole dances and teaches for The Studio at Meredith Bay in Meredith, NH. *Sleeping Beauty* was the first show she has choreographed and she is very excited to choreograph *Cinderella* as well! She has

won various awards including Miss Showbiz 2018 as well as a choreography award from Starquest dance competition this past year. Nicole is thrilled to choreograph this silly pantomime, as-well as dance in the show! Nicole hopes everyone enjoys the production of *Cinderella*!

## Dance Ensemble



**Ellie Twaddell** A dancer of five years, Ellie dances for The Studio at Meredith Bay, where she takes classes in modern, contemporary, lyrical, ballet, tap, jazz, street jazz, and musical theatre. She is also in her third year as a member of The Studio's Performance Group. Ellie is 11 years old and is currently in middle school at Acton Academy in Laconia. In her free time she enjoys spending time with friends and family, Scouting, and playing lacrosse for multiple select and elite teams. Ellie is very excited to be dancing in *Cinderella*, her first Winnepesaukee Playhouse production!

## The Production Team

**Nick Cochran** (Costume Assistant/Wardrobe Supervisor) is a Chicago-based Costume Designer, Actor, and Artist. After studying Theatrical Design, and Acting at Plymouth State University, Nick began to work at several regional theaters most frequently here at the Winnepesaukee Playhouse. His most recent show was last summer designing *The Conference of the Birds*. Apart from the Playhouse Nick most recently designed *Clue The Musical*, *The Spitfire Grille*, and *Leader of the Pack* at Post Playhouse in Nebraska. He worked on the wardrobe crew for The Goodman Theatre's production of *The Cherry Orchard* back in Chicago. Nick is so happy to be back once more at the Playhouse!

**Francesca Endres** (Stage Manager) (she/her) is an NYC based performer and stage manager. Past stage management credits include: *Find Your Way* (Woman in Motion), *On This Wondrous Sea* (APAP Showcase), *Daughter of Society* (NY Theatre Festival), and *Free to Be* (Elizabeth Troxler). She would like to thank her friends and family for all of their support and for getting her this amazing opportunity. She is thrilled to have been given the chance to work on this piece.

**Francisco Fialho** (Scenic Carpenter) is a newly graduated theatre technician/carpenter. Francisco has built a number of sets, previously working on shows at Keene State College as both a shop hand and run crew.

**John Findlay** (Lighting Designer) Graduate of Plymouth State University, NH. B.A. Theatre Arts, Focus in Lighting Design and Acting. *Twelfth Night*, *Narnia*, *Beauty and the Beast*, *Deadly Murder* (Winnepesaukee Playhouse), *Sweet Charity*, *Stage Kiss*, *Contemporary Dance Ensemble* (Plymouth State University), *The Voice Of Broadway* (Theatre [Untitled]), Numerous Cabarets for Forestburgh Playhouse. Production Electrician Off Broadway: *The Other Josh Cohen*, Touring: *South Pacific*, *An American in Paris*, Regional: *Murder For Two* (The Cape Playhouse). Many thanks to Mom!

**Judy Hayward** (Music Director) holds a BFA in Piano Performance from LA Tech Univ. and a Master's degree from the Univ. of Oregon in Arts Administration. She has music directed for numerous theaters, both professional and community, from coast to coast. In the Northeast, Judy has music directed for Winnepesaukee Playhouse, Seacoast Rep, StageCoach Productions, Actorsingers, Stoneham Theater (MA), among others. Judy received the NH Theatre Award for music direction for Winnepesaukee Playhouse's productions of *The Fantasticks!* and *Chicago*. In addition, she was music director for their productions of *Shout!*, *Dani Girl*, *Tell Me On a Sunday*, *Jesus Christ Superstar*, [title of show], *25th Annual Putnum County Spelling Bee*, *Joseph...Dreamcoat*, *Godspell*, *Peter and the Starcatcher*, *Cabaret*, *High Society*, *Aida*, *Carrie*, *Urinetown*, and the holiday Pantos.

## The Production Team

**Gwen Elise Higgins** (Scenic Artist) is a traveling artist from Midcoast Maine. B.A. in Theatre from University of New Hampshire. Previous painting/scenic design credits include Penobscot Theatre Company, Winnepesaukee Playhouse, Seacoast Repertory Theatre, Prescott Park Arts Festival, and more. [www.gehiggins.com](http://www.gehiggins.com)

**Samuel Maynard** (Sound Designer) is ecstatic to be making his Winnepesaukee Playhouse debut! He is originally from Illinois, but moved to New York City to continue his education in Production and Design for Stage and Screen at Pace University. Recent credits include: *Living and Breathing*, *Romeo and Juliet*, and *Two Sisters and a Piano* at Two River Theater. Samuel would like to thank his partner, Colin, and his family for their unconditional love and support. Website: [samuelmaynard.com](http://samuelmaynard.com)

**Neil Pankhurst** (Playwright/Director) is a founding member and former Artistic Director of the Winnepesaukee Playhouse. He was born, raised and educated in the UK, coming to NH in 2003. He has a BA and Post Graduate Certificate of Education in Drama from the University of Wales and an MA in Arts Education (Drama) from The Royal Central School of Speech and Drama in London. From 1988 - 2002 he taught and directed or produced over 100 productions around the London area. For the Winni Players Neil's direction has included: *The Crucible*, *The Servant of Two Masters*, *12 Angry Men*, *Caucasian Chalk Circle*, *The House of Bernarda Alba*, *Big River*, *All My Sons*, and *The Government Inspector*. For the Education Department he has directed *Grimm Fairy Tales*, *Voyage Around the World*, and *The Comedy of Errors*. For the professional company his direction has included *Proof*, *The Woman in Black*, *Stones in His Pockets*, *The Glass Menagerie*, *Around the World in 80 Days*, *Sleuth*, *Blithe Spirit*, *The Tempest*, *Gigi*, *The Mousetrap*, *Sherlock Holmes*, *The 39 Steps*, *The Importance of Being Earnest*, *Aladdin*, *The Business of Murder*, *Jesus Christ Superstar*, *Table Manners*, *Sleeping Beauty*, *Tilting Ground*, *Peter and the Starcatcher*, *Living Together*, *The Waltz*, *Jack and the Beanstalk*, *The Hound of the Baskervilles*, *Round and Round the Garden*, *Snow White*, *Charley's Aunt*, *Ghost the Musical*, *The Little Mermaid*, *Insignificance*, *Guess Who's Coming to Dinner*, *Beauty and the Beast*, and *Betrayal*. He has been fortunate enough to win ten NH Theatre Awards including four for Best Professional Direction – *The Woman in Black* (2007), *The Glass Menagerie* (2009), *Around the World in 80 Days* (2010), and *The Waltz* (2016). He has directed for Plymouth State University and M&D Productions in N. Conway, designed lights for Advice to the Players and has served as an adjudicator for the NHETG. He is now retired and lives in both Meredith, NH and Somerset, England.

**DW** (Costume Designer) Theatrical work has appeared regionally across the country. NYC design credits include NYMF, NYC FRINGE, Theatre Row, The Mint, Cherry Lane, APAC, Prospect Theatre Company, Gallery Players, The Gym @ Judson Church, etc... Broadway Associate & Assistant Credits include: *RACE*, *Everyday Rapture*, *Cinderella*, *The Threepenny Opera*, *The Apple Tree*, *The Wedding Singer*. Feature Film Designs include: *Little Sister* and *Peter & Vandy*. Styles for Broadway.com. Guest stylist for The Skivvies. Resident Designer at the New York Film Academy and The Actors Studio Drama School.

## Permanent Staff

**Thom Beaulieu** (Managing Director) is pleased to be a part of the staff at the Playhouse. An award-winning lighting and sound designer, Thom holds a BFA in Drama from Carnegie Mellon University's School of Drama, as well as an MS in Physics from Georgia State University. He enjoys golf, boating, and poker, and lives in New Hampton with his wife Meredith and daughter Molly.

**RJ Bogues** (Assistant Technical Director) is excited to be here for his first season as an ATD, as well as his third season at the Playhouse. He is a WCSU alumni originally from small town New Fairfield, CT. He has worked previously as a carpenter in UBU at WCSU, *Spamalot* at Musicals at Richter, and *Godspell* at ACT of CT, with some small technical director credits in *Shrek the Musical* at Musicals at Richter, and *The Nightman Cometh* at CCSU. Randal has also acted on occasion, appearing in shows such as *Glorious!* (Bellhop 1) in the Playhouse's 2021 season. He thanks you for coming, and hopes that you will enjoy what the Winnepesaukee Playhouse's 20th Season has to offer!

**Amanda Dickinson** (Production Manager) came to the Playhouse from a background in healthcare, having practiced medical Speech-Language Pathology for 18 years. She holds a Bachelor of Science in Speech and Hearing from Elmira College in New York, and a Master of Science in Speech-Language Pathology from The MGH Institute of Health Professions in Boston. After joining the Playhouse in 2017 as a community theatre actor, Amanda went on to work with the Professional Company and the WP Education Department, while also serving for five years on the Winni Players Community Theatre steering committee. Favorite Playhouse credits include *M\*A\*S\*H* (Bridget), *Company* (Assistant Stage Manager), *Steel Magnolias* (Producer, Properties Coordinator), *The Complete Works of William Shakespeare (Abridged) [Revised]* (Wardrobe Supervisor/Running Crew), *The Wolves* (Stage Manager), *Oedipus Rex* (Stage Manager), and *[title of show]* (Stage Manager). Amanda joined the permanent Playhouse staff as Production Manager in 2023.

**Donna Findlay** (Bookkeeper) joined the Playhouse in 2015 after retiring from a 21 year career at a public utility in Manchester, NH and spending 5 years as a para-educator in the Inter-Lakes School District here in Meredith. She gives unending love and gratitude to Jim, Cortland, John, and grandson Jimmy.

**Matthew Hutchens** (Technical Director) started at the Winnepesaukee Playhouse originally as a carpenter for 2021 season. He has stuck with us since then as the assistant technical director for 2022 and is now the technical director for 2023. Matthew's goals, as the technical director, are to teach others while also creating beautiful sets for the stage. This will be his first full season as a TD.





## Permanent Staff

**Cory Lawson** (Director of Education and Community Engagement) is a professional actor, director, and theatre educator. He is currently working on his dissertation for his Ph.D. in Interdisciplinary Fine Arts at Texas Tech University, where his research is in theatre festivals and devised works. He has devised and performed in several shows with the Dutch theatre company Orkater, both in Amsterdam and New York City. Cory has also created work with The Living Theatre and helped to found Ready Set Go Theatre, which created the world's first Shakespeare Webisodes. As an actor and director, Cory's work has been seen professionally in New York as well as in regional theatres across the country. He has also appeared on screen in national commercials and various television episodes. Cory holds his MFA in acting from The New School for Drama and a BA in Theatre: Performance and Dramaturgy from Roanoke College. He has served as the Associate Director of Education and Outreach at the Alabama Shakespeare Festival, the Artistic Director of The Burktech Players (a neurodiverse theatre company in Lubbock, Texas), and the Director of The Wallace Weekend Players in Levelland, Texas. Most recently, Cory co-founded and served as the Artistic Director of The Outside In Festival, a new nonprofit Theatre Festival showcasing devised works through the fostering and presentation of both national and international artists. He's thrilled to join the leadership team at the Winnepesaukee Playhouse and is looking forward to meeting and working with everyone in the community.

**Timothy L'Ecuyer** (he/him/his) (Artistic Director) is thrilled and grateful to begin a new chapter at the Winnepesaukee Playhouse, having previously served as Director of Education from 2014 to 2022. His directing credits at the Playhouse include *The 39 Steps*, *Red, Grace and Glorie*, *A Midsummer Night's Dream*, *The Rocky Horror Show*, *Mary's Wedding*, *California Suite*, *The Complete Works of William Shakespeare (Abridged) [Revised]*, *SHOUT! The Mod Musical*, *Sweeney Todd*, and fourteen productions with the Education Department. Mr. L'Ecuyer has BAs in theatre and English from Keene State College as well as an MA and MFA in theatre education and applied theatre from Emerson College. He is a former president of the New Hampshire Educational Theatre Guild, an Equity stage manager, and a Teaching Lecturer in the Music, Theatre and Dance Department at Plymouth State University, where he directed *Our Town*, *An Enemy of the People*, *The Curious Incident of the Dog in the Night-Time*, and *Urinetown*. He has worked with many New Hampshire and Boston area theatres including American Stage Festival, Barnstormers, theatre KAPOW, Peacock Players, StageCoach Productions, Greater Boston Stage Company, the Nora Theatre Company, and Underground Railway Theater. He would like to thank his parents, Peter and Linda L'Ecuyer for (among many other things) supporting the Playhouse in NH Gives this year. He'd also like to thank the following people for their support: Gail Barrett, Laurie Felgate, Daniel Patterson, Mike Richardson, Sharon and Terry Richardson, Renée Speltz, Thomas Staley, and Laura Stephan. [timothylecuyer.com](http://timothylecuyer.com)

**Lesley Pankhurst** (Patron and Company Services Director/Props Supervisor) is one of the founders of the Winnepesaukee Playhouse. Lesley is a graduate of Wellesley College with an MA in Arts Administration and Cultural Policy from Goldsmiths College, University of London. In addition to serving as the Marketing Director of the Playhouse for its first 13 years, she has also designed costumes for many of its productions and has twice been the recipient of the NH Theatre Award for Best Professional Costume Design for *Two Rooms* (2007) and *The Glass Menagerie* (2008). She is the proud mom to her daughter, Sophie, cat Sasha, and wife to the proudly retired, Neil. Much love and appreciation to Lyn Osborne Winter.

# 98.3 Frank<sup>fm</sup>™

**THE SOUNDTRACK OF THE LAKES REGION!**

The community we **service**  
is the community we **support**.

We thank our local communities for trusting us to be there when they need us, and are proud to do our part in supporting them.



Reliable Deliveries | Responsive Service


[www.deadriver.com](http://www.deadriver.com)



NEW  
HAMPTON  
SCHOOL

*Where Aspiring Artists*  
**TAKE CENTER STAGE**

Whether the arts are a passion or a hobby, there are ample opportunities for professional-level learning at New Hampton School. From the stage to the recording studio, at the ceramics wheel or in the animation lab, our students create in every corner of campus.

 [www.newhampton.org](http://www.newhampton.org)





## **A FULL SERVICE LAW FIRM**

Estate Planning and Probate  
Business & Non-Profit  
Real Estate  
Employment & Labor  
Municipal

Land Use & Development  
Telecommunications  
Litigation  
Environmental  
Utility

COUNSELING INDIVIDUALS, BUSINESSES,  
ORGANIZATIONS AND MUNICIPALITIES  
THROUGHOUT NEW HAMPSHIRE

DONAHUE, TUCKER & CIANDELLA, PLLC

**PROUDLY SUPPORTING THE ARTS  
FOR OVER 30 YEARS**

OFFICES IN MEREDITH, CONCORD, PORTSMOUTH, & EXETER, NH

**WWW.DTCLAWYERS.COM  
1-800-566-0506**

# Thanks

*Thank you for recognizing that art matters.  
It takes everyone working together to continue to create great theatre.*

## *Directors' Circle*

---

### **\$25,000+**

Anonymous  
Anonymous  
Anonymous  
Paul and Sharon Steinwachs

### **\$10,000+**

The Baker Family  
Beth and Rich Compson  
Jodie Herbert and Rusty McLear  
New Hampshire Charitable Foundation  
New Hampshire State Council  
on the Arts  
The Shubert Foundation

### **\$5,000+**

Richard and Carol Gerken  
Ellie Gordon  
Laura and Gary Stephan

### **\$2,500+**

Gloria and Irving Fox  
Greater Lakes Region  
Children's Auction  
Anita E. Springer  
John & Muff Walker

### **\$1,000+**

Anonymous  
Ray and Karen Abramson  
Cyrus Bowditch  
Mike and Lisa Brien  
Jim and Leslie Chapman and  
Meredith Whole Living Center  
Judy Cookman  
Ray Craigie and Pam Smarling  
James and Bonnie Doherty  
Chuck and Diane Fray  
Liz and Bob Gabel  
James Whittredge Hill  
John and Margie Kreidler  
Jason and Izzy McKinney  
Susan and Douglas McLane  
Sharon and Tom Messmore  
Debra Nash  
Kate O'Brien  
Neil and Lesley Pankhurst  
Barbara Pitsch  
John Robbins  
Jim and Judi Rogato  
Jason and Deanne Sargent  
Carolyn S Scattergood  
Ambassador Paul Speltz and  
Renee Speltz  
Graham and Julia Thomson  
Barbara Webb  
Whitney Werner  
Barbara Zeckhausen



# *to YOU!*

## *Actors' Circle*

---

### **\$500+**

Kelly Dunn  
The Findlay Family  
John and Carol Ford  
Michael Ames/Half Moon Enterprises, Inc  
Susanna High  
David and Patricia Immen  
Paul and Beverly Jaques  
The Denny Knight Family  
Fund of the Princeton Area Community Foundation  
Barbara & Chris Maciejewski  
Joan and David Martin  
Louise and Sandy McGinnes  
Maurice and Rhoda Miller Endowment Fund  
Mark and Susan Primeau  
Robert and Margie Sallies  
Gil Schohan  
Robert and Anne Shaw  
Judy and Steve Siegel  
Bruce and Betsy Thomas  
Deborah & Paul Walker  
Barbara and Gordon Webb  
Annie and Chris Weinmann  
Mr. & Mrs. Brian Winslow

### **\$250+**

Tom and Patricia Barrick  
George Berman  
Linda and John Browne  
Sarah Bunkley and Richard Smith  
James Burke  
Bob & Elaine Carangelo  
Ken Chapman and Carol Lowden  
Graham Edmondson  
Kendra and Paul Ferreira  
Jamie Gegerson  
Robert and Eileen Gosselin  
Katie Guilmett

Don and Lou Ann Harris  
Elizabeth Immen  
Joseph Kelaghan  
Kelly Kinhan  
Constance Kuekan  
Charlotte Lee and Ron Turbayne  
Brad and Lynn Leighton  
Deborah Leonard Kosits  
Alan and Carol Metevia  
In Memory of Jason and Harriett Morse  
Kaitlin O'Neil  
Rosemary Pizzuti  
Gail Putnam  
Deborah Seid and Tom Green  
Kristin Snow  
Edward Sonn and Sharon Forde  
David Stamps and Judith Buswell  
The Truesdale Family  
Mark and Kathleen Whitehead  
Gregg Williams

### **\$100+**

Anonymous  
Anonymous  
Anonymous  
Anonymous  
Anonymous  
Anonymous  
Anonymous  
Miriam Adams  
Christine and Carlos Anderson  
Cecile Andrews  
Delaney Andrews  
Rick and Rae Andrews  
William Bald  
Gail Barrett  
Chuck and Sue Bates  
Martin Berman  
Craig Betchart

Peter Bixby  
Tony and Terri Bouchard  
Steve and Judy Brown  
Jay Buckley  
Alison and Christopher Casco  
Mark Chiffer  
Matthew Croak  
Abraham and Lynn T. Dadian  
Cara David  
Constance Dehnel  
Alexa Dembiec  
Robert and Patricia DeNoble  
Diane G. Dion  
Martha Dolben  
Ann Donahue  
Tami and Mark Donohoe  
Carol and Robert Doretto  
Denise Doyle  
Kim Duncan  
Georgene Fabian  
Laura Felgate  
Andrew Fleischmann  
Debbie Frawley Drake  
Lisa Furlong  
Michael and Ellen Giguere  
Lynn Goddard  
Jean Halfmann  
J William Harris  
Julie Hart  
Deb Hastings and Fred Wernig  
Steve Jenkins  
Mark Johnson  
Susan Karsten  
Pat Kelly  
Ira and Lynn Keltz  
Bernice and Bernie Kramer  
Nancy Kubecka  
Maureen Kuharic  
Peter and Linda L'Ecuyer  
Nancy and Newbold LeRoy  
Marc and Carroll Levey  
Lisa Lovett

# *Actors' Circle* (continued)

John and Carol Low	Donna Acox	Marta Rainer
William and Stefanie Marsh	Marcy Alkalay	Tracy and Mark Renaud
Dr. Warren & Annette Mason	Amazon Smile Foundation	Linda Rickenbach
Robert and Donna McCoy	Kay Anderson	Rebecca Rigden
Greg & Regis Miller	Sol and Catherine Asmar	Sebastian Ryder
Peg and John Mongiello	William Batchelder	Elizabeth Sallies
Melissa Gabel Morse	Richard And Rosalie Beaulieu	Steven B. Schwartz and Paula A. Leonard-Schwartz
Paul Mroczka	Andy Bedford	Robert Sears
Sean and Helen Murphy	Karen and Paul Bemis	Sally Sibulkin
Dr. Noe	Barbara and Charles Birdsey	Cheryl Stocks
Margaret and Stephen Ober	Matt, Carey, and Emma Cahoon	Sara Tirrell
Deborah Osborne	Suzanne Caroselli	Rafael Vazquez
David and Fredda Osman	The Cottages of Wolfeboro	Marjory Wilkinson
Charlotte Otto	Judith Clayman	Richard Williams
A Parnes	Robert Connors	John and Karen Yeigh
Daniel Patterson	Cynthia and Harvey Creem	<i>All Other Gifts</i>
Rosemary and Clive Perry	Emily Dahl	Elizabeth Ahl
Mark Pettie and Sue Molitor	Hannah Davidson	Dalia Aleman
Clayton Phillips	David and Sylvia Detscher	Sharon Aronovitch
John and Dorothy Piquado	Thomas Dixon and Annmarie Karayianes	Eileen Bates-Bordies
Walter and Christine Powers	Miriam Erick	Arnold Benson
The Pundits of Yale	Alexis Furlong	Roberta Brayer
Michael and Sarah Cathererine Richardson	Bryan Graf	Karen Brickman
Sharon Richardson	Megan Greenstein	Russell Brummer
Mary and Dave Rogers	Rebecca Gregoire	Kim Bruneau
Joe Sampson	Dean Gulezian	Elizabeth Bulasko
Carole Sands	Betty Heaney	Kevin and Mary Ellen Canty
Patte and Steve Sarausky	Nancy Henn	Janice Cardarelli
Robert Sawyer	Andrea Houghton	Nancy Carsen
Dennis and Kerry Schneider	Christopher Kiley	Melody Carter
Melissa Shakun	Carolyn Kobsa	Bill Charles
Jack and Doreen Sheppard	Eliza J Leadbeater	Tyler Christie
Chris Slater	Jonathan and Glenna Lee	Paul Ciborowski
Larry Spencer	Marilyn Lezberg	Timothy Cullen
Thomas Staley	Charlene Malek	Alexander Davis
Judith Stern	Jessie Marden	Beth Day
Samantha Tella	Joel Mercier	Judith Dean
Margaret Turner	Monica Michalsky & Tom Stankosky	Jack Degange
Joyce Tyler	Gerard and Joanne Morin	Gary and Lisa DiMartino
Barbara Ulm	Linda Morse	Maryann Dodge
William Vanca	Savannah Muzzey	Sarah Duffley
Deborah Vargo	New Hampshire Center for Nonprofits	Richard Duke
John and Karen Warren	Antoinette Olden	Clark Dumont
Hazel Zimmer	Jeffery & Jayne Peck	Linda Enderwick
	Andrew Pinard	Jean Etter
	Glen Potter	Melanie Flanagan
		Mark and Linnea Fraser
		Darlene Fritz
		Christina Fuller

**\$50+**

Anonymous

Frank Garcia  
 Virginia Gassman  
 Casey and Drew Gerken  
 Sandra Greenberg  
 Amy Grimm  
 Jennifer A Grunbeck  
 Nancy Hall  
 Madeline Hanafin  
 Hannaford Community  
 Bag Program  
 Janis Hardiman  
 Ann Hebert  
 Andrew Hendrick  
 Sussan Henkel  
 Alison Hildebrand  
 Joia Hughes  
 Amanda Jennison-Sousa  
 JM  
 Eliot Johnson  
 Karen Kharitonov  
 Valerie and Karl Kimball  
 Kathryn Kittredge  
 Daniel Klingenstein  
 Pamela Klingler  
 Kathy Lacey  
 John & Nancy Law  
 Cory Lawson  
 Nathalie Leclair  
 Michelle Levinson  
 Denise Livingstone  
 Thad Long  
 Cassandra Lovering  
 Heidi Luscher  
 Debra Macone  
 Alexandra Manoloff

Cassandra Mason  
 Marcia McCaffrey  
 Deirdre A Meehan  
 Sheila Michalke  
 Daniel Moody  
 Paul Nelson  
 Junette Pearson  
 Normand Pinette  
 Karen Plummer  
 Michael Portrie  
 Alan Provance  
 Elizabeth Ricci  
 Veronica Rosa  
 Janine M. Schifino  
 Patricia Schlesinger  
 John and Linda Shelley  
 Jennifer Simon  
 Penny and Paul  
 Susan Swain  
 Kathleen Sweeney  
 Jennifer Szendre  
 Allison Szklarz  
 Evelyn Tate  
 Judy Taylor  
 Christa Tsechrintis  
 Cynthia Unangst  
 Marie Valliere  
 Valerie Verge  
 Patricia Weston  
 Kim Whitney  
 Amanda Whitworth  
 Shelley Wieler  
 Lowell Williams  
 Patricia Williams  
 Lorna Zammitt

**Thank you to the following  
 donors who have sponsored  
 new chairs for the  
 amphitheatre!**

Barbara and Charles Birdsey  
 Eden and Nate Bowditch  
 Mike and Lisa Brien  
 Steve and Judy Brown  
 The Cottages of Wolfeboro  
 Alexa Dembiec  
 James and Bonnie Doherty  
 Ann Donahue  
 Kelly Dunn  
 Dawson Ellis and  
 Delaney Andrews  
 Chuck and Diane Fray  
 Liz and Bob Gabel  
 Richard and Carol Gerken  
 Rebecca Gregoire  
 James Whittredge Hill  
 Charlene Malek  
 Jessie Marden  
 Sean and Helen Murphy  
 Savannah Muzzey  
 Kaitlin O'Neil  
 Charlotte Otto  
 Neil and Lesley Pankhurst  
 Carolyn S Scattergood  
 Chris Slater  
 Ambassador Paul Speltz and  
 Renee Speltz  
 Monica Michalsky and Tom Stankosky  
 Lydia and Nathan Torr  
 John and Muff Walker  
 Barbara and Gordon Webb  
 Mr. and Mrs. Brian Winslow  
 John and Karen Yeigh  
 Barbara Zeckhausen  
 Wellesley College Theatre

# *Morgenstern Sustainers*

Anonymous  
 Anonymous  
 John and Linda Browne  
 J.W. Hill, Consultant  
 Sarah Bunkley and  
 Richard Smith

Alison and Christopher Casco  
 Katie Guilmett  
 Ira and Lynn Keltz  
 Susan and Douglas McLane  
 Kaitlin O'Neil  
 Joe Sampson

Jason and Deanne Sargent  
 Mary and Dave Rogers  
 Graham and Julia Thomson  
 John and Muff Walker  
 Barbara and Gordon Webb  
 Brian Winslow

These are people who participate in the  
 continued success of the Playhouse through their recurring  
 gifts, and we are so grateful for the ongoing support.

# ***We appreciate your support!***

**Did you know that in typical years ticket sales only account for about 50% of what it takes to run the Winnepesaukee Playhouse?**

Sadly, these have not been typical years recently. But patrons just like you have been so supportive and generous. No gift to the Playhouse is too small, and every donation helps us keep artists employed and audiences entertained throughout the year. If you would like to become a donor, or make an additional donation, your tax-deductible gift will be instrumental in helping to ensure the Playhouse can continue to provide the level of programming you have come to expect.

You can make a donation today by visiting the box office, calling us at (603) 279-0333, or visiting our website: [www.winnepesaukeeplayhouse.org](http://www.winnepesaukeeplayhouse.org)

## **Is it time to take your involvement to the next level?**

- You could make a one-time gift of \$100
- Join the Morgenstern Sustainers with a monthly gift of \$10
- Join our Directors' Circle at \$1,000 a year (\$85/month)

You can be the one to inspire, engage, and entertain the community by making a tax-deductible gift. You can mail us a check, use your credit card online or over the phone, or stop by the box office today.

## **There are even more creative ways to support the Winnepesaukee Playhouse!**

Have you ever considered including the Winnepesaukee Playhouse in your will? A gift through your will or estate plan enables you to support our mission and make a difference in the future of the Winnepesaukee Playhouse. Did you know you can use your IRA required minimum distribution to make a tax-free donation to a non-profit like the Winnepesaukee Playhouse?

Questions? Speak with your financial advisor, or contact Thom Beaulieu at 603-279-0333 or [thom@winniplayhouse.org](mailto:thom@winniplayhouse.org).



# LIMITED EDITION

Handmade 20th Season Mugs  
Created by local artist Emily Wernig



## About the Artist

Emily's love for clay started in high school and intensified during her studies at the University of New Hampshire. Wernig graduated Summa Cum Laude from the UNH in May 2018 with a BFA in ceramics and drawing. Emily has had her work exhibited at the Portsmouth Music and Art Center, Bedrock Gardens, UNH Museum of Art and Sotheby's. Post-grad, Emily taught at The Bascom Center for the Visual Arts in Highlands, North Carolina as the Ceramic Teaching Resident. She worked in the Dave Drake Studio Barn, under the direction of Frank Vickery, teaching classes and assisting with general studio upkeep. She now resides in New Hampshire, making and selling her pottery, as well as teaching ceramics at UNH.

**THE**  
**FITNESS**  
*Edge*

WE OFFER  
LIVE & ZOOM  
CLASSES

BOOT CAMP PLUS | INDOOR CYCLING | TOTAL BODY TONE  
BARRE | POSTURE | YOGA | ZUMBA | TRX AND MORE!

169 DANIEL WEBSTER HIGHWAY  
MERIDITH NH

78 WHITTIER HIGHWAY  
MOULTONBOROUGH NH

OFFERING NH LAKES REGION 2 CONVENIENT HEALTH CLUB LOCATIONS!



(603) 279-0411

[WWW.THEFITNESSEDDGENH.COM](http://WWW.THEFITNESSEDDGENH.COM)

*Birch Hill*  
BOOKKEEPING & CONSULTING

Mailing Address:

Post Office Box 101

Moultonborough, NH 03254-0101

Cell: 603-476-2521

Fax: 1-877-495-6388

James W. Hill  
Owner

*Have Laptop. Will Travel...*

email: [jim@birchhill.net](mailto:jim@birchhill.net)

Visit us online at [www.birchhill.net](http://www.birchhill.net)



Logos  
Branding  
Graphic Design & More

**LogoFurther.com**

ted@logofurther.com

603.562.6909



**JOE WALKER**  
Marketing Services

"Vision without action is a daydream.  
Action without vision is a nightmare."

-Japanese Proverb

*Does your business have vision?*

- Strategic business plan development
- Promotional / advertising plans
- Marketing plans
- Non-profit fundraising plans
- Presentations / guest speaking

JoeWalkerMarketing.com  
info@joewalkermarketing.com

603-731-0693

**Franchisee**  
Call 603-369-4376  
to advertise.



## CHRISTOPHER P. WILLIAMS ARCHITECTS, PLLC

PO Box 703 • Meredith, NH 03253 • 603-279-6513  
[www.cpwarchitects.com](http://www.cpwarchitects.com)



Our award winning firm has provided innovative and environmentally sensitive design solutions since 1984. We specialize in sustainable building practices and offer expertise in incorporating green systems into client projects to enhance and protect the ecosystem, and conserve natural resources. We strive to design buildings that fit into their cultural context and environment.



# MIRACLE FARMS

## LANDSCAPE CONTRACTORS

Moultonborough, New Hampshire (888)288-8252



*Extraordinary landscapes begin here!*

Landscaping

Maintenance

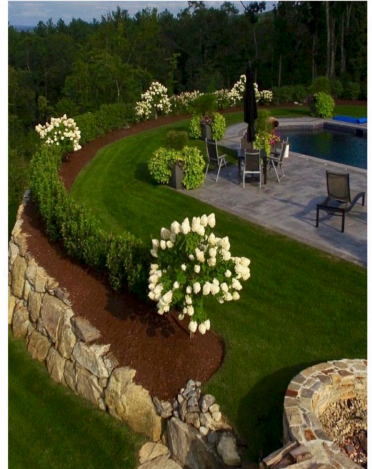
Hardscapes

Mulch/Loam/Compost

Firewood Dry/Green

603-253-9292

[www.miraclefarmslandscaping.com](http://www.miraclefarmslandscaping.com)



The Winnepesaukee Playhouse is grateful to the following foundations for their support.



STEINWACHS FAMILY  
FOUNDATION



New Hampshire  
State Council on the Arts



NEW HAMPSHIRE  
CHARITABLE FOUNDATION

The Winnepesaukee Playhouse is supported in part by a grant from the New Hampshire State Council on the Arts & the National Endowment for the Arts.



# Supporting the Arts LAURA & GARY STEPHAN

*In loving memory*

Dorothy Marie Schrader

Gerald Lewis Schrader



**The Laconia Daily Sun Don't Miss a Day!**

Read online at [laconiadailysun.com](http://laconiadailysun.com)

sign up for daily newsletters • home delivery call (603)737-2020



**Lakes Region  
FENCE**

**Residential Fencing Specialists**  
FULLY INSURED

Proudly  
Supporting  
The  
Winnepesaukee  
Playhouse



**SINCE 2005**

[www.LRFence.com](http://www.LRFence.com)

222 Country Club Rd  
Gilford, NH 03249

Call Us for a Free  
Estimate!  
603.524.6061

**BRAVO WINNI PLAYHOUSE!**

**Patrick's**  
IRISH ROOTS - AMERICAN SPIRIT

[patrickspub.com](http://patrickspub.com) • 603) 293-0841

18 Weirs Rd Gilford, NH



233 Daniel Webster Hwy  
Meredith, NH 03253  
603-279-6212

[hartsturkeyfarm.com](http://hartsturkeyfarm.com)

Regular  
Children &  
Mini  
Menus  
Available  
Gift Shop  
Catering

**IRWIN**  
AUTOMOTIVE GROUP

**603-524-4922 | [irwinzone.com](http://irwinzone.com)**

*Serving New Hampshire Since 1957*

59 Bisson Avenue Laconia, NH

446 Union Avenue Laconia, NH







**Winnepesaukee Playhouse  
Merchandise  
For Sale in our Lobby!**



*Give the gift of live theatre!*

**Winnepesaukee Playhouse gift certificates  
make great stocking stuffers**

**Stop at the box office on your way out to  
purchase one for a special theatregoer this  
holiday season**

# Our Real Estate Goals are simple....

***They're Yours!***



**Scott Knowles**

603.455.7751

scottknowles@metrocast.net

**Chris Adams**

603.393.7993

adamschris195@gmail.com

**Chris Kelly**

603.677.2182

chriskelly@baysidenh.net



**We have everything you need in real estate**

208 Daniel Webster Highway, Meredith, NH 03253

(603) 279-0079

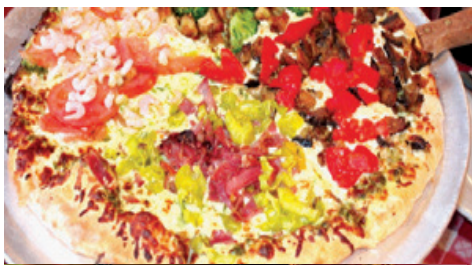
604 Main Street, Laconia, NH 03246

(603) 527-8200

[www.baysideplatinumgroup.com](http://www.baysideplatinumgroup.com)



*Very Music Very Italian & Very Good!*



**Celebrating  
34 Years!**

# *Giuseppe's* *Pizzeria & Ristorante*

*Live  
Music*

**This unique and popular restaurant is  
one of the Lakes Region's most loved since 1989!**  
Serving Award-Winning Gourmet Pizza, Pasta, Seafood,  
Steak, Chicken, Veal, Vegetarian, Vegan, Gluten-Free,  
Soup, Salads, Desserts, Cappuccino,  
Beer, and a fabulous selection of Wine and Spirits!

**Lunch and Dinner Daily**  
*Reservations are highly recommended and greatly appreciated!*

Located on the corner of Routes 3 & 25  
Mill Falls Marketplace, Meredith, NH

**Call (603) 279-3313  
For Reservations & Take Out  
Visit [giuseppesnh.com](http://giuseppesnh.com)**



**LAKES REGION  
COMPUTER**

**Celebrating 25 Years in Business!**  
**A ONE STOP TECH SHOP**

Apple • PC • Verizon • Repairs  
IT Business Services

## **Visit Our Retail Store!**

- Verizon Authorized Retailer
- Apple Premium Service Provider
- Selling Apple, PC, Phones & Accessories
- Phone and Computer Repairs

## **IT Business Services Include:**

- Computer Systems and Network Installations
- Systems Monitoring and Management
- Backup and Disaster Recovery
- Security and Compliance
- Cloud Solutions
- IT Inventory and Planning
- On-Site and Remote Support
- Wireless Network Planning and Installations
- Security Camera Installations
- Nextiva Business Phone Systems

12 Main Street, Center Harbor, NH 03226

Phone: 603.253.9847 • Website: [lakesregioncomputer.com](http://lakesregioncomputer.com)

Follow us!  [lakesregioncomputer](https://www.instagram.com/lakesregioncomputer)  [lakesregioncomputer](https://www.facebook.com/lakesregioncomputer)