

**THE Winni
PLAYERS**

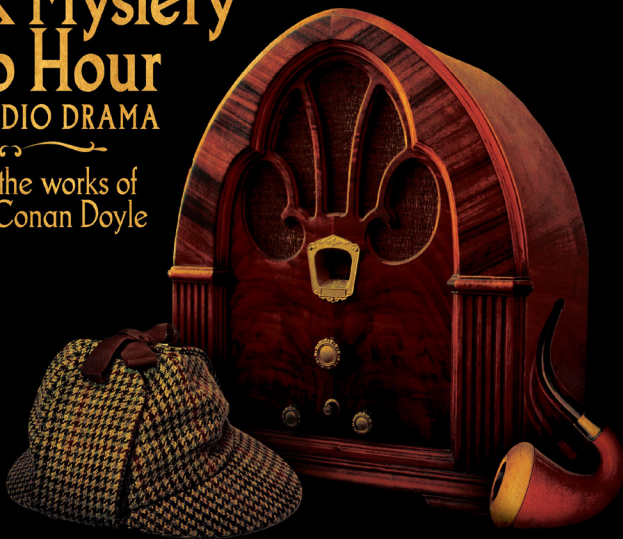
Community Theatre at
the
WINNIPESAUKEE
playhouse

2024 SEASON



**The
Sherlock Mystery
Radio Hour**
A LIVE RADIO DRAMA

Based on the works of
Sir Arthur Conan Doyle



FEBRUARY 22-25

SPONSORS:



WINNIPESAUKEEPLAYHOUSE.ORG

603.279.0333

33 Footlight Circle, Meredith NH 03253



Meredith Marina

603.279.7921



BOAT RENTALS & Jet-Ski Rentals



Make A Splash!



One of the largest
BOAT RENTAL FLEETS
on Lake Winnepesaukee!

NEW & USED BOAT SALES

Hunter

tió
ADAPT

Sweetwater

Sanpan

Aqua Patio

Premier
Pontoons

MARINE STORE & BOATING ACCESSORIES

603-279-7921



BOAT SALES • BROKERAGE • VALET • SERVICE • RENTALS • STORAGE

2 Bayshore Drive, Meredith, NH • Meredith Bay • Lake Winnepesaukee



www.meredithmarina.com

Board of Trustees

Renee Speltz
Chair
Retired Mental Health Counselor and
Consultant

Bill Bald
Vice Chair
President
Melcher and Prescott Insurance

Raymond Abramson, CPA
Treasurer
Owner
Abramson & Company, LLC

Kaitlin M. O'Neil
Secretary
Attorney
Normandin, Cheney & O'Neil, PLLC

Members at Large

Eden Unger Bowditch
Author and Lecturer
Plymouth State University

Julie Hirshan Hart
Editor
The Laconia Daily Sun

Lesley Pankhurst
Co-Founder and Patron and
Company Services Director
The Winnepesaukee Playhouse

Kathleen Sweeney, CPA
Owner
Kathleen Sweeney CPA



Artistic Director.....Timothy L'Ecuyer
Managing Director.....Thom Beaulieu
Patron & Company Services Director.....Lesley Pankhurst
Dir. of Education & Community Engagement.....Cory Lawson
Production Manager.....Amanda Dickinson
Technical Director.....Matthew Hutchens
Bookkeeper.....Donna Findlay

*The Winnepesaukee Playhouse
has many volunteer
opportunities. To find out how
you can become a volunteer,
contact us at
info@winniplayhouse.org*

The Winnepesaukee Playhouse
33 Footlight Circle, Meredith NH 03253
Tel. (603) 279-0333

www.winnepesaukeeplayhouse.org



For Your Information

Please turn your cell phone and any other electronic devices completely off. Leaving them on silent or vibrate may interfere with our communication systems and interrupt the flow of the performance.

Please refrain from photography or recordings of any kind, as this violates our royalty agreements.

Please note that if you must, in an emergency, use the restrooms during the performance, our House Manager will return you to your seat at an appropriate break in the performance.

Please be sure you can hear us! For our theatre patrons who have experienced varying degrees of hearing impairment, please take advantage of our state-of-the-art **Assisted Listening System**.

If you are a hearing aid user who has a tele-coil function in your hearing aid you will be able to access our system directly after turning on that function. You may need to contact your hearing aid provider to inquire about the tele-coil in your particular hearing aid and ensure that it has been activated and instructed on how to turn it on when you are in the theatre. For patrons without tele-coil hearing aids, we have a limited number of headsets available on a first-come, first-served basis. Please see the box office if you would like to use one.

The Assisted Listening System is made possible by a generous donation from The Maurice and Rhoda Miller Endowment Fund.

Please keep in touch! Visit our website at www.winnipesaukeeplayhouse.org to join our email list. You can also follow us on Facebook and Instagram.

Dear Friends,

On behalf of everyone at the Winnepesaukee Playhouse, it is my great privilege to welcome you and thank you for joining us for the 2024 Season! I am constantly inspired by the remarkable passion of this community. I am grateful for the skilled artists who bring theatre to life on our stage, the intrepid staff members who create and maintain the structures and pathways underpinning the work, the members of our dedicated board of trustees who see to the health and longevity of the organization, and especially you—the patrons who engage in the work with generosity, openness, and vigor.



Engaging with the arts, especially theatre, has always helped me wrestle with big questions. It does this by narrowing the aperture and challenging me to focus on specific human stories—both those that are familiar and those that are outside of my experience. A mentor of mine is fond of summarizing this by saying that “theatre is the gym for the empathy muscle.” Tales of students in a ridiculous school surviving the antics of their outrageous teachers, members of a family in Northern Ireland trying to hold on to hope and each other in the midst of *The Troubles*, a play telling the story of the arrival of the literal devil... all of these stories can help transform the incomprehensibly large into something more navigable.

During an election year, I often find myself wrestling with big questions about power. As we take part in this important national debate, my thoughts can tend a little toward the metaphysical: How should an individual ethically obtain and use power? What do we give up when we prioritize seeking power? What restrictions should be imposed on it? Is there any way to prevent structural inequities from continually granting power to only a select few? I also think a lot about the obligations those in power have to those who lack it.

Then, typically, I roll over in bed and tell myself for the fifth time that I really need to go to sleep because I have to be awake in a few hours.

I don't expect any of us will walk out of the theatre today with simple, concrete answers to big questions about power or, frankly, anything else. But I know it's worth engaging in the conversation with openness and empathy. I'm so grateful we're here together to do that. Maybe the hours we spend here will equip us with a few new ways of talking with each other, something we can all use as Election Day draws closer.

Thank you for engaging with this work—for being part of this community.

Timothy L'Ecuyer
Artistic Director

Supporting the causes you care about
and the communities we call home.

We bank on kindness.



Proud Supporter of
The Winnepesaukee Playhouse



BNH.Bank
Member FDIC



FIND YOUR ESCAPE!

DOWNTOWN MEREDITH

603.279.3905

312 Daniel Webster Hwy

DOWNTOWN LACONIA

603.409.6756

630 Main St.

www.innisfreebookshop.com



**BIG ENOUGH TO SERVE YOU.
SMALL ENOUGH TO KNOW YOU.**

NORMANDIN, CHENEY & O'NEIL, PLLC
ATTORNEYS AT LAW

Experience you can rely on. Advice you can trust.

*Wills, Trusts and
Estate Planning
Real Estate and
Land Use*

*Commercial and Corporate Law
Injury Law
Civil and Criminal Litigation*

603-524-4380
(or 1-800-529-0631)
www.ncolaw.com

*213 Union Avenue
P.O. Box 575
Laconia, New Hampshire 03247*

We are a charitable organization which exists to meet the health needs of individuals within the communities **we serve.**

CONCORD HOSPITAL
Your Regional Health System

CONCORD | FRANKLIN | LACONIA

concordhospital.org

*We are thrilled to support
The Winnepesaukee Playhouse
Temple B'nai Israel*

Laconia, NH



Temple B'nai Israel



THE
New Hampshire
**JEWISH
FOOD
Festival**



TBINH.ORG

*The Center of Jewish Life
in The Center of New Hampshire*



Fire & Water -
Cleanup & Restoration™

**FASTER TO
ANY SIZE
DISASTER**



SERVPRO OF THE LAKES REGION
603-527-2518

Like it never even happened.®

2024 SHOW LISTINGS

PROFESSIONAL THEATRE

June 21-July 6: Jersey Boys

The Story of Frankie Valli & the Four Seasons

Book by Marshall Brickman and Rick Elice, Music by Bob Gaudio,

Lyrics by Bob Crewe

Sponsored by:



A jukebox musical that's "just too good to be true!" With phenomenal music, memorable characters, and great storytelling, *Jersey Boys* follows the fascinating evolution of four blue-collar kids who became one of the greatest successes in pop-music history. Winner of both the Tony and Olivier Awards for Best Musical, the show features chart-topping hits including "Sherry," "Big Girls Don't Cry," "Can't Take My Eyes Off You," and more!



July 11-20: Witch

By Jen Silverman

Sponsored by:



The devil comes to town
This fiendishly funny and anachronistically contemporary play is a mature and inventive retelling of a Jacobean drama. The arrival of Scratch, the literal devil, tempts the residents of Edmonton to confront – and perhaps indulge – their darkest wishes... in exchange for their souls. Elizabeth should be his easiest target, having been labeled a "witch" and cast out by the town, but her soul is not so readily bought. Has the devil met his match?



2024 SHOW LISTINGS

PROFESSIONAL THEATRE

July 25-August 3: La Cage aux Folles

Book by Harvey Fierstein, Music and Lyrics by Jerry Herman

Based on the play by Jean Poiret

The Broadway smash hit musical comedy!

The “rather gaudy, but also rather grand” winner of six Tony Awards including Best Musical, Best Score, and Best Book, **La Cage aux Folles** is a musical comedy about family that is filled with glitz, glamour, and drag queens! Based on the hit French farce that also inspired Hollywood’s **The Birdcage**, this Broadway smash includes favorite songs like “I Am What I Am” and “The Best of Times.” It encourages us all to stay true to ourselves.

Sponsored by:



August 8-17: Richard III

By William Shakespeare

“Every tale condemns me for a villain”

Performed as a heated presidential election in the United States ramps up, the story of Shakespeare’s most notorious antihero asks us to consider the price that we pay when we seek power. A small, powerful ensemble of actors brings this classic story to new life in a contemporary production that reverberates with fresh relevance.

Sponsored by:


NORMANDIN, CHENEY & O'NEIL, PLLC
ATTORNEYS AT LAW

98.3^{fm}
Frank

2024 SHOW LISTINGS

PROFESSIONAL THEATRE

August 22-September 1: *In the Heights*

Music and Lyrics by Lin-Manuel Miranda, Book by Quiara Alegría Hudes
Conceived by Lin-Manuel Miranda

Lin-Manuel Miranda's first Broadway hit!

In the Heights tells the story of a vibrant Latinx community in New York's Washington Heights neighborhood – a place where the coffee from the corner bodega is light and sweet, the windows are always open, and the breeze carries the rhythm of three generations of music. It's also a community on the brink of change, full of hopes, dreams and pressures, where the biggest struggles can be deciding which traditions you take with you, and which ones you leave behind.

Sponsored by:

Supporting the Arts
LAURA & GARY STEPHAN
In loving memory
Dorothy Marie Schrader
Gerald Lewis Schrader

October 19, 26-27: *A Year with Frog and Toad*

Music by Robert Reale, Book and Lyrics by Willie Reale
Based on the books by Arnold Lobel

A timeless story of friendship

Arnold Lobel's well-loved books have been turned into a whimsical show following two great friends – the cheerful, popular Frog and the rather grumpy Toad – through four fun-filled seasons. With an upbeat score and lots of laughs, *A Year with Frog and Toad* is the ultimate family musical.

Professional Theatre for Young Audiences

Sponsored by:



Delivering on **A promise.**



2024 SHOW LISTINGS

EDUCATION DEPARTMENT

February 9-18: Mr. Burns, a post-electric play

By Anne Washburn, Score by Michael Friedman, Lyrics by Anne Washburn

A tale of survival... and the enduring power of The Simpsons

In this dark comedy, a group of post-apocalyptic survivors make sense of an environment that no longer makes sense by recreating their vanished world through storytelling (some of it featuring Bart Simpson), turning the pop culture of our era into the mythology of the future.

Performed by students ages 13-18

Sponsored by:



NEW
HAMPTON
SCHOOL

February 10-17: Sideways Stories from Wayside School

Adapted by John Olive, Based on the novels by Louis Sachar

The silliest stories from the strangest school!

This hilarious play based on Louis Sachar's beloved book series explores the happenings at Wayside School, which is kind of a strange place. It's thirty stories high with only one classroom per story. (Well, actually, only twenty-nine stories high, because Miss Zarves on the 19th floor doesn't exist.) Whether it's teachers turning students into apples or the cow hiding in the classrooms, all is not normal at this mysterious school. Performed by students ages 8-13.

Sponsored by:



NEW
HAMPTON
SCHOOL

 **DELTA DENTAL**

2024 SHOW LISTINGS

COMMUNITY THEATRE

February 22-25: The Sherlock Mystery Radio Hour

A Live Radio Drama

Based on the works of Sir Arthur Conan Doyle

A Yearly Tradition!

The Winni Players' annual live radio play is back! Step back in time to when radio was king and the family gathered around it for their favorite dramas. This year you will get transported into the captivating world of Sherlock Holmes and Dr. John Watson. Join us for an evening filled with suspense, deduction, and intrigue as we present two riveting radio-play adventures featuring the great detective himself: "The Case of the Haunted Chateau" and "The Case of the Iron Box".

Sponsored by:



April 25-28: The Ferryman

By Jez Butterworth

A "fiercely gripping play." - The New York Times
County Armagh, Northern Ireland, 1981. The Carney farmhouse is a hive of activity with preparations for the annual harvest. A day of hard work on the land and a traditional night of feasting and celebration lie ahead. But this year they will be interrupted by a visitor. Winner of the Tony Award for Best Play, it's a powerful exploration of humanity's resilience and the unspoken secrets of Ireland's past.

Sponsored by:

Supporting the Arts
LAURA & GARY STEPHAN
In loving memory
Dorothy Marie Schrader
Gerald Lewis Schrader

2024 SHOW LISTINGS

SPECIAL EVENTS

March 1-3: On the Exhale

By Martin Zimmerman

When tragedy strikes, take a breath and get a grip

When a senseless act of violence changes her life forever, a liberal college professor finds herself inexplicably drawn to the very weapon used to perpetrate the crime--and to the irresistible feeling of power that comes from holding life and death in her hands. Peering down the barrel of a uniquely American crisis, she begins to suspect that when it comes to gun violence, we're all part of the problem. This is the New Hampshire premiere of Martín Zimmerman's gripping play, which draws you into the white-hot center of our country's most urgent debate.

Presented by



About theatreKAPOW
theatreKAPOW (www.tkapow.com)
develops ensemble productions of great dramatic literature to explore the human experience and inspire and challenge both artist and audience. We put stories on stage and create a safe space to start conversations to begin to heal communities, families, and hearts.

November 16: ImprovOlympics!

Join teams from local non-profit organizations for a night of improv comedy and fundraising! This popular event will pit local amateur comedians against each other in a **Whose Line Is It Anyway?** battle to make you laugh and raise funds for worthy local causes.

Are you associated with a local non-profit and would like to get involved?
Email info@winniplyhouse.org to find out how you can put a team together!

2024 SHOW LISTINGS

EDUCATIONAL AND COMMUNITY THEATRE

December 11-15: Roald Dahl's Matilda the Musical

Book by Dennis Kelly, Music & Lyrics by Tim Minchin

Sometimes you have to be a little bit naughty!

In 2010, Dahl's beloved children's book leapt to the stage bringing his characters to life with dynamic songs and innovative staging, winning 16 Best Musical awards! It's the inspiring story of an extraordinary girl with an unbounded imagination who proves that, despite the odds, you can do anything you put your mind to.

Performed by local adults and students ages 8 and above.

Sponsored by:

Supporting the Arts
LAURA & GARY STEPHAN
In loving memory
Dorothy Marie Schrader
Gerald Lewis Schrader



The Winnepesaukee Playhouse Education Department promotes the developmentally appropriate acquisition of theatrical skills, fosters a life-long appreciation of the technique, history, and literature of theatre and its ancillary fields of study, and—above all—seeks to inspire its students to use theatre as a tool to develop empathy, with which they may explore and come to better understand the world.



The Winni Players Community Theatre uses live theatre to provide its members with opportunities for artistic expression, personal growth, and friendship.

We build community through theatre.

We're in Your Corner

People today can spend nearly half their lives over the age of 50. That's a lot of living. So, it helps to have a wise friend and fierce defender like AARP in your community.

Find us at aarp.org/nh.



Caring has always been at the heart of everything we do. By building and nurturing relationships, we can cultivate a community where we all thrive.



800.922.6872 mvsb.com



HART'S
TURKEY FARM
Restaurant

Family Dining Since 1954

233 Daniel Webster Hwy
Meredith, NH 03253
603-279-6212
hartsturkeyfarm.com

Regular
Children &
Mini
Menus
Available
Gift Shop
Catering

DELTA DENTAL

www.nedelta.com

IRWIN
AUTOMOTIVE GROUP

603-524-4922 | irwinzone.com

Serving New Hampshire Since 1951

59 Bisson Avenue Laconia, NH | 446 Union Avenue Laconia, NH

TOYOTA Ford LINCOLN HYUNDAI



OVERHEAD DOOR OPTIONS LLC

603-279-5700

185 Waukewan Street, Meredith, NH
www.OverheadDoorOptions.com

C.H.I. LiftMaster
OVERHEAD DOORS

Overhead Doors Options, LLC. offers a wide variety of quality residential and commercial garage doors and openers. We provide prompt, professional maintenance and repair service on all makes and models of garage doors.

A FAMILY OWNED AND OPERATED GARAGE DOOR COMPANY SERVICING THE LAKES AND WHITE MOUNTAIN REGIONS FOR OVER 30 YEARS!



Visit our Showroom • We have 10 full doors on display

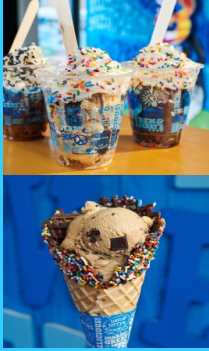


BUY ONE GET ONE 50% OFF!

Open 'til 10pm daily

**Mill Falls Marketplace
Meredith
603-279-2200**

*Equal or lesser item is free.
Excludes merchandise, pints & quarts.
Expires 12/2024*



As-Seen on the Phantom Gourmet!

**Get 10% OFF
With This AD!***



**Amazing dining
Before or after the show!**



blue
bistro

The Finest Steaks & Seafood
on Winnepesaukee

- Brilliantly Crafted Cuisine Overlooking the Lake
- USDA Prime Beef, Fresh Seafood & Exquisite "HopeMade" Desserts
- Live Music | Bountiful Gourmet Breakfasts
- "The TOP SPOT to EAT on Lake Winnepesaukee!" - Phantom Gourmet

NazBar
Grill

A Seriously Good Time!

- Lunch, Dinner & Fabulous Tropical Drinks - Waterside!
- LIVE Bands on the Beach
- Spectacular Sunsets!

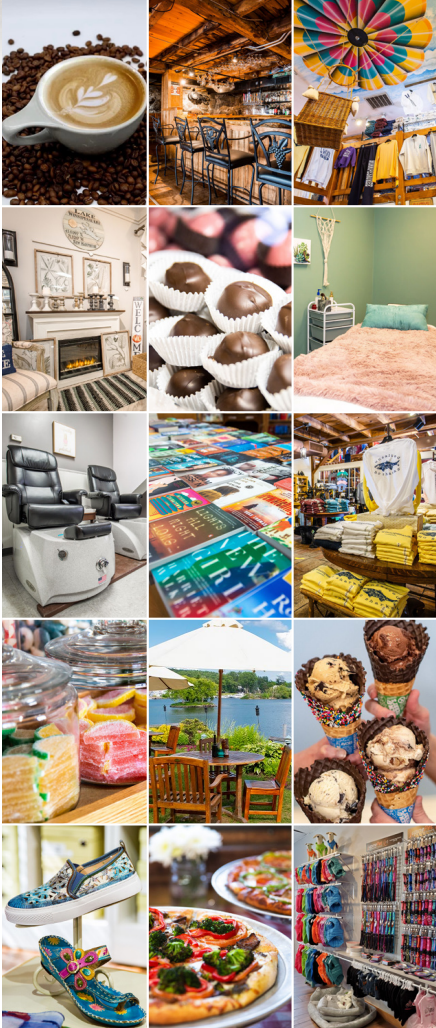
* With purchase of one entree. Cannot be combined with other offers. Valid through 10/1/24 at The Blue Bistro or NazBar & Grill.



1086 Weirs Blvd. - Laconia, NH | 888.55.NASWA | naswa.com



SHOP. DINE. EXPLORE.



Lakes Region's Premier Shopping Destination

Unique Marketplace Shops
5 Distinctive Restaurants • 4 Inns
Boardwalk, Park & Sculpture Walk
Friday Night Music - July & August

millfalls.com/Marketplace • Routes 3 & 25 Meredith, NH



Proud to partner with Winnepesaukee Playhouse to provide another season of spectacular performances.

Named Best-In-State Banks for NH by Forbes Magazine 2022



FSB
Franklin Savings Bank
FSBNH.BANK



#HappyUp at The Studio!

Experience the Lakes Region's most joyful and eclectic shopping experience for yourself!



598 Main Street, Laconia, NH
603-524-8008 • thestudionh.com

the
WINNIPESAUKEE
playhouse

FOLLOW US ON



Construction Management
Construction Services



"Progress on Purpose"
Since 1969

51 Church Street, Laconia, NH
www.bpsnh.com 603-524-3411



www.lavalleys.com

603-524-1692

32 Gilford East Drive, Gilford NH

Hours of Operation:

Monday - Friday: 7am-5pm

Saturday: 8am-3pm

Sunday: Closed



There are many things that make Lovering different. It's not just about selling & servicing high quality vehicles. We believe life is about doing the things you love with the people you care about.

- Family-Owned & Operated Since 1996
- 6th Largest Women-Run Business in NH*
- Top 10 Nationwide for Best Customer Service Reputation**
- A Mission of Giving Back to The Community

*Business NH Magazine (October 2022 Issue). **Reputation (Automotive Industry Reputation Report 2022).



We are proud to be the largest luxury brand north of Concord for both Sales and Service.

lovingmerced.com | (603) 279-8000
201 Daniel Webster Highway
Merridub, NH 03253

MISIASZEK
TURPIN



ARCHITECTS

Celebrating two decades of client-dedicated design
residential | non-residential | historic preservation



Melcher & Prescott INSURANCE

KNOWLEDGE. TRUST. CONFIDENCE.



Since 1862 Melcher & Prescott Insurance has been a proud sponsor of the arts and culture in our community.

Our local professional staff are here to assist you with all your insurance needs including homeowners, automobile, watercraft, business and employee benefits.

We work closely with our clients to secure the proper coverage at the best price!

www.melcher-prescott.com | insure@melcher-prescott.com | 603-524-4535



Best Insurance Company

This is what retirement looks like.




An active community of friends is waiting for you at Taylor.

Taylor Community is located in the beautiful Lakes Region of New Hampshire with campus locations in both Laconia and Wolfeboro. Finding a home at Taylor means more than access to a stunning new cottage or apartment - it means receiving the keys to present and future peace of mind.

Whether you prefer an active lifestyle filled with fitness classes and an extensive lineup of social and recreational opportunities, or would rather enjoy a fine-dining experience with friends after a day spent by the lake...

Taylor is the place for you!



 (603) 366-1400 / taylorcommunity.org
A not-for-profit since 1907

Discover Taylor Community
taylorcommunity.org

Laconia
435 Union Avenue
Laconia, NH 03246

Wolfeboro
83 Rolling Wood Drive
Wolfeboro, NH 03894

Mello
Moose
COFFEE HOUSE

136 Daniel Webster Hwy, Meredith
(603) 677-7037

Great coffee, breakfast sandwiches, and
fresh baked goods to start your day!

TWIN BARN
BREWING CO

194 Daniel Webster Hwy
Meredith



**Bring Ticket Stub To
Twin Barns for 50%
off apps**

The Common Man Family – Setting the Stage for Uncommon Dining



SCAN for MENU

LAGO



SCAN for MENU

LAKEHOUSE

Bay Point at Mill Falls • (603) 279-2253

theCMAN.com

Church Landing at Mill Falls • (603) 279-5221



SCAN for MENU

CAMP



SCAN for MENU

TOWN DOCKS

Chase House at Mill Falls • (603) 279-3003

OPEN MAY - SEPTEMBER! • (603) 279-3445

**GERMAN
MOTORSPORTS**

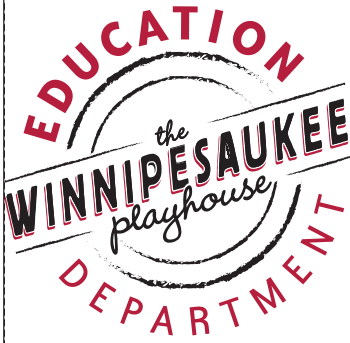
PORSCHE - ROVER - AUDI - VOLKSWAGEN - BMW - MERCEDES - MINI

Authorized BOSCH Service Center



(603) 524-5016 Castrol

www.germanmotorsportsusa.com



The Winnepesaukee Playhouse Education Department promotes the developmentally appropriate acquisition of theatrical skills, fosters a life-long appreciation of the technique, history, and literature of theatre and its ancillary fields of study, and—above all—seeks to inspire its students to use theatre as a tool to develop empathy, with which they may explore and come to better understand the world.



Educational Programming at the Winnepesaukee Playhouse includes:

- Four fully realized productions annually for students ages 8-18
- Summer camps for students ages 5-12
- Focused summer training for students ages 13-18
- Classes and workshops for participants of all ages
- Post-performance talkbacks
- The Symposium Series
- Backstage tours
- Informative articles in playbills
- Teacher training
- College internships
- Theatre and arts education advocacy



For more information...

winnepesaukeeplayhouse.org/education
education@winniplayhouse.org

2024 Subscriptions & Flex Passes

ON SALE NOW!

2024 All Access Pass \$325.00

One ticket to each of the 13 productions/events in the 2024 season (including the special events: *On the Exhale* and *ImprovOlympics*). Additional 10% discount on all other tickets purchased for 2024 productions/events.

2024 Professional Summer Pass \$210.00

One ticket to each of the five (5) professional productions (*Jersey Boys*, *Witch*, *La Cage aux Folles*, *Richard III*, *In the Heights*). Additional 5% discount on all other tickets purchased for 2024 productions/events.

2024 Professional Summer Balcony Pass \$115.00

One ticket to each of the five (5) professional productions (*Jersey Boys*, *Witch*, *La Cage aux Folles*, *Richard III*, *In the Heights*). Seating is limited to the front row of the balcony only. Additional 5% discount on all other tickets purchased for 2024 productions/events.

2024 Flex Pass \$220.00

Five tickets to use however you like. Mix and match performances or productions in any combination.

*The Fine Print:

Passes (and any associated discounts) are not redeemable for rentals or other events produced by a third party. Seats must be reserved in advance and are subject to availability. There are no additional fees associated with redeeming subscription passes. Any unused portion of subscription passes may not be redeemed for cash or credit to your account.

**Stop by the box office or visit www.winnepesaukeeplayhouse.org
to purchase a 2024 subscription**

98.3 Frank ^{fm}™

THE SOUNDTRACK OF THE LAKES REGION!

Join our team

*Hot Mix & Aggregate Sales
Asphalt Recycling & Reclamation
Highway & Site Work Construction*



Find career opportunities at
pikeindustries.com/careers



BRAVO WINNI PLAYHOUSE!

Patrick's
IRISH ROOTS - AMERICAN SPIRIT

patrickspub.com · 603) 293-0841

18 Weirs Rd Gilford, NH



NEW
HAMPTON
SCHOOL

Where Aspiring Artists **TAKE CENTER STAGE**

Whether the arts are a passion or a hobby, there are ample opportunities for professional-level learning at New Hampton School. From the stage to the recording studio, at the ceramics wheel or in the animation lab, our students create in every corner of campus.

www.newhampton.org



The Winnepesaukee Playhouse Presents
the Winni Players Community Theatre in

The Sherlock Mystery Radio Hour: A Live Radio Drama

Based on “The Case of the Haunted Chateau” and “The Case of the Iron Box”
by Sir Arthur Conan Doyle

The Production Team

Directors.....Sam Ducharme and Debbi Finkelstein
Stage Manager.....Emily Close
Lighting Technician.....Amanda Dickinson
Sound Designer.....Sam Ducharme
Sound Technician.....Timothy L’Ecuyer

The Cast

Sherlock Holmes.....William Johnston
Dr. John Watson.....Hazel Heywood
Bill Forman.....Heather Williams
Vicomte De Verlon, Wife, Foley Artist.....Kelly Bennett
Walter, Gaston.....Brendan Berube
Angus.....Raymond Chambers
Sandy, Foley Artist.....Robin Dorff
Murdoch, Susie.....Nicole Gauvreau
Ian, Thomas, Station Master.....Lore Heywood
Herbert.....Mary Morehouse Rogers
Dorothy, Mrs. Gibson.....Jennifer Simon
Porter, Foley Artist.....Mary White

There will be one 15-minute intermission.

The production team dedicates this performance to
Steven Bennett.

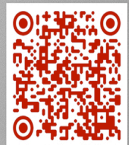
theatre **KAPOW**



On the
Exhale
by Martín Zimmerman



When tragedy strikes,
take a breath
and *get a grip*



Presented by arrangement with Concord Theatricals on behalf of Samuel French, Inc. www.concordtheatricals.com

March 1 and 2 at 7:30pm
March 3 at 2:00pm

the
WINNIPESAUKEE
playhouse

www.tKAPOW.com

A Note from the Director

“The stage is set, the curtain rises, we are ready to begin.”
--Sherlock Holmes

I love a good mystery, I always have. From classic whodunits from the likes of Agatha Christie and, of course, Sir Arthur Conan Doyle, to more modern takes from Stephen King and Truman Capote, the process of eliminating the impossible and finding whatever improbable remaining truth has always been very appealing to me, like putting in the last piece of a nearly-complete jigsaw puzzle.

After several radio play acting credits under my belt here at the Winnepesaukee Playhouse over the past few years, this time around I was ready for a new challenge, and as I write this director's note in anticipation of opening night, I certainly believe I found what I was looking for. Sharing the director's chair with another creative mind was a really fun and exciting process, and collaborating with Debbi to help breathe life into our shared vision of what this show could be has been a wonderful experience.

How fortunate we were to find a group of actors--some new blood mixed in with old familiar faces--that from the very first read-through, left me with a huge smile on my face because I knew we had the makings of a fantastic show on our hands. With this production you're about to watch and enjoy, we were presented with a unique challenge from the get-go: how do you take iconic characters and breathe new life into them in a way that is entertaining and original, while remaining true to the heart of those characters? I'm confident that we solved this mystery, but I will leave the final judgment to you.

Thank you for allowing me the opportunity to share with you my directorial debut here at the Winnepesaukee Playhouse, and for your continued support of these wonderful community theatre productions. Now, sit back, relax, but be prepared--the game is afoot!

--Sam Ducharme

A Note from the Director

As a theater kid I bucked convention and had a dinner theater murder mystery at my Bat Mitzvah, rather than the traditional dance party expected by my peers. In case you're wondering, 902-uh-oh was the name of the particular performance. Each table at the reception was named for a different detective, and my table was the Sherlock Holmes table. Years later, here I am co-directing two Sherlock Holmes radio shows in what almost feels like a full-circle moment. Twelve year old me would be very impressed.

I started directing shows in college and found that, as much as I come alive on stage, I enjoy the process a lot more than anything else I had done in theatre up to that point. I really enjoy digging into each and every character with actors while putting all the pieces together of what becomes a full-fledged performance. Since moving to NH in 2020, I haven't done very much directing and was thrilled when the opportunity to direct this show presented itself. My first radio show at the Winnepesaukee Playhouse was in 2022 and I was determined to be part of the next one, as I had so much fun working with the wonderful cast assembled by Margaret Lundberg, who has directed many of the radio shows here. As a member of the *Miracle on 34th Street* radio show cast, I met my future co-director, as well as even more fabulous and fun actors.

Together, Sam and I have done our best to continue what Margaret had shown us through her directing. I am thrilled with the cast we have assembled, not just because they are all incredibly talented and come to play, but because they are funny and keep me thoroughly entertained. Our rehearsals have been laugh riots, but also a place of safety, where each of us can be ourselves. As you watch (or listen) to these two Sherlock stories, I hope you find the humor and the heart that this cast has brought to each of their characters. I am so proud of all that we have accomplished together and I am honored to be able to share that with all of you. So sit back, relax, and enjoy the show!

--Debbi Finkelstein

From The Winnepesaukee Playhouse Education Department...

With his brilliant mind and keen powers of deduction, Sherlock Holmes has fascinated and entertained readers for well over a century. He first appeared in *A Study in Scarlet*, written by Conan Doyle in 1887, and now continues to star in a wide array of adaptations from film and television to comics and music. The detective's influence extends beyond literature, shaping the world of forensic science and becoming a cultural touchstone synonymous with deductive reasoning. The theatrical journey of Sherlock Holmes began in 1899 with the first known stage adaptation, *Sherlock Holmes*, debuting at the Star Theatre in Buffalo, New York. Since then, the detective has been brought to life by numerous actors, each contributing a unique flavor to the iconic character. The allure of Holmes's deductive prowess and, perhaps most importantly, the chemistry between Holmes and his faithful companion, Dr. John H. Watson, are in large part what continues to drive audiences to seek out Sherlock in whatever medium they can find him. The Sherlock radio plays are one of his most popular formats, and we are excited to be able to offer those to you once again tonight. Enjoy watching (and listening) to the legend himself; good luck seeing if you can beat him to the punch!

--Cory Lawson

Director of Education and Community Engagement

Sherlock Facts!

1. Sherlock was first called Sherrinford

Originally, Sir Arthur Conan Doyle named the sleuth Sherrinford but changed his mind – perhaps because there were well-known Nottingham cricketers called Sherwin and Shacklock, and the author was a big fan of the sport.

2. John Watson was nearly called Ormand Stacker

There are notes in the Museum of London that suggest both characters might have had very different names.

3. Holmes was inspired by a teacher

Conan Doyle was so impressed by Dr Joseph Bell, a lecturer at the University of Edinburgh, who could diagnose patients on sight, that he based Sherlock's skills of perception on him.

4. A Study in Scarlet wasn't popular

His first adventure was rejected by several publishers and printed in Beeton's Christmas Annual, which was not a success.

5. Sherlock Holmes is the most popular film character

...or at least, the most popular human character! He's been in 226 films while Dracula has been in 239!

6. And he's been on film for more than 100 years

With the first silent version – Sherlock Holmes Baffled – made in 1900.

7. Sherlock never says 'Elementary, my dear Watson'

It feels like everything we know is a lie! While the detective says 'elementary' and 'my dear Watson' several times, he never puts the two together.

8. Mycroft Holmes is only in two stories

Although he's often given a bigger role in TV shows and films, Sherlock's brother Mycroft actually only appears in *The Greek Interpreter* and *The Bruce-Partington Plans*.

9. Queen Victoria was a Sherlock fan

In the story *The Bruce-Partington Plans*, Sherlock is invited to Windsor to meet Queen Victoria in recognition of his services, and is presented with an emerald tiepin.

10. Conan Doyle tried to kill Sherlock Holmes because he was bored

After two years of writing the popular stories, the author was sick of the detective, and complained 'it takes my mind from other things'.

11. Watson and Holmes win at chess

In the 1969 Oxford-Cambridge chess match, Oxford players called Watson and Holmes both won their games.

12. The Sherlock Holmes Museum isn't at 221b Baker Street

It's actually at number 239. The Audacity!

13. Sherlock's IQ is 190

Or at least that's what a man called John Radford estimates in his book *The Intelligence of Sherlock Holmes and other Three-Pipe Problems*. The average is between 100 and 110, while Einstein's was 160.

14. Sherlock Holmes is an Honorary Fellow of the Royal Society of Chemistry

Yes, despite being a fictional character, the RSC offered him a fellowship in 2002, and presented his award to Dr John Watson (a real man who is also a fellow!) in front of the statue of Holmes outside Baker Street station.

15. The Speckled Band is the most popular Sherlock Holmes story

Not only was it Conan Doyle's favorite, but it frequently tops reader polls.

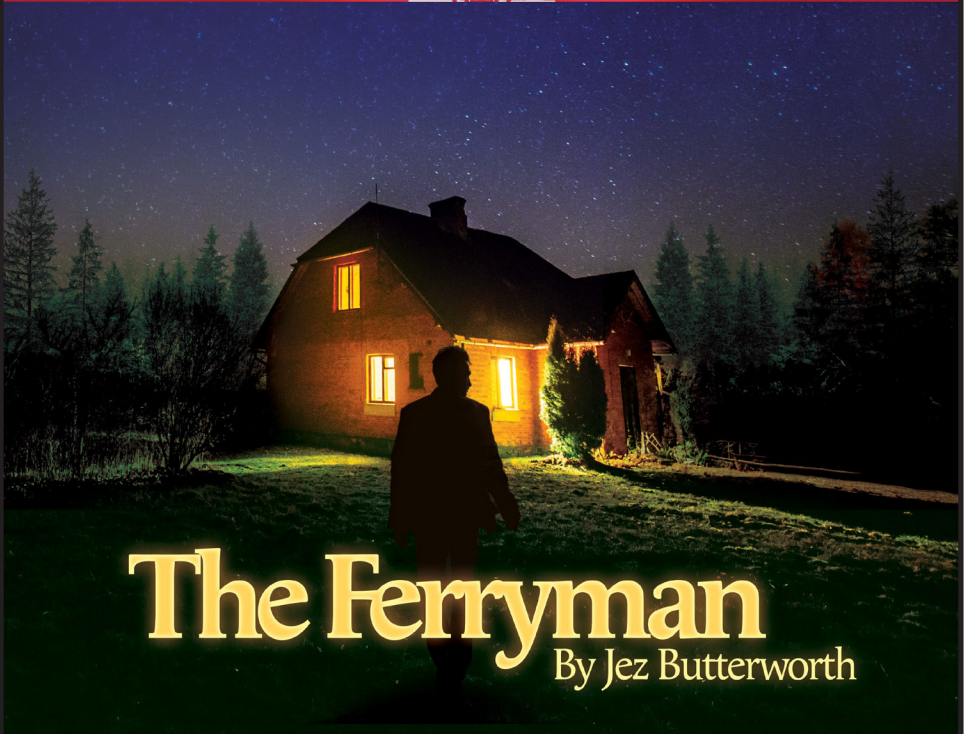
White, Lorna. "Interesting Facts about Sherlock Holmes." *Yours*, 22 Mar. 2022, www.yours.co.uk/leisure/celebrity-tv/15-facts-about-sherlock-holmes/.

**THE Winni
PLAYERS**

Community Theatre at

**the
WINNIPESAUKEE
playhouse**

2024 SEASON



The Ferryman

By Jez Butterworth

APRIL 25-28

SPONSOR:

Supporting the Arts
LAURA & GARY STEPHAN
In loving memory
Dorothy Marie Schrader
Gerald Lewis Schrader

WINNIPESAUKEEPLAYHOUSE.ORG

603.279.0333

33 Footlight Circle, Meredith NH 03253



A FULL SERVICE LAW FIRM

Estate Planning and Probate
Business & Non-Profit
Real Estate
Employment & Labor
Municipal

Land Use & Development
Telecommunications
Litigation
Environmental
Utility

COUNSELING INDIVIDUALS, BUSINESSES,
ORGANIZATIONS AND MUNICIPALITIES
THROUGHOUT NEW HAMPSHIRE

DONAHUE, TUCKER & CIANDELLA, PLLC

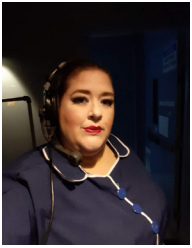
**PROUDLY SUPPORTING THE ARTS
FOR OVER 30 YEARS**

OFFICES IN MEREDITH, CONCORD, PORTSMOUTH, & EXETER, NH

WWW.DTCLAWYERS.COM

1-800-566-0506

The Cast



Kelly Bennett (Vicomte De Verlon, Wife, Foley Artist) is pleased to be returning to the Winnepesaukee Playhouse for the 2024 radio drama. This production marks the 5th performance she has worked on at the Playhouse and the 4th radio play she has been in. She is dedicating her performance to her father Steven who passed away this February.

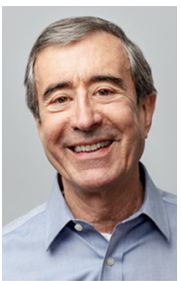


Brendan Berube (Walter, Gaston) is returning to the Playhouse stage for the fourth time, having previously appeared as Henry Saunders in *Lend Me a Tenor*, the Constable in *Fiddler on the Roof*, and as multiple characters in last year's radio show, *Miracle on 34th Street*. He also proudly serves on the Winni Players Committee, as well as the Board of Directors for The Streetcar Company in Laconia, and has appeared in numerous productions for Streetcar, the Powerhouse Theatre Collaborative, and the Pittsfield Players. When not on stage, you'll find him dotting i's and crossing t's (literally) as Managing Editor of The Meredith

News and other weekly newspapers published locally by Salmon Press.



Dr. Raymond ("Ray") Chambers (Angus) is a recent arrival from Georgia. Previously he had a lead in *Everybody Loves Opal* and choreographed *South Pacific* for a small community theatre. He developed his appreciation for live theatre while living in England.



Robin Dorff (Sandy, Foley Artist) is grateful to be making his first appearance with the Winni Players along with his very first-ever stint as a foley actor. Local credits include roles with ETC in *Gypsy* (Pop, Announcer, Phil), *Guys and Dolls* (Gangster), and *Annie* (FDR and Bundles) and with Interlakes' Summer Theatre productions of *Fiddler on the Roof* (Nachem) and *Ragtime* (Henry Ford). Regional credits include: *Hamlet* (Polonius), *Spelling Bee* (Panch), *Peter Pan* (Smee), *Beauty and the Beast* (Maurice), *Fantasticks* (Bellomy), *1776* (Lee and Hancock), *Shenandoah* (Rev. Byrd), and the title role in *Mister Roberts*.



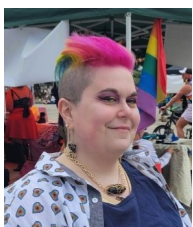
Nicole Gauvreau (Murdoch, Susie) is delighted to be back with the Winni Players after appearing in *Fiddler on the Roof* in 2023. They developed an early love of Golden Age radio dramas through WAMU's The Big Broadcast, so trying out for a radio play using 1940s scripts was a no brainer. Nicole is the Youth Services Librarian at Pease Public Library in Plymouth, and can be found doing funny voices for storytime and library D&D campaigns. Outside of work and performing, Nicole enjoys ballet (dancing and watching), watching operas, sewing, and baking.

The Cast



Hazel Heywood (Dr. John Watson) is ecstatic to not only be on stage for his second radio play, but to cross Watson off his acting bucket list! When he's not participating in the monthly play reading group or public holiday readings (come join us!!!), or serving on the Winni Players Committee, Hazel is an artist of many mediums as part of the NH LGBTQ+ art group Queerlective. He would like to thank his spouse Lore for all their support during a very busy start to the new year, his supervisor Sue for letting him leave early for auditions, and

everyone in the cast for their indomitable spirit and amazing senses of humor. Here's to the chaos Muppets!



Lore Heywood (Ian, Thomas, Station Master) is thrilled to be back in the cast for this year's Radio Play. Other past loved roles with the Winni Players have been Foley and Gina in *Miracle on 34th Street*, Annabella in *Hitchcock Radio Hour*, Evie O'Hanlon in *Yes, Virginia There is a Santa Claus*, multiple roles in *Lost World/ Journey to the Center of the Earth*, Nancy in *M*A*S*H**, and a gaggle of Newsboys. Beyond the Playhouse, they've had the honor of performing in the Powerhouse Theatre Garden Festival. They'd like to thank their wonderful husband Hazel for being the most

supportive and talented spouse. The entire cast and crew have been a joy to work with and made every rehearsal more fun than should be allowed! Finally, thank you for coming to our show. The audience breathes life into live performances. Without you, none of this would be possible.



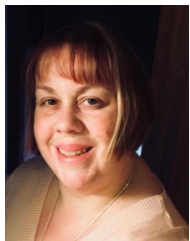
William Johnston (Sherlock Holmes) is thrilled to be joining the Winnepesaukee Playhouse for his first performance with the company. William has been previously seen at Barnstormers Theater as Dr. Graham in *Black Coffee* and as Valentine in Castle Hill production of *Arcadia* at the Crane Estate in Ipswich. Will recently portrayed Dr. John Collins Warren in Intramersive's live and immersive show *Sinew and Soul* at the House of Seven Gables. Will is a semi-professional actor from Sandwich, NH who enjoys making ice cream and cheese at his family's creamery and traveling with his wife.



Mary Morehouse Rogers (Herbert) is excited to return for the 6th time since joining the Winni Players in 2020. She appeared in *Sorry Wrong Number*, *The Hitchhiker*, *Yes Virginia*, *There is a Santa Claus*, *Vintage Hitchcock*, and *Miracle on 34th Street*. The incredible cast and crew has continued to be supportive each and every time! She is sincerely grateful to Debbi and Sam for their wonderful directing and patience! Off stage, Mary and her husband, Dave, live in Hillsborough, NH. She is a Realtor with Berkshire Hathaway Verani Realty in Concord, NH. Mary is

grateful for the love and support of family and friends--especially her husband Dave for agreeing to join her in this experience that started on a crazy whim in 2020! She hopes you enjoy the show as much as the Players did rehearsing for it (sometimes too much fun!)

The Cast



Jennifer Simon (Dorothy, Mrs. Gibson) is ecstatic to be back behind the radio mic after playing Susie in *Miracle on 34th Street*. She has worked with the Winnepesaukee Playhouse in various capacities since she was cast as Elizabeth Proctor in the Winni Players inaugural production, *The Crucible*. Jennifer has been a director, stage manager, and teacher in the Education and Community branches and is currently a part of the Front of House staff. Other venues she has worked with include: North Shore Music Theatre, Shakespeare & Company, Walnut Hill School, Peacock Players, Stagecoach Productions, Meadowbrook (Bank NH Pavilion), and The Hampton Playhouse. Some favorite projects include; *Joseph... Technicolor Dreamcoat*, *Picasso at the Lapin Agile*, *Proof*, *Honk! The Musical*, *Peter Pan* with Kathy Rigby, *Chekhov One-Acts*, and *Altar Boyz*. Jennifer also sits on the Executive Board to the NH affiliate of the National Education Association where she works for the betterment of Education Support Professionals.



Mary White (Porter, Foley Artist) is excited to debut in her first show at the Winnepesaukee Playhouse as a foley artist. Since she was a child she has been active in the arts: taking voice lessons and singing in chorus. Currently she is a cantor at St. Charles Borromeo in Meredith. On the side she has also done voice acting online. She has also used a lot of these skills in addition to writing for her own project *Before The Whispers*, a podcast series set to air this summer. Mary currently lives with her siblings and parents in Campton and has a fluffy white cat named Snowball.



Heather Williams (Bill Forman) is thrilled to be joining the company of *The Sherlock Mystery Radio Hour* for her first production at the Winnepesaukee Playhouse, and the first stage play in which she has participated since moving to NH at the end of 2019. Much of Heather's stage experience took place in her home state of Texas where a few of her favorite roles included: Anna Petrovna in *Wild Honey*, Joyce in *Body Awareness*, Penelope in *The Odyssey*, Helena in *A Midsummer Night's Dream*, and Mrs. Thistlewat in *Avenue Q*. In her free time, Heather loves White Mountain hiking, local bookstore browsing, and farmers market strolling in all of NH's stunning seasons.

The Production Team

Emily Close (Stage Manager) By day Emily is a mild mannered receptionist at your local doctors office, but by night she transforms into a cue calling, prop setting, organizing super hero! This is Emily's first time working with the Winnepesaukee Playhouse.

Sam Ducharme (Director and Sound Designer) is very excited for his (co-)directorial debut at the Winnepesaukee Playhouse! After performing onstage for over twenty years, some favorite past roles include Enjolras in *Les Miserables*, Reverend Hale in *The Crucible*, Herr Schultz in *Cabaret*, and James O'Hanlon in *Yes Virginia, There is a Santa Claus*, and Fred Gailey in *Miracle on 34th Street*. Offstage, Sam can be found working in his local elementary school library, camping and hiking throughout the state of New Hampshire, and testing out new tabletop roleplaying games with friends. Sam would like to thank his friends and family for their ongoing support of his creative endeavors.

Debbi Finkelstein (Director) was in the last two radio shows and is thrilled to be directing her first show (and hopefully not her last) at the Winnepesaukee Playhouse. Debbi has been directing for over 20 years, most notably with The Gazebo Players of Medfield and Natick Drama Workshop in Massachusetts. As much as she likes being on stage, she is much more comfortable in a director's chair and is honored to have shared that chair with Sam for this production (although not literally). Debbi wants to thank the entire cast and crew for making this such a fun experience for her!



THE WINNIPESAUKEE PLAYHOUSE EDUCATION DEPARTMENT

THEATRE CAMP

FOR AGES 5-14

Summer 2024 is...
A Trip Through Time

Join us for an unforgettable summer!

Embark on an extraordinary adventure through the ages with the Winnepesaukee Playhouse's 2024 Summer Theatre Camp - "Summer 2024: A Trip Through Time"! Get ready for a time-traveling extravaganza where creativity knows no bounds. From the roaring dinosaurs of the Jurassic to the groovy vibes of the 60s, join us for a summer filled with laughter, collaboration, and the magic of staging original stories that celebrate the whimsical and the extraordinary--through time!

 <p>JURASSIC JAUNT (July 1 - 5)</p>	 <p>MEDIEVAL MISHAPS (July 8 - 12)</p>	 <p>RIDICULOUS RENAISSANCE (July 15 - 19)</p>	 <p>SENSATIONAL SWASHBUCKLERS (July 22 - 26)</p>	 <p>60s GROOVY GETAWAY (July 29 - August 2)</p>	 <p>EPIC 80s ESCAPADES (August 5 - 9)</p>
--	--	---	--	---	---

REGISTER ONLINE TODAY

Visit us at winnepesaukeeplayhouse.org/education or Scan this Code!
Questions? education@winniplayhouse.org / 603-279-0333



Permanent Staff

Thom Beaulieu (Managing Director/Sound Designer) is pleased to be a part of the staff at the Playhouse. An award-winning lighting and sound designer, Thom holds a BFA in Drama from Carnegie Mellon University's School of Drama, as well as an MS in Physics from Georgia State University. He enjoys golf, boating, and poker, and lives in New Hampton with his wife Meredith and daughter Molly.

Amanda Dickinson (Production Manager) holds a Bachelor of Science in Speech and Hearing from Elmira College and a Master of Science in Speech-Language Pathology from The MGH Institute of Health Professions, and has been a practicing medical Speech-Language Pathologist for 18 years. She first came to the Playhouse in 2017 as a community theatre actor, and has gone on to work in technical theatre across all three divisions of the organization. Amanda joined the permanent Playhouse staff as Production Manager in 2023.

Donna Findlay (Bookkeeper) joined the Playhouse in 2015 after retiring from a 21 year career at a public utility in Manchester, NH and spending 5 years as a para-educator in the Inter-Lakes School District here in Meredith. She gives unending love and gratitude to Jim, Cortland, John, and grandson Jimmy.

Matthew Hutchens (Technical Director) started at the Winnepesaukee Playhouse originally as a carpenter for 2021 season. He has stuck with us since then as the assistant technical director for 2022 and became the technical director in 2023. Matthew's goals as the technical director are to teach others while also creating beautiful sets for the stage.

YOUR AD HERE!

Would you like to be a sponsor or program advertiser for our 2024 season? Contact info@winniplayhouse.org for more information!



NORTHEAST MILL SERVICES LLC

Providing quality lumber manufacturing support since 1985.

Plymouth, New Hampshire • 603-536-5730

info@nmsvc.com

Permanent Staff

Cory Lawson (*Mr. Burns Director*/Director of Education and Community Engagement) is a professional actor, director, and theatre educator. He is currently working on his dissertation for his Ph.D. in Interdisciplinary Fine Arts at Texas Tech University, where his research is in theatre festivals and devised works. He has devised and performed in several shows with the Dutch theatre company Orkater, both in Amsterdam and New York City. Cory has also created work with The Living Theatre and helped to found Ready Set Go Theatre, which created the world's first Shakespeare Webisodes. In 2021, he was named National Artist of the Year at the St Louis Fringe. As an actor and director, Cory's work has been seen professionally in New York, in regional theatres across the country, and on-screen in various television episodes and commercials. Cory holds his MFA in acting from The New School for Drama and a BA in Theatre: Performance and Dramaturgy from Roanoke College. He has served as the Associate Director of Education and Outreach at the Alabama Shakespeare Festival, the Artistic Director of The Burktech Players (a neurodiverse theatre company in Lubbock, Texas), and the Director of The Wallace Weekend Players in Levelland, Texas. Most recently, Cory co-founded and served as the Artistic Director of The Outside In Festival, a new nonprofit Theatre Festival showcasing devised works through the fostering and presentation of both national and international artists.

Timothy L'Ecuyer [he/him/his] (Artistic Director) is a theatre director and teaching artist with an interest in work that sits at the intersection of things: the collision of the classical and the contemporary, the mundane and the eternal, the academic and the immediate. He has been the Artistic Director of the Winnepesaukee Playhouse since 2023 and previously served as Director of Education since 2014. His directing credits at the Playhouse include *The 39 Steps*, *Red*, *Grace and Glorie*, *A Midsummer Night's Dream*, *The Rocky Horror Show*, *Mary's Wedding*, *California Suite*, *The Complete Works of William Shakespeare (abridged) [revised]*, *Shout! The Mod Musical*, *Sweeney Todd*, and fourteen productions with the Education Department. Mr. L'Ecuyer has BAs in theatre and English from Keene State College as well as an MA and MFA in theatre education and applied theatre from Emerson College. He is a former president of the New Hampshire Educational Theatre Guild, an Equity stage manager, and a Teaching Lecturer in the Music, Theatre and Dance Department at Plymouth State University, where he teaches arts management, acting, and dramatic literature. Directing at PSU: *Our Town*, *An Enemy of the People*, *The Curious Incident of the Dog in the Night-Time*, and *Urinetown*. He has worked with many New Hampshire and Boston area theatres including American Stage Festival, Barnstormers, theatre KAPOW, Peacock Players, StageCoach Productions, Greater Boston Stage Company, the Nora Theatre Company, and Underground Railway Theater. timothylecuyer.com

Lesley Pankhurst (Patron and Company Services Director) is one of the founders of the Winnepesaukee Playhouse. Lesley is a graduate of Wellesley College with an MA in Arts Administration and Cultural Policy from Goldsmiths College, University of London. In addition to serving as the Marketing Director of the Playhouse for its first 13 years, she has also designed costumes for many of its productions and has twice been the recipient of the NH Theatre Award for Best Professional Costume Design for *Two Rooms* (2007) and *The Glass Menagerie* (2008). She is the proud mom to her daughter, Sophie, cat Sasha, and wife to the proudly retired Neil.

Thanks

*Thank you for recognizing that art matters.
It takes everyone working together to continue to create great theatre.*

Directors' Circle

\$25,000+

Anonymous
Anonymous
Anonymous
Paul and Sharon Steinwachs

\$10,000+

The Baker Family
Beth and Rich Compson
NH Charitable Foundation

\$5,000+

Richard and Carol Gerken
Laura and Gary Stephan

\$2,500+

Gloria and Irving Fox
Ellie Gordon
John & Muff Walker

\$1,000+

Anonymous
Ray and Karen Abramson
Marc and Carol Bard
Cyrus Bowditch
Mike and Lisa Brien
Jim and Leslie Chapman
Judy Cookman
Ray Craigie and Pam Smarling
James and Bonnie Doherty
The Findlay Family
Chuck and Diane Fray
Liz and Bob Gabel
Julie Hirshan Hart and Jeremy Hart
James Whittredge Hill
Jennifer and Randy Hobbs
Paul and Beverly Jaques
Jason and Izzy McKinney
Susan and Douglas McLane
Sharon and Tom Messmore
Debra Nash
Kate O'Brien
Neil and Lesley Pankhurst
Barbara Pitsch
John and Cleo Robbins
Jason and Deanne Sargent
Carolyn S Scattergood
Ambassador Paul Speltz and
Renee Speltz
Anita E. Springer
Graham and Julia Thomson
Barbara Zeckhausen

to YOU!

Actors' Circle

\$500+

Anonymous
Michael Ames/Half Moon Enterprises, Inc
Bank of New Hampshire
The Denny Knight Family Fund of the Princeton Area Community Foundation
Kelly Dunn
Laura & Rodney Felgate & Gail Barrett
John and Carol Ford
Don and Lou Ann Harris
Susanna High
David and Patricia Immen
Elizabeth Immen
John and Janice Lynch
Joan and David Martin
Louise and Sandy McGinnes
Mark and Susan Primeau
Robert and Margie Sallies
Patricia P Schlesinger
Gil Schohan
Judy and Steve Siegel
John Stenbit
Bruce and Betsy Thomas
Deborah & Paul Walker
Wayfarers Investment Club
Barbara and Gordon Webb
Pamela Winkler
Mr. & Mrs. Brian Winslow
John and Karen Yeigh

\$250+

Anonymous
Anonymous
Janet Baurle
Tony and Terri Bouchard
John Browne
Sarah Bunkley and Richard Smith
James Burke
Bob & Elaine Carangelo
Ken Chapman and

Carol Lowden
Abraham and Lynn T. Dadian
Annie Donahue
Carol and Robert Doretti
Graham Edmondson
David and Claudia Ferber
Kendra and Paul Ferreira
Carolyn & Ken Filpula
Debbie Frawley Drake
Lisa Furlong
Jamie Gegerson
Robert and Eileen Gosselin
Katie Guilmett
Joseph Kelaghan
Kelly Kinhan
Katherine Kinnicutt Family Foundation
Constance Kuekan
Charlotte Lee and Ron Turbayne
Brad and Lynn Leighton
Deborah Leonard Kosits
Lisa Lovett
William and Stefanie Marsh
Alan and Carol Metevia
Jeff and Bobby Morgenstern
In Memory of Jason and Harriett Morse
Kaitlin O'Neil
Diane and Tom Orlovski
Charlotte Otto
Rosemary Pizzuti
Gail Putnam
Kristin Snow
Edward Sonn and Sharon Forde
David Stamps and Judith Buswell
The Truesdale Family
Mark and Kathleen Whitehead
Christian and Debra Zimmermann

\$100+

Anonymous

Anonymous
Anonymous
Anonymous
Miriam Adams
Dalia Aleman
Amazon Smile Foundation
Christine and Carlos Anderson
Cecile Andrews
Delaney Andrews
Rick and Rae Andrews
William Bald
Gail Barrett
Chuck and Sue Bates
George Berman
Craig Betchart
Frank & Nancy Betchart
Peter Bixby
Allison Borowy
Steve and Judy Brown
John Browne
Jay Buckley
Patrick J. Buckley
Michelle Carrier-Trial and Rene Trial
Alison and Christopher Casco
Drs Paula and Ray Chambers
Mark Chiffer
Stephanie Collins
Matthew Croak
Alexa Dembiec
Robert and Patricia DeNoble
Diane G. Dion
Martha Dolben
James Downey
Denise Doyle
Dr Noe
Kim Duncan
Mark G. Edelstein
The Elliotts
Ms. Cornelia Eschborn
Georgene Fabian
Andrew Fleischmann
Gregory Flowers

Actors' Circle (continued)

Michael and Ellen Giguere	Patte and Steve Sarausky	Rebecca Fahey
Lynn Goddard	Robert Sawyer	Daniel and Gail Flannery
Lois Grant	Dennis and	Alexis Furlong
Jean Halfmann	Kerry Schneider	Wayne and Shirley Gould
J William Harris	Melissa Shakun	Megan Greenstein
Deb Hastings and	Jack and Doreen Sheppard	Rebecca Gregoire
Fred Wernig	Chris Slater	Dean Gulezian
Steve Jenkins	Thomas Staley	Kevin Hall
Gary D Jesseman	Mr. and Mrs. Fred Strader	Nancy Henn
Mark Johnson and	Monica and Paul Sullivan	Andrea Houghton
Donna Tasso-Johnson	Pam and Larry Tarica	Janet Keefe
Christine and Paul Jolie	Margaret Turner	Christopher Kiley
Susan Karsten	Joyce Tyler	Carolyn Kobsa
Pat Kelly	William Vanca	Eliza J Leadbeater
Ira and Lynn Keltz	Deborah Vargo	Jonathan and Glenna Lee
Martin and	James Wavle	Nancy and Newbold LeRoy
Brenda Killourie	Lindsay Weiner	In Memory of
Bernice and Bernie Kramer		John Morgenstern, from
Nancy Kubecka	\$50+	Rob Lubin and Kent Brown
Maureen Kuharic	Anonymous	Charlene Malek
Peter and Linda L'Ecuyer	Donna Acox	Alexandra Manoloff
Marc and Carroll Levey	Marcy Alkalay	Jessie Marden
Peter and Maryann Magoun	Kay Anderson	T. J. McCabe, Jr
Dr. Warren &	Sol and Catherine Asmar	Joel Mercier
Annette Mason	William Batchelder	Sheila Michalke
William McArthur	Richard and	Monica Michalsky
Robert and Donna McCoy	Rosalie Beaulieu	& Tom Stankosky
Mary and James Michener	Andy Bedford	Gerard and Joanne Morin
Greg & Regis Miller	Benevity Community	Linda Morse
In Memory of	Impact Fund	Savannah Muzzey
John Morgenstern	Barbara and	New Hampshire Center
Melissa Gabel Morse	Charles Birdsey	for Nonprofits
Paul Mrocza	Irene and John Bonner	Jeffery & Jayne Peck
Sean and Helen Murphy	Matt, Carey,	Scott Piddington
Debra and Timothy Naro	and Emma Cahoon	Andrew Pinard
Margaret and Stephen Ober	Suzanne Caroselli	Glen Potter
Deborah Osborne	The Cottages of Wolfeboro	Alan Provance
A Parnes	Jo Ann Clark	Charlene Puzzo
Daniel Patterson	Judith Clayman	Lynne Rainen
Rosemary and Clive Perry	Cynthia and Harvey Creem	Marta Rainer
Clayton Phillips	Emily Dahl	Tracy and Mark Renaud
John and Dorothy Piquado	Cara David	Rebecca Rigden
Walter and	Hannah Davidson	Sebastian Ryder
Christine Powers	David and Sylvia Detscher	Elizabeth Sallies
The Pundits of Yale	Thomas Dixon	Robert Sears
Mike and Sarah	and Annmarie Karayianes	Sally Sibulkin
Catherine Richardson	Melissa and Doane	Cheryl Stocks
Sharon Richardson	Dorchester	Sara Tirrell
The Rickenbachs	Robin Dorff	Rafael Vazquez
Mary and Dave Rogers	Drapcho Family	Randy and Terrie Verzillo
Joe Sampson	Linda Enderwick	Lu Ann Walsh
Carole Sands	Miriam Erick	Richard Williams

All Other Gifts

Anonymous
Anonymous
Tracy Aber
Elizabeth Ahl
Sharon Aronovitch
Eileen Bates-Bordies
Karen and Paul Bemis
Joan Besing
Bert Bosse
Roberta Brayer
Karen Brickman
Russell Brummer
Elizabeth Bulasko
Kevin and Mary
Ellen Canty
Janice Cardarelli
Melody Carter
Alyse Castonguay
Bill Charles
Vickie Chase
Tyler Christie
Paul Ciborowski
Patti Cohen Hecht
Bob and Lynn Crosby
Timothy Cullen
Michael Daebler
Alexander Davis
Beth Day
Judith Dean
Susan Denoncourt
A. Robert Dionne
Maryann Dodge
Sarah Duffley
Richard Duke
Clark Dumont
Kerri Dutile
Jean Etter
Melanie Flanagan

Mark and Linne Fraser
Darlene Fritz
Christina Fuller
Frank Garcia
Virginia Gassman
Amy Grimm
Jennifer A Grunbeck
Nancy Hall
Madeline Hanafin
Hannaford Community
Bag Program
Jennifer Hanson
Janis Hardiman
Ann Hebert
Andrew Hendrick
Susan Henkel
Hazel Heywood
Alison Hildebrand
Joia Hughes
Amanda Jennison-Sousa
JM
Karen Kharitonov
Valerie and Karl Kimball
Kathryn Kittredge
Pamela Klingler
Kathy Lacey
Charles Lambert
John & Nancy Law
Cory Lawson
Lynn Lawson
Nathalie Leclair
Michelle Levinson
Denise Livingstone
Thad Long
Cassandra Lovering
Heidi Luscher
Mark Macdonald
Debra Macone
Cassandra Mason

Jennifer Mastergeorge
Marcia McCaffrey
Deirdre A Meehan
Donald R Meeken
Daniel Moody
Paul Nelson
Junette Pearson
Penny and Paul
Normand Pinette
Catherine M Pitari
Karen Plummer
Michael Portrie
Veronica Rosa
Janine M. Schifino
Linda Schocken
Jennifer Simon
Angela Smith
Lori Smock-Joyal
Dana and Andy Snyder
Susan Swain
Jennifer Szendre
Allison Szklarz
Evelyn Tate
Judy Taylor
Bruce and Pam Thayer
Marie Valliere
Valerie Verge
Patricia Weston
Kim Whitney
Amanda Whitworth
Shelley Wieler
Lowell Williams
Patricia Williams
Alyssa Yolda
Lorna Zammett

*Donation list dated
2/3/23 - 2/2/24*

Morgenstern Sustainers

Anonymous
Anonymous
John and Linda Browne
J.W. Hill, Consultant
Sarah Bunkley and
Richard Smith
Alison and Christopher Casco

Katie Guilmett
Julie Hirshan Hart and
Jeremy Hart
Jennifer and Randy Hobbs
Ira and Lynn Keltz
Susan and Douglas McLane
Kaitlin O'Neil

Joe Sampson
Jason and Deanne Sargent
Mary and Dave Rogers
Graham and Julia Thomsson
John and Muff Walker
Brian Winslow

These are people who participate in the continued success of the Playhouse through their recurring gifts, and we are so grateful for the ongoing support.

We appreciate your support!

Did you know that in typical years ticket sales only account for about 50% of what it takes to run the Winnepesaukee Playhouse?

Sadly, these have not been typical years recently. But patrons just like you have been so supportive and generous. No gift to the Playhouse is too small, and every donation helps us keep artists employed and audiences entertained throughout the year. If you would like to become a donor, or make an additional donation, your tax-deductible gift will be instrumental in helping to ensure the Playhouse can continue to provide the level of programming you have come to expect.

You can make a donation today by visiting the box office, calling us at (603) 279-0333, or visiting our website: www.winnepesaukeeplayhouse.org

Is it time to take your involvement to the next level?

- You could make a one-time gift of \$100
- Join the Morgenstern Sustainers with a monthly gift of \$10
- Join our Directors' Circle at \$1,000 a year (\$85/month)

You can be the one to inspire, engage, and entertain the community by making a tax-deductible gift. You can mail us a check, use your credit card online or over the phone, or stop by the box office today.

There are even more creative ways to support the Winnepesaukee Playhouse!

Have you ever considered including the Winnepesaukee Playhouse in your will? A gift through your will or estate plan enables you to support our mission and make a difference in the future of the Winnepesaukee Playhouse. Did you know you can use your IRA required minimum distribution to make a tax-free donation to a non-profit like the Winnepesaukee Playhouse?

Questions? Speak with your financial advisor, or contact Thom Beaulieu at 603-279-0333 or thom@winniplayhouse.org.

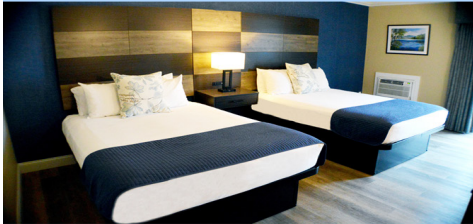


THE MARGATE
ON • WINNIPESAUKEE



LOCATED ON 400 FEET OF PRIVATE SANDY BEACH ON THE SHORES OF LAKE WINNIPESAUKEE

- ⊙ LAKE VIEW & BEACH FRONT ROOMS AVAILABLE
- ⊙ INDOOR & OUTDOOR POOLS
- ⊙ WHIRLPOOL, SAUNA, FITNESS CENTER
- ⊙ BEAUTY SALON & SPA
- ⊙ WEDDING, GROUP EVENT, AND CONFERENCE FACILITIES
- ⊙ FREE WIRELESS INTERNET
- ⊙ ARCADE GAME ROOM
- ⊙ PRIVATE BEACH BAR & 400' SANDY BEACH
- ⊙ MULTI-NIGHT DISCOUNTS AVAILABLE!
- ⊙ ... AND MUCH MORE!



76 LAKE ST, LACONIA, NH ♦ 1-800-MARGATE
WWW.THEMARGATE.COM

THE FITNESS
Edge

BOOT CAMP PLUS | INDOOR CYCLING | TOTAL BODY TONE
BARRE | POSTURE | YOGA | ZUMBA | TRX AND MORE!

169 DANIEL WEBSTER HIGHWAY
MERIDITH NH

78 WHITTIER HIGHWAY
MOULTONBOROUGH NH

OFFERING NH LAKES REGION 2 CONVENIENT HEALTH CLUB LOCATIONS!



(603) 279-0411

WWW.THEFITNESSEDDGENH.COM

Birch Hill
BOOKKEEPING & CONSULTING

James W. Hill
Owner

Mailing Address:
Post Office Box 101
Moultonborough, NH 03254-0101
Cell: 603-476-2521
Fax: 1-877-495-6388

Have Laptop. Will Travel...

email: jim_hill_nh@yahoo.com

Visit us online at www.birchhill.net



JOE WALKER Marketing Services

"Vision without action is a daydream.
Action without vision is a nightmare."

-Japanese Proverb

Does your business have vision?

- Strategic business plan development
- Promotional / advertising plans
- Marketing plans
- Non-profit fundraising plans
- Presentations / guest speaking

JoeWalkerMarketing.com
info@joewalkermarketing.com
603-731-0693

Franchisee
Call 603-369-4376
to advertise.



Specializing in
social media marketing
to help small businesses
grow their online presence



KLWConsulting@outlook.com
klwconsulting.net

CHRISTOPHER P. WILLIAMS ARCHITECTS, PLLC

PO Box 703 • Meredith, NH 03253 • 603-279-6513
www.cpwarchitects.com



Our award winning firm has provided innovative and environmentally sensitive design solutions since 1984. We specialize in sustainable building practices and offer expertise in incorporating green systems into client projects to enhance and protect the ecosystem, and conserve natural resources. We strive to design buildings that fit into their cultural context and environment.



MIRACLE FARMS

LANDSCAPE CONTRACTORS

Moultonborough, New Hampshire (888)288-8252

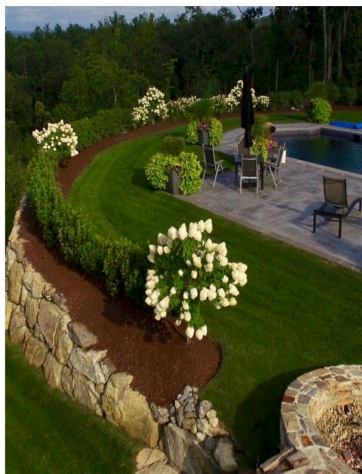


Extraordinary landscapes begin here!

- Landscaping
- Maintenance
- Hardscapes
- Mulch/Loam/Compost
- Firewood Dry/Green

603-253-9292

www.miraclefarmslandscaping.com



The Winnepesaukee Playhouse is grateful to the following foundations for their support.



STEINWACHS FAMILY
FOUNDATION



New Hampshire
State Council on the Arts



NEW HAMPSHIRE
CHARITABLE FOUNDATION

The Winnepesaukee Playhouse is supported in part by a grant from the New Hampshire State Council on the Arts & the National Endowment for the Arts.

Supporting the Arts
LAURA & GARY STEPHAN
In loving memory
 Dorothy Marie Schrader
 Gerald Lewis Schrader



The Laconia Daily Sun
 Online at laconiadailysun.com
 Daily Newsletters • Home Delivery (603)737-2020



1-800-CAMARO-1
 (603) 286-8087

New & Used Parts
 Cars, Trucks, SUVs
 Foreign Domestic Hybrid

Used Cars Bought and Sold
 We Will Pick Your Unwanted
 Vehicle Up!

Chuck Drew - Owner

112 Clark Rd, Tilton, NH 03276 www.camaroheaven.com

**The community we service
 is the community we support.**

We thank our local communities for trusting us to be there when they need us, and are proud to do our part in supporting them.



Reliable Deliveries | Responsive Service

www.deadriver.com



**Winnepesaukee Playhouse
Merchandise
For Sale in our Lobby!**



 **invisalign®**
TouchUp!

Are your teeth out of alignment
and need a Touch-Up?
Need a new set of Retainers?

**Give Dr. Kennell
a Call Today!**

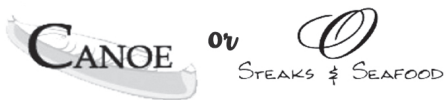


Dr. Alan F. Kennell



KennellOrtho.com | 524-7404 Laconia | 536-7404 Plymouth | 444-7403 Littleton

Before the Play
enjoy dinner at



253-4762
Center Harbor

524-9373
Lakeport

www.magicfoodsrestaurantgroup.com

Prescott  *Farm*
Environmental Education Center



After the play—

we'll help you find ways to play
outside!



928 White Oaks Road, Laconia
603.366.5695 prescottfarm.org

Our Real Estate Goals are simple....

They're Yours!



Scott Knowles

603.455.7751

scottknowles@metrocast.net

Chris Adams

603.393.7993

adamschris195@gmail.com

Chris Kelly

603.677.2182

chriskelly@baysidenh.net



We have everything you need in real estate

208 Daniel Webster Highway, Meredith, NH 03253

(603) 279-0079

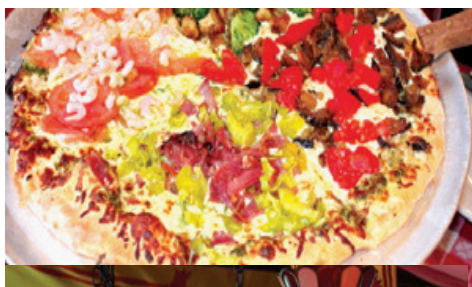
604 Main Street, Laconia, NH 03246

(603) 527-8200

www.baysideplatinumgroup.com



Very Music Very Italian & Very Good!



Celebrating
35 Years!

Giuseppe's *Pizzeria & Ristorante*



**This unique and popular restaurant is
one of the Lakes Region's most loved since 1989!**
Serving Award-Winning Gourmet Pizza, Pasta, Seafood,
Steak, Chicken, Veal, Vegetarian, Vegan, Gluten-Free,
Soup, Salads, Desserts, Cappuccino,
Beer, and a fabulous selection of Wine and Spirits!

Lunch and Dinner Daily
Reservations are highly recommended and greatly appreciated!

Located on the corner of Routes 3 & 25
Mill Falls Marketplace, Meredith, NH

Call (603) 279-3313
For Reservations & Take Out
Visit giuseppesnh.com

LAKES REGION COMPUTER



**Over 27 Years In
Business!**

**Your One Stop Shop for
all things Tech**

IT Business

Services:

Computer Systems and Network
Installations
System Monitoring and
Management
Backup and Disaster Recovery
Security and Compliance
Cloud Solutions
IT Inventory and Planning
On-site and remote Support
Wireless Network Planning and
Installations
Security Cameras
Nextiva Business Phone Systems

Visit Our Retail Store!

Verizon Authorized Retailer
Apple Authorized Service Provider
Apple, PC, and Phone Accessories
iPhone and Computer Repairs



Scan Me!



WHERE TO FIND US?

12 Main St Center Harbor, NH 03226

Phone: 603-253-9847

Online: lakesregioncomputer.com

 @lakesregioncomputer