

the
WINNIPESAUKEE
playhouse

20TH SEASON



CELEBRATION

**MAMMA
MIA!**™

Music and Lyrics by **Benny Andersson and Björn Ulvaeus**
And some songs with **Stig Anderson** | Book by **Catherine Johnson**

JUNE 15-JULY 8

SPONSOR:

Delivering on A promise.™



winnepesaukeeplayhouse.org

603.279.0333 | 33 Footlight Circle, Meredith NH 03253



Meredith Marina

603.279.7921



Scan Me
for
Directions!

BOAT RENTALS & Jet-Ski Rentals



Water-Ski
& Tubing
Packages
Available!

Make A Splash!

One of the largest
BOAT RENTAL FLEETS
on Lake Winnepesaukee!



NEW & USED BOAT SALES

Hunter

tió
ADAPT

Sweetwater

Sanpan

Aqua Patio

Premier
Pontoons

MARINE STORE & BOATING ACCESSORIES

603-279-7921



BOAT SALES • BROKERAGE • VALET • SERVICE • RENTALS • STORAGE

2 Bayshore Drive, Meredith, NH • Meredith Bay • Lake Winnepesaukee



www.meredithmarina.com

Board of Trustees

Renee Speltz
Chair
Retired Mental Health Counselor and
Consultant

Bill Bald
Vice Chair
President
Melcher and Prescott Insurance

Raymond Abramson, CPA
Treasurer
Owner
Abramson & Company, LLC

Kaitlin M. O'Neil
Secretary
Attorney
Normandin, Cheney & O'Neil, PLLC

Members at Large

Eden Unger Bowditch
Author
Plymouth State University

Julie Hirshan Hart
Editor
The Laconia Daily Sun

Lesley Pankhurst
Co-Founder and Patron and
Company Services Director
The Winnepesaukee Playhouse

Sean C. Sullivan, CPA
Business Consultant

Kathleen Sweeney, CPA
Owner
Kathleen Sweeney CPA

Julia Thomson
Legal Consultant

Brian Winslow
Director of Community Relations
Granite VNA

the WINNIPESAUKEE playhouse

Permanent Staff

Artistic Director.....Timothy L'Ecuyer
Managing Director.....Thom Beaulieu
Patron & Company Services Director.....Lesley Pankhurst
Dir. of Education & Community Engagement.....Cory Lawson
Production Manager.....Amanda Dickinson
Technical Director.....Matthew Hutchens
Assistant Technical Director.....RJ Bogues
Bookkeeper.....Donna Findlay

Professional Season Company

Scenic Charge Artist.....Gwen Elise Higgins
Electrics Supervisor.....Libby Hinshaw
Props Supervisor.....Nick Winkler
Scenic Carpenter.....Francisco Fialho
Audio/General Technician.....E. Wilson
Costume Assistant.....Melody Carter
Wardrobe Supervisor.....Natalya Salvati
Camp Administrator.....Becky Gregoire

Proud Members of

NEW HAMPSHIRE

PROFESSIONAL THEATRE

ASSOCIATION

WWW.NHPTA.ORG INFO@NHPTA.ORG

The Winnepesaukee Playhouse
33 Footlight Circle, Meredith NH 03253
Tel. (603) 279-0333

www.winnepesaukeeplayhouse.org

For Your Information

Please turn your cell phone and any other electronic devices completely off. Leaving them on silent or vibrate may interfere with our communication systems and interrupt the flow of the performance.

Please refrain from photography or recordings of any kind, as this violates our royalty agreements.

Please note that if you must, in an emergency, use the restrooms during the performance, our House Manager will return you to your seat at an appropriate break in the performance.

Please be sure you can hear us! For our theatre patrons who have experienced varying degrees of hearing impairment, please take advantage of our state-of-the-art **Assisted Listening System**.

For indoor performances: If you are a hearing aid user who has a tele-coil function in your hearing aid you will be able to access our system directly after turning on that function. You may need to contact your hearing aid provider to inquire about the tele-coil in your particular hearing aid and ensure that it has been activated and instructed on how to turn it on when you are in the theatre. For patrons without tele-coil hearing aids, we have a limited number of headsets available on a first-come, first-served basis. Please see the box office if you would like to use one.

The indoor Assisted Listening System is made possible by a generous donation from The Maurice and Rhoda Miller Endowment Fund.

For outdoor performances: All actors will be amplified. If you'd like further amplification, headsets are available on a first-come, first-served bases from our reception table.

Please keep in touch! Visit our website at www.winnepesaukeeplayhouse.org to join our email list. You can also follow us on Facebook, Instagram, and Twitter.

Dear Friends:



On behalf of Managing Director Thom Beaulieu, myself, and everyone at the Winnepesaukee Playhouse, thank you for joining us for our 20th season! All three departments of the Playhouse—professional, community, and education—have fantastic things planned for 2023 and I am honored to have the privilege of helping to shepherd all of them to the stage in my first season as Artistic Director.

Marking our 20th season is an opportunity for all of us to reflect on the path that brought us here. It would be impossible for me to do so without mentioning the deep gratitude I have for the unflagging effort of my predecessor, Founding Artistic Director Neil Pankhurst. Working with him for the past nine years has prepared me to step up into this position in a way that nothing else could. I am additionally grateful for his continued support and can't wait to welcome him back to write and direct this year's holiday Panto *Cinderella*.

This season revives some Playhouse favorites: American classics, a smash hit ABBA jukebox musical, the poignant story of the friendship between a pig and a spider that many of us grew up loving, and more. It also honors and extends the Playhouse's long-standing tradition of bringing you an exciting variety of work transcending time, geography, and genre. Bringing all of this to life for you are talented teams of theatre artists, some of whose work you already know and love as well as extraordinary professionals, students, and community members sharing their work with us for the first time.

An anniversary like this is also an opportunity to turn our eyes to the future and think about what might be. This year's transitions in leadership, particularly the addition of Amanda Dickinson and Cory Lawson to our staff, have already had invigorating effects. In the coming months and years, we will also shake out the cobwebs by bringing you new programming, new initiatives, and new ways of bringing epic storytelling to our intimate spaces. We will also rededicate ourselves to what works best.

Whether you are a longtime Playhouse supporter or are joining us for the first time, we are thrilled that you have chosen to be part of our community. We are more excited than ever to walk into the future together.

--Timothy L'Ecuyer
Artistic Director

MOULTON FARM

Meredith, N.H.



Farm Market Open Daily

Mid-March Through Dec. 31

DRIVEWAYS • WALKWAYS
PARKING LOTS • ROADS



603-279-1499

www.bryantpaving.com



InnisFREE Bookshop

BOOKS GIFTS CARDS since 1992

www.innisfreebookshop.com

312 DANIEL WEBSTER HIGHWAY MEREDITH, NH 603-279-3905

KATHLEEN E. SWEENEY

CERTIFIED PUBLIC ACCOUNTANT

P.O. Box 1259
Center Harbor, NH 03226
(603) 253-4011
Fax (603) 253-4051

P.O. Box 1187
North Conway, NH 03860
(603) 356-7036
Fax (603) 733-5250

ksweeney@metrocast.net
www.kathleensweeneycpa.com

Thank you for voting us best in the lakes region



Dependable and timely Oil, Diesel and Propane deliveries from Loudon to Lincoln and Alexandria to Alton Full Emergency and Installation services



Heating Oils
Propane
Diesel
24-Hour Emergency Service
Boiler Installations
Preventive Maintenance

Family Owned & Operated Since 1946 • (603) 524-1417 • www.foleyoilco.com

Mello
Moose
COFFEE HOUSE



136 Daniel Webster Hwy, Meredith
(603) 677-7037

Great coffee, breakfast sandwiches, and
fresh baked goods to start your day!

TWIN BARN
BREWING CO

194 Daniel Webster Hwy
Meredith



Bring Ticket Stub To
Twin Barns for 50%
off apps

We are thrilled to support
The Winnipisaukee Playhouse

Temple B'nai Israel
Laconia, NH



Temple B'nai Israel



TBINH.ORG

Prescott Farm
Environmental Education Center



After the play—
we'll help you find ways to play
outside!



928 White Oaks Road, Laconia
603.366.5695 prescottfarm.org

Before the Play
enjoy dinner at



253-4762
Center Harbor

524-9373
Lakeport

www.magicfoodsrestaurantgroup.com

Supporting the Arts
LAURA & GARY STEPHAN

In loving memory
 Dorothy Marie Schrader
 Gerald Lewis Schrader



The Laconia Daily Sun Don't Miss a Day!

Read online at laconiadailysun.com

sign up for daily newsletters • home delivery call (603)737-2020



Lakes Region
FENCE

Proudly Supporting
 The
 Winnepesaukee
 Playhouse

Residential Fencing Specialists
 FULLY INSURED



SINCE 2005

www.LRFence.com

222 Country Club Rd
 Gilford, NH 03249

Call Us for a Free
 Estimate!
 603.524.6061

BRAVO WINNI PLAYHOUSE!



patrickspub.com • 603) 293-0841

18 Weirs Rd Gilford, NH

HART'S
 TURKEY FARM
Restaurant



233 Daniel Webster Hwy
 Meredith, NH 03253
 603-279-6212

hartsturkeyfarm.com

Regular
 Children &
 Mini
 Menus
 Available
 Gift Shop
 Catering

IRWIN
 AUTOMOTIVE GROUP

603-524-4922 | irwinzone.com

Serving New Hampshire Since 1951

59 Bisson Avenue Laconia, NH

446 Union Avenue Laconia, NH



2023 SHOW LISTINGS

SPRING

March 24-26: Charlotte's Web

Adapted by Joseph Robinette, Based on the book by E.B. White

Radiant! Terrific! Some pig!

All your favorite characters from E.B. White's classic children's novel come to life on the stage as Wilbur, a runt of a pig, ends up under the protection of an extraordinary spider, Charlotte. Charlotte saves Wilbur's bacon with the magical words she weaves in the web while teaching him the true meaning of friendship.

Sponsored by:



NEW
HAMPTON
SCHOOL

April 14-16: Twelfth Night

By William Shakespeare

If music be the food of love, play on!

A shipwreck. Separated twins. Mistaken identity. Unrequited love. Lost in an unfamiliar land, quick-witted Viola disguises herself as a man and finds herself in the middle of an explosive love triangle in one of Shakespeare's most beloved romantic comedies.

Sponsored by:



NEW
HAMPTON
SCHOOL

April 27-30: Ken Ludwig's Lend Me a Tenor

A screwball comedy from the master of farce!

When a world-renowned opera star ends up passed out in a hotel room before he is due on stage, a lowly office assistant is persuaded to don his costume and go on in his place. But when our star revives, hilarity ensues. Mix two tenors in two identical costumes with a singing bellhop and a seductive soprano, and you get chaos of operatic proportions.

Sponsored by:



THE *Winni*
PLAYERS

2023 SHOW LISTINGS

PROFESSIONAL SEASON

June 15-July 8: Mamma Mia!

Music and Lyrics by Benny Andersson and Björn Ulvaeus and some songs with Stig Anderson,
Book by Catherine Johnson, Originally Conceived by Judy Crayme

The global smash-hit musical returns to the Playhouse!

Over 60 million people all around the world have fallen in love with the characters, the story, and the music that make **Mamma Mia!** the ultimate feel-good show! A mother. A daughter. Three possible dads. And a trip down the aisle you'll never forget!

Sponsored by:

Delivering on A promise.™



July 12-22: SHOUT! The Mod Musical

Created by Phillip George & David Lowenstein

The music, the fashion, and the freedom of the swinging 60s!

This smashing revue tracks five groovy gals as they come of age during those liberating days that made England swing! Join this fast-paced journey through infectious and soulful pop anthems and ballads like "To Sir With Love," "Downtown," "You Don't Have to Say You Love Me," "Son of A Preacher Man," and "Goldfinger." Groovy, baby!

Sponsored by:



July 27-August 12: Agatha Christie's Murder on the Orient Express

Adapted by Ken Ludwig

All aboard for a trip you'll never forget!

Just after midnight, a snowdrift stops the Orient Express in its tracks. The luxurious train is surprisingly full for the time of the year, but by the morning there is one fewer passenger. An American tycoon lies dead in his compartment, stabbed eight times, his door locked from the inside. Isolated and with a killer in their midst, the passengers rely on detective Hercule Poirot to identify the murderer – in case they decide to strike again.

Sponsored by:



2023 SHOW LISTINGS

PROFESSIONAL SEASON

August 16-26: Driving Miss Daisy

By Alfred Uhry



An open road of possibility

Uhry's portrait of an aging Southern woman and the Black man hired to be her driver. What starts out as indifference and disdain soon turns into a relationship of mutual trust and compatibility as they break down each other's defenses and come to realize that friendship comes in all different packages.

Sponsored by:

LOVERING
Cars you love from people you trust.

VOLVO
Concord Meredith Nashua

98.3 fm
Frank

August 31-September 9: Sweeney Todd, The Demon Barber of Fleet Street

Music and Lyrics by Stephen Sondheim. Book by Hugh Wheeler. From an adaptation by Christopher Bond

A deliciously gruesome musical!

Attend the tale of the vengeful barber and the scheming pie shop owner who have been haunting the stage since the show's legendary Broadway debut in 1979. **Sweeney Todd** is a tale of love, lust, revenge, and murder set amongst the smog of Victorian England. One of the most deliciously inventive scores of all time, it will leave you hungry for more!

September 14-24: The Glass Menagerie

By Tennessee Williams

"In memory, everything seems to happen to music."

One of the enduring classics of the 20th century, **The Glass Menagerie** is a semi-autobiographical play from one of this country's most beloved playwrights. This memory play is a portrait of a young man attempting to understand the difficult mother and delicate sister who tether him to home. A powerful and haunting piece of theatre.

Sponsored by:

THE
FITNESS
Edge
Health Club

2023 SHOW LISTINGS

FALL

October 20-29: Corduroy

Based on the books by Don Freeman, Adapted for the stage by Barry Kornhauser

"I like you the way you are."

When the lights are dimmed and the doors are locked, a department store comes to life. Corduroy, the stuffed bear with the green overalls, must outsmart the Night Watchman as he waits for his human friend, Lisa, to return. With his missing button, Corduroy may not be perfect, but Lisa proves that sometimes all you need is a friend.

November 8-12: Fiddler on the Roof

Book by Joseph Stein, Music by Jerry Bock, Lyrics by Sheldon Harnick

To Life!

One of the most popular musicals of the 20th century, **Fiddler on the Roof** is the Tony Award-winning sensation that introduced the world to favorite songs like "Tradition!", "Sunrise, Sunset," and "If I Were a Rich Man." Milkman Tevye's world is turned upside down by both the changing political landscape in his home country, and the changing ideals of a younger generation. Set in the area now called Ukraine, today this nearly 60 year old musical resonates in a newly relevant way.



November 30-December 3: Miracle on 34th Street:

A Live Radio Play

Lux Radio Script Adapted by Liz Zazzi

A holiday classic!

The Winni Players annual live radio drama is back! When a department store Santa claims he's the real Kris Kringle, his case gets taken all the way to the Supreme Court. A little girl's belief makes the difference in the 'miracle.' With live Foley effects and a host of on-air personalities, the radio play is an annual highlight!

Sponsored by:



2023 SHOW LISTINGS

WINTER

December 15-31: Cinderella: A Traditional English Panto

By Neil Pankhurst

Don't let the clock run out before you see the biggest panto of them all!

Your favorite family holiday event is back! Filled with bright lights, big costumes, dynamic dancing, silly slapstick for the littles, innuendo for the adults, and a double entendre or two (or three!), our annual English Panto is a treat for ages 3 to 103! "Boo" the villain, "cheer" the hero and join us for an English tradition that has been a holiday staple since the nineteenth century!

We're proud to bring a little old England to New England!



The Winnepesaukee Playhouse Education Department promotes the developmentally appropriate acquisition of theatrical skills, fosters a life-long appreciation of the technique, history, and literature of theatre and its ancillary fields of study, and—above all—seeks to inspire its students to use theatre as a tool to develop empathy, with which they may explore and come to better understand the world.



The Winni Players Community Theatre uses live theatre to provide its members with opportunities for artistic expression, personal growth, and friendship.

We build community through theatre.

NORMANDIN, CHENEY & O'NEIL, PLLC
ATTORNEYS AT LAW

Experience you can rely on. Advice you can trust.

*Wills, Trusts and
Estate Planning*

*Real Estate and
Land Use*

*Commercial and
Corporate Law*

Injury Law

*Civil and Criminal
Litigation*

603-524-4380
(or 1-800-529-0631)

www.ncolaw.com

213 Union Avenue
P.O. Box 575
Laconia, New Hampshire
03247

SHOP. DINE. EXPLORE.



Lakes Region's Premier Shopping Destination

Unique Marketplace Shops
5 Distinctive Restaurants • 4 Inns
Boardwalk, Park & Sculpture Walk
Friday Night Music - July & August

millfalls.com/shop • Routes 3 & 25 Meredith, NH



GOLDEN VIEW
HEALTH CARE CENTER
A Non-Profit Community

The Retreat at Golden View

Short-stay rehab conveniently located in the Lakes Region



You have a choice! Golden View works with hospitals throughout New England, so no matter where your hospital stay may be, you can recover close to home!

The Retreat features private suites with private bathrooms, as well as a tailored therapy plan. We are contracted with many private insurances and Medicare.

To learn more or prebook your stay, please call our admissions department at 279-8111.

Assisted Living • Long-Term Living • Short-Stay Rehab

Meredith, NH • 279-8111 • www.GoldenView.org •



MALONE, DIRUBBO & COMPANY, P.C.
CERTIFIED PUBLIC ACCOUNTANTS

Serving Businesses & Individuals For Over 35 Years

Three Convenient Locations

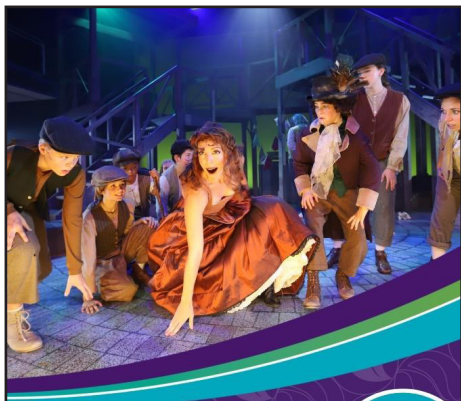
501 Union Avenue, Laconia 603-528-2241
64 Franklin Street, Franklin 603-934-2942
9 West Street, Lincoln 603-745-3121

www.mdccpas.com

Member AICPA, Private Companies Practice Section, NH Society of CPAs

the
WINNIPESAUKEE
playhouse

FOLLOW US ON



Proud to partner
with Winnepesaukee
Playhouse to provide
another season of
spectacular performances.

Named
Best-In-State
Banks for NH
by Forbes
Magazine
2022



FSB
Franklin Savings Bank
FSBNH.BANK



#HappyUp at The Studio!

Experience the Lakes Region's most joyful and
eclectic shopping experience for yourself!



598 Main Street, Laconia, NH
603-524-8008 • thestudionh.com



**FIRESIDE INN
& SUITES**

Lake Winnepesaukee
Year Round Comfort - Grab & Go Breakfast
Indoor Pool & Hot Tub - Outdoor Pool seasonal

ENJOY the Show!!

603.293.7526 / FiresideinnGilford.com

PLAN FIRST.

Period.

It's about your plan. It's about you.

To have a conversation about your financial plan with an advice-only guy, give me a buzz.

If you're in the trades and own a business—even better.

No suits or ties will be worn to this meeting. And there will be Dad jokes.

36 Country Club Road, Suite 926 – p:603-524-4994 – joel@planfirstperiod.com – www.planfirstperiod.com

Advisory Services through Cambridge Investment Research Advisors, Inc., a Registered Investment Advisor. Cambridge and PlanFirst, LLC are not affiliated.



Altrusa Int'l of
Laconia, NH, USA

Become a member!

*Join with others who are
creating better communities!*

www.altrusalaconia.org
altrusalaconia@gmail.com
Follow us on Facebook



Gilford Home Center
A SMALLER BOX WITH A BIGGER VALUE

gilfordhomecenter.com
603-524-1692
Hours, Mon. - Fri. 7:00 - 5:00
Sat. 8:00 - 3:00
Sun. 9:00 - 1:00



Mon.-Fri. 7:30-5:00, Sat. 7:30-3:00
and Sun. 7:30-1:00
gilfordtruevalue.com
603-524-5366



**LOVERING
AUTO GROUP**

Meredith



4.9



MISIASZEK
TURPIN



ARCHITECTS

MISIASZEKTURPIN.COM

residential | non-residential | historic preservation



Melcher & Prescott INSURANCE

KNOWLEDGE. TRUST. CONFIDENCE.



Since 1862 Melcher & Prescott Insurance has been a proud sponsor of the arts and culture in our community.

Our local professional staff are here to assist you with all your insurance needs including homeowners, automobile, watercraft, business and employee benefits.

We work closely with our clients to secure the proper coverage at the best price!

www.melcher-prescott.com | insure@melcher-prescott.com | 603-524-4535



Best Insurance Company

This is what retirement looks like.



An active community of friends is waiting for you at Taylor.


Taylor Community is located in the beautiful Lakes Region of New Hampshire with campus locations in both Laconia and Wolfeboro. Finding a home at Taylor means more than access to a stunning new cottage or apartment - it means receiving the keys to present and future peace of mind. Whether you prefer an active lifestyle filled with fitness classes and an extensive lineup of social and recreational opportunities, or would rather enjoy a fine-dining experience with friends after a day spent by the lake... Taylor is the place for you!



Discover Taylor Community
taylorcommunity.org

Laconia
435 Union Avenue
Laconia, NH 03246

Wolfeboro
83 Rolling Wood Drive
Wolfeboro, NH 03894

 (603) 366-1400 / taylorcommunity.org
A not-for-profit since 1907

The Winnepesaukee Playhouse Presents the Playhouse
Professional Company in

MAMMA MIA!

Music and Lyrics by
BENNY ANDERSSON
BJÖRN ULVAEUS

And some songs with STIG ANDERSON
Book by CATHERINE JOHNSON
Originally Conceived by JUDY CRAYMER

Mamma Mia! was originally produced in London by Judy Craymer, Richard East and
Björn Ulvaeus for Littlestar in association with Universal.

Additional Material & Arrangements
MARTIN KOCH

Music Published by Universal Music Publishing Group and EMI Grove Park Music Inc.
and EMI Waterford Music Inc.

Mamma Mia!

is presented through special arrangement with Music Theatre International (MTI).

All authorized performance materials are also supplied by MTI.

www.MTIShows.com

Some lighting equipment provided by Port Lighting

Production Team

Director/Choreographer.....Chloe Kounadis
Music Director.....Braden Chudzik
Stage Manager.....John Findlay
Scenic Designer.....Melissa Shakun*
Costume Designer.....Olivia Kirschbaum
Lighting Designer.....Davis Vande Steeg
Sound Designer.....Thom Beaulieu

*Member



UNITED
SCENIC
ARTISTS

The Cast

Sophie Sheridan.....	Teghan Marie Kelly
Ali.....	Deijah Faulkner
Lisa.....	Sabrina Koss
Donna Sheridan.....	Ashley Meeken
Tanya.....	Ashley Rubin
Rosie.....	Dwan Hayes
Sky.....	Andy Edelman
Pepper.....	Vinnie Canale
Eddie.....	Eduardo Uribe
Harry Bright.....	Jason Thomas Sofge
Bill Austin.....	Alex Huffman
Sam Carmichael.....	Andy Hansen
Father Alexandrios.....	Kevin L. Scarlett

Ensemble

Yardén Barr, Gabriel Logan, Ashley Nicole Martin,
Kelsey McCollaum, Maclain Rhine, Kevin L. Scarlett,
Irene Schultz, Colin Stansky

Dance Captain.....	Irene Schultz
Vocal Captain.....	Ashley Nicole Martin
Understudy for Sophie.....	Sabrina Koss
Understudy for Ali/Lisa.....	Yardén Barr

Thank you to:

Matt Cahoon, Becky Gregoire and Edgewater Academy of
Dance, New Hampton School, North Country Center for
the Arts at Jean's Playhouse, Seacoast Repertory Theatre

**PLEASE NOTE: this production contains
non-allergenic, water-based theatrical haze as
well as a strobe light effect.**

From The Winnepesaukee Playhouse Education Department...

Since its premiere in 1999, *Mamma Mia!* has captured the hearts of audiences worldwide with its infectious energy, timeless music, and heartwarming story. Created by British playwright Catherine Johnson, with music and lyrics by the iconic Swedish pop group ABBA, this jukebox musical has become a global sensation, delighting millions of theatergoers with its feel-good, irresistible charm.

At the heart of the musical are ABBA's iconic songs. From the toe-tapping "Dancing Queen" to the titular "Mamma Mia," the music of ABBA adds an undeniable layer of nostalgia and joy to the show. The catchy melodies ensure the show stays with you on the car ride home...and possibly long after that.

Mamma Mia! can be argued to be one of the most popular and successful jukebox musicals of all time. Although many say that John Gay's *The Beggar's Opera*, all the way back in 1728, holds the title of the first jukebox musical, the genre finds its roots in the early 20th century when theatre productions began incorporating popular songs of the time. They gained momentum in the 1960s with shows like *Hair* and *Jesus Christ Superstar*, which showcased the integration of contemporary music into the fabric of the narrative. This era marked a significant shift in musical theatre as it started to embrace the soundtracks of popular culture.

A jukebox musical aims to blend the nostalgic power of beloved songs with a theatrical narrative. If done right, this blend should feel seamless. The familiarity of the songs draws audiences in, allowing them to feel a personal connection to the characters and their journeys. One of the biggest challenges (and often critiques) of this genre is that, unlike most musicals, the writers start with the music and adapt the narrative to fit around the songs.

As Chloe Kounadis, the director of the Playhouse's production of *Mamma Mia!*, points out, most jukebox musicals written today are pieces about the band or singer themselves, with shows like *Beautiful: The Carole King Musical*, *Always Patsy Cline*, *Tina*, *The Buddy Holly Story* among them. *Mamma Mia!* then owes much of its success to the fact that it is a self-contained story, not about ABBA, but one conceived and crafted by them. This focus on narrative first helps set *Mamma Mia!* apart from most modern jukebox musicals. And while the story isn't about ABBA, their fingerprints are everywhere throughout, from the vibrant and energetic choreography to the bright, colorful costumes; this show drips in the joy that is ABBA. That's why the show has the staying power and pull that it does. Fans come to celebrate the music and fun of the band they love while watching a play that surpasses a two-hour cover band on stage.

When discussing the show's appeal, Dean Nolen, who played the original Harry Bright on Broadway, says simply, "It's a love letter. From the love story at the show's heart to ABBA's love for their fans and their fans love right back to ABBA, the whole thing is a love letter. And love is fun and infectious, and it's just a good night out."

We hope you enjoy your "good night out" with us and embrace the joy, from the opening notes of the show to the bopping of your head on the car ride home as the music still sits in your ear.

--Cory Lawson
Director of Education and Community Engagement

ABBA FACTS:

1. A competition to find a suitable name for the group was held in a Gothenburg newspaper. The group was impressed with the names “Alibaba”, “FABB”, and “Baba”, but in the end all the entries were ignored and it was officially announced in the summer that the group were to be known as “ABBA.”
2. Before they were ABBA the band was known as Festfolk, meaning party people in Swedish.
3. The name ABBA was first used by a food company established in 1838 and some of its most well-known products include Kalles kaviar and Abba pickled herring. In 1974, they decided to let Agnetha, Björn, Benny and Anni-Frid share their name, though ABBA is actually an acronym of the first letters of the band members’ first names.
4. ABBA first shot to worldwide fame when they won the Eurovision Song Contest in April, 1974 with “Waterloo”, giving Sweden its first triumph in the contest.
5. Those outrageous stage outfits were an easy way to save money on their tax bill. ABBA exploited a Swedish law, which stated clothes were tax deductible if their owners could prove they were not used for daily wear.
6. Not everyone in the band was Swedish. Anni-Frid Lyngstad was born on November 15th, 1945 in Bjørkåsen, Norway, the result of a liaison between young Synni Lyngstad and a German officer.
7. Led Zeppelin recorded their last album, *In Through the Out Door*, at ABBA’s Music Studios in Stockholm.
8. ABBA were massive in Australia. A 1976 TV Special for the Australian market got more views than the 1969 moon landing, “The Best of ABBA,” was screened four times to record-setting ratings.
9. During the Cold War, currencies from behind the Iron Curtain were embargoed. However, ABBA was quite popular in the Soviet states. As they could not accept rubles, the band instead received royalty payments from the Soviet Union in oil commodities.
10. “Hej, Gamle Man”, a song about an old Salvation Army soldier, became the quartet’s first hit. The record was credited to Björn and Benny and reached number five on the Swedish charts and 114 on the Cashbox singles chart in the US.
11. In 2005 Madonna revealed that she wrote a letter to the members of ABBA begging to use their music on one of her tracks. The star wanted permission to sample the Swedish pop titans’ massive 1979 disco hit “Gimme, Gimme, Gimme (A Man After Midnight)” for her latest single “Hung Up”. ABBA gave her permission.
12. 3.5 million people applied for tickets for two dates to see ABBA at London’s Royal Albert Hall, enough to fill the venue an astonishing 580 times.
13. ABBA have sold over 300 million albums and singles worldwide.
14. Björn and Benny are notorious for being protective of their catalog. In 1987, they sued British acid house band The KLF over the unauthorized use of a passage from “Dancing Queen.” Almost a decade later, they allowed The Fugees to use a sample from “The Name Of The Game” on their 1996 single “Rumble In The Jungle.”

A Note from the Director

I am a Greek American millennial who grew up being obsessed with two things: musical theatre and weddings. I was a major theatre snob - think *Glee's* Rachel Berry with better people skills.

When I heard about *Mamma Mia!*, a jukebox musical that takes place on a fictional Greek island with ABBA music and tells the story of a young woman's impending nuptials, I was skeptical. They couldn't possibly capture the splendor of the Greek islands? Would an entirely pop score capture the emotional turmoils of the bride?

Enter Meryl Streep and a group of Greek Yiayias (grandmothers) singing "Dancing Queen" on a dock. I was in. It was impossible to deny the warmth, heart, and joy of this show. I became a *Mamma Mia!* convert.

Mamma Mia! opened on Broadway on October 18th 2001 at the Winter Garden Theatre. It was the first show to open on Broadway after the tragedy of 9/11. Though the show wasn't earth shattering, thought provoking, or even a critical favorite (winning zero Tony Awards), it was the show we needed at that moment. It filled a very specific void in American pop culture. It went on to become a smash hit around the world being translated into multiple languages, running in over 50 countries, and being forever memorialized in two successful films.

My time on the National Tour of *Mamma Mia!* kicked off in September 2016, just a few months before the 2016 election. I remember exactly where I was the night the election was called, a dreary hotel in British Columbia. The next morning when we boarded the tour bus, there was a solemn energy in the air. Our company, made up of a majority of women and queer individuals, was visibly rocked by the election results. There were many questions swirling in the dressing room over the next few days. What was our role as artists in this new landscape? The answer was surprisingly simple. Our job was to provide escapism to the audience. We were a musical "post-card" from some utopian world that would bring people joy and nostalgic comfort regardless of where we were playing.

Show after show, city after city, I was blown away by seeing the multigenerational groups who came to the show. Oftentimes they wore feather boas, sequins, or their own recreations of the show costumes. Grandmother, mother, daughter, granddaughter all sitting together and equally enjoying the performance. I was reminded of the lyrics that Sophie and the dads sing,

"So I say thank you for the music, the songs I'm singing
Thanks for all the joy they're bringing
Who can live without it, I ask in all honesty
What would life be without a song or a dance, what are we?
So I say thank you for the music
For giving it to me"

I am honored to be leading this production of *Mamma Mia!* at the Winnepesaukee Playhouse. Thank you for being here and for supporting live theatre. Opa! Opa! Enjoy the show!

--Chloe Kounadis

ACT ONE:

I Have a Dream (Prologue).....Sophie
Honey, Honey.....Sophie, Ali, Lisa
Money, Money Money.....Donna and Company
Thank You for the Music.....Harry, Bill, Sam, and Sophie
Mamma Mia.....Donna, Harry, Bill, Sam, and Company
Chiquitita.....Rosie, Tanya, and Donna
Dancing Queen.....Rosie, Tanya, and Donna
Lay All Your Love On Me.....Sky, Sophie, Pepper, Eddie, and Company
Super Trouper.....Donna, Tanya, Rosie, and Girls
Gimme, Gimme, Gimme.....Lisa, Ali, Sophie, Sam, Bill, Harry, and Girls
The Name of the Game.....Sophie and Bill
Voulez Vous.....The Company

- 15-minute intermission -

ACT TWO:

Under Attack.....Sophie and Nightmare Chorus
One of Us.....Donna
S.O.S.....Sam and Donna
Does Your Mother Know?.....Tanya, Pepper, and Company
Knowing Me, Knowing You.....Sam
Our Last Summer.....Donna and Harry
Slipping Through My Fingers.....Donna and Sophie
The Winner Takes it All.....Donna
Take a Chance on Me.....Rosie and Bill
I Do, I Do, I Do.....Sam, Rosie, Tanya, Donna, and Company
I Have a Dream.....Sophie and Company
Bows.....The Company

PLACE: A Mediterranean Island

PAVING OUR WAY TO THE FUTURE!



BETWEEN NOW AND SEPTEMBER 2024

the Winnepesaukee Playhouse needs to **raise \$200,000** for important improvements to our campus. Your generous donation will help us to resurface campus roadways and parking lots for a safer, more enjoyable theatre experience!

Donate online at www.winnepesaukeeplayhouse.org!

**THANK
YOU FOR
YOUR
SUPPORT!**

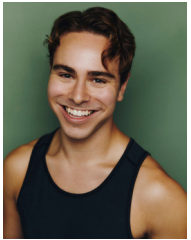
The Cast



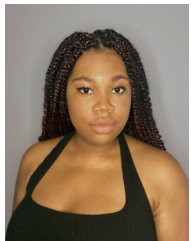
Yardén Barr (she/her) (Ensemble/Understudy Lisa/Ali) is so excited to be spending part of her summer at the Winnepesaukee Playhouse! She was most recently seen as Chava in the *Fiddler on the Roof* Broadway national tour. Recent regional credits include Belle in *Beauty and the Beast* (Area Stage Company), Mary Easty in *Salem* (Goodspeed Musicals), and Dorothy u/s in *Wizard of Oz* (The Argyle Theatre). BFA in Musical Theatre from the Hartt School. Big thanks to her friends and family for always supporting her!



Vinnie Canale (Pepper) is ecstatic to work with the Winnepesaukee Playhouse this summer! As of this past May, Vinnie graduated from The State University of New York at Fredonia, with a BFA major in Musical Theatre and a minor in Dance. Their recent credits include *Lear* (Goneril) with Walter Gloor Mainstage Series, *A New Brain* (Gordon Michael Schwinn) with Fredonia Performing Arts Company, *Mystic Pizza* (Frank) with Adirondack Theatre Festival, *Mamma Mia!* (Ensemble, U/S Sky/Eddie) with The Encore, and *Traffic & Weather* (Ensemble) with Adirondack Theatre Festival. vinniecanale.com



Andy Edelman (Sky) Winnepesaukee Playhouse debut! Andy is so excited to play Sky in *Mamma Mia!*, truly a dream role and dream show! Originally a Boston boy, Andy is currently based in NYC and is a recent graduate of Elon University's prestigious BFA Music Theatre program. Recent highlights include Gregory Gardner in *A Chorus Line* (New London Barn Playhouse), Dance Captain & Associate Choreographer for *Spamalot* (Arizona Broadway Theatre), *Pippin*, *La Cage Aux Folles*, *The Music Man* (Reagle Music Theatre). Special thanks to my family and my amazing agent Stacy! www.andyedelman.com @andy_edelman



Deijah Faulkner (Ali) is very excited to be a part of the Winnepesaukee Playhouse this season. Her favorite past credits include: Vanessa Rosales (*Inconvenient Miracle: Off Broadway*) Miranda (William Shakespeare's *The Tempest*), Nehebka (*Aida*), and Susan (*Tick Tick Boom*). Deijah studied Musical Theatre Performance and Costume Design at East Stroudsburg University where she received a BA. She wants to thank her mom & sister, her partner Devon, and her friends for always supporting her passions.



Andy Hansen (Sam) is thrilled at the opportunity to play Sam Carmichael in the glorious disco show, *Mamma Mia!* He holds an MFA in acting, from University of Central Florida, and has recently moved to NYC. Notable credits include Grandpa Who in *How the Grinch Stole Christmas* National Tour, George Banks in *Mary Poppins*, Andre in *Dirty Rotten Scoundrels*. "I ask in all honesty, what would life be? Without a song or a dance, what are we? So I say thank you for the music, for giving it to me." insta: @andyactstoo

The Cast



Dwan Hayes (Rosie) is thrilled to be back at the Winnepesaukee Playhouse! A native of Winston Salem, North Carolina, she has a B.M. in Musical Theatre from the University of North Carolina at Pembroke. Regional: *Ghost* (Oda Mae Brown), *Saturday Night Fever* (Candy), *Jesus Christ Superstar* (Mary Magdalene), *Hairspray* (Motormouth Maybelle), *Our Town* (Mrs. Soames), *A Raisin in The Sun* (Lena Younger), *Smokey Joe's Cafe* (B.J.) Tours: *Buddy... The Buddy Holly Story* (Apollo Performer), *Harriet Tubman and the Underground Railroad* (Ms. Ross). She was also featured as a Supporting Vocalist backing Sam Smith at The 60th Annual

Grammy Awards. Dwan would like to give special thanks to her family and friends for their love and support. www.dwanhayes.com, www.reachforit.net



Alex Huffman (Bill) Favorite onstage credits include: *Sweet Charity* (Oscar), *Les Misérables* (Thénardier), LaChiusa's *Hello Again & See What I Wanna See*, *The Nina Variations*, and *The Producers*. Alex's work as a producer and researcher has included the documentaries *Step* (Fox Searchlight, 2017) and *Found* (Netflix, 2021), as well as the newly-opened Museum of Broadway in NYC on 45th Street. Education: Otterbein University (BFA), NYU (MA). Huge thanks to the Playhouse for this opportunity, Haley for the push, and to Mom, Dad, and Gammy for the music.



Teghan Marie Kelly (Sophie) is simply tickled to be a dancing queen, once again, on the Winnepesaukee Playhouse stage. As a Meredith native, Teghan finds few more pleasures in this life than the opportunity to do what she loves in the place she will forever call home. You may recall seeing her at the Winnepesaukee Playhouse as Belle in *Beauty and the Beast: A Traditional English Panto*; Sarah in *No Wake*; Aurora in *Sleeping Beauty: A Traditional English Panto*, and many more. She recently directed students in *A Midsummer Night's Dream* at Northern Stage's BridgeUp program....and BOY is there beauty in bringing laughter, love and confidence to young lives through the art of theatre! She, as always, would love to thank her family for their unconditional love and constant support!



Sabrina Koss (Lisa/Understudy Sophie) is beyond excited to be a part of this amazing summer season! Originally from New York, Sabrina is a graduate of Boston Conservatory's BFA Musical Theatre program. Recent credits include: *High School Play: A Nostalgia Fest* (Alley Theatre), *Madame Defarge* (Gloucester Stage Company), *Laughing Stock* (Barnstormers Theatre), *Tuck Everlasting* (Umbrella Stage Company), and *Grease, Catch Me If You Can*, and *The Pajama Game* at New

London Barn Playhouse, where she was nominated for a NH Theatre Award for her portrayal of Molly Aster in *Peter and the Starcatcher*. You can also see her as Lola in the feature film *About Fate*, now on Amazon Prime. Thanks to Mom, Dad, Mara, Jady, and Amy. Follow Sabrina at @sabinamkoss and sabinakoss.com. Enjoy the show!

The Cast



Gabriel Logan (Ensemble) is stoked to be making his Winnepesaukee Playhouse debut! Currently a rising Sophomore at Elon University, Gabriel spent last summer at The Barrington Stage Company understudying in *A Little Night Music*. He was recently in *Head Over Heels* at Elon University, and a new works production called *Deep Water Ballad*. Gabriel would like to thank his family and friends, Gulshirin Dubash, Liz Gray, and Brian Carter.



Ashley Nicole Martin (she/her) (Ensemble/Vocal Captain) is thrilled to spend the summer in Greece by way of New Hampshire! Favorite regional credits include *Head Over Heels*, *42nd Street* (Umbrella Stage Company), *Elf* (Surflight Theatre), *Show Boat*, *South Pacific* (ABT), *42nd Street*, *A Chorus Line*, *Pippin*, *Merrily We Roll Along* (Weathervane Playhouse), *White Christmas* (AC3), and *Footloose* (Laguna Playhouse). Proud MMC grad. @ashwithasplash



Kelsey McCollaum (Ensemble) is thrilled to be making her Winnepesaukee Playhouse debut! Kelsey was last seen on *Law and Order's* episode *Black and Blue*. Some of Kelsey's favorite credits include *Merrily We Roll Along* (Mary Flynn), *Grease* (Jan), *Beehive* (Judy), *42nd Street* (Maggie Jones) in which she was a BroadwayWorld Award Winner. Kelsey would like to thank the Winnepesaukee team, the cast and crew, her agent Brian, and of course her parents, for following her to whatever state she is performing in and for their constant love and support. Enjoy the show!



Ashley Meeken (Donna) is thrilled to return to the Winnepesaukee Playhouse this season! In 2019 she played Velma in *Chicago* earning a New Hampshire Theatre Award for Best Actress, in 2020 she played Soccer Mom in the Education Department's production of *The Wolves*, in 2021 she starred in the one-woman musical *Tell Me on a Sunday*, and in 2022 she played Nancy in *Lionel Bart's Oliver*. Ashley's training includes studying theatre and dance

at the Walnut Hill School for the Arts in Natick, MA. Ashley earned her B.F.A. in Musical Theatre from the Cincinnati College-Conservatory of Music. Some of Ashley's professional credits include performing in the musical *Chicago* at the Edinburgh Fringe Festival in Scotland, singing with the Cincinnati Pops Orchestra on PBS, and performing at NYC's Lincoln Center. Ashley traveled the world as the company manager and principal singer for Jean Ann Ryan Productions on Norwegian Cruise Line and P&O Ventura Cruise Lines. Since returning back to NH, Ashley has performed with the Lakes Region Symphony Orchestra and played numerous roles locally. Her favorite roles include Dorothy Brock in *42nd Street*, Irene Molloy in *Hello Dolly*, Fantine in *Les Miserables*, Cassie in *A Chorus Line*, and the iconic role of Eva Peron in *Evita*. Ashley is the proud owner/director of The Studio at Meredith Bay, a center for dance and performing arts in Meredith, NH.

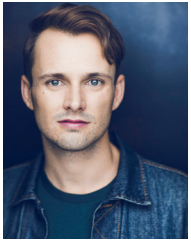
The Cast



Maclain Rhine (Ensemble) is thrilled to be spending his summer with the Winnepesaukee Playhouse in *Mamma Mia!* A rising senior musical theatre major at Rider University, educational credits include *The Play That Goes Wrong* (Max), *Polaroid Stories* (Narcissus), *Kiss Me, Kate!* (Ensemble/Dance Captain), and *Cabaret* (Dance Captain/Swing). Regional credits include *Kiss Me, Kate!* and *Hair* with Cortland Repertory Theatre as well as the world premiere musical, *Clean Slate* (Iggy), with Passage Theatre Company. LINK Class 5! @rhinemaclain



Ashley Rubin (Tanya) is thrilled to be returning for her 4th Winnepesaukee Playhouse production! This is also Ashley's 4th production of *Mamma Mia!*, after having been Associate Director once and two subsequent turns as her favorite Dynamo, Tanya! National Tour- *Grease!* (Frenchy). Ashley was a featured soloist in the sold out Off-Broadway run of *I'll Say She Is: The Lost Marx Brother's Musical*. Favorite regional credits include *Victor/Victoria* (Norma Cassidy), *A Chorus Line* (Kristine), *Promises, Promises* (Margie McDougall), *La Cage* (Angelique), *White Christmas* (Rita). @AshleyRubin1



Kevin L. Scarlett (Ensemble/Father Alexandrios) is so excited to be making his Winnepesaukee Playhouse debut in *Mamma Mia!* Currently based in New York, he actually made his professional debut just up the road in North Conway playing Prince Charming and Duke the Dragon at *Story Land!* Most recently, Kevin made his Off-Broadway debut in *XIMER (Shimmer): A New EDM Musical*, where he played the roles of Robert and Dave. National Tours: *A Christmas Carol* and *Biscuit*. Regional Credits: *Jesus Christ Superstar*, *The Who's Tommy*, and *The Wizard of Oz*. Thanks to all

for him. Working professionally in theatre is not possible without a loving tribe to support you. For that, Kevin would like to give a special shoutout to Mom, Dad, Brian, Katherine, Rachel, and all the Spaders. Most importantly, he would like to thank his loving husband Jack, who's unwavering partnership, support, and faith helps him to achieve the dreams he has set out to accomplish.



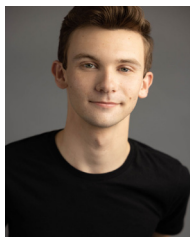
Irene Schultz (Ensemble/Dance Captain) is a graduate of the Pace School of Performing Arts at Pace University in NYC, completing a B.F.A. in Commercial Dance with Theatre Focus and a concentration in Pedagogy. She has also trained in the film industry at the Edge Performing Arts Center in Los Angeles, CA, as well as completed her yoga teacher certification in Goa, India. In recent years she has made her national tour debut as Belle/Martha Cratchit in *A Christmas Carol*, as well as her professional Shakespeare debut with the New York Times applauded 'Theatre Under the Stars.' Prior, she performed with the TIGER

educational touring theatre company. Favorite credits include "Frenchie" in the Winnepesaukee Playhouse's award-winning production of *Cabaret*, "Victoria" in *CATS*, "Lily St. Regis" in *Annie*, and dance captain for the New England premiere of *Heathers: The Musical*. Formerly of Meredith, Irene is ecstatic to return this summer to the beautiful Lake Winnepesaukee she calls home, and to the Winnepesaukee Playhouse where she began as a young teen many performances ago.

The Cast



Jason Thomas Sofge (Harry) is thrilled to be making his Winnepesaukee Playhouse debut! Credits: The Constable in *Fiddler on the Roof* (Broadway 1st National Tour), Elyvra in *From the House of the Dead* (Metropolitan Opera, National Opera de Paris, Staatsoper im Berlin), u/s Maitre D in *The Merry Widow* (Metropolitan Opera), Tommy Fatty, *Fatty No Friends* (Soho Playhouse). "Special thanks to the rockstar team at Firestarter Entertainment!"



Colin Stansky (Ensemble) is thrilled to be making his Winnepesaukee Playhouse debut! Some of his favorite previous work includes *Kiss Me Kate* (Bill), *Disaster* (Scott), and *Mary Poppins* (Robertson Ay/Neleus). Many thanks to the artistic and creative teams here at the Playhouse! Insta: @colinstansky



Eduardo Uribe (Eddie) is thrilled to be joining the Winnepesaukee Playhouse family. National tours: *How The Grinch Stole Christmas the Musical* (Papa Who), *Legally Blonde* (Nikos), *South Pacific* (Harbison), *An American In Paris* (Mr. Z), *Jesus Christ Superstar* (Swing), *Sweet Charity* (Vittorio). Regional: *A Chorus Line* (Paul), *She Loves Me* (Kodaly), *La Cage* (Cagelle), *Kinky Boots* (Angel), *Saturday Night Fever* (Cesar). Love you, Sammy. Special thanks to John and Donna Findlay.

THE FITNESS
Edge
WE OFFER LIVE & ZOOM CLASSES

BOOT CAMP PLUS | INDOOR CYCLING | TOTAL BODY TONE
BARRE | POSTURE | YOGA | ZUMBA | TRX AND MORE!

169 DANIEL WEBSTER HIGHWAY
MEREDITH NH

78 WHITTIER HIGHWAY
MOULTONBOROUGH NH

OFFERING NH LAKES REGION 2 CONVENIENT HEALTH CLUB LOCATIONS!

(603) 279-0411
WWW.THEFITNESSEDDGENH.COM



The Production Team

Melody Carter (Costume Assistant) is new to the Winnepesaukee Playhouse this year. The past several years they have been the Wardrobe Lead/stitcher at the Springer Opera House in Columbus, GA. She is also a student at Columbus State University. A few of her favorite shows that she has been involved with are *Cinderella*, *The Color Purple*, and *Bodyguard*. She is very excited to share/learn in her first season with the Winnepesaukee Playhouse.

Braden Chudzik (Music Director) is a Buffalo, NY native who is making his Winnepesaukee Playhouse debut! Select credits include *Legally Blonde* (22/23 National Tour), *Legally Blonde* (Palace Theatre), *Mary Poppins* (The Naples Players), *Hairspray* (Kavinoky Theatre), and *Footloose* (Jenny Wiley Theatre). So much love to mom.

Francisco Fialho (Scenic Carpenter) is a newly graduated theatre technician/carpenter. Francisco has built a number of sets, previously working on shows in Keene State College as both a shop hand and run crew.

John Findlay (Stage Manager) Graduate of Plymouth State University, NH. B.A. Theatre Arts, Focus in Lighting Design and Acting. Touring: *Oedipus*, *Buddy: The Buddy Holly Story* (2020, 2021), *Menopause the Musical*. Regional: *The Mountaintop*, *Betrayal*, *Dani Girl*, *Hooligans and Convicts* (The Winnepesaukee Playhouse), *Noises Off*, *Deathtrap* (The Cape Playhouse) among others. John is thrilled to be spending another summer back home in Meredith as well as with the Playhouse! Much love to Mom.

Gwen Elise Higgins (Scenic Charge Artist) is a multi-hyphenate theatre artist from the Midcoast of Maine working throughout New England. Graduated from University of New Hampshire with a BA in Theatre. A lifelong learner and artist experimenting in countless mediums with varying degrees of success and welcome failure. Painter, designer, actor, etc. www.gehiggins.com

Libby Hinshaw (Electrics Supervisor) is a recent graduate with a focus in lighting tech and design. She previously designed *After Jane* (Co-Designer), *Silent Sky*, *Los Vendidos*, and *Bamboo Box* at The Janet Kinghorn Bernhard Theater. Her assistant design credits at the JKB Theater include Heddatron and The Sor Juana Project. Some of her technical credits are *Rent* at A Contemporary Theater of Connecticut; *The Place That Made You*, *Eurydice*, *And Baby Makes Seven*, *The Chaparral*, *John Proctor is the Villain*, *Somewhere: A Primer for the End of Days*, *Springfest*, *Radium Girls*, *The Harvest*, and *The Hour We Knew Nothing of Each Other* at the JKB Theater. Libby holds a BS in Theater and a BA in Psychology from Skidmore College.

Olivia Kirschbaum (Costume Designer) is a costume designer and wardrobe technician from Akron, Ohio. She recently graduated from Ithaca College with a BFA in Theatrical Production and Design and a Minor in Visual Art. Her most recent costume design work includes *Wetsuitman* at the Cherry Art Space and *House of Desires* at Ithaca College. She is currently working as the wardrobe Supervisor with Les Ballets Trockadero de Monte Carlo, the world's foremost all-male ballet company. She is thrilled to be working with the Winnepesaukee Playhouse and collaborating with a talented group of artists. www.oliviakirschbaum.com

The Production Team

Chloe Kounadis (She/Her) (Director/Choreographer) Winnepesaukee Playhouse debut! Originally from Framingham, MA, Chloe is a Greek American director, playwright, and arts educator based in New York City. Recent directing credits include Michael Long's *Do I Know You?* and Gillian Beth Durkee's *On Trash Monsters*. As an actor, Chloe was seen on the National Tours of *Mamma Mia!* (Ali) and *A Charlie Brown Christmas* (Lucy). Chloe's solo show *Approachable Face* premiered in September 2022 at the Matthew Corozine Studio Theatre in New York City. Training: BFA Musical Theatre from The Hartt School at the University of Hartford. Chloe is a member of Actors' Equity Association. She lives in Harlem with her husband, Jake, and their adorably anxious dog, Mia. This one's for Mom and Dad! IG@ChloeKounadis www.chloekounadis.com

Natalya Salvati (Wardrobe Supervisor) is a senior attending the University of New Hampshire, double majoring in Design and Technology and Women's Studies. This is Natalya's first season with the Winnepesaukee Playhouse! Natalya's previous experience includes two summer seasons with Prescott Park Arts Festival (*Footloose* and *You're A Good Man Charlie Brown*) and Collegiate experience at UNH. The university experience includes stage managing for the UNH theatre department and theatre club: *Mask and Dagger* (*Roe, Anne of Green Gables, Hecuba, Tartuffe, She Kills Monsters, The Shaking Earth*), assistant stage managing at UNH (*Into the Woods, Hershel & the Hannukah Goblins, and We the People*), in depth costume based independent studies, costume design, wardrobe crew (*The Odyssey*), and carpentry. Natalya is very excited about the opportunity to wardrobe supervise and work with all of the different casts and creative teams!

Melissa Shakun (Scenic Designer) has been designing scenery at the Winnepesaukee Playhouse since 2009. Melissa has been designing scenery and art directing for *Saturday Night Live* since 2018. Her work has earned her an Emmy Award win and a nomination for Outstanding Production Design For A Variety, Reality Or Competition Series for seasons 46 and 47 of *Saturday Night Live*. Prior to SNL, Melissa served as the Art Director for NBC's musical production of *Jesus Christ Superstar Live*. Her work was recognized by the Television Academy with her first Emmy Award win for Outstanding Production Design For A Variety Special. Additional Art Direction work includes *The Kids Tonight Show, Difficult People, The Jim Gaffigan Show, The Mysteries of Laura, The Americans*, and selected episodes of *Blindspot* for TV. She assistant art directed *East New York, Tell Me A Story, Blindspot, Homeland, Sneaky Pete, The Normal Heart* movie, *Katie Couric's Talk show* as well as *Antarctica, Empire of the Penguin*, a ride at Sea World in Orlando, Florida. Broadway credits include *Scandalous, A Christmas Story, Baby It's You, Present Laughter* (Assistant Set Designer) *Bye Bye Birdie* (Associate Set Designer). Melissa earned an MFA from the Conservatory of Theatre Arts and Film at SUNY Purchase, and a BFA in Art Education from Syracuse University. She would like to thank her husband Lee, Calvin, her family and friends for their constant support.

Davis Vande Steeg (Lighting Designer) is thrilled to be back at the Winnepesaukee Playhouse for *Mamma Mia!* His past design credits with the Playhouse include *No Wake* and *Sleuth*. Davis is currently the lighting supervisor at the Titusville Playhouse working and designing productions like *Priscilla - Queen of the Desert, Evil Dead The Musical, Rocky Horror Show, Into the Woods, and Escape to Margaritaville*.

The Production Team

E. Wilson (Audio/General Technician) is an audio technician based out of Atlanta. Elijah learned how to do theatre from the excellent Gainesville Theatre Alliance, a joint program between Brenau University and The University of North Georgia, and their mentor Stuart Beamen. In their off time, Elijah enjoys reading, listening to music and walking through nature.

Nick Winkler (Props Supervisor) is thrilled to be joining as the props supervisor at the Winnepesaukee Playhouse this season. Previous experience includes prop master for *Alice and Wonderland* and *The Enlightenment of Percival Von Schmutz* at Adirondack Theatre festival. Other prop coordinator credits include *Significant Other*, *She Loves Me*, *The Nutcracker Ballet*, and *Proof*.



GERMAN MOTORSPORTS

AUDI • VOLKSWAGEN • BMW • MERCEDES • MINI

Authorized BOSCH Service Center



(603) 524-5016 

www.germanmotorsportsusa.com

The Common Man Family – Setting the Stage for Uncommon Dining



Bay Point at Mill Falls • (603) 279-2253

theCMan.com

Church Landing at Mill Falls • (603) 279-5221



Chase House at Mill Falls • (603) 279-3003

OPEN MAY - SEPTEMBER! • (603) 279-3445

About the Authors

STIG ANDERSON (Additional Songs) Anderson achieved fame as the manager of ABBA, the Swedish pop group who dominated the charts throughout the 70s. His real talent lay in songwriting, however, and it was with comic hits such as ‘The Girls Who Know Are Found In The Country’ and ‘Rockin’ Billy’ (a hit in Scandinavia and Holland for Lill-Babs) that Anderson made his name. When Ulvaeus subsequently befriended Benny Andersson of The Hep Stars, it was Stig Anderson who first persuaded the duo to write together, before inviting them both to be partners in Polar Music following Bernhag’s suicide. Determined that ABBA should win the Eurovision Song Contest, Anderson suggested the title ‘Waterloo’ for one of their songs. The group duly won the 1974 contest, and from that point onwards became a bigger and bigger phenomenon, with Anderson retaining a tight control on what would eventually prove to be Sweden’s second most profitable company (after car manufacturer Volvo). He also continued to provide lyrics for the Andersson/Ulvaeus songwriting partnership.

BENNY ANDERSSON (Music and Lyrics) was a member of The Hep Stars, Sweden’s most popular rock band in the 1960’s. During this time, he began composing music. ‘Sunny Girl’ and ‘Wedding’ were huge hits for The Hep Stars. Andersson was part of the group ABBA and composed the music (together with Björn Ulvaeus and Tim Rice) for the musical, Chess. He began collaborating with Orsa Spelmän and recorded three albums deeply rooted in Swedish folk music: Klinga Mina Klockor, November 1989 and Fiolen Min. In 2001, this collaboration led to the formation of Benny Andersson’s Orchestra, a 16-man constellation with vocalists, Helen Sjöholm and Tommy Körberg. Benny Andersson is married to former TV producer, Mona Nörklit. They have one child, Ludvig Andersson. Benny Andersson also has two children from a previous marriage, Peter Grönvall and Helene Odedal. He has five grandchildren: Charlie, Felix, Fabian, Malin and Viola.

CATHERINE JOHNSON (Book) Theatre: Rag Doll, Renegades, Suspension (Bristol Old Vic); Too Much Too Young (Bristol Old Vic and London Bubble); Boys Mean Business, Dead Sheep, Little Baby Nothing (Bush Theatre, London); Shang-a-Lang (Bush Theatre and national tour); and Mamma Mia!(worldwide); Through the Wire and A Letter to Lacey for NT Connections. Creative consultant on ABBA the Museum, Stockholm. Television: ‘Casualty,’ ‘Byker Grove,’ ‘Love Hurts,’ ‘Gold,’ ‘Linda Green.’ Original Screenplays: ‘Rag Doll’ and ‘Where’s Willy?’ (HTV) and ‘Sin Bin’ (BBC), the series ‘Love in the 21st Century’ (Channel 4) and ‘Dappers’ (BBC3). Awards: Catherine has won the Bristol Old Vic/HTV Playwrighting Award, Thames Television’s Writer-in-Residence Award and Thames Television’s Best Play Award and was nominated in 2002 for a Tony Award for Best Musical Book for Mamma Mia! Film: Catherine wrote the screenplay for the Mamma Mia! movie released July 2008.

BJÖRN KRISTIAN ULVAEUS (Music and Lyrics) was born in Gothenburg on April 25, 1945. In the mid-Fifties Björn fell in love with rock’n’roll and skiffle. By the early Sixties he was a member of a folk group called the West Bay Singers. In 1963 they entered a talent contest arranged by Swedish radio. This led to discovery by songwriter and publisher Stig Anderson and his partner, Bengt Bernhag. The band acquired a new name, the Hootenanny Singers, and quickly became one of Sweden’s most popular groups of the Sixties. In 1966, Björn had a chance meeting with Benny Andersson, himself a member of Sweden’s number one pop group, The Hep Stars. They hit it off and wrote their first song together, ‘Isn’t It Easy To Say’. Björn recorded a couple of solo singles in the late Sixties, at which point he also started concentrating more on his collaboration with Benny Andersson. In 1970 the pair started releasing records as a duo and also staged a cabaret show together with their fiancées, Agnetha Fältskog and Anni-Frid Lyngstad. On July 6, 1971, Björn and Agnetha got married. From 1972 and a decade onwards Björn was occupied by his work with ABBA. In 1983 Björn and Benny started writing the musical Chess with lyricist Tim Rice and in May 1986 the musical opened in London’s West End. In 1988 Chess received its Broadway première. Björn and Benny’s most recent musical is Help Wanted, a collaboration with playwright Kristina Lugn and Kristina director Lars Rudolffsson. Björn writes many of the lyrics for the Benny Andersson Orchestra, and has involved himself in the stagings of Mamma Mia!, as well as the 2008 movie version.

Permanent Staff

Thom Beaulieu (Managing Director/Sound Designer) is pleased to be a part of the staff at the Playhouse. An award-winning lighting and sound designer, Thom holds a BFA in Drama from Carnegie Mellon University's School of Drama, as well as an MS in Physics from Georgia State University. He enjoys golf, boating, and poker, and lives in New Hampton with his wife Meredith and daughter Molly.

RJ Bogues (Assistant Technical Director) is excited to be here for his first season as an ATD, as well as his third season at the Playhouse. He is a WCSU alumni originally from small town New Fairfield, CT. He has worked previously as a carpenter in UBU at WCSU, *Spamalot* at Musicals at Richter, and *Godspell* at ACT of CT, with some small technical director credits in *Shrek the Musical* at Musicals at Richter, and *The Nightman Cometh* at CCSU. Randal has also acted on occasion, appearing in shows such as *Glorious!* (Bellhop 1) in the Playhouse's 2021 season. He thanks you for coming, and hopes that you will enjoy what the Winnepesaukee Playhouse's 20th Season has to offer!

Amanda Dickinson (Production Manager) came to the Playhouse from a background in healthcare, having practiced medical Speech-Language Pathology for 18 years. She holds a Bachelor of Science in Speech and Hearing from Elmira College in New York, and a Master of Science in Speech-Language Pathology from The MGH Institute of Health Professions in Boston. After joining the Playhouse in 2017 as a community theatre actor, Amanda went on to work with the Professional Company and the WP Education Department, while also serving for five years on the Winni Players Community Theatre steering committee. Favorite Playhouse credits include *M*A*S*H* (Bridget), *Company* (Assistant Stage Manager), *Steel Magnolias* (Producer, Properties Coordinator), *The Complete Works of William Shakespeare (Abridged) [Revised]* (Wardrobe Supervisor/Running Crew), *The Wolves* (Stage Manager), *Oedipus Rex* (Stage Manager), and *[title of show]* (Stage Manager). Amanda joined the permanent Playhouse staff as Production Manager in 2023.

Donna Findlay (Bookkeeper) joined the Playhouse in 2015 after retiring from a 21 year career at a public utility in Manchester, NH and spending 5 years as a para-educator in the Inter-Lakes School District here in Meredith. She gives unending love and gratitude to Jim, Cortland, and John.

Matthew Hutchens (Technical Director) started at the Winnepesaukee Playhouse originally as a carpenter for 2021 season. He has stuck with us since then as the assistant technical director for 2022 and is now the technical director for 2023. Matthew's goals, as the technical director, are to teach others while also creating beautiful sets for the stage. This will be his first full season as a TD.



Permanent Staff

Cory Lawson (Director of Education and Community Engagement) is a professional actor, director, and theatre educator. He is currently working on his dissertation for his Ph.D. in Interdisciplinary Fine Arts at Texas Tech University, where his research is in theatre festivals and devised works. He has devised and performed in several shows with the Dutch theatre company Orkater, both in Amsterdam and New York City. Cory has also created work with The Living Theatre and helped to found Ready Set Go Theatre, which created the world's first Shakespeare Webisodes. As an actor and director, Cory's work has been seen professionally in New York as well as in regional theatres across the country. He has also appeared on screen in national commercials and various television episodes. Cory holds his MFA in acting from The New School for Drama and a BA in Theatre: Performance and Dramaturgy from Roanoke College. He has served as the Associate Director of Education and Outreach at the Alabama Shakespeare Festival, the Artistic Director of The Burktech Players (a neurodiverse theatre company in Lubbock, Texas), and the Director of The Wallace Weekend Players in Levelland, Texas. Most recently, Cory co-founded and served as the Artistic Director of The Outside In Festival, a new nonprofit Theatre Festival showcasing devised works through the fostering and presentation of both national and international artists. He's thrilled to join the leadership team at the Winnepesaukee Playhouse and is looking forward to meeting and working with everyone in the community.

Timothy L'Ecuyer (he/him/his) (Artistic Director) is thrilled and grateful to begin a new chapter at the Winnepesaukee Playhouse, having previously served as Director of Education from 2014 to 2022. His directing credits at the Playhouse include *The 39 Steps*, *Red*, *Grace and Glorie*, *A Midsummer Night's Dream*, *The Rocky Horror Show*, *Mary's Wedding*, *California Suite*, *The Complete Works of William Shakespeare (Abridged) [Revised]*, and fourteen productions with the Education Department. Mr. L'Ecuyer has BAs in theatre and English from Keene State College as well as an MA and MFA in theatre education and applied theatre from Emerson College. He is a former president of the New Hampshire Educational Theatre Guild, an Equity stage manager, and a Teaching Lecturer in the Music, Theatre and Dance Department at Plymouth State University, where he directed *Our Town*, *An Enemy of the People*, *The Curious Incident of the Dog in the Night-Time*, and *Urinetown*. He has worked with many New Hampshire and Boston area theatres including American Stage Festival, Barnstormers, theatre KAPOW, Peacock Players, StageCoach Productions, Greater Boston Stage Company, the Nora Theatre Company, and Underground Railway Theater. He would like to thank his parents, Peter and Linda L'Ecuyer for (among many other things) supporting the Playhouse in NH Gives this year. He'd also like to thank the following people for their support: Gail Barrett, Laurie Felgate, Daniel Patterson, Mike Richardson, Sharon and Terry Richardson, Renée Speltz, Thomas Staley, and Laura Stephan. timothylecuyer.com

Lesley Pankhurst (Patron and Company Services Director) is one of the founders of the Winnepesaukee Playhouse. Lesley is a graduate of Wellesley College with an MA in Arts Administration and Cultural Policy from Goldsmiths College, University of London. In addition to serving as the Marketing Director of the Playhouse for its first 13 years, she has also designed costumes for many of its productions and has twice been the recipient of the NH Theatre Award for Best Professional Costume Design for *Two Rooms* (2007) and *The Glass Menagerie* (2008). She is the proud mom to her daughter, Sophie, cat Sasha, and wife to the proudly retired, Neil. Much love and appreciation to Lyn Osborne Winter.

98.3 Frank^{fm}™

THE SOUNDTRACK OF THE LAKES REGION!

**The community we service
is the community we support.**

We thank our local communities for trusting us to be there when they need us, and are proud to do our part in supporting them.



Reliable Deliveries | Responsive Service

www.deadriver.com



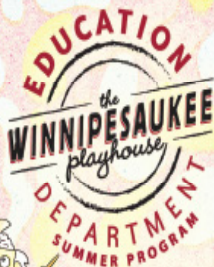
NEW
HAMPTON
SCHOOL

Where Aspiring Artists **TAKE CENTER STAGE**

Whether the arts are a passion or a hobby, there are ample opportunities for professional-level learning at New Hampton School. From the stage to the recording studio, at the ceramics wheel or in the animation lab, our students create in every corner of campus.

 www.newhampton.org





THE WINNIPESAUKEE PLAYHOUSE EDUCATION DEPARTMENT

THEATRE CAMP

FOR AGES 5-14

2023 IS...

THE SUMMER OF THE RIDICULOUS

JOIN US FOR AN UNFORGETTABLE SUMMER!

Students in the Winnepesaukee Playhouse's 2023 Summer Theatre Camp will collaborate creatively, play games, make art, explore music and movement... all while creating and staging original stories celebrating the GOOFY, the SILLY, the NONSENSICAL, and the WACKY. Join us for the SUMMER OF THE RIDICULOUS!



**PECULIAR
PEOPLE**
(July 10 - 14)



**ABNORMAL
ANIMALS**
(July 17 - 21)



**STRANGE
SITUATIONS**
(July 24 - 28)



**QUIRKY
QUESTS**
(July 31 - August 4)



**IMPOSSIBLE
INVENTIONS**
(August 7 - 11)



**UNUSUAL
UNIVERSE**
(August 14 - 18)

CAMPS 1 & 2

STUDENTS AGES 5-11 (ENTERING GRADES K-5)

FULL-DAY, ONE-WEEK SESSIONS
DATES AND THEMES

Week 1:	July 10 - 14	"Peculiar People"
Week 2:	July 17 - 21	"Abnormal Animals"
Week 3:	July 24 - 28	"Strange Situations"
Week 4:	July 31 - August 4	"Quirky Quests"
Week 5:	August 7 - 11	"Impossible Inventions"
Week 6:	August 14 - 18	"Unusual Universe"

THE UPPER CAMP

STUDENTS AGES 12-14 (ENTERING GRADES 6-8)

FULL-DAY, TWO-WEEK SESSIONS
DATES AND THEMES

Weeks 1 & 2:	July 10 - 14 & July 17 - 21	"Peculiar People" & "Abnormal Animals"
Weeks 3 & 4:	July 24 - 28 & July 31 - August 4	"Strange Situations" & "Quirky Quests"
Weeks 5 & 6:	August 7 - 11 & August 14 - 18	"Impossible Inventions" & "Unusual Universe"



NEW
HAMPTON
SCHOOL

We are delighted that our camp program will once again be located on the beautiful campus of New Hampton School at 70 Main Street in New Hampton, NH

REGISTER ONLINE TODAY

Visit us at winnepesaukeeplayhouse.org/education or Scan this Code!
Questions? education@winnipplayhouse.org / 603-279-0333



Not a School-Sponsored Activity



A FULL SERVICE LAW FIRM

Estate Planning and Probate
Business & Non-Profit
Real Estate
Employment & Labor
Municipal

Land Use & Development
Telecommunications
Litigation
Environmental
Utility

COUNSELING INDIVIDUALS, BUSINESSES,
ORGANIZATIONS AND MUNICIPALITIES
THROUGHOUT NEW HAMPSHIRE

DONAHUE, TUCKER & CIANELLA, PLLC

**PROUDLY SUPPORTING THE ARTS
FOR OVER 30 YEARS**

OFFICES IN MEREDITH, CONCORD, PORTSMOUTH, & EXETER, NH

WWW.DTCLAWYERS.COM

1-800-566-0506

Thanks

*Thank you for recognizing that art matters.
It takes everyone working together to continue to create great theatre.*

Directors' Circle

\$25,000+

Anonymous
Anonymous
Paul and Sharon Steinwachs

\$10,000+

Anonymous
The Baker Family
Beth and Rich Compson
Richard and Carol Gerken
Jodie Herbert and Rusty McLear
NH Charitable Foundation
New Hampshire State Council
on the Arts
Anita E. Springer
The Shubert Foundation

\$5,000+

Meredith Rotary
Laura and Gary Stephan

\$2,500+

Gloria and Irving Fox
Ellie Gordon
Greater Lakes Region
Children's Auction
Catherine Mann
Ambassador Paul Speltz and
Renee Speltz
John & Muff Walker

\$1,000+

Anonymous
Ray and Karen Abramson
Marc and Carol Bard
Eden and Nate Bowditch
Mike and Lisa Brien
Jim and Leslie Chapman and Meredith
Whole Living Center
Judy Cookman
Ray Craigie and Pam Smarling
Chuck and Diane Fray
Liz and Bob Gabel
James Whittredge Hill
David and Joanne Jeannette
Gerald Kadish
John and Margie Kreidler
Louise and Sandy McGinnes
Susan and Douglas McLane
Sharon and Tom Messmore
Debra Nash
Kate O'Brien
Neil and Lesley Pankhurst
Barbara Pitsch
John and Cleo Robbins
Jim and Judi Rogato
Jason and Deanne Sargent
Carolyn S Scattergood
Graham and Julia Thomson
Barbara and Gordon Webb
Whitney Werner
Barbara Zeckhausen

to YOU!

Actors' Circle

\$500+

Michael Ames/Half Moon Enterprises, Inc
The Denny Knight Family Fund of the Princeton Area Community Foundation
Kelly Dunn
The Findlay Family
John and Carol Ford
David and Patricia Immen
Paul and Beverly Jaques
Barbara & Chris Maciejewski
Joan and David Martin
Maurice and Rhoda Miller Endowment Fund
New Hampshire Center for Nonprofits
Charles Robert and Eileen Pettie
Mark and Susan Primeau
Gil Schohan
Robert and Anne Shaw
Judy and Steve Siegel
David Stamps and Judith Buswell
Bruce and Betsy Thomas
Annie and Chris Weinmann
Mr. & Mrs. Brian Winslow

\$250+

Anonymous
Anonymous
Tom and Patricia Barrick
Linda and John Browne
James Burke
Bob & Elaine Carangelo
James and Bonnie Doherty
Robert and Eileen Gosselin

Don and Lou Ann Harris
Elizabeth Immen
Joseph Kelaghan
Kathleen Lyons
Ann McClellan
Alan and Carol Metevia
Kaitlin O'Neil
Rosemary Pizzuti
Deborah Seid and Tom Green
Edward Sonn and Sharon Forde
Jacqueline Truesdale
Deborah & Paul Walker
Mark and Kathleen Whitehead
Gregg Williams

\$100+

Anonymous
Anonymous
Anonymous
Anonymous
Amazon Smile Foundation
Christine and Carlos Anderson
Lisa Baroody
Chuck and Sue Bates
Thomas Bengston
David Berard
George Berman
Martin Berman
Roger and Deborah Blake
Tony and Terri Bouchard
Steve and Judy Brown
Jay Buckley
Sarah Bunkley and Richard Smith
Alison and Christopher Casko

Elizabeth Chambers
Jean and Don Clarke
Robert Connors
Abraham and Lynn T. Dadian
Cara David
Constance Dehnel
Amanda Dickinson
Diane G. Dion
Martha Dolben
Ann Donahue
Tami and Mark Donohoe
Carol and Robert Doretti
Denise Doyle
Georgene Fabian
Andrew Fleischmann
Lisa Furlong
Susan Gaines
Dana and Sherry Gardner
Jamie Gegerson
Leo Glasheen
Jean Halfmann
J William Harris
Ira and Lynn Keltz
Bernice and Bernie Kramer
Nancy Kubecka
Maureen Kuharic
Nancy and Newbold LeRoy
Lisa Lovett
John and Carol Low
Peter and Maryann Magoun
Bob Maloney and Bonnie Hunt
Jonathan Marro
William and Stefanie Marsh
Dr. Warren & Annette Mason
Greg & Regis Miller
Peg and John Mongiello
Dr. Noe
Martha Oberstein
David and Fredda Osman

Actors' Circle (continued)

Charlotte Otto	Katie Guilmett	Rachel Chiffer
A Parnes	Betty Heaney	Margaret Christ
Daniel Patterson	Andrew Hendrick	Paul Ciborowski
Celine Perron	Andrea Houghton	Kenneth Cohn
Mark Pettie and Sue Molitor	Gary Jesseman	M Katherine Collins
John and Dorothy Piquado	Constance Kuekan	Gay Daigle
Walter and Christine Powers	The Leighton Family	Robert Davies
Gail Putnam	Marilyn Lezberg	Alexander Davis
Sharon Richardson	Charlene Malek	Beth Day
The Rickenbachs	Jessie Marden	Jack Degange
Mary and Dave Rogers	Monica Michalsky & Tom Stankosky	Rick and Harriet DeMark
Joe Sampson	Sean and Helen Murphy	Gary and Lisa DiMartino
John Soha	Savannah Muzzey	Jean Etter
Larry Spencer	Antoinette Olden	Laura Felgate
Amy Staley	Francis Page	Lisa Fuellemann
Judith Stern	Andrew Pinard	Christina Fuller
Samantha Tella	Michael Portrie	Zach Glennon
Joyce Tyler	Dennis and Kerry Schneider	Sandra Greenberg
Barbara Ulm	Steven B. Schwartz and Paula A. Leonard-Schwartz	Jessica Haggett
John and Karen Warren	Chris Slater	Eric Halvorson
David Wilder	Keith Stevens	Hannaford Community Bag Program
Hazel Zimmer	Sara Tirrell	Judy Hayward
	Lindsay Weiner	Susanna High
	Tim and Anne Whiting	Anne Ingard
	John and Karen Yeigh	Amanda Jennison-Sousa
\$50+		Eliot Johnson
Donna Acox		Chris Jones
Marcy Alkalay		Valerie and Karl Kimball
Kay Anderson		Lynn Kirk
Andy Bedford		Daniel Klingenstein
Karen and Paul Bemis	<i>All Other Gifts</i>	Thad Long
Barbara and Charles Birdsey	Anonymous	Ginnie Lupi
Nancy Brennan	Anonymous	Cassandra Mason
Matt and Carey Cahoon	Carolyn Ames	Deirdre A Meehan
The Cottages of Wolfeboro	The Andrews Family	Michelle Minot
Judith Dean	Catherine Asmar	Richard Mogavero
Alexa Dembiec	Arnold Benson	Suzanne Morrissey
David Ellis and Lee FayEllis	Roberta Brayer	Karen Perlow
Carolyn & Ken Filpula	Catherine and Paul Breen	Margaret Phelan
Bob Foster and Mike Gillis	Lindsey Bristol	Roger Pinsonneault
Mark and Linnea Fraser	Kim Bruneau	Janet Pratt
Elizabeth Geiler	Janice Cardarelli	Marta Rainer
Casey and Drew Gerken	Nancy Carsen	Elizabeth Ricci
Bryan Graf	Susan Cassidy	Ulysses Roebuck
Rebecca Gregoire	Ken Chapman and Carol Lowden	Scott Rosenthal
	Bill Charles	David and Christine Roy
		Stuart W Russell Jr

Robert and Margie Sallies
 Mary Sampson
 Angela Santamaria
 Janine M. Schifino
 John and Linda Shelley
 Jennifer Simon
 Lori Smock-Joyal
 Evan Sohm
 Nancy Stone
 Paul Sullivan
 Kathleen Sweeney
 Clayton Titus
 Sharyn Tondel
 Christa Tsechrintis
 Cynthia Unangst
 Marie Valliere
 Patricia Weston
 Naomi Wheatley
 Shelley Wieler
 Lowell Williams
 Pamela Williams
 Lorna Zammett

*Donation list dated
 6/8/22-6/7/23*

**Thank you to the
 following donors who
 have sponsored new
 chairs for the
 amphitheatre!**

**Barbara and Charles Birdsey
 Eden and Nate Bowditch
 Mike and Lisa Brien
 Steve and Judy Brown
 The Cottages of Wolfeboro
 Alexa Dembiec
 James and Bonnie Doherty
 Ann Donahue
 Kelly Dunn
 Dawson Ellis and
 Delaney Andrews
 Chuck and Diane Fray
 Liz and Bob Gabel
 Richard and Carol Gerken
 Rebecca Gregoire
 James Whittredge Hill
 Charlene Malek
 Jessie Marden
 Sean and Helen Murphy
 Savannah Muzzey
 Kaitlin O'Neil
 Charlotte Otto
 Neil and Lesley Pankhurst
 Carolyn S Scattergood
 Chris Slater
 Ambassador Paul Speltz and Renee Speltz
 Monica Michalsky & Tom Stankosky
 Lydia and Nathan Torr**



**Sponsor a *NEW*
 Amphitheatre Chair!**

**John & Muff
 Barbara and Gordon Webb
 Mr. & Mrs. Brian Winslow
 John and Karen Yeigh
 Barbara Zeckhausen
 Wellesley College Theatre**

Morgenstern Sustainers

Anonymous
 Anonymous
 John and Linda Browne
 J.W. Hill, Consultant
 Sarah Bunkley and
 Richard Smith

Alison and Christopher Casco
 Katie Guilmett
 Ira and Lynn Keltz
 Susan and Douglas McLane
 Kaitlin O'Neil
 Joe Sampson

Jason and Deanne Sargent
 Mary and Dave Rogers
 Graham and Julia Thomson
 John and Muff Walker
 Barbara and Gordon Webb
 Brian Winslow

These are people who participate in the
 continued success of the Playhouse through their recurring
 gifts, and we are so grateful for the ongoing support.

We appreciate your support!

Did you know that in typical years ticket sales only account for about 50% of what it takes to run the Winnepesaukee Playhouse?

Sadly, these have not been typical years recently. But patrons just like you have been so supportive and generous. No gift to the Playhouse is too small, and every donation helps us keep artists employed and audiences entertained throughout the year. If you would like to become a donor, or make an additional donation, your tax-deductible gift will be instrumental in helping to ensure the Playhouse can continue to provide the level of programming you have come to expect.

You can make a donation today by visiting the box office, calling us at (603) 279-0333, or visiting our website: www.winnepesaukeeplayhouse.org

Is it time to take your involvement to the next level?

- You could make a one-time gift of \$100
- Join the Morgenstern Sustainers with a monthly gift of \$10
- Join our Directors' Circle at \$1,000 a year (\$85/month)

You can be the one to inspire, engage, and entertain the community by making a tax-deductible gift. You can mail us a check, use your credit card online or over the phone, or stop by the box office today.

There are even more creative ways to support the Winnepesaukee Playhouse!

Have you ever considered including the Winnepesaukee Playhouse in your will? A gift through your will or estate plan enables you to support our mission and make a difference in the future of the Winnepesaukee Playhouse. Did you know you can use your IRA required minimum distribution to make a tax-free donation to a non-profit like the Winnepesaukee Playhouse? Questions? Speak with your financial advisor, or contact Thom Beaulieu at 603-279-0333 or thom@winniplayhouse.org.



Logos
Branding
Graphic Design & More

LogoFurther.com

ted@logofurther.com

603.562.6909



JOE WALKER
Marketing Services

"Vision without action is a daydream.
Action without vision is a nightmare."

-Japanese Proverb

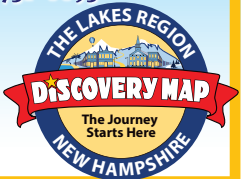
Does your business have vision?

- Strategic business plan development
- Promotional / advertising plans
- Marketing plans
- Non-profit fundraising plans
- Presentations / guest speaking

JoeWalkerMarketing.com
info@joewalkermarketing.com

603-731-0693

Franchisee
Call 603-369-4376
to advertise.



CHRISTOPHER P. WILLIAMS ARCHITECTS, PLLC

PO Box 703 • Meredith, NH 03253 • 603-279-6513
www.cpwarchitects.com



Our award winning firm has provided innovative and environmentally sensitive design solutions since 1984. We specialize in sustainable building practices and offer expertise in incorporating green systems into client projects to enhance and protect the ecosystem, and conserve natural resources. We strive to design buildings that fit into their cultural context and environment.



MIRACLE FARMS

LANDSCAPE CONTRACTORS



Moultonborough, New Hampshire (888)288-8252

Extraordinary landscapes begin here!

- Landscaping
- Maintenance
- Hardscapes
- Mulch/Loam/Compost
- Firewood Dry/Green

603-253-9292

www.miraclefarmslandscaping.com



The Winnepesaukee Playhouse is grateful to the following foundations for their support.



STEINWACHS FAMILY
FOUNDATION



New Hampshire
State Council on the Arts



NEW HAMPSHIRE
CHARITABLE FOUNDATION

The Winnepesaukee Playhouse is supported in part by a grant from the New Hampshire State Council on the Arts & the National Endowment for the Arts.

Our Real Estate Goals are simple....

They're Yours!



Scott Knowles

603.455.7751

scottknowles@metrocast.net

Chris Adams

603.393.7993

adamschris195@gmail.com

Chris Kelly

603.677.2182

chriskelly@baysidenh.net



We have everything you need in real estate

208 Daniel Webster Highway, Meredith, NH 03253

(603) 279-0079

604 Main Street, Laconia, NH 03246

(603) 527-8200

www.baysideplatinumgroup.com





the WINNIPESAUKEE *playhouse* 20th Season Gala

The Winnepesaukee Playhouse
20th Season Gala
Saturday, September 30th, 2023
5:30pm

Join us for dinner and a
performance celebrating
20 years of theatre that
inspires and entertains!

Tickets available at www.winnepesaukeeplayhouse.org

Very Music Very Italian & Very Good!



**Celebrating
34 Years!**

Giuseppe's *Pizzeria & Ristorante*



**This unique and popular restaurant is
one of the Lakes Region's most loved since 1989!**
Serving Award-Winning Gourmet Pizza, Pasta, Seafood,
Steak, Chicken, Veal, Vegetarian, Vegan, Gluten-Free,
Soup, Salads, Desserts, Cappuccino,
Beer, and a fabulous selection of Wine and Spirits!

Lunch and Dinner Daily
Reservations are highly recommended and greatly appreciated!

Located on the corner of Routes 3 & 25
Mill Falls Marketplace, Meredith, NH

Call (603) 279-3313
For Reservations & Take Out
Visit giuseppesnh.com



**LAKES REGION
COMPUTER**

**Celebrating 25 Years in Business!
A ONE STOP TECH SHOP**

Apple • PC • Verizon • Repairs
IT Business Services

Visit Our Retail Store!

- Verizon Authorized Retailer
- Apple Premium Service Provider
- Selling Apple, PC, Phones & Accessories
- Phone and Computer Repairs

IT Business Services Include:

- Computer Systems and Network Installations
- Systems Monitoring and Management
- Backup and Disaster Recovery
- Security and Compliance
- Cloud Solutions
- IT Inventory and Planning
- On-Site and Remote Support
- Wireless Network Planning and Installations
- Security Camera Installations
- Nextiva Business Phone Systems

12 Main Street, Center Harbor, NH 03226

Phone: 603.253.9847 • Website: lakesregioncomputer.com

Follow us!  [lakesregioncomputer](https://www.instagram.com/lakesregioncomputer)  [lakesregioncomputer](https://www.facebook.com/lakesregioncomputer)