

the
WINNIPESAUKEE
playhouse

20TH SEASON



CELEBRATION



*Driving
Miss
Daisy*
By Alfred Uhry



AUGUST 16-26

SPONSORS:

LOVERING
Cars you love from people you trust.

VOLVO
Concord Meredith Nashua

98.3 fm
Frank
NEW HAMPSHIRE'S GREATEST HITS

winnepesaukeeplayhouse.org
603.279.0333 | 33 Footlight Circle, Meredith NH 03253



Meredith Marina

603.279.7921



BOAT RENTALS & Jet-Ski Rentals



Water-Ski
& Tubing
Packages
Available!

Make A Splash!

One of the largest
BOAT RENTAL FLEETS
on Lake Winnepesaukee!



NEW & USED BOAT SALES

Hunter

tió
ADAPT

Sweetwater

Sanpan

Aqua Patio

Premier
Pontoons

MARINE STORE & BOATING ACCESSORIES

603-279-7921



BOAT SALES • BROKERAGE • VALET • SERVICE • RENTALS • STORAGE

2 Bayshore Drive, Meredith, NH • Meredith Bay • Lake Winnepesaukee



www.meredithmarina.com

Board of Trustees

Renee Speltz
Chair
Retired Mental Health Counselor and
Consultant

Bill Bald
Vice Chair
President
Melcher and Prescott Insurance

Raymond Abramson, CPA
Treasurer
Owner
Abramson & Company, LLC

Kaitlin M. O'Neil
Secretary
Attorney
Normandin, Cheney & O'Neil, PLLC

Members at Large

Eden Unger Bowditch
Author
Plymouth State University

Julie Hirshan Hart
Editor
The Laconia Daily Sun

Lesley Pankhurst
Co-Founder and Patron and
Company Services Director
The Winnepesaukee Playhouse

Sean C. Sullivan, CPA
Business Consultant

Kathleen Sweeney, CPA
Owner
Kathleen Sweeney CPA

Julia Thomson
Legal Consultant

Brian Winslow
Director of Community Relations
Granite VNA

the WINNIPESAUKEE playhouse

Permanent Staff

Artistic Director.....Timothy L'Ecuyer
Managing Director.....Thom Beaulieu
Patron & Company Services Director.....Lesley Pankhurst
Dir. of Education & Community Engagement.....Cory Lawson
Production Manager.....Amanda Dickinson
Technical Director.....Matthew Hutchens
Assistant Technical Director.....RJ Bogues
Bookkeeper.....Donna Findlay

Professional Season Company

Scenic Charge Artist.....Gwen Elise Higgins
Electrics Supervisor.....Libby Hinshaw
Props Supervisor.....Nick Winkler
Scenic Carpenter.....Francisco Fialho
Audio/General Technician.....E. Wilson
Costume Assistant.....Melody Carter
Wardrobe Supervisor.....Natalya Salvati
Camp Administrator.....Becky Gregoire

Proud Members of

NEW HAMPSHIRE

PROFESSIONAL THEATRE

ASSOCIATION

WWW.NHPTA.ORG INFO@NHPTA.ORG

The Winnepesaukee Playhouse
33 Footlight Circle, Meredith NH 03253
Tel. (603) 279-0333

www.winnepesaukeeplayhouse.org

For Your Information

Please turn your cell phone and any other electronic devices completely off. Leaving them on silent or vibrate may interfere with our communication systems and interrupt the flow of the performance.

Please refrain from photography or recordings of any kind, as this violates our royalty agreements.

Please note that if you must, in an emergency, use the restrooms during the performance, our House Manager will return you to your seat at an appropriate break in the performance.

Please be sure you can hear us! For our theatre patrons who have experienced varying degrees of hearing impairment, please take advantage of our state-of-the-art **Assisted Listening System**.

For indoor performances: If you are a hearing aid user who has a tele-coil function in your hearing aid you will be able to access our system directly after turning on that function. You may need to contact your hearing aid provider to inquire about the tele-coil in your particular hearing aid and ensure that it has been activated and instructed on how to turn it on when you are in the theatre. For patrons without tele-coil hearing aids, we have a limited number of headsets available on a first-come, first-served basis. Please see the box office if you would like to use one.

The indoor Assisted Listening System is made possible by a generous donation from The Maurice and Rhoda Miller Endowment Fund.

For outdoor performances: All actors will be amplified. If you'd like further amplification, headsets are available on a first-come, first-served bases from our reception table.

Please keep in touch! Visit our website at www.winnepesaukeeplayhouse.org to join our email list. You can also follow us on Facebook, Instagram, and Twitter.

Dear Friends:



On behalf of Managing Director Thom Beaulieu, myself, and everyone at the Winnepesaukee Playhouse, thank you for joining us for our 20th season! All three departments of the Playhouse—professional, community, and education—have fantastic things planned for 2023 and I am honored to have the privilege of helping to shepherd all of them to the stage in my first season as Artistic Director.

Marking our 20th season is an opportunity for all of us to reflect on the path that brought us here. It would be impossible for me to do so without mentioning the deep gratitude I have for the unflagging effort of my predecessor, Founding Artistic Director Neil Pankhurst. Working with him for the past nine years has prepared me to step up into this position in a way that nothing else could. I am additionally grateful for his continued support and can't wait to welcome him back to write and direct this year's holiday Panto *Cinderella*.

This season revives some Playhouse favorites: American classics, a smash hit ABBA jukebox musical, the poignant story of the friendship between a pig and a spider that many of us grew up loving, and more. It also honors and extends the Playhouse's long-standing tradition of bringing you an exciting variety of work transcending time, geography, and genre. Bringing all of this to life for you are talented teams of theatre artists, some of whose work you already know and love as well as extraordinary professionals, students, and community members sharing their work with us for the first time.

An anniversary like this is also an opportunity to turn our eyes to the future and think about what might be. This year's transitions in leadership, particularly the addition of Amanda Dickinson and Cory Lawson to our staff, have already had invigorating effects. In the coming months and years, we will also shake out the cobwebs by bringing you new programming, new initiatives, and new ways of bringing epic storytelling to our intimate spaces. We will also rededicate ourselves to what works best.

Whether you are a longtime Playhouse supporter or are joining us for the first time, we are thrilled that you have chosen to be part of our community. We are more excited than ever to walk into the future together.

--Timothy L'Ecuyer
Artistic Director

MOULTON FARM

Meredith, N.H.



Farm Market Open Daily

Mid-March Through Dec. 31

DRIVEWAYS • WALKWAYS
PARKING LOTS • ROADS



603-279-1499

www.bryantpaving.com



FIND YOUR ESCAPE!

DOWNTOWN MEREDITH

603 279.3905

312 Daniel Webster Hwy

DOWNTOWN LACONIA

603 409.6756

630 Main St.

www.innisfreebookshop.com

KATHLEEN E. SWEENEY

CERTIFIED PUBLIC ACCOUNTANT

P.O. Box 1259
Center Harbor, NH 03226
(603) 253-4011
Fax (603) 253-4051

P.O. Box 1187
North Conway, NH 03860
(603) 356-7036
Fax (603) 733-5250

ksweeney@metrocast.net
www.kathleensweeneycpa.com

Thank you for voting us best in the lakes region



Dependable and timely Oil, Diesel and Propane deliveries from Loudon to Lincoln and Alexandria to Alton Full Emergency and Installation services

CELEBRATING
75 YEARS
1946-2021

Heating Oils
Propane
Diesel
24-Hour Emergency Service
Boiler Installations
Preventive Maintenance

Family Owned & Operated Since 1946 • (603) 524-1417 • www.foleyoilco.com

Mello
Moose
COFFEE HOUSE



136 Daniel Webster Hwy, Meredith
(603) 677-7037

Great coffee, breakfast sandwiches, and
fresh baked goods to start your day!


TWIN BARNS
BREWING CO

194 Daniel Webster Hwy
Meredith



**Bring Ticket Stub To
Twin Barns for 50%
off apps**

*We are thrilled to support
The Winnipisaukee Playhouse*

Temple B'nai Israel
Laconia, NH



Temple B'nai Israel



TBINH.ORG

Prescott  *Farm*
Environmental Education Center




*After the play—
we'll help you find ways to play
outside!*



928 White Oaks Road, Laconia
603.366.5695 prescottfarm.org

Before the Play
enjoy dinner at

 **CANOE** or 
STEAKS & SEAFOOD

253-4762
Center Harbor

524-9373
Lakeport

www.magicfoodsrestaurantgroup.com

Supporting the Arts
LAURA & GARY STEPHAN

In loving memory
 Dorothy Marie Schrader
 Gerald Lewis Schrader



The Laconia Daily Sun Don't Miss a Day!

Read online at laconiadailysun.com

sign up for daily newsletters • home delivery call (603)737-2020



Lakes Region
FENCE

Proudly
 Supporting
 The
 Winnepesaukee
 Playhouse

Residential Fencing Specialists
 FULLY INSURED



SINCE 2005

www.LRFence.com

222 Country Club Rd
 Gilford, NH 03249

Call Us for a Free
 Estimate!
 603.524.6061

BRAVO WINNI PLAYHOUSE!



patrickspub.com • 603) 293-0841

18 Weirs Rd Gilford, NH

HART'S
 TURKEY FARM
Restaurant



233 Daniel Webster Hwy
 Meredith, NH 03253
 603-279-6212

hartsturkeyfarm.com

Regular
 Children &
 Mini
 Menus
 Available
 Gift Shop
 Catering

IRWIN
 AUTOMOTIVE GROUP

603-524-4922 | irwinzone.com

Serving New Hampshire Since 1951

59 Bisson Avenue Laconia, NH

446 Union Avenue Laconia, NH



2023 SHOW LISTINGS

SPRING

March 24-26: Charlotte's Web

Adapted by Joseph Robinette, Based on the book by E.B. White

Radiant! Terrific! Some pig!

All your favorite characters from E.B. White's classic children's novel come to life on the stage as Wilbur, a runt of a pig, ends up under the protection of an extraordinary spider, Charlotte. Charlotte saves Wilbur's bacon with the magical words she weaves in the web while teaching him the true meaning of friendship.

Sponsored by:



NEW
HAMPTON
SCHOOL

April 14-16: Twelfth Night

By William Shakespeare

If music be the food of love, play on!

A shipwreck. Separated twins. Mistaken identity. Unrequited love. Lost in an unfamiliar land, quick-witted Viola disguises herself as a man and finds herself in the middle of an explosive love triangle in one of Shakespeare's most beloved romantic comedies.

Sponsored by:



NEW
HAMPTON
SCHOOL

April 27-30: Ken Ludwig's Lend Me a Tenor

A screwball comedy from the master of farce!

When a world-renowned opera star ends up passed out in a hotel room before he is due on stage, a lowly office assistant is persuaded to don his costume and go on in his place. But when our star revives, hilarity ensues. Mix two tenors in two identical costumes with a singing bellhop and a seductive soprano, and you get chaos of operatic proportions.

Sponsored by:



THE *Winni*
PLAYERS

2023 SHOW LISTINGS

PROFESSIONAL SEASON

June 15-July 8: Mamma Mia!

Music and Lyrics by Benny Andersson and Björn Ulvaeus and some songs with Stig Anderson,
Book by Catherine Johnson , Originally Conceived by Judy Crayme

The global smash-hit musical returns to the Playhouse!

Over 60 million people all around the world have fallen in love with the characters, the story, and the music that make **Mamma Mia!** the ultimate feel-good show! A mother. A daughter. Three possible dads. And a trip down the aisle you'll never forget!

Sponsored by:

Delivering on A promise.™



July 12-22: SHOUT! The Mod Musical

Created by Phillip George & David Lowenstein

The music, the fashion, and the freedom of the swinging 60s!

This smashing revue tracks five groovy gals as they come of age during those liberating days that made England swing! Join this fast-paced journey through infectious and soulful pop anthems and ballads like "To Sir With Love," "Downtown," "You Don't Have to Say You Love Me," "Son of A Preacher Man," and "Goldfinger." Groovy, baby!

Sponsored by:



July 27-August 12: Agatha Christie's Murder on the Orient Express

Adapted by Ken Ludwig

All aboard for a trip you'll never forget!

Just after midnight, a snowdrift stops the Orient Express in its tracks. The luxurious train is surprisingly full for the time of the year, but by the morning there is one fewer passenger. An American tycoon lies dead in his compartment, stabbed eight times, his door locked from the inside. Isolated and with a killer in their midst, the passengers rely on detective Hercule Poirot to identify the murderer – in case they decide to strike again.

Sponsored by:



2023 SHOW LISTINGS

PROFESSIONAL SEASON

August 16-26: Driving Miss Daisy

By Alfred Uhry



An open road of possibility

Uhry's portrait of an aging Southern woman and the Black man hired to be her driver. What starts out as indifference and disdain soon turns into a relationship of mutual trust and compatibility as they break down each other's defenses and come to realize that friendship comes in all different packages.

Sponsored by:

LOVERING
Cars you love from people you trust.

VOLVO
Concord Meredith Nashua

98.3 fm.
Frank

August 31-September 9: Sweeney Todd, The Demon Barber of Fleet Street

Music and Lyrics by Stephen Sondheim. Book by Hugh Wheeler. From an adaptation by Christopher Bond

A deliciously gruesome musical!

Attend the tale of the vengeful barber and the scheming pie shop owner who have been haunting the stage since the show's legendary Broadway debut in 1979. **Sweeney Todd** is a tale of love, lust, revenge, and murder set amongst the smog of Victorian England. One of the most deliciously inventive scores of all time, it will leave you hungry for more!

September 14-24: The Glass Menagerie

By Tennessee Williams

"In memory, everything seems to happen to music."

One of the enduring classics of the 20th century, **The Glass Menagerie** is a semi-autobiographical play from one of this country's most beloved playwrights. This memory play is a portrait of a young man attempting to understand the difficult mother and delicate sister who tether him to home. A powerful and haunting piece of theatre.

Sponsored by:

THE
FITNESS
Edge
Health Club

2023 SHOW LISTINGS

FALL

October 20-29: Corduroy

Based on the books by Don Freeman, Adapted for the stage by Barry Kornhauser

"I like you the way you are."

When the lights are dimmed and the doors are locked, a department store comes to life. Corduroy, the stuffed bear with the green overalls, must outsmart the Night Watchman as he waits for his human friend, Lisa, to return. With his missing button, Corduroy may not be perfect, but Lisa proves that sometimes all you need is a friend.

November 8-12: Fiddler on the Roof

Book by Joseph Stein, Music by Jerry Bock, Lyrics by Sheldon Harnick

To Life!

One of the most popular musicals of the 20th century, **Fiddler on the Roof** is the Tony Award-winning sensation that introduced the world to favorite songs like "Tradition!", "Sunrise, Sunset," and "If I Were a Rich Man." Milkman Tevye's world is turned upside down by both the changing political landscape in his home country, and the changing ideals of a younger generation. Set in the area now called Ukraine, today this nearly 60 year old musical resonates in a newly relevant way.



November 30-December 3: Miracle on 34th Street:

A Live Radio Play

Lux Radio Script Adapted by Liz Zazzi

A holiday classic!

The Winni Players annual live radio drama is back! When a department store Santa claims he's the real Kris Kringle, his case gets taken all the way to the Supreme Court. A little girl's belief makes the difference in the 'miracle.' With live Foley effects and a host of on-air personalities, the radio play is an annual highlight!

Sponsored by:



PLATINUM GROUP
— AT RE/MAX BAYSIDE —

2023 SHOW LISTINGS

WINTER

December 15-31: Cinderella: A Traditional English Panto

By Neil Pankhurst

Don't let the clock run out before you see the biggest panto of them all!

Your favorite family holiday event is back! Filled with bright lights, big costumes, dynamic dancing, silly slapstick for the littles, innuendo for the adults, and a double entendre or two (or three!), our annual English Panto is a treat for ages 3 to 103! "Boo" the villain, "cheer" the hero and join us for an English tradition that has been a holiday staple since the nineteenth century!

We're proud to bring a little old England to New England!



The Winnepesaukee Playhouse Education Department promotes the developmentally appropriate acquisition of theatrical skills, fosters a life-long appreciation of the technique, history, and literature of theatre and its ancillary fields of study, and—above all—seeks to inspire its students to use theatre as a tool to develop empathy, with which they may explore and come to better understand the world.



The Winni Players Community Theatre uses live theatre to provide its members with opportunities for artistic expression, personal growth, and friendship.

We build community through theatre.

NORMANDIN, CHENEY & O'NEIL, PLLC
ATTORNEYS AT LAW

Experience you can rely on. Advice you can trust.

*Wills, Trusts and
Estate Planning*

*Real Estate and
Land Use*

*Commercial and
Corporate Law*

Injury Law

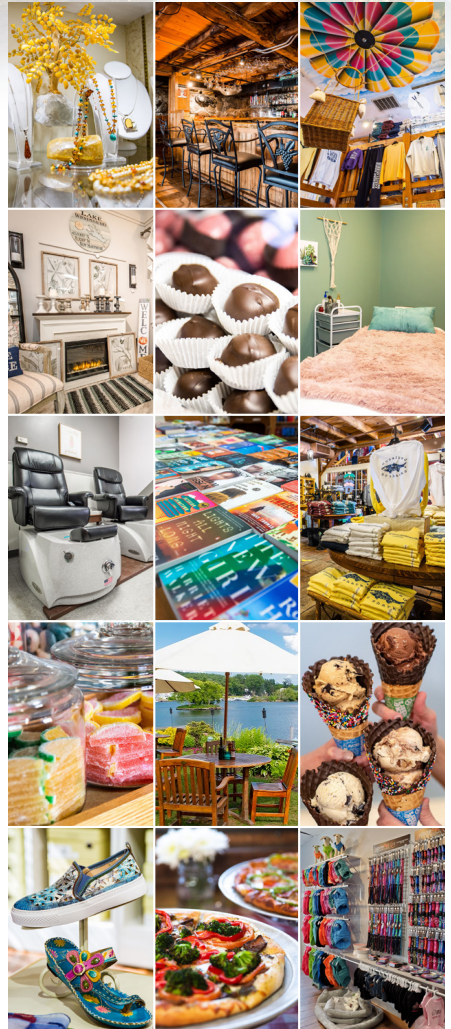
*Civil and Criminal
Litigation*

603-524-4380
(or 1-800-529-0631)

www.ncolaw.com

213 Union Avenue
P.O. Box 575
Laconia, New Hampshire
03247

SHOP. DINE. EXPLORE.



Lakes Region's Premier Shopping Destination

Unique Marketplace Shops
5 Distinctive Restaurants • 4 Inns
Boardwalk, Park & Sculpture Walk
Friday Night Music - July & August

millfalls.com/shop • Routes 3 & 25 Meredith, NH



GOLDEN VIEW
HEALTH CARE CENTER
A Non-Profit Community

The Retreat at Golden View

Short-stay rehab conveniently located in the Lakes Region



You have a choice! Golden View works with hospitals throughout New England, so no matter where your hospital stay may be, you can recover close to home!

The Retreat features private suites with private bathrooms, as well as a tailored therapy plan. We are contracted with many private insurances and Medicare.

To learn more or prebook your stay, please call our admissions department at 279-8111.

Assisted Living • Long-Term Living • Short-Stay Rehab

Meredith, NH • 279-8111 • www.GoldenView.org •



MALONE, DIRUBBO & COMPANY, P.C.
CERTIFIED PUBLIC ACCOUNTANTS

Serving Businesses & Individuals For Over 35 Years

Three Convenient Locations

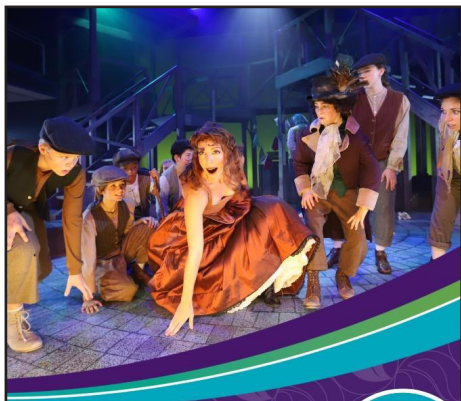
501 Union Avenue, Laconia 603-528-2241
64 Franklin Street, Franklin 603-934-2942
9 West Street, Lincoln 603-745-3121

www.mdccpas.com

Member AICPA, Private Companies Practice Section, NH Society of CPAs

the
WINNIPESAUKEE
playhouse

FOLLOW US ON



Proud to partner
with Winnepesaukee
Playhouse to provide
another season of
spectacular performances.

Named
Best-In-State
Banks for NH
by Forbes
Magazine
2022



FSB
Franklin Savings Bank
FSBNH.BANK



#HappyUp at The Studio!

Experience the Lakes Region's most joyful and
eclectic shopping experience for yourself!



598 Main Street, Laconia, NH
603-524-8008 • thestudionh.com



**FIRESIDE INN
& SUITES**

Lake Winnepesaukee
Year Round Comfort - Grab & Go Breakfast
Indoor Pool & Hot Tub - Outdoor Pool seasonal

ENJOY the Show!!

603.293.7526 / FiresideinnGilford.com

PLAN FIRST.

Period.

It's about your plan. It's about you.

To have a conversation about your financial plan with an advice-only guy, give me a buzz.

If you're in the trades and own a business—even better.

No suits or ties will be worn to this meeting. And there will be Dad jokes.

36 Country Club Road, Suite 926 – p:603-524-4994 – joel@planfirstperiod.com – www.planfirstperiod.com

Advisory Services through Cambridge Investment Research Advisors, Inc., a Registered Investment Advisor. Cambridge and PlanFirst, LLC are not affiliated.



Altrusa Int'l of
Laconia, NH, USA

Become a member!

*Join with others who are
creating better communities!*

www.altrusalaconia.org
altrusalaconia@gmail.com
Follow us on Facebook



Gilford Home Center
A SMALLER BOX WITH A BIGGER VALUE

gilfordhomecenter.com
603-524-1692
Hours, Mon. - Fri. 7:00 - 5:00
Sat. 8:00 - 3:00
Sun. 9:00 - 1:00



Mon.-Fri. 7:30-5:00, Sat. 7:30-3:00
and Sun. 7:30-1:00
gilfordtruevalue.com
603-524-5366



**LOVERING
AUTO GROUP**

Meredith



4.9



MISIASZEK
TURPIN



ARCHITECTS

MISIASZEKTURPIN.COM

residential | non-residential | historic preservation

The Winnepesaukee Playhouse Presents
the Playhouse Professional Company in

Driving Miss Daisy
by Alfred Uhry

Driving Miss Daisy is presented by special arrangement with
Broadway Licensing, LLC, servicing the Dramatists Play Service
Collection. (www.dramatists.com)

Driving Miss Daisy was first produced
Off-Broadway by Playwrights Horizon
New York City, in 1987

It was subsequently produced by
Jane Harmon/Nina Keneally, Ivy Properties, Ltd./Richard
Frankel/Gene Wolsk/Alan M. Shore and Susan S. Myerberg
in association with Playwrights Horizons, Off-Broadway in 1987

Production Team

Director.....Paul Mroczka
Stage Manager.....Annie Jenkins
Scenic Designer.....Gwen Elise Higgins
Costume Designer.....Andrew Burns
Lighting Designer.....Libby Hinshaw
Sound Designer.....Thom Beaulieu

Thank you to:
Community Players of Concord, Petal Pushers Farm,
Plymouth State University Department of Music, Theatre,
and Dance

You are welcome to visit the bar before and after the
performance. Please note, state liquor laws prohibit us from
allowing you to bring alcoholic beverages to the
amphitheatre. They must be consumed on the deck or in
the picnic area. Thank you.

The Cast

Daisy Werthan.....Donna Schilke

Hoke Coleburn.....Elliott Young

Boolie Werthan.....Will Nash Broyles

The play takes place from 1948 to 1973,
mostly in Atlanta, Georgia.

Driving Miss Daisy
runs approximately 1 hour and 45 minutes with
no intermission.

The Common Man Family – Setting the Stage for Uncommon Dining



Bay Point at Mill Falls • (603) 279-2253

theCMan.com

Church Landing at Mill Falls • (603) 279-5221



Chase House at Mill Falls • (603) 279-3003

OPEN MAY - SEPTEMBER! • (603) 279-3445

From The Winnepesaukee Playhouse Education Department...

Driving Miss Daisy has become a classic, beloved play that has continued to be a popular choice for theatres all around the country since it was written in 1987. Set in Atlanta against the backdrop of the American South in the mid-20th century, *Driving Miss Daisy* resonates deeply with its exploration of friendship, societal evolution, and our ability to change.

Miss Daisy and Hoke's story unfolds across two and a half decades, capturing the shifting dynamics of a country grappling with racial tensions and the sweeping winds of the Civil Rights Movement. In an era where divisions seemed insurmountable, *Driving Miss Daisy* demonstrates the profound impact of compassion and understanding in bridging chasms that once seemed uncrossable. The play reminds us that, while prejudice can be deeply ingrained, it is through our personal connections that these barriers can be dismantled. By examining the themes of aging, vulnerability, and the fear of losing autonomy, the playwright, Alfred Uhry, highlights concerns that are at the heart of being human, regardless of race. These are shared fears and experiences that Uhry uses to encourage us to introspect and challenge our biases, prompting a reconsideration of our thoughts about race, age, or any trait we might use to "other" someone else. The play's powerful depiction of the universal need for companionship and understanding remains a call to action for empathy in the face of adversity. It is also a reminder that we can change—a message as necessary today as when it was written.

In a time when dialogue surrounding racial harmony, empathy, and the impact of personal connections is more crucial than ever, *Driving Miss Daisy* invites us to traverse the road of understanding together. Its exploration of the capacity for growth, even amid the most challenging circumstances at the most difficult times, reminds us that our shared humanity unites us despite our differences.

That is why so many theatres continue to produce *Driving Miss Daisy* on their stage. The play's ability to ignite conversations across generations and inspire personal and societal reflection makes it not just a story of the past but a mirror reflecting our present. How far have we come? How much further do we have yet to go? A simple look at modern headlines might hold some answers.

The appeal of *Driving Miss Daisy*, though, is that its message is not about all the difficult work still to be done, but rather the hope that it **can** be done. That change is possible. That the desire for friendship and connection are far more potent than prejudice and hate.

We are thrilled that you are joining us for this show. I hope it leaves you optimistic while sparking great conversations during the car ride home.

Cory Lawson
Director of Education and Community Engagement

Martin Luther King Jr. Facts:

Full name: Michael King Jr.

Born: January 15th, 1929.

Hometown: Atlanta, Georgia.

Occupation: Minister and activist.

Died: April 4th, 1968.

1. At birth, he was named Michael King, but his father later changed his name to Martin Luther King Jr.
2. Martin Luther King Jr. had his first experience of segregation at just six years old, when he was told he wasn't allowed to play with his white friend anymore – his friend's father wouldn't allow it!
3. His first significant role in the Civil Rights Movement came in 1955, after an African American woman, Rosa Parks, was arrested for refusing to give up her seat to a white man on a bus. This sparked outrage in the African American community, and King helped to organize a boycott of the city's buses. After 381 days of protest, a court finally ruled that such segregation laws should no longer be recognized.
4. King was a great believer in peaceful protest, inspired by the Indian activist Mahatma Gandhi. His protests used no-violent tactics, even when the protesters themselves were met with violence from the police.
5. In 1963, King gave his famous "I Have a Dream" speech at a famous rally called 'March on Washington.' Over 250,000 people gathered in the country's capital to hear King and other activists speak about the importance of civil rights.
6. In 1964, 99 years after the abolition of slavery, the Civil Rights Act was passed, outlawing racial segregation and discrimination in the USA.
7. In October 1964, King won the Nobel Peace Prize. He was told over the phone while he was in bed suffering from exhaustion.
8. Tragically, Martin Luther King Jr was assassinated in 1968 in Tennessee, where he had given a speech the day before. He was standing on the balcony of his hotel when he was shot. James Earl Ray was convicted of murder and spent the rest of his life in prison, despite claiming to be innocent. Ray died in 1998.

PAVING OUR WAY TO THE FUTURE!



BETWEEN NOW AND SEPTEMBER 2024
the Winnepesaukee Playhouse needs to **raise \$200,000** for important improvements to our campus. Your generous donation will help us to resurface campus roadways and parking lots for a safer, more enjoyable theatre experience!

Donate online at www.winnepesaukeeplayhouse.org!

**THANK
YOU FOR
YOUR
SUPPORT!**

The Cast



Will Nash Broyles (Boolie Werthan) is thrilled to return to the Winnepesaukee Playhouse this season in *Murder on the Orient Express* and *Driving Miss Daisy* having appeared here last season in *The Mousetrap* and *Robin Hood*. Other credits include Joe Pitt in *Angels in America* (Madison Lyric Stage), Pippin in *Pippin* (Greenbrier Valley Theatre), Carl Bruner in *Ghost* (Alhambra), and Mikey Thomas in *Shear Madness* (Sharon Playhouse). Many thanks to Tim and Lesley for bringing him back this year. Love, love, and more love to Michael and Daphne!



Donna Schilke (Daisy Werthan) This one's for Elaine. Previously at the Winnepesaukee Playhouse: *Guess Who's Coming to Dinner* (Christina Drayton), *California Suite* (Hannah/Diana/Gert), *The Foreigner* (Betty Meeks), *Noises Off* (Dotty/Mrs. Clackett), *Barefoot in the Park* (Mrs. Banks), *Butterflies are Free* (Mrs. Baker), and *The Importance of Being Earnest* (Miss Prism). Some favorite roles played elsewhere: Daisy Werthan (*Driving Miss Daisy*); Aunt March/Mrs. Kirk (*Little Women*), Ida Straus (*Titanic: The Musical*), Mrs. Higgins (*My Fair Lady*); Sil (*20th Century Blues*); Witch/Old Woman/Gentle Woman (*Macbeth*), Anna/Hymen (*As You Like It*), Mrs. Quince (*A Midsummer Night's Dream*); Julia (*Lend Me a Tenor*); Mrs. Potts (*Beauty and the Beast*). Others: National Tour- *Magic Treehouse: The Musical*; *Sight & Sound* (Jonah; Samson), and numerous other shows, commercials, film, print, and voice projects. Many thanks to Timothy and the WP for this opportunity; my beloved family - blood and otherwise, and to the One who makes all things possible!



Elliott Young (Hoke Coleburn) A native of Cincinnati, OH, Young is happy to make his debut at the Winnepesaukee Playhouse. An alumnus of Wright State University with a BA in Communication Studies, his current base/acting market is Atlanta, GA. His recent stage/film/commercial credits include: *Fences* (Onstage Atlanta), *Skeleton Crew* (Merely Players Presents), *The Voices of Donny Hathaway*, *The Face of Emmett Till*, *Friends Like Sisters*, *Freaky Profiling*, *Shirley*, *Gotcha*, *Godsend*, and more.

 **GERMAN
MOTORSPORTS**

AUDI • VOLKSWAGEN • BMW • MERCEDES • MINI

Authorized BOSCH Service Center



(603) 524-5016 

www.germanmotorsportsusa.com

About the Author

Alfred Uhry is the only playwright ever to win the Triple Crown: an Oscar, a Tony, and a Pulitzer Prize. He began his career as a lyric writer under contract to the late Frank Loesser. In that capacity he made his Broadway debut in 1968 with *Here's Where I Belong*. He then wrote the book and lyrics for *The Robber Bridegroom* and was nominated for a Tony Award. He followed that with five re-created musicals at the Goodspeed Opera House. In 1987 his first play, *Driving Miss Daisy*, opened at Playwrights Horizons Theatre in New York. It was subsequently moved to the John Houseman Theatre, where it ran for over 1300 performances. The play earned many awards, including the Outer Critics Circle Award and the 1988 Pulitzer Prize for Drama. For the film version, he won an Academy Award and the film itself was voted Best Picture of the Year. Other films include "Mystic Pizza" and "Rich in Love." Mr. Uhry's second play, *Last Night of Ballyhoo*, which was commissioned by the Cultural Olympiad for the 1996 Atlanta Olympics, opened on Broadway in February 1997. It has been chosen Best Play by the American Theatre Critics Association, The Outer Critics Circle, and the Drama League, and the 1997 Tony Award. He worked on *Parade*, a musical play about the Leo Frank case, with music and lyrics by Jason Robert Brown and directed by Harold Prince. His film projects include a new adaptation of "Dodsworth" for Time Warner, "Cut Flowers" for Miramax, and "Taft," commissioned by Morgan Freeman.

THE FITNESS
Edge

WE OFFER
LIVE & ZOOM
CLASSES

BOOT CAMP PLUS | INDOOR CYCLING | TOTAL BODY TONE
BARRE | POSTURE | YOGA | ZUMBA | TRX AND MORE!

169 DANIEL WEBSTER HIGHWAY
MEREDITH NH

78 WHITTIER HIGHWAY
MOULTONBOROUGH NH

OFFERING NH LAKES REGION 2 CONVENIENT HEALTH CLUB LOCATIONS!

(603) 279-0411
WWW.THEFITNESSEDDGENH.COM

**Donations come in all
shapes and sizes.**

Please consider a gift from our Amazon Wish List.
www.winnipesaukeeplayhouse.org/amazon-wish-list

The Production Team

Andrew Burns (Costume Designer) is an upcoming third-year MFA Costume Design and Technology Candidate at the University of South Carolina. He graduated with his BA in Theatre from Florida State University in 2019 and continued to pursue theatre professionally post graduation. Andrew had the opportunity to work with the Cape Playhouse in Dennis, MA as a wardrobe apprentice for their summer 2019 season, and with Florida Repertory Theatre in Fort Myers, FL as a costume intern for their 2019-2020 season. He now attends the University of South Carolina under the mentorship of Kristy Leigh Hall and will obtain his masters degree in May 2024. Previous costume design credits include: *Wonderland* (Ballet), *Small Mouth Sounds*, *This is Our Youth*, and *A Connection is Made* choreographed by André Megerdichian (University of South Carolina), *Dog Sees God* (Out Front Theatre Company, Atlanta). He is excited to make his design debut at the Winnepesaukee Playhouse joining the team for three productions this summer. Special thanks to his family and friends for their love and support. Instagram: @a.burnscostumes

Melody Carter (Costume Assistant) is new to the Winnepesaukee Playhouse this year. The past several years they have been the wardrobe lead/stitcher at the Springer Opera House in Columbus, GA. She is also a student at Columbus State University. A few of her favorite shows that she has been involved with are *Cinderella*, *The Color Purple*, and *The Bodyguard*. She is very excited to share/learn in her first season with the Winnepesaukee Playhouse.

Francisco Fialho (Scenic Carpenter) is a newly graduated theatre technician/carpenter. Francisco has built a number of sets, previously working on shows in Keene State College as both a shop hand and run crew.

Gwen Elise Higgins (Scenic Designer/Scenic Charge Artist) is a multi-hyphenate theatre artist from the Midcoast of Maine working throughout New England. Graduated from University of New Hampshire with a BA in Theatre. A lifelong learner and artist experimenting in countless mediums with varying degrees of success and welcome failure. Painter, designer, actor, etc. www.gehiggins.com

Libby Hinshaw (Lighting Designer/Electrics Supervisor) is a recent graduate with a focus in lighting tech and design. She previously designed *After Jane* (Co-Designer), *Silent Sky*, *Los Vendidos*, and *Bamboo Box* at The Janet Kinghorn Bernhard Theater. Her assistant design credits at the JKB Theater include *Heddatron* and *The Sor Juana Project*. Some of her technical credits are *Rent* at A Contemporary Theater of Connecticut; *The Place That Made You*, *Eurydice*, *And Baby Makes Seven*, *The Chaparral*, *John Proctor is the Villain*, *Somewhere: A Primer for the End of Days*, *Springfest*, *Radium Girls*, *The Harvest*, and *The Hour We Knew Nothing of Each Other* at the JKB Theater. Libby holds a BS in Theater and a BA in Psychology from Skidmore College.

Annie Jenkins (Stage Manager) is happy to be working her first season with the Winnepesaukee Playhouse! New York credits include *First Daughter Suite* (The Public Theater); *Wolf in the River* (The Flea Theater world premiere); *Merrily We Roll Along, Swing!* (NYU Tisch New Studio on Broadway). Regional credits include *Disney's The Little Mermaid*, *Disney's Mary Poppins*, *King Lear*, and *As You Like It* (The Alabama Shakespeare Festival); *Gloria*, *Tigers Be Still*, and *Grounded* (Outpost Repertory Theatre). She is a graduate of the University of California at Irvine.

The Production Team

Paul Mroczka (Director) Paul, who is thrilled to be directing *Driving Miss Daisy* at the Winnepesaukee Playhouse, recently played the role of Jeremiah Young in the new musical *When I'm Gone*, which was produced by Mountain Movers Theatre at the Jettie Baker Center in Clintwood, VA. In the course of his career, he has directed over 60 productions, including *The Glass Menagerie*, *Steel Magnolias*, and *Good People* (The Barnstormers), *The 39 Steps*, *Deathtrap*, and *The Odd Couple* (Jean's Playhouse), *Wittenberg* (Advice to the Players), and *The Legend of Sleepy Hollow* (Mountain Movers Theatre). Paul, who recently retired from Plymouth State University after 27 years, served the school as Director of Theatre, Chair of Music, Theatre, and Dance, and Coordinator of the Standardized Patient Program. As a playwright, he's seen his work produced at theatres throughout the country and is the recipient of a National Endowment for the Arts Fellowship, Shubert Fellowship, and Time-Warner Fellowship as well as numerous commissions and awards. He holds an MFA in Dramatic Writing from Brandeis University and Ph.D. in Theatre History, Literature, Theory, and Criticism from Tufts University.

Natalya Salvati (Wardrobe Supervisor) is a senior attending the University of New Hampshire, double majoring in Design and Technology and Women's Studies. This is Natalya's first season with the Winnepesaukee Playhouse! Natalya's previous experience includes two summer seasons with Prescott Park Arts Festival (*Footloose* and *You're A Good Man Charlie Brown*) and Collegiate experience at UNH. The university experience includes stage managing for the UNH theatre department and theatre club: Mask and Dagger (*Roe*, *Anne of Green Gables*, *Hecuba*, *Tartuffe*, *She Kills Monsters*, *The Shaking Earth*), assistant stage managing at UNH (*Into the Woods*, *Hershel & the Hannukah Goblins*, and *We the People*), in depth costume based independent studies, costume design, wardrobe crew (*The Odyssey*), and carpentry. Natalya is very excited about the opportunity to wardrobe supervise and work with all of the different casts and creative teams!

E. Wilson (Audio/General Technician) is an audio technician based out of Atlanta. Elijah learned how to do theatre from the excellent Gainesville Theatre Alliance, a joint program between Brenau University and The University of North Georgia, and their mentor Stuart Beamen. In their off time, Elijah enjoys reading, listening to music and walking through nature.

Nick Winkler (Props Supervisor) is thrilled to be joining as the props supervisor at the Winnepesaukee Playhouse this season. Previous experience includes prop master for *Alice and Wonderland* and *The Enlightenment of Percival Von Schmutz* at Adirondack Theatre festival. Other prop coordinator credits include *Significant Other*, *She Loves Me*, *The Nutcracker Ballet*, and *Proof*.



James W. Hill
Owner

Mailing Address:

Post Office Box 101

Moultonborough, NH 03254-0101

Cell: 603-476-2521

Fax: 1-877-495-6388

Have Laptop. Will Travel...

email: jim@birchhill.net

Visit us online at www.birchhill.net

Permanent Staff

Thom Beaulieu (Managing Director/Sound Designer) is pleased to be a part of the staff at the Playhouse. An award-winning lighting and sound designer, Thom holds a BFA in Drama from Carnegie Mellon University's School of Drama, as well as an MS in Physics from Georgia State University. He enjoys golf, boating, and poker, and lives in New Hampton with his wife Meredith and daughter Molly.

RJ Bogues (Assistant Technical Director) is excited to be here for his first season as an ATD, as well as his third season at the Playhouse. He is a WCSU alumni originally from small town New Fairfield, CT. He has worked previously as a carpenter in UBU at WCSU, *Spamalot* at Musicals at Richter, and *Godspell* at ACT of CT, with some small technical director credits in *Shrek the Musical* at Musicals at Richter, and *The Nightman Cometh* at CCSU. Randal has also acted on occasion, appearing in shows such as *Glorious!* (Bellhop 1) in the Playhouse's 2021 season. He thanks you for coming, and hopes that you will enjoy what the Winnepesaukee Playhouse's 20th Season has to offer!

Amanda Dickinson (Production Manager) came to the Playhouse from a background in healthcare, having practiced medical Speech-Language Pathology for 18 years. She holds a Bachelor of Science in Speech and Hearing from Elmira College in New York, and a Master of Science in Speech-Language Pathology from The MGH Institute of Health Professions in Boston. After joining the Playhouse in 2017 as a community theatre actor, Amanda went on to work with the Professional Company and the WP Education Department, while also serving for five years on the Winni Players Community Theatre steering committee. Favorite Playhouse credits include *M*A*S*H* (Bridget), *Company* (Assistant Stage Manager), *Steel Magnolias* (Producer, Properties Coordinator), *The Complete Works of William Shakespeare (Abridged) [Revised]* (Wardrobe Supervisor/Running Crew), *The Wolves* (Stage Manager), *Oedipus Rex* (Stage Manager), and [title of show] (Stage Manager). Amanda joined the permanent Playhouse staff as Production Manager in 2023.

Donna Findlay (Bookkeeper) joined the Playhouse in 2015 after retiring from a 21 year career at a public utility in Manchester, NH and spending 5 years as a para-educator in the Inter-Lakes School District here in Meredith. She gives unending love and gratitude to Jim, Cortland, John, and grandson Jimmy.

Matthew Hutchens (Technical Director) started at the Winnepesaukee Playhouse originally as a carpenter for 2021 season. He has stuck with us since then as the assistant technical director for 2022 and is now the technical director for 2023. Matthew's goals, as the technical director, are to teach others while also creating beautiful sets for the stage. This will be his first full season as a TD.



**Construction Management
Construction Services**



"Progress on Purpose"
Since 1969

51 Church Street, Laconia, NH
www.bpsnh.com 603-524-3411

Permanent Staff

Cory Lawson (Director of Education and Community Engagement) is a professional actor, director, and theatre educator. He is currently working on his dissertation for his Ph.D. in Interdisciplinary Fine Arts at Texas Tech University, where his research is in theatre festivals and devised works. He has devised and performed in several shows with the Dutch theatre company Orkater, both in Amsterdam and New York City. Cory has also created work with The Living Theatre and helped to found Ready Set Go Theatre, which created the world's first Shakespeare Webisodes. As an actor and director, Cory's work has been seen professionally in New York as well as in regional theatres across the country. He has also appeared on screen in national commercials and various television episodes. Cory holds his MFA in acting from The New School for Drama and a BA in Theatre: Performance and Dramaturgy from Roanoke College. He has served as the Associate Director of Education and Outreach at the Alabama Shakespeare Festival, the Artistic Director of The Burktech Players (a neurodiverse theatre company in Lubbock, Texas), and the Director of The Wallace Weekend Players in Levelland, Texas. Most recently, Cory co-founded and served as the Artistic Director of The Outside In Festival, a new nonprofit Theatre Festival showcasing devised works through the fostering and presentation of both national and international artists. He's thrilled to join the leadership team at the Winnepesaukee Playhouse and is looking forward to meeting and working with everyone in the community.

Timothy L'Ecuyer (he/him/his) (Artistic Director) is thrilled and grateful to begin a new chapter at the Winnepesaukee Playhouse, having previously served as Director of Education from 2014 to 2022. His directing credits at the Playhouse include *The 39 Steps*, *Red, Grace and Glorie*, *A Midsummer Night's Dream*, *The Rocky Horror Show*, *Mary's Wedding*, *California Suite*, *The Complete Works of William Shakespeare (Abridged) [Revised]*, and fourteen productions with the Education Department. Mr. L'Ecuyer has BAs in theatre and English from Keene State College as well as an MA and MFA in theatre education and applied theatre from Emerson College. He is a former president of the New Hampshire Educational Theatre Guild, an Equity stage manager, and a Teaching Lecturer in the Music, Theatre and Dance Department at Plymouth State University, where he directed *Our Town*, *An Enemy of the People*, *The Curious Incident of the Dog in the Night-Time*, and *Urinetown*. He has worked with many New Hampshire and Boston area theatres including American Stage Festival, Barnstormers, theatre KAPOW, Peacock Players, StageCoach Productions, Greater Boston Stage Company, the Nora Theatre Company, and Underground Railway Theater. He would like to thank his parents, Peter and Linda L'Ecuyer for (among many other things) supporting the Playhouse in NH Gives this year. He'd also like to thank the following people for their support: Gail Barrett, Laurie Felgate, Daniel Patterson, Mike Richardson, Sharon and Terry Richardson, Renée Speltz, Thomas Staley, and Laura Stephan. timothylecuyer.com

Lesley Pankhurst (Patron and Company Services Director) is one of the founders of the Winnepesaukee Playhouse. Lesley is a graduate of Wellesley College with an MA in Arts Administration and Cultural Policy from Goldsmiths College, University of London. In addition to serving as the Marketing Director of the Playhouse for its first 13 years, she has also designed costumes for many of its productions and has twice been the recipient of the NH Theatre Award for Best Professional Costume Design for *Two Rooms* (2007) and *The Glass Menagerie* (2008). She is the proud mom to her daughter, Sophie, cat Sasha, and wife to the proudly retired Neil. Much love and appreciation to Lyn Osborne Winter.



Melcher & Prescott INSURANCE

KNOWLEDGE. TRUST. CONFIDENCE.



Since 1862 Melcher & Prescott Insurance has been a proud sponsor of the arts and culture in our community.

Our local professional staff are here to assist you with all your insurance needs including homeowners, automobile, watercraft, business and employee benefits.

We work closely with our clients to secure the proper coverage at the best price!

www.melcher-prescott.com | insure@melcher-prescott.com | 603-524-4535



Best Insurance Company

This is what retirement looks like.



An active community of friends is waiting for you at Taylor.

Taylor Community is located in the beautiful Lakes Region of New Hampshire with campus locations in both Laconia and Wolfeboro. Finding a home at Taylor means more than access to a stunning new cottage or apartment - it means receiving the keys to present and future peace of mind.

Whether you prefer an active lifestyle filled with fitness classes and an extensive lineup of social and recreational opportunities, or would rather enjoy a fine-dining experience with friends after a day spent by the lake...

Taylor is the place for you!




Discover Taylor Community
taylorcommunity.org

Laconia

435 Union Avenue
Laconia, NH 03246

Wolfeboro

83 Rolling Wood Drive
Wolfeboro, NH 03894

 (603) 366-1400 / taylorcommunity.org
A not-for-profit since 1907

98.3 Frank^{fm}™

THE SOUNDTRACK OF THE LAKES REGION!

**The community we service
is the community we support.**

We thank our local communities for trusting us to be there when they need us, and are proud to do our part in supporting them.



Reliable Deliveries | Responsive Service


www.deadriver.com



NEW
HAMPTON
SCHOOL

Where Aspiring Artists **TAKE CENTER STAGE**

Whether the arts are a passion or a hobby, there are ample opportunities for professional-level learning at New Hampton School. From the stage to the recording studio, at the ceramics wheel or in the animation lab, our students create in every corner of campus.

 www.newhampton.org





A FULL SERVICE LAW FIRM

Estate Planning and Probate
Business & Non-Profit
Real Estate
Employment & Labor
Municipal

Land Use & Development
Telecommunications
Litigation
Environmental
Utility

COUNSELING INDIVIDUALS, BUSINESSES,
ORGANIZATIONS AND MUNICIPALITIES
THROUGHOUT NEW HAMPSHIRE

DONAHUE, TUCKER & CIANDELLA, PLLC

**PROUDLY SUPPORTING THE ARTS
FOR OVER 30 YEARS**

OFFICES IN MEREDITH, CONCORD, PORTSMOUTH, & EXETER, NH

WWW.DTCLAWYERS.COM

1-800-566-0506

Thanks

*Thank you for recognizing that art matters.
It takes everyone working together to continue to create great theatre.*

Directors' Circle

\$25,000+

Anonymous
Anonymous
Paul and Sharon Steinwachs

\$10,000+

Anonymous
The Baker Family
Beth and Rich Compson
Richard and Carol Gerken
Jodie Herbert and Rusty McLearn
NH Charitable Foundation
New Hampshire State Council
on the Arts
The Shubert Foundation

\$5,000+

Laura and Gary Stephan

\$2,500+

Gloria and Irving Fox
Ellie Gordon
The Greater Lakes Region
Children's Auction
John & Muff
Ambassador Paul Speltz and
Renee Speltz
Anita E. Springer

\$1,000+

Anonymous
Ray and Karen Abramson
Marc and Carol Bard
Eden and Nate Bowditch
Mike and Lisa Brien
Jim and Leslie Chapman and
Meredith Whole Living Center
Judy Cookman
Ray Craigie and Pam Smarling
Chuck and Diane Fray
Liz and Bob Gabel
James Whittredge Hill
Paul and Beverly Jaques
David and Joanne Jeannette
Gerald Kadish
John and Margie Kreidler
Louise and Sandy McGinnes
Susan and Douglas McLane
Sharon and Tom Messmore
Debra Nash
Kate O'Brien
Neil and Lesley Pankhurst
Barbara Pitsch
John Robbins
Jim and Judi Rogato
Jason and Deanne Sargent
Carolyn S Scattergood
Graham and Julia Thomson
Barbara and Gordon Webb
Whitney Werner
Barbara Zeckhausen

to YOU!

Actors' Circle

\$500+

Michael Ames/Half Moon Enterprises, Inc
James Burke
Kelly Dunn
The Findlay Family
John and Carol Ford
Katie Guilmett
Susanna High
David and Patricia Immen
The Denny Knight Family
Fund of the Princeton Area Community Foundation
Barbara & Chris Maciejewski
Joan and David Martin
Maurice and Rhoda Miller Endowment Fund
New Hampshire Center for Nonprofits
Mark and Susan Primeau
Robert and Margie Sallies
Gil Schohan
Robert and Anne Shaw
Judy and Steve Siegel
David Stamps and Judith Buswell
Bruce and Betsy Thomas
Annie and Chris Weinmann
Mr. & Mrs. Brian Winslow

\$250+

Anonymous
Tom and Patricia Barrick
Linda and John Browne
Bob & Elaine Carangelo
Ken Chapman and Carol Lowden
James and Bonnie Doherty
Graham Edmondson
Jamie Gegerson

Robert and Eileen Gosselin
Don and Lou Ann Harris
Elizabeth Immen
Joseph Kelaghan
Charlotte Lee and Ron Turbayne
Brad and Lynn Leighton
Deborah Leonard Kosits
Kathleen Lyons
Meredith Rotary
Alan and Carol Metevia
Kaitlin O'Neil
Rosemary Pizzuti
Deborah Seid and Tom Green
Edward Sonn and Sharon Forde
The Truesdale Family
Deborah & Paul Walker
Mark and Kathleen Whitehead
Gregg Williams

\$100+

Anonymous
Anonymous
Anonymous
Anonymous
Anonymous
Anonymous
Anonymous
Miriam Adams
Amazon Smile Foundation
Christine and Carlos Anderson
Cecile Andrews
Delaney Andrews and Dawson Ellis
Rick and Rae Andrews
Gail Barrett

Chuck and Sue Bates
David Berard
George Berman
Martin Berman
Craig Betchart
Tony and Terri Bouchard
Steve and Judy Brown
Jay Buckley
Sarah Bunkley and Richard Smith
Alison and Christopher Casko
Jean and Don Clarke
Robert Connors
Abraham and Lynn T. Dadian
Cara David
Constance Dehnel
Alexa Dembiec
Diane G. Dion
Martha Dolben
Ann Donahue
Tami and Mark Donohoe
Carol and Robert Doretti
Denise Doyle
Kim Duncan
Georgene Fabian
Laura Felgate
Andrew Fleischmann
Lisa Furlong
Leo Glasheen
Lynn Goddard
Jean Halfmann
J William Harris
Julie Hart
Mark Johnson
Susan Karsten
Ira and Lynn Keltz
Bernice and Bernie Kramer
Nancy Kubecka
Maureen Kuharic
Peter and Linda L'Ecuyer
Nancy and Newbold LeRoy

Actors' Circle (continued)

Marc and Carroll Levey	William Batchelder	Sara Tirrell
Lisa Lovett	Richard and Rosalie	Margaret Turner
John and Carol Low	Beaulieu	Deborah Vargo
Peter and Maryann Magoun	Andy Bedford	Rafael Vazquez
Bob Maloney and Bonnie Hunt	Karen and Paul Bemis	Lindsay Weiner
Jonathan Marro	Barbara and Charles	Wellesley College Theatre
William and Stefanie Marsh	Birdsey	Tim and Anne Whiting
Dr. Warren & Annette Mason	Suzanne Caroselli	Marjory Wilkinson
Greg & Regis Miller	Judith Clayman	John and Karen Yeigh
Peg and John Mongiello	The Cottages of Wolfeboro	
Paul Mrocзка	Emily Dahl	<i>All Other Gifts</i>
Dr Noe	Hannah Davidson	Anonymous
Margaret and Stephen Ober	David and Sylvia Detscher	Elizabeth Ahl
Deborah Osborne	Thomas Dixon and	Dalia Aleman
David and Fredda Osman	Annmarie Karayianes	Carolyn Ames
Charlotte Otto	Bob Foster and Mike Gillis	Catherine Asmar
A Parnes	Elizabeth Geiler	Eileen Bates-Bordies
Daniel Patterson	Casey and Drew Gerken	Arnold Benson
Mark Pettie and	Bryan Graf	Roger and Deborah Blake
Sue Molitor	Rebecca Gregoire	Roberta Brayer
Clayton Phillips	Betty Heaney	Kim Bruneau
John and Dorothy Piquado	Andrew Hendrick	Elizabeth Bulasko
Walter and Christine Powers	Nancy Henn	Matt, Carey and Emma Cahoon
Gail Putnam	Andrea Houghton	Kevin and Mary Ellen Canty
Mike Richardson	Christopher Kiley	Janice Cardarelli
Sharon Richardson	Constance Kuekan	Nancy Carsen
The Rickenbachs	Eliza J Leadbeater	Bill Charles
Mary and Dave Rogers	Jonathan and Glenna Lee	Rachel Chiffer
Joe Sampson	Marilyn Lezberg	Tyler Christie
Robert Sawyer	Charlene Malek	Paul Ciborowski
Melissa Shakun	Jessie Marden	Gay Daigle
Chris Slater	Joel Mercier	Alexander Davis
John Soha	Monica Michalsky & Tom Stankosky	Beth Day
Larry Spencer	Gerard and Joanne Morin	Judith Dean
Thomas Staley	Sean and Helen Murphy	Jack Degange
Judith Stern	Savannah Muzzey	Gary and Lisa DiMartino
Samantha Tella	Antoinette Olden	Maryann Dodge
Joyce Tyler	Jeffery & Jayne Peck	Clark Dumont
Barbara Ulm	Andrew Pinard	Jean Etter
John and Karen Warren	Tracy and Mark Renaud	Darlene Fritz
Hazel Zimmer	Rebecca Rigden	Christina Fuller
	Dennis and Kerry Schneider	Frank Garcia
\$50+	Steven B. Schwartz and	Virginia Gassman
Anonymous	Paula A. Leonard-Schwartz	Sandra Greenberg
Donna Acox	Robert Sears	Jennifer A Grunbeck
Marcy Alkalay	Jack and Doreen Sheppard	Eric Halvorson
Kay Anderson	Sally Sibulkin	Madeline Hanafin
		Hannaford Community

Bag Program
 Alison Hildebrand
 Joia Hughes
 Anne Ingard
 Amanda Jennison-Sousa
 JM
 Eliot Johnson
 Chris Jones
 Karen Kharitonov
 Valerie and Karl Kimball
 Daniel Klingenstein
 Cory Lawson
 Nathalie Leclair
 Michelle Levinson
 Denise Livingstone
 Thad Long
 Cassandra Mason
 Deirdre A Meehan
 Michelle Minot
 Suzanne Morrissey
 Junette Pearson
 Penny and Paul
 Michael Portrie
 Alan Provance
 Elizabeth Ricci
 Ulysses Roebuck
 Veronica Rosa
 David and Christine Roy
 Stuart W Russell Jr
 Angela Santamaria
 Janine M. Schifino
 John and Linda Shelley

Jennifer Simon
 Lori Smock-Joyal
 Evan Sohm
 Susan Swain
 Kathleen Sweeney
 Jennifer Szendre
 Allison Szklarz
 Judy Taylor
 Clayton Titus
 Christa Tsechrintis
 Cynthia Unangst
 Marie Valliere
 Valerie Verge
 Patricia Weston
 Amanda Whitworth
 Shelley Wieler
 Lowell Williams
 Pamela Williams
 Lorna Zammett

*Donation list dated
 7/23/22 - 7/22/23*

**Thank you to the following
 donors who have sponsored
 new chairs for the
 amphitheatre!**

Barbara and Charles Birdsey
 Eden and Nate Bowditch
 Mike and Lisa Brien
 Steve and Judy Brown
 The Cottages of Wolfboro
 Alexa Dembiec
 James and Bonnie Doherty
 Ann Donahue
 Kelly Dunn
 Dawson Ellis and
 Delaney Andrews
 Chuck and Diane Fray
 Liz and Bob Gabel
 Richard and Carol Gerken
 Rebecca Gregoire
 James Whittredge Hill
 Charlene Malek
 Jessie Marden
 Sean and Helen Murphy
 Savannah Muzzey
 Kaitlin O'Neil
 Charlotte Otto
 Neil and Lesley Pankhurst
 Carolyn S Scattergood
 Chris Slater
 Ambassador Paul Speltz and
 Renee Speltz
 Monica Michalsky & Tom Stankosky
 Lydia and Nathan Torr
 John & Muff Walker
 Barbara and Gordon Webb
 Mr. & Mrs. Brian Winslow
 John and Karen Yeigh
 Barbara Zeckhausen
 Wellesley College Theatre

Morgenstern Sustainers

Anonymous
 Anonymous
 John and Linda Browne
 J.W. Hill, Consultant
 Sarah Bunkley and
 Richard Smith

Alison and Christopher Casco
 Katie Guilmett
 Ira and Lynn Keltz
 Susan and Douglas McLane
 Kaitlin O'Neil
 Joe Sampson

Jason and Deanne Sargent
 Mary and Dave Rogers
 Graham and Julia Thomson
 John and Muff Walker
 Barbara and Gordon Webb
 Brian Winslow

These are people who participate in the
 continued success of the Playhouse through their recurring
 gifts, and we are so grateful for the ongoing support.

We appreciate your support!

Did you know that in typical years ticket sales only account for about 50% of what it takes to run the Winnepesaukee Playhouse?

Sadly, these have not been typical years recently. But patrons just like you have been so supportive and generous. No gift to the Playhouse is too small, and every donation helps us keep artists employed and audiences entertained throughout the year. If you would like to become a donor, or make an additional donation, your tax-deductible gift will be instrumental in helping to ensure the Playhouse can continue to provide the level of programming you have come to expect.

You can make a donation today by visiting the box office, calling us at (603) 279-0333, or visiting our website: www.winnepesaukeeplayhouse.org

Is it time to take your involvement to the next level?

- You could make a one-time gift of \$100
- Join the Morgenstern Sustainers with a monthly gift of \$10
- Join our Directors' Circle at \$1,000 a year (\$85/month)

You can be the one to inspire, engage, and entertain the community by making a tax-deductible gift. You can mail us a check, use your credit card online or over the phone, or stop by the box office today.

There are even more creative ways to support the Winnepesaukee Playhouse!

Have you ever considered including the Winnepesaukee Playhouse in your will? A gift through your will or estate plan enables you to support our mission and make a difference in the future of the Winnepesaukee Playhouse. Did you know you can use your IRA required minimum distribution to make a tax-free donation to a non-profit like the Winnepesaukee Playhouse? Questions? Speak with your financial advisor, or contact Thom Beaulieu at 603-279-0333 or thom@winniplayhouse.org.



Logos
Branding
Graphic Design & More

LogoFurther.com

ted@logofurther.com

603.562.6909



JOE WALKER
Marketing Services

"Vision without action is a daydream.
Action without vision is a nightmare."

-Japanese Proverb

Does your business have vision?

- Strategic business plan development
- Promotional / advertising plans
- Marketing plans
- Non-profit fundraising plans
- Presentations / guest speaking

JoeWalkerMarketing.com
info@joewalkermarketing.com
603-731-0693

Franchisee
Call 603-369-4376
to advertise.



CHRISTOPHER P. WILLIAMS ARCHITECTS, PLLC

PO Box 703 • Meredith, NH 03253 • 603-279-6513
www.cpwarchitects.com



Our award winning firm has provided innovative and environmentally sensitive design solutions since 1984. We specialize in sustainable building practices and offer expertise in incorporating green systems into client projects to enhance and protect the ecosystem, and conserve natural resources. We strive to design buildings that fit into their cultural context and environment.



MIRACLE FARMS

LANDSCAPE CONTRACTORS



Moultonborough, New Hampshire (888)288-8252

Extraordinary landscapes begin here!

- Landscaping
- Maintenance
- Hardscapes
- Mulch/Loam/Compost
- Firewood Dry/Green

603-253-9292

www.miraclefarmslandscaping.com



The Winnepesaukee Playhouse is grateful to the following foundations for their support.



STEINWACHS FAMILY
FOUNDATION



New Hampshire
State Council on the Arts



NEW HAMPSHIRE
CHARITABLE FOUNDATION

The Winnepesaukee Playhouse is supported in part by a grant from the New Hampshire State Council on the Arts & the National Endowment for the Arts.

Our Real Estate Goals are simple....

They're Yours!



Scott Knowles

603.455.7751

scottknowles@metrocast.net

Chris Adams

603.393.7993

adamschris195@gmail.com

Chris Kelly

603.677.2182

chriskelly@baysidenh.net



We have everything you need in real estate

208 Daniel Webster Highway, Meredith, NH 03253

(603) 279-0079

604 Main Street, Laconia, NH 03246

(603) 527-8200

www.baysideplatinumgroup.com





the
WINNIPESAUKEE
playhouse

20th Season Gala

The Winnepesaukee Playhouse
20th Season Gala
Saturday, September 30th, 2023
5:30pm

Join us for dinner and a
performance celebrating
20 years of theatre that
inspires and entertains!

Tickets available at www.winnepesaukeeplayhouse.org

Very Music Very Italian & Very Good!



**Celebrating
34 Years!**

Giuseppe's

*Live
Music*

Pizzeria & Ristorante

**This unique and popular restaurant is
one of the Lakes Region's most loved since 1989!**

Serving Award-Winning Gourmet Pizza, Pasta, Seafood,
Steak, Chicken, Veal, Vegetarian, Vegan, Gluten-Free,
Soup, Salads, Desserts, Cappuccino,
Beer, and a fabulous selection of Wine and Spirits!

Lunch and Dinner Daily

Reservations are highly recommended and greatly appreciated!

Located on the corner of Routes 3 & 25
Mill Falls Marketplace, Meredith, NH

**Call (603) 279-3313
For Reservations & Take Out
Visit giuseppesnh.com**



**LAKES REGION
COMPUTER**

**Celebrating 25 Years in Business!
A ONE STOP TECH SHOP**

Apple • PC • Verizon • Repairs
IT Business Services

Visit Our Retail Store!

- Verizon Authorized Retailer
- Apple Premium Service Provider
- Selling Apple, PC, Phones & Accessories
- Phone and Computer Repairs

IT Business Services Include:

- Computer Systems and Network Installations
- Systems Monitoring and Management
- Backup and Disaster Recovery
- Security and Compliance
- Cloud Solutions
- IT Inventory and Planning
- On-Site and Remote Support
- Wireless Network Planning and Installations
- Security Camera Installations
- Nextiva Business Phone Systems

12 Main Street, Center Harbor, NH 03226

Phone: 603.253.9847 • Website: lakesregioncomputer.com

Follow us!  [lakesregioncomputer](https://www.instagram.com/lakesregioncomputer)  [lakesregioncomputer](https://www.facebook.com/lakesregioncomputer)